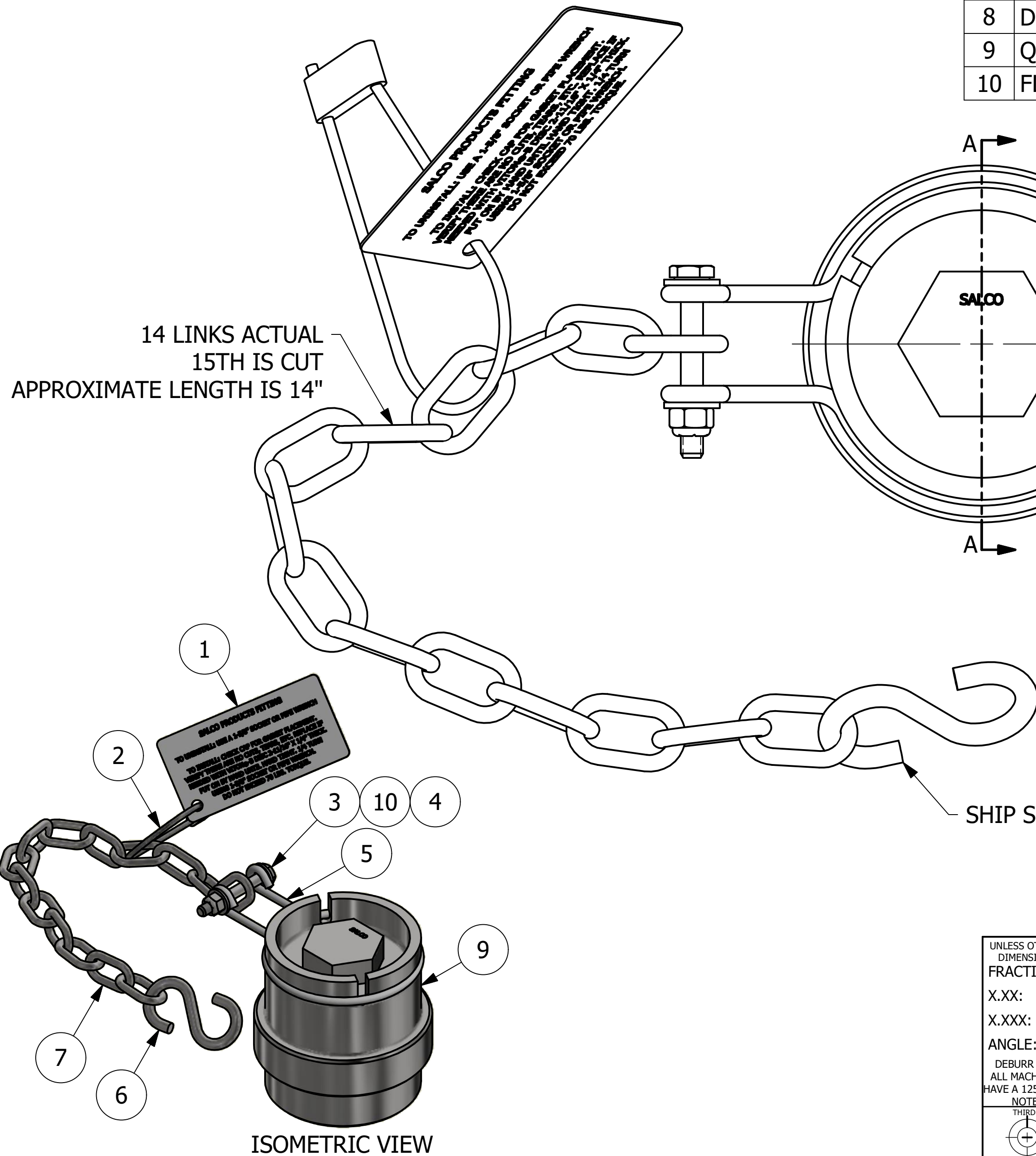
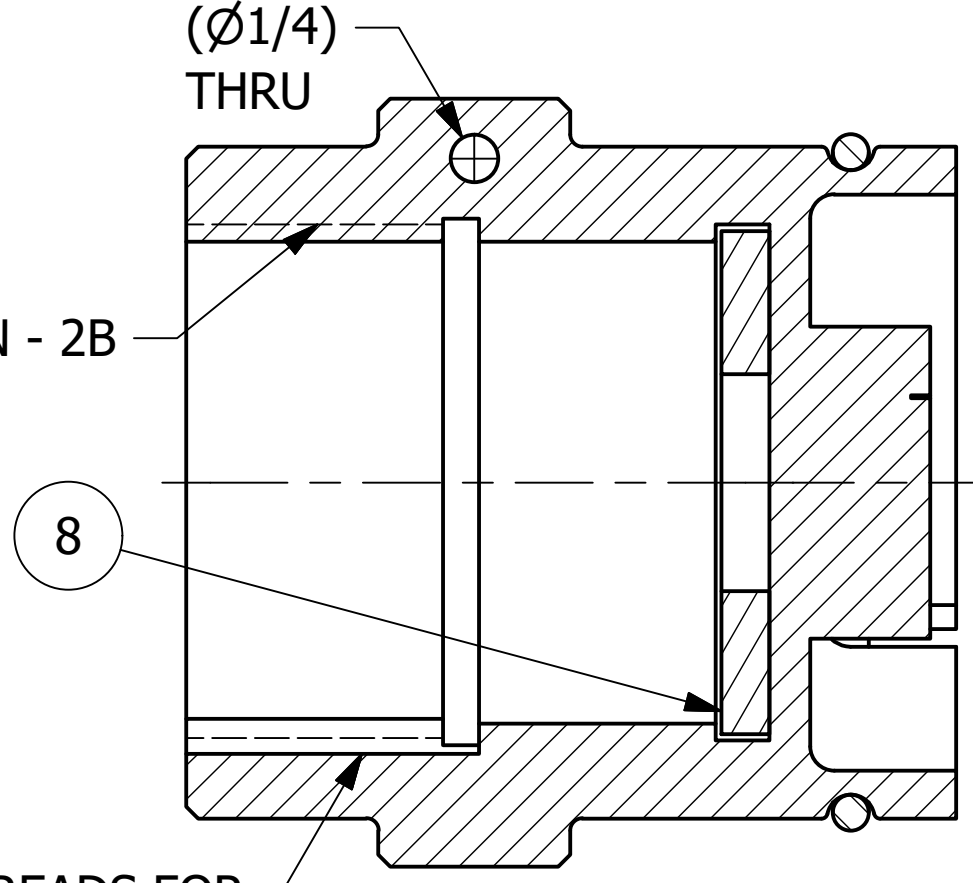
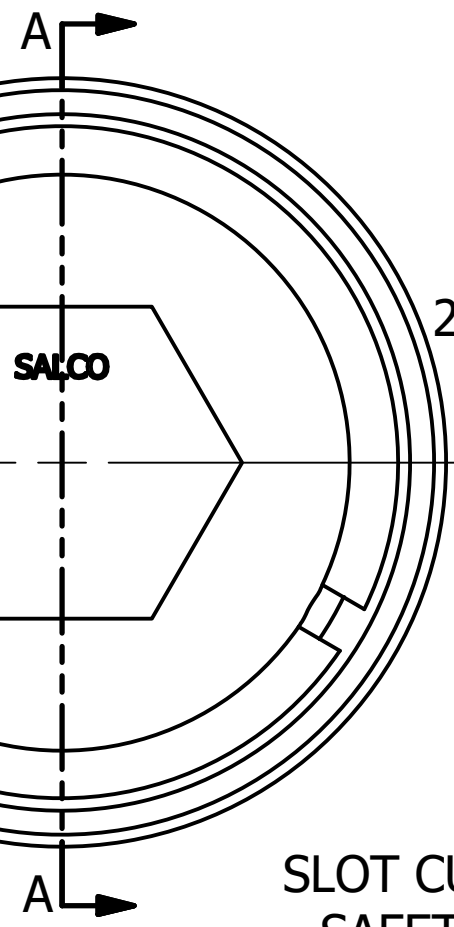


NO.	PART NAME	PART #	REQ'D	MATERIAL
1	TAG	A35303	1	304 SS
2	CABLE SEAL	BRSCEZ181277HS	1	CS
3	HEX BOLT 1/4"-20X2"	HCB20S	1	18-8 SS
4	HEX LOCK NUT 1/4"-20	HCN20S	1	18-8 SS
5	3" LOCKING RING	LR35S4_1	1	304 SS
6	S-HOOK 1/4"X2 1/2"	SC25SHS	1	18-8 SS
7	CHAIN LINK 3/16"	SC28SS	15	18-8 SS
8	DUST CAP GASKET 2"	TE2DCG07	1	VITON B
9	QUICK CONNECT CAP 2" THREADED	TE2S416DCLP	1	416 SS
10	FLAT WASHER 1/4" SAE	VAISW30	2	18-8 SS



14 LINKS ACTUAL  
15TH IS CUT  
APPROXIMATE LENGTH IS 14"



SLOT CUT IN THREADS FOR SAFETY PRESSURE RELIEF

SECTION A-A

NOTE:  
TAG A35303 TO BE ATTACHED TO CHAIN USING BRSCEZ181277HS.

SHIP S-HOOK LOOSE

REV	BY	DATE	DESCRIPTION
F	CHL	12/1/20	REPLACE TE2DDCG7 W/TE2DCG07, ADDED NOTE, UPDATED TITLEBLOCK
E	RJP	9/13/16	UPDATED TE2S416DCLP GEOMETRY
D	JG	8/13/14	REPLACED BR8959012-F W/ BRSCEZ181277HS
C	KHK	2/13/13	ADDED A35303 & BR8959012, VIEWS, NOTE
B	GS	7/9/12	REPLACED C21159 & TE2S416DCL WITH TE2S416DCLP.
A	GS	7/2/12	DRAWING ADDED TO NETWORK.

UNLESS OTHERWISE SPECIFIED DIMENSIONAL TOLERANCES FRACTIONAL: ±1/16 X.XX: ±.03 X.XXX: ±.015 ANGLE: ±1° DEBURR ALL SHARP EDGES. ALL MACHINED SURFACES TO HAVE A 125 RMS FINISH UNLESS NOTED OTHERWISE	DRAWN BY: GS CHECKED BY: CHL PROTOTYPE DATE: 5/7/2012 APPROVED FOR PRODUCTION BY: VD PRODUCTION DATE: 2/13/2013 SIZE: C DRAWING #: 33640
---	--

**SALCO PRODUCTS, INC.**

PART NAME: **QUICK CONNECT CAP 2" THREAD ON**

MATERIAL: **SEE BOM**

PROJECT #: **120102** SHEET #: **1 OF 1** SCALE: **1 : 1**

PART #: **TE20S416DLPDC07A**