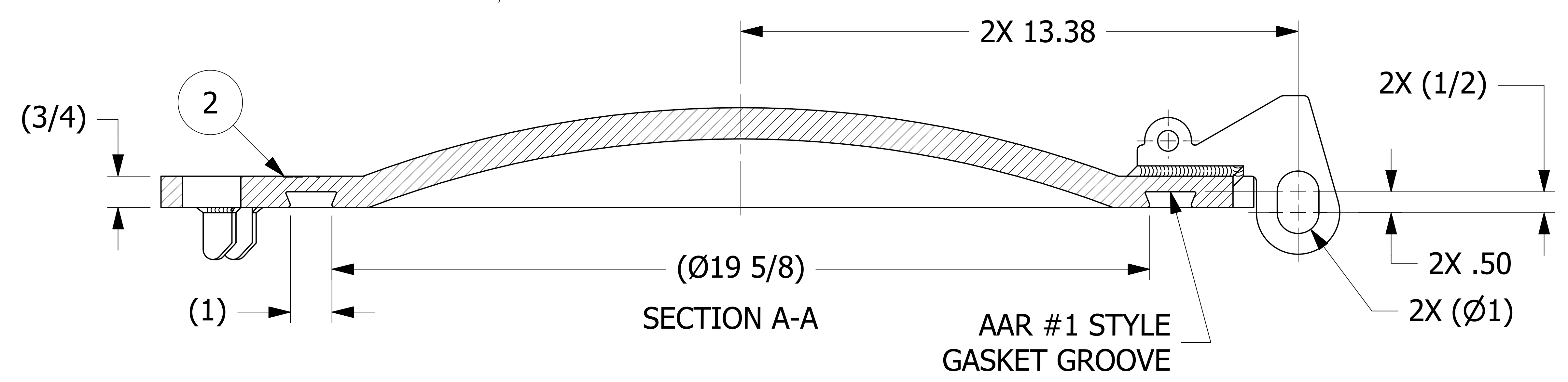
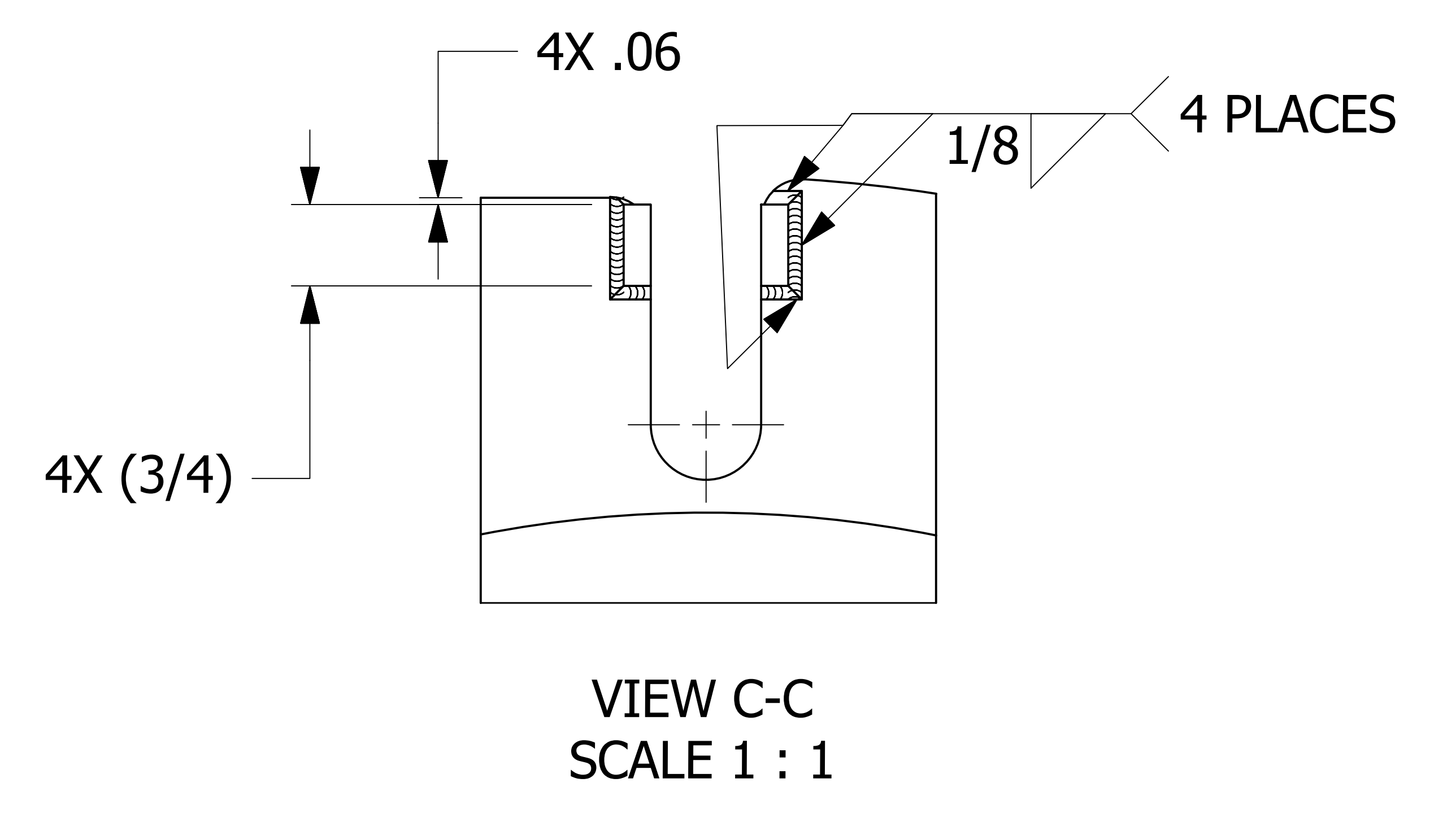
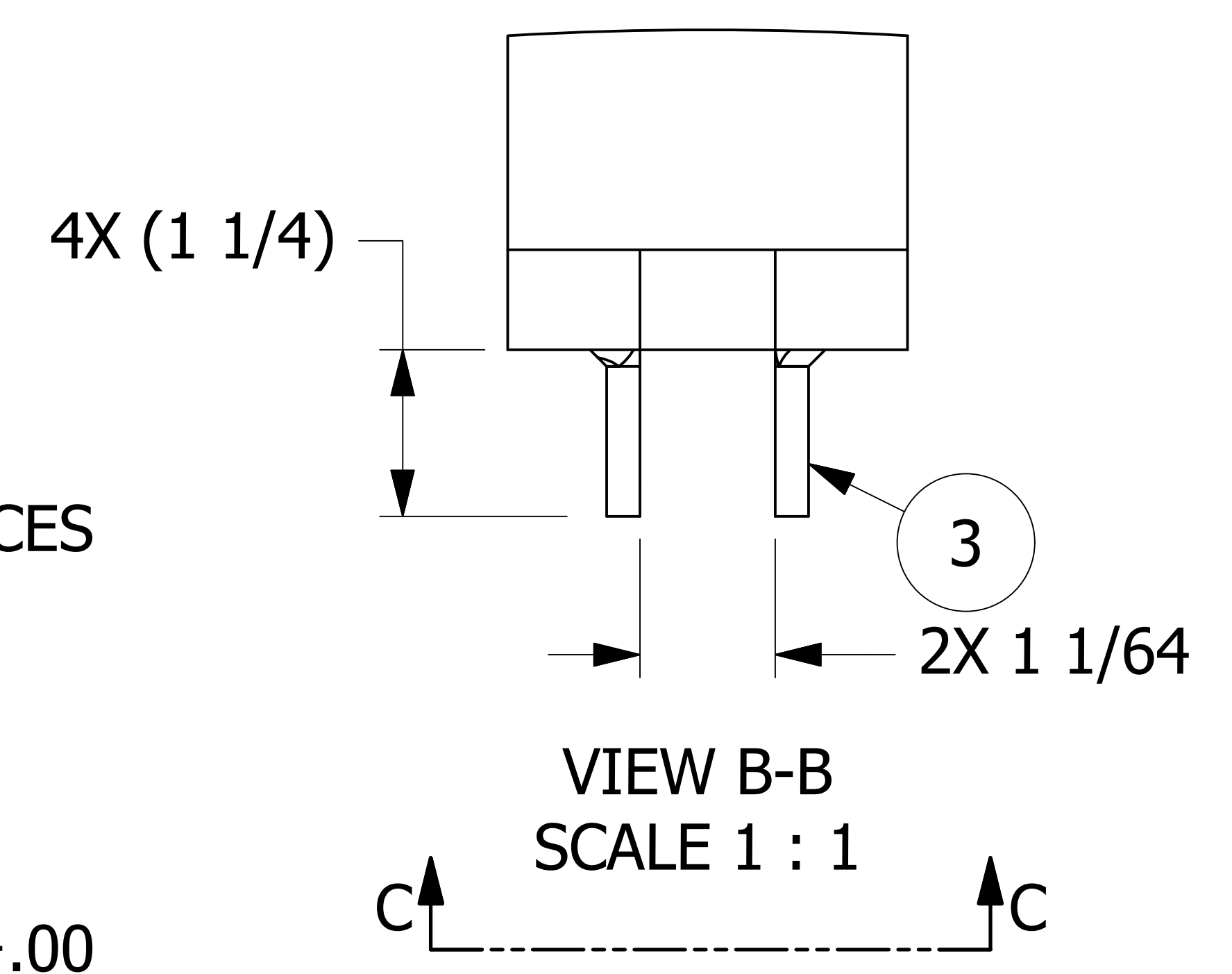
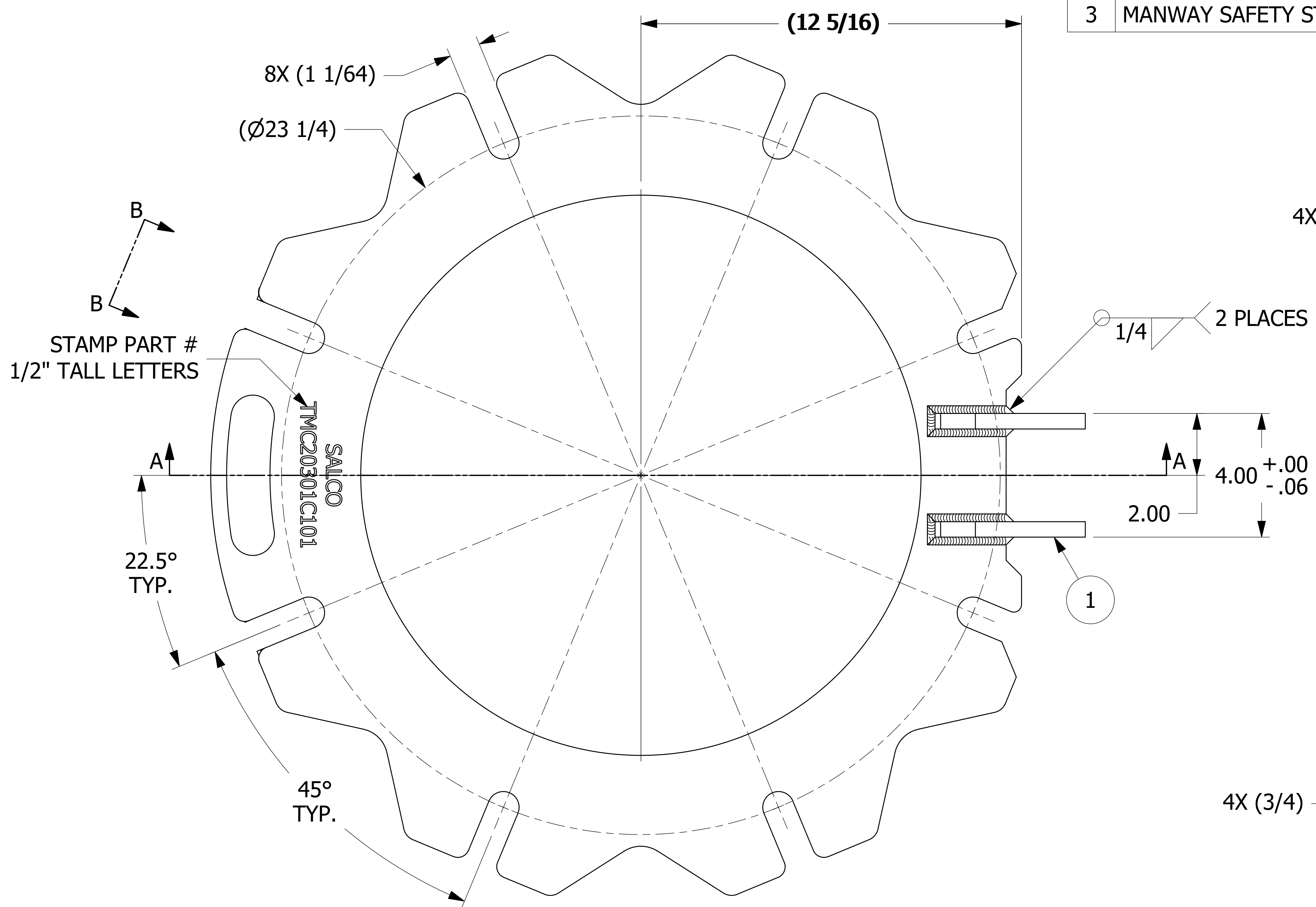


NO	PART NAME	PART#	REQ'D	MATERIAL
1	MANWAY HINGE	C45476	2	ASTM A36
2	MANWAY COVER 20" 8-BOLT	TMCDR20301C1	1	ASTM A572 GRADE 50
3	MANWAY SAFETY STOP	TMCSBSC1	4	ASTM A36



REV	BY	DATE	DESCRIPTION
E	WEB	5-16-19	REMOVED QAP4A-1 NOTE; Q-2.15.7 WAS QAP4C-1; D-008 WAS DSS 12; ADDED D-005 NOTE; AAR # WAS E-089005
D	RJP	1-3-18	LOT CONTROL NOTE WAS QAP5A-1
C	RJP	10-4-17	HINGE WELD WAS 3/8"; ADDED NOTE 6; $4.00 +.00/-0.06$ WAS 4.00
B	JG	6-20-17	ADDED CHAMFERS TO TMCDR20301C1; SALCO TO BE STAMPED ABOVE PART #
A	RJP	5-23-17	RELEASED FOR PRODUCTION

- NOTES:
- AAR APPROVAL # E-182113.
 - TEST PER Q-2.15.7.
 - SEE DOCUMENT D-008 FOR WELDING PROCEDURES.
 - WELD ACCEPTANCE CRITERIA TO MEET DOCUMENT D-005.
 - PART TO BE LOT CONTROLLED.
 - PART MUST BE FREE OF WELD SPATTER.

UNLESS OTHERWISE SPECIFIED DIMENSIONAL TOLERANCES FRACTIONAL: $\pm 1/16$ X.XX: ± 0.03 X.XXX: ± 0.015 ANGULAR: $\pm 1^\circ$ DEBURR ALL SHARP EDGES. ALL MACHINED SURFACES TO HAVE A 125 RMS FINISH UNLESS NOTED OTHERWISE.	DRAWN BY: RJP	CHECKED BY: VD	PROTOTYPE BY: RJP	PROTOTYPE DATE: 5/9/2017	APPROVED FOR PRODUCTION BY: EJF	PRODUCTION DATE: 5/23/2017
---	---------------	----------------	-------------------	--------------------------	---------------------------------	----------------------------

SALCO PRODUCTS, INC.

PART NAME: **MANWAY COVER 20" 8-BOLT**

MATERIAL: **SEE BOM**

PROJECT #: **R170504** SHEET #: **1 OF 1** SCALE: **2:3**

DRAWING #: **E45477** PART #: **TMC20301C101**