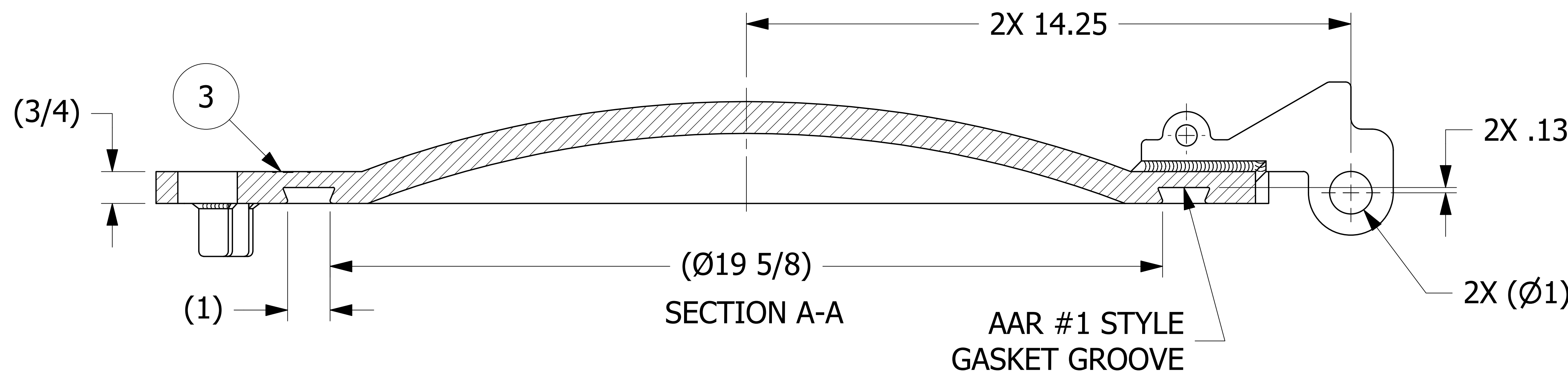
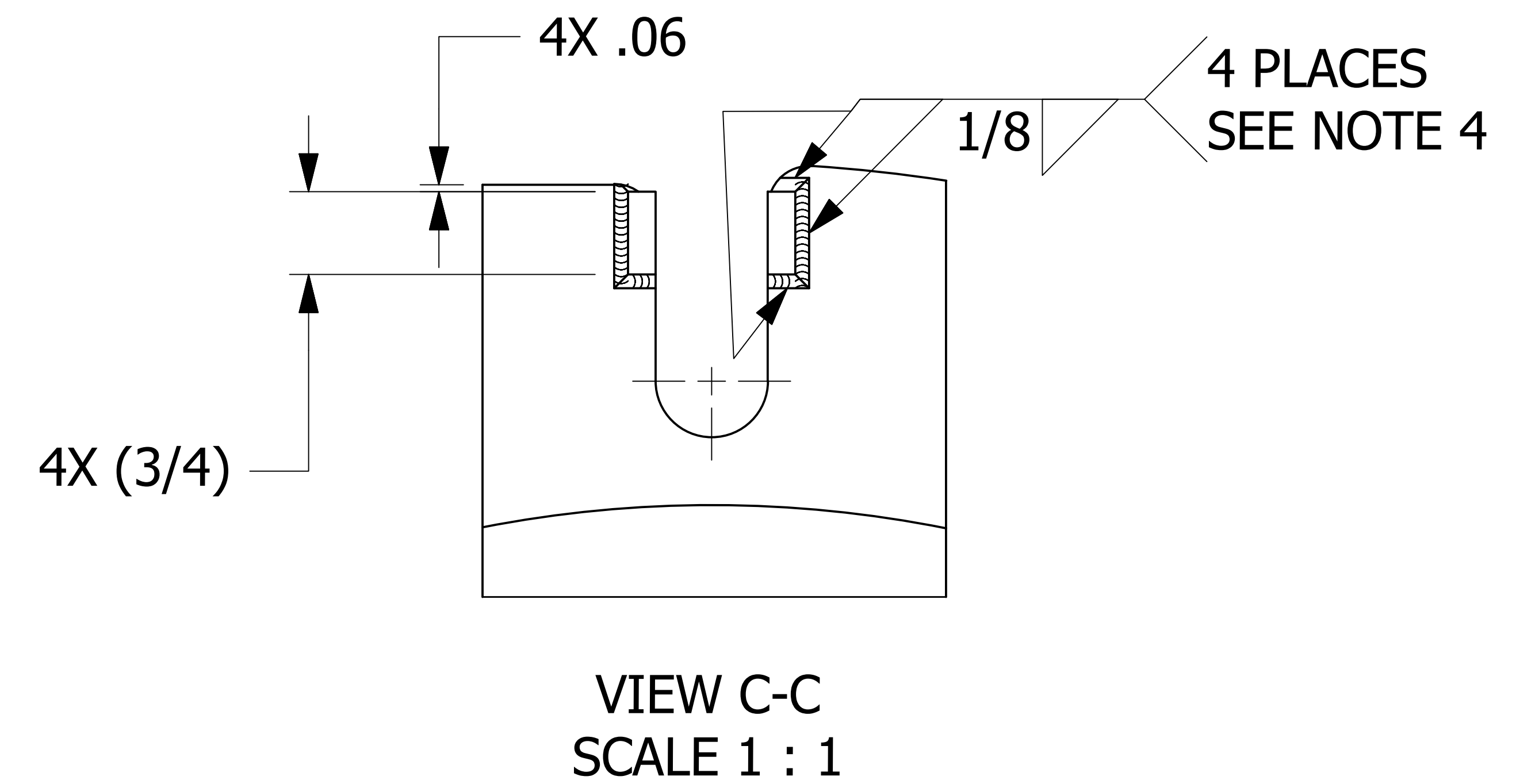
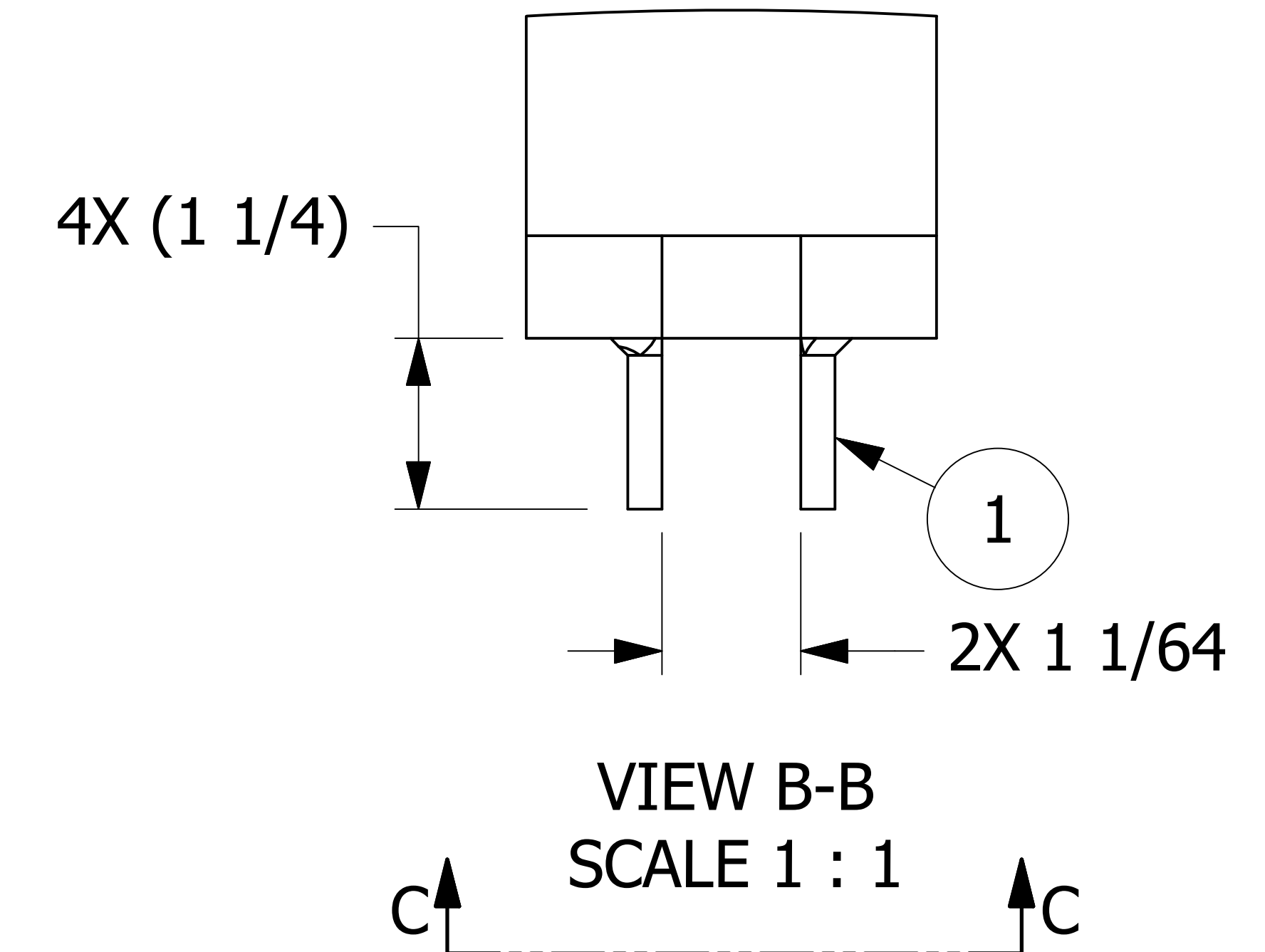
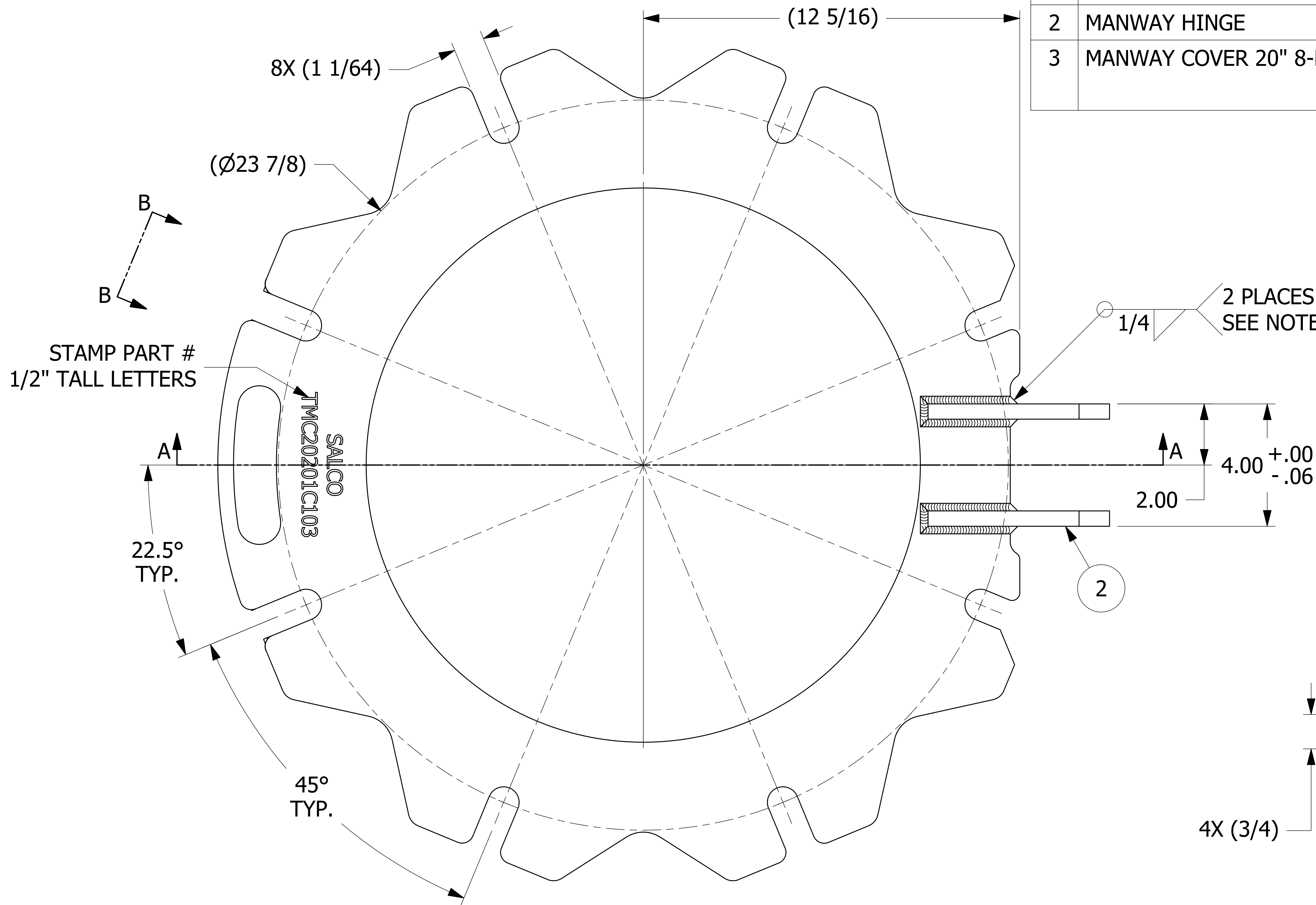


NO.	PART NAME	PART#	REQ'D	MATERIAL
1	MANWAY SAFETY STOP	A44197	4	ASTM A36
2	MANWAY HINGE	B40713	2	ASTM A36
3	MANWAY COVER 20" 8-BOLT	TMCDR20201C1	1	ASTM A572 GRADE 50 TYPE 2



- NOTES:
1. AAR APPROVAL # E-182113.
 2. TEST PER Q-2.15.7.
 3. SEE DOCUMENT D-008 FOR WELDING PROCEDURES.
 4. WELD ACCEPTANCE CRITERIA TO MEET DOCUMENT D-005.
 5. PART TO BE LOT CONTROLLED.
 6. PART MUST BE FREE OF WELD SPATTER.

REV	BY	DATE	DESCRIPTION
L	CHL	4-16-19	UPDATED MATERIAL FOR TMCDR20201C1
K	CHL	1-28-19	REMOVED Q-2.15.6 NOTE, REPLACED WELD NOTE W/D-008, AAR # WAS E-089004
J	JG	10-9-18	UPDATED WELD NOTE; NOTES 4 & 5 WERE DSS 12
I	CHL	7-3-18	Q-2.15.6 WAS QAP4A-1; Q-2.15.7 WAS QAP4C-1
H	RJP	12-20-17	LOT CONTROL NOTE WAS QAP5A-1
G	JG	10-4-17	HINGE WELD WAS 3/8"; ADDED NOTE 6
F	JG	9-12-17	ADDED TOL OF +.00/-0.06 TO THE 4.00 DIMENSION
E	JG	7-7-17	UPDATED TMCDR20201C1 GEOMETRY; ADDED "SALCO" TO COVER STAMP
D	JG	5-12-17	UPDATED WELD NOTE TO DSS 1S, VIEWS, DIMS
C	WEB	8-29-16	REMOVED GASKET GROOVE DIMS, REPLACED 4X A40848 W/ 4X 44197
B	JG	12-30-15	STAMP NOTE WAS "SALCO PRODUCTS, P/N"
A	JG	3-9-15	RELEASED FOR PRODUCTION

UNLESS OTHERWISE SPECIFIED DIMENSIONAL TOLERANCES FRACTIONAL: ±1/16 X.XX: ±.03 X.XXX: ±.015 ANGULAR: ±1° DEBURR ALL SHARP EDGES. ALL MACHINED SURFACES TO HAVE A 125 RMS FINISH UNLESS NOTED OTHERWISE.	DRAWN BY: GDS
THIRD ANGLE PROJECTION	CHECKED BY: CHL
	PROTOTYPE BY: GDS
	PROTOTYPE DATE: 4/22/2014
	APPROVED FOR PRODUCTION BY: CHL
	PRODUCTION DATE: 3/9/2015

SALCO PRODUCTS, INC.			
PART NAME: MANWAY 20" 8-BOLT			
MATERIAL: SEE BOM			
PROJECT #:	140127T	SHEET #:	1 OF 1
DRAWING #:	E38850	PART #:	TMC20201C103
		SCALE:	2:3