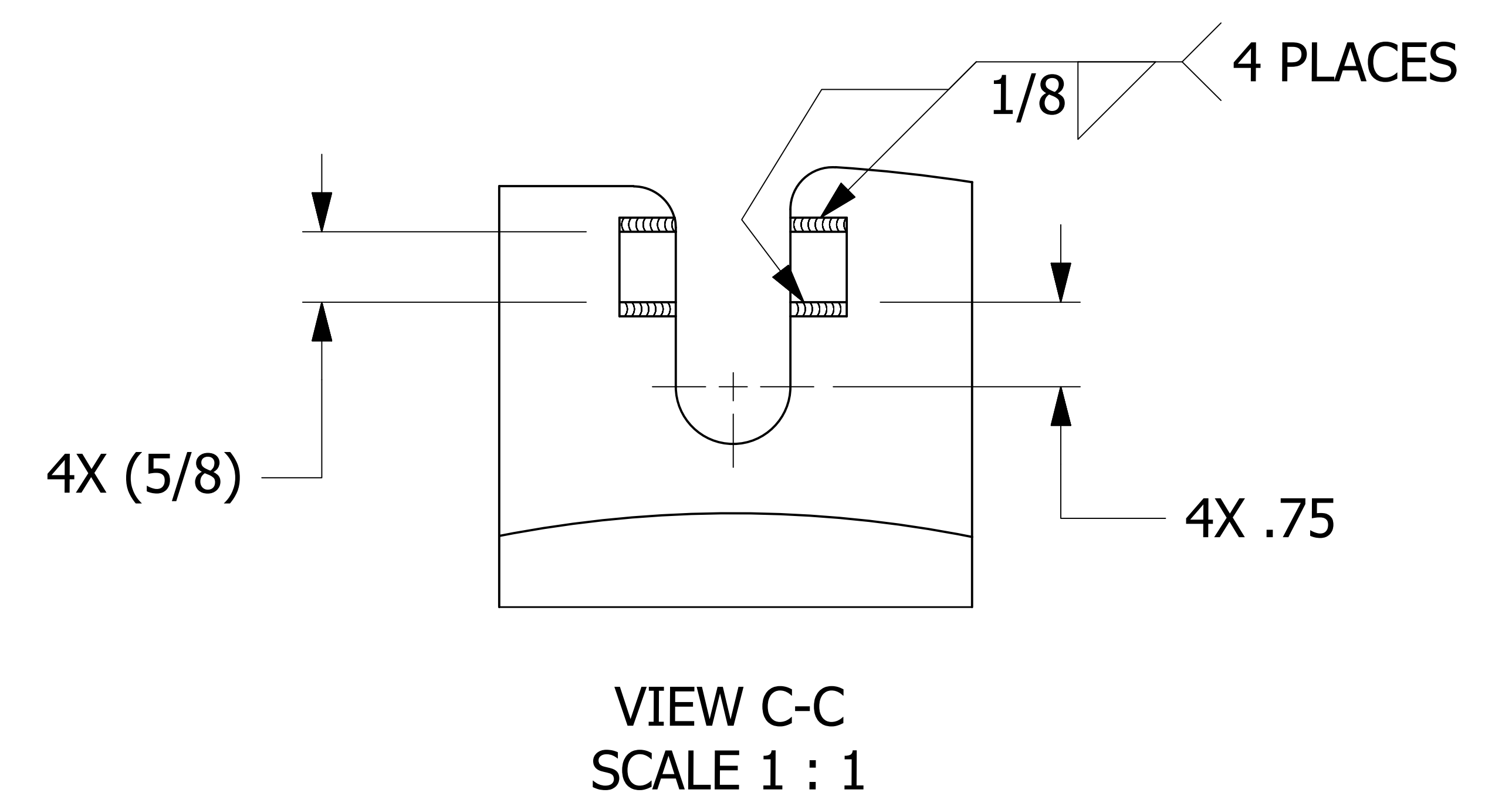
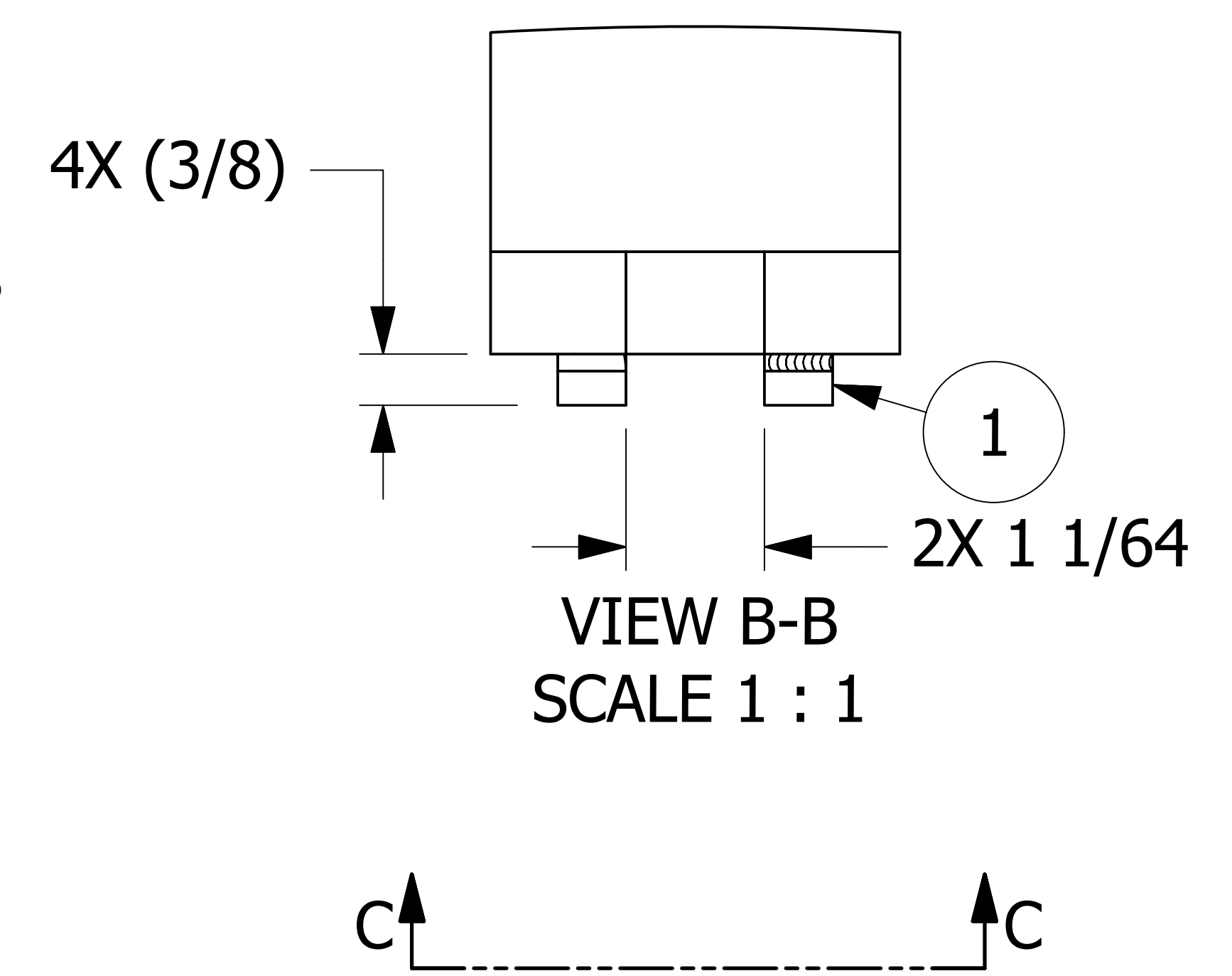
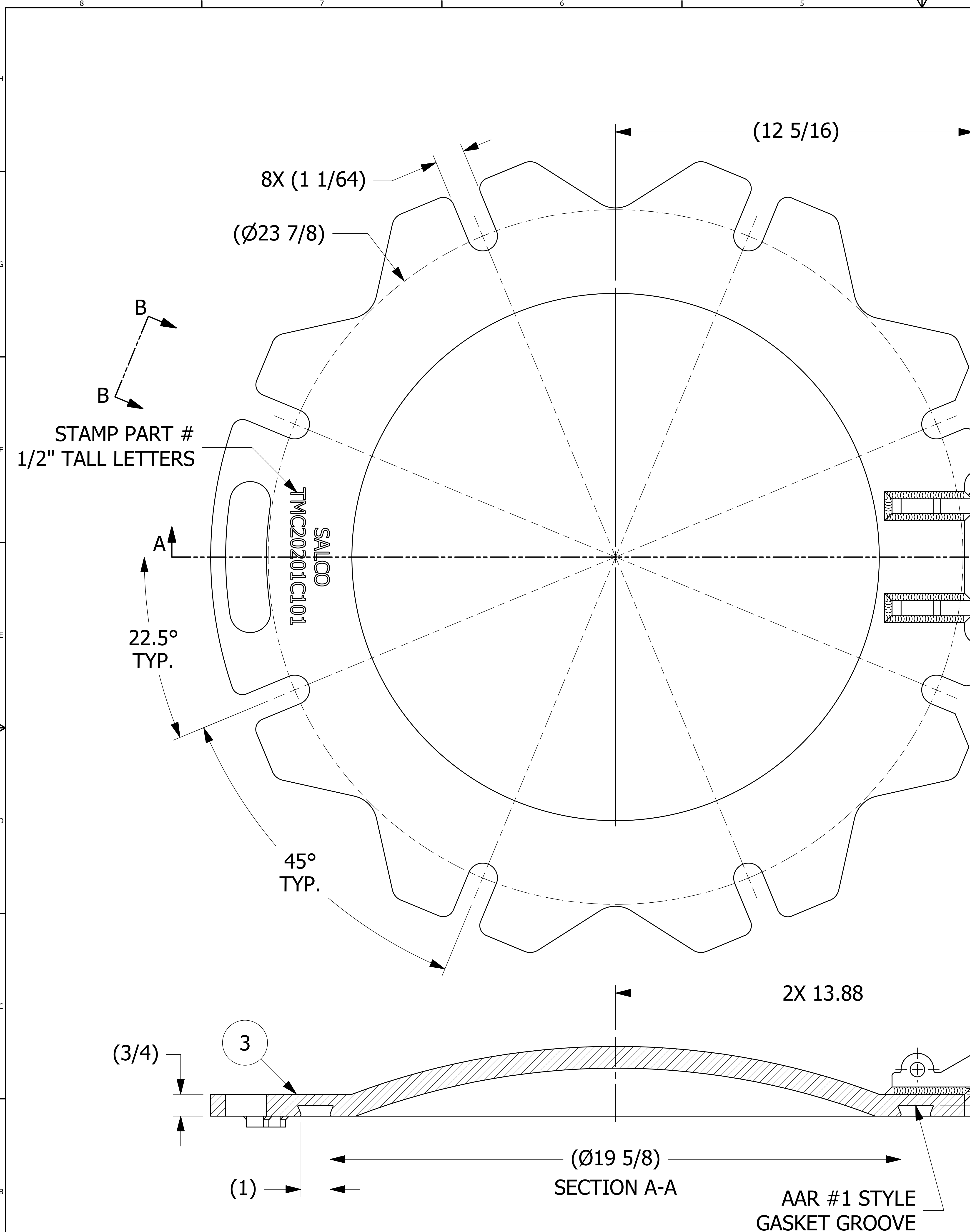


NO	PART NAME	PART#	REQ'D	MATERIAL
1	MANWAY SAFETY STOP	A28439	4	ASTM A36
2	MANWAY HINGE	C42810	2	ASTM A36
3	MANWAY COVER 20" 8-BOLT	TMCDR20201C1	1	ASTM A572 GRADE 50 TYPE 2



- NOTES:
1. AAR APPROVAL # E-182113.
  2. TEST PER Q-2.15.7.
  3. SEE DOCUMENT D-008 FOR WELDING PROCEDURES.
  4. WELD ACCEPTANCE CRITERIA TO MEET DOCUMENT D-005.
  5. PART TO BE LOT CONTROLLED.
  6. PART MUST BE FREE OF WELD SPATTER.

REV	BY	DATE	DESCRIPTION
D	WEB	5-16-19	REMOVED QAP4A-1 NOTE; Q-2.15.7 WAS QAP4C-1; D-008 WAS DSS 12; ADDED D-005 NOTE; AAR # WAS E-089005
C	RJP	1-3-18	HINGE WELD WAS 3/8"; 4.00 +.00/-0.06 WAS 4.00; LOT CONTROL NOTE WAS QAP5A-1; ADDED 2X (1/4) & NOTE 6
B	JG	7-7-17	UPDATED TMCDR20201C1 GEOMETRY; ADDED "SALCO" TO COVER STAMP
A	JG	6-26-17	RELEASED FOR PRODUCTION

UNLESS OTHERWISE SPECIFIED DIMENSIONAL TOLERANCES FRACTIONAL: $\pm 1/16$ X.XX: $\pm .03$ X.XXX: $\pm .015$ ANGULAR: $\pm 1^\circ$ DEBURR ALL SHARP EDGES. ALL MACHINED SURFACES TO HAVE A 125 RMS FINISH UNLESS NOTED OTHERWISE.	DRAWN BY: JG
THIRD ANGLE PROJECTION	CHECKED BY: EJF
	PROTOTYPE BY: JG
	PROTOTYPE DATE: 5/17/2017
	APPROVED FOR PRODUCTION BY: EJF
	PRODUCTION DATE: 6/26/2017

**SALCO PRODUCTS, INC.**

PART NAME: **MANWAY COVER 20" 8-BOLT**

MATERIAL: **SEE BOM**

PROJECT #: **R170516** SHEET #: **1 OF 1** SCALE: **2:3**

DRAWING #: **E45479** PART #: **TMC20201C101**