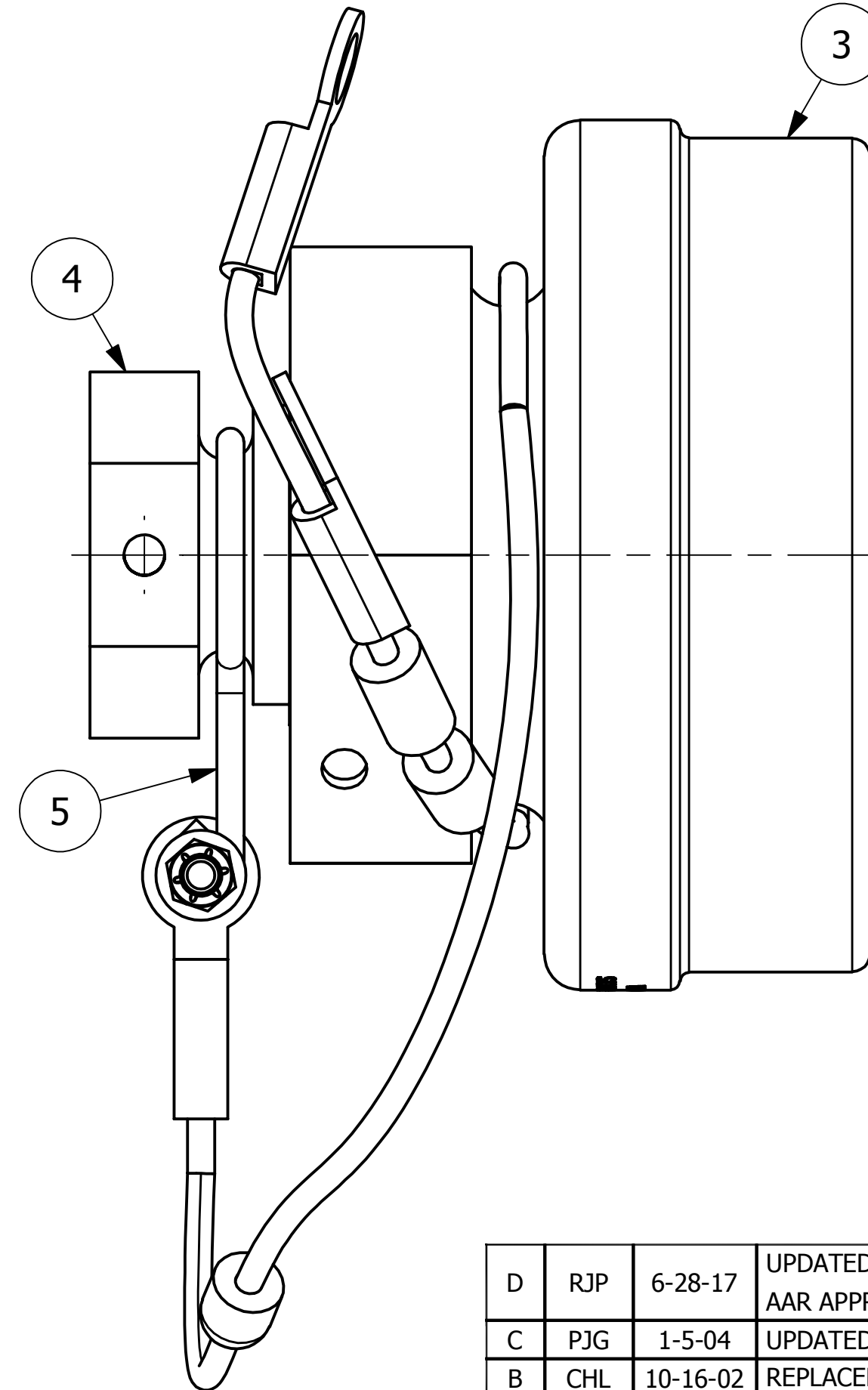
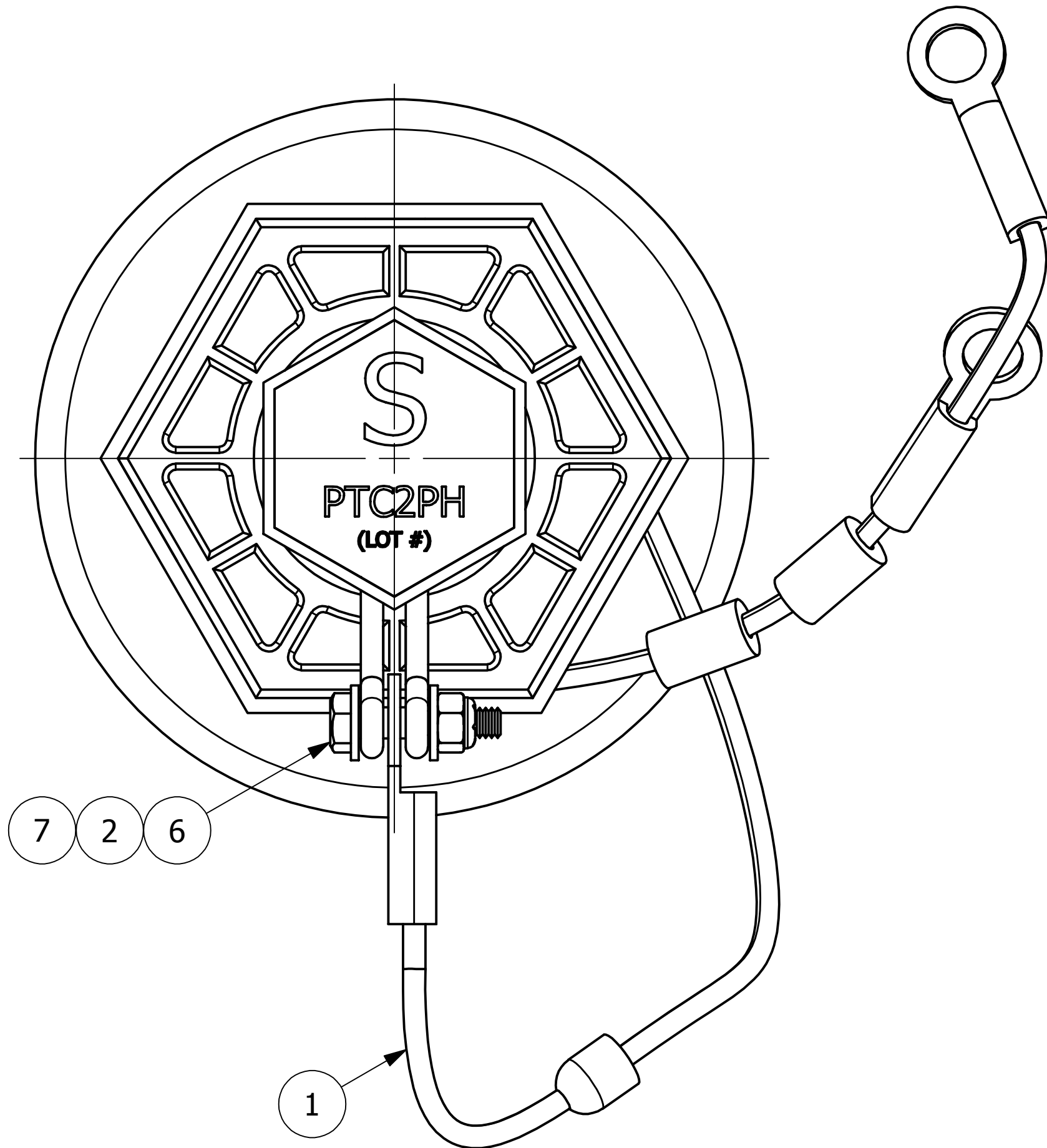


| NO. | PART NAME | PART# | REQ'D | MATERIAL |
|-----|-------------------------|----------|-------|----------|
| 1 | CABLE ASSEMBLY 3/16" | B9493 | 1 | 302 SS |
| 2 | HEX LOCK NUT 1/4"-20 | HCN20S | 1 | 18-8 SS |
| 3 | BOTTOM OUTLET CAP 4" | PBC400 | 1 | NYLON |
| 4 | PLUG 2" | PTC2PH | 1 | NYLON |
| 5 | LOCK RING 2" | SS2TCLR | 1 | 304 SS |
| 6 | HEX BOLT 1/4"-20X1 1/4" | TE2CLRBS | 1 | 18-8 SS |
| 7 | FLAT WASHER 1/4" SAE | VAISW30 | 2 | 18-8 SS |



NOTES:

- 5 1/4"-4 UN-2B THREADS CONFORM TO ANSI B1.1 AND FIGURE E18 OF AAR TANK CAR MANUAL.
- AAR APPROVAL # E-099015.

| REV | BY | DATE | DESCRIPTION |
|-----|-----|----------|---|
| D | RJP | 6-28-17 | UPDATED TO CURRENT STANDARDS AAR APPROVAL # WAS E-989047 |
| C | PJG | 1-5-04 | UPDATED VIEW OF CAP |
| B | CHL | 10-16-02 | REPLACED PTC2P W/PTC2PH |
| A | CHL | 10-10-02 | REMOVED SCAIL |

| | | |
|--|-----------------------------|----------|
| <small>UNLESS OTHERWISE SPECIFIED DIMENSIONAL TOLERANCES FRACTIONAL: ±1/16 X.XX: ±.03 X.XXX: ±.015 ANGLE: ±1° DEBURR ALL SHARP EDGES. ALL MACHINED SURFACES TO HAVE A 125 RMS FINISH UNLESS NOTED OTHERWISE.</small> | DRAWN BY: | CHL |
| | CHECKED BY: | ACC |
| | PROTOTYPE BY: | CHL |
| | PROTOTYPE DATE: | 5/9/2002 |
| | APPROVED FOR PRODUCTION BY: | ACC |
| | PRODUCTION DATE: | 5/9/2002 |

SALCO PRODUCTS, INC.

PART NAME:
BOTTOM OUTLET CAP 4"

MATERIAL: **SEE BOM**

PROJECT #: _____ SHEET #: **1 OF 1** SCALE: **1:1**

DRAWING #: **C16881** PART #: **PBC40A**