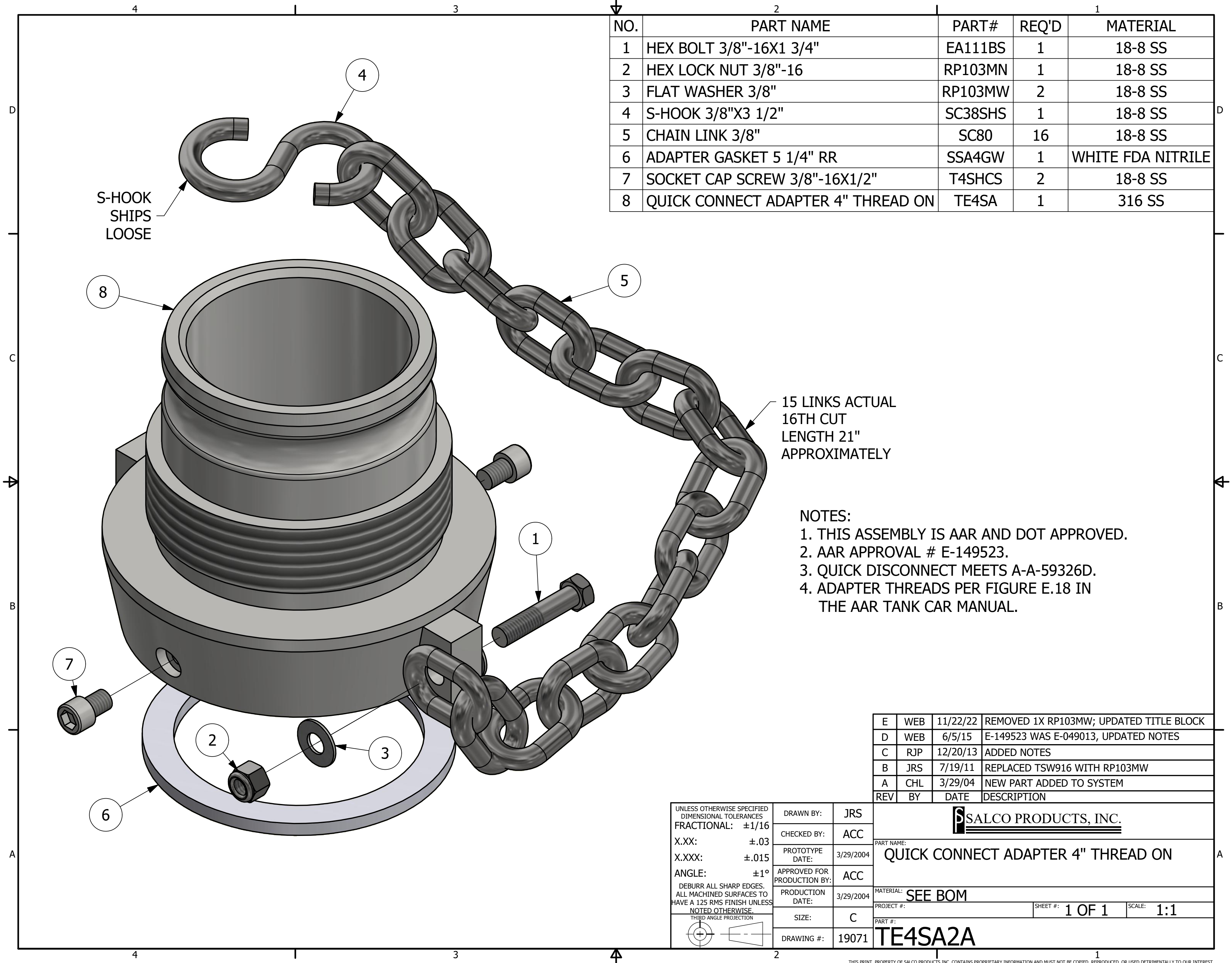


NO.	PART NAME	PART#	REQ'D	MATERIAL
1	HEX BOLT 3/8"-16X1 3/4"	EA111BS	1	18-8 SS
2	HEX LOCK NUT 3/8"-16	RP103MN	1	18-8 SS
3	FLAT WASHER 3/8"	RP103MW	2	18-8 SS
4	S-HOOK 3/8"X3 1/2"	SC38SHS	1	18-8 SS
5	CHAIN LINK 3/8"	SC80	16	18-8 SS
6	ADAPTER GASKET 5 1/4" RR	SSA4GW	1	WHITE FDA NITRILE
7	SOCKET CAP SCREW 3/8"-16X1/2"	T4SHCS	2	18-8 SS
8	QUICK CONNECT ADAPTER 4" THREAD ON	TE4SA	1	316 SS



15 LINKS ACTUAL
16TH CUT
LENGTH 21"
APPROXIMATELY

- NOTES:
 1. THIS ASSEMBLY IS AAR AND DOT APPROVED.
 2. AAR APPROVAL # E-149523.
 3. QUICK DISCONNECT MEETS A-A-59326D.
 4. ADAPTER THREADS PER FIGURE E.18 IN THE AAR TANK CAR MANUAL.

REV	BY	DATE	DESCRIPTION
E	WEB	11/22/22	REMOVED 1X RP103MW; UPDATED TITLE BLOCK
D	WEB	6/5/15	E-149523 WAS E-049013, UPDATED NOTES
C	RJP	12/20/13	ADDED NOTES
B	JRS	7/19/11	REPLACED TSW916 WITH RP103MW
A	CHL	3/29/04	NEW PART ADDED TO SYSTEM

UNLESS OTHERWISE SPECIFIED DIMENSIONAL TOLERANCES FRACTIONAL: ±1/16 X.XX: ±.03 X.XXX: ±.015 ANGLE: ±1° DEBURR ALL SHARP EDGES. ALL MACHINED SURFACES TO HAVE A 125 RMS FINISH UNLESS NOTED OTHERWISE. THIRD ANGLE PROJECTION	DRAWN BY:	JRS
	CHECKED BY:	ACC
	PROTOTYPE DATE:	3/29/2004
	APPROVED FOR PRODUCTION BY:	ACC
	PRODUCTION DATE:	3/29/2004
	SIZE:	C
	DRAWING #:	19071

SALCO PRODUCTS, INC.

PART NAME:
QUICK CONNECT ADAPTER 4" THREAD ON

MATERIAL: **SEE BOM**

PROJECT #: SHEET #: **1 OF 1** SCALE: **1:1**

PART #:
TE4SA2A