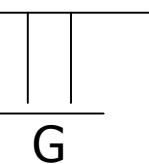
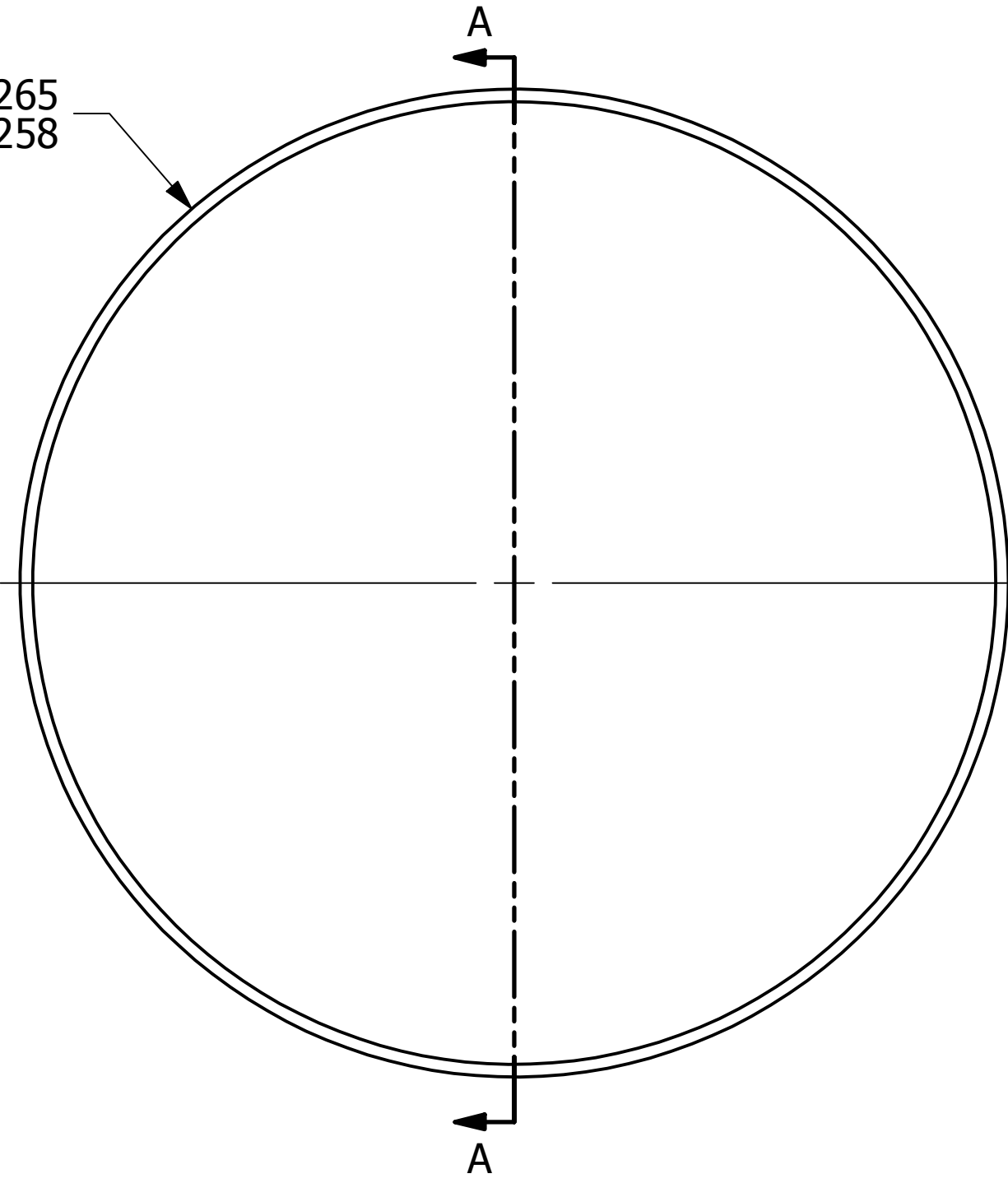
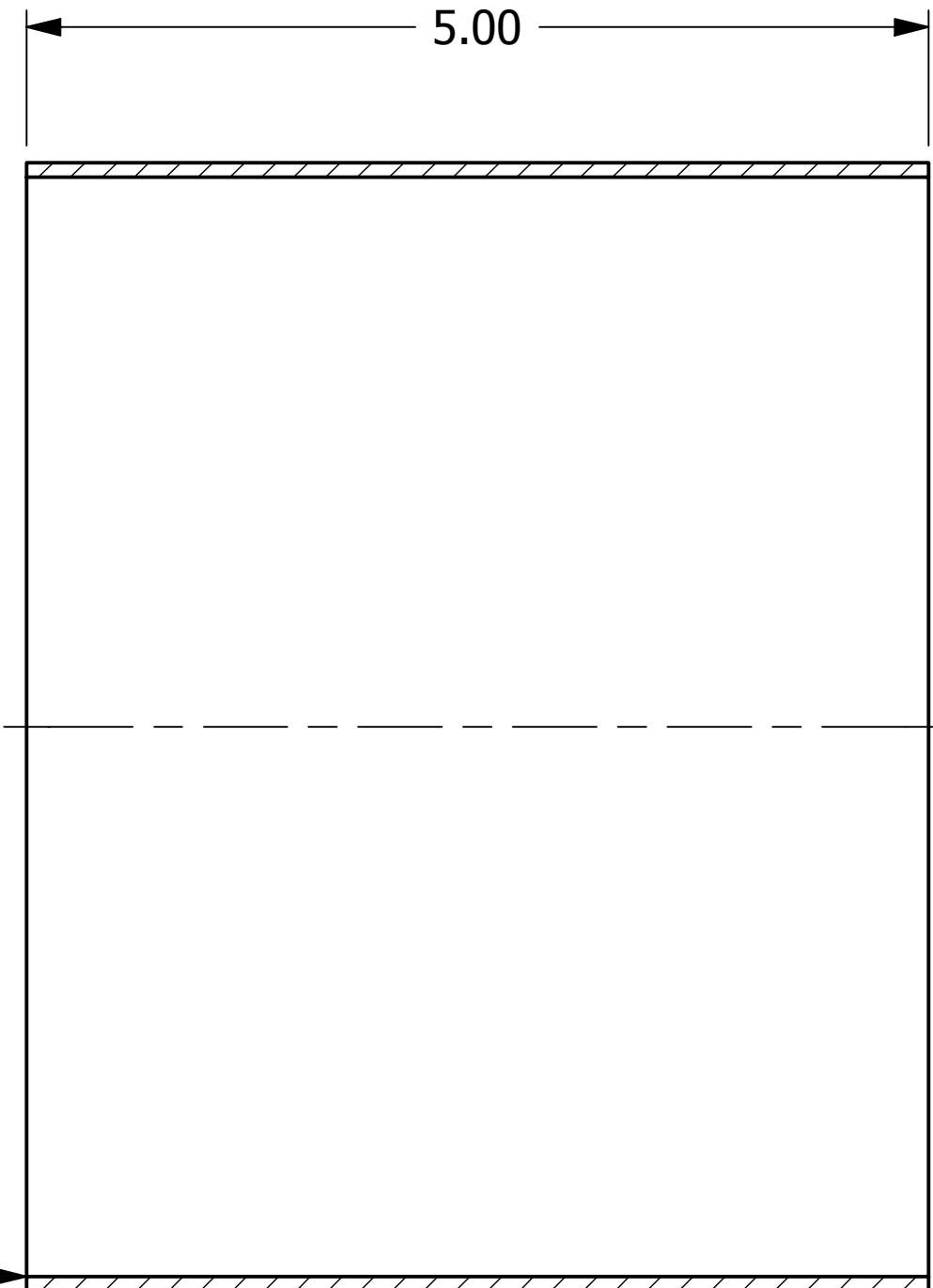


Ø6.265  
6.258



DEBURR INSIDE & OUTSIDE  
EDGES ON BOTH ENDS



SECTION A-A

- NOTES:
1. PART MAY BE WELDED OR SEAMLESS.
  2. SEE DOCUMENT DSS 12 FOR WELDING SPECIFICATIONS.
  3. PLATE THICKNESS IS 13 GAUGE.

REV	BY	DATE	DESCRIPTION
F	JG	12-6-17	UPDATED TITLE BLOCK, NOTES, DIMS, PART NAME
E	BRG	3-9-09	ADDED WELD SYMBOL AND NOTES
D	CHL	6-27-02	UPDATED PRINT TO NEW STANDARDS
C	CLH	7-31-96	ENLARGED TEXT
B	MR	4-8-96	ADDED NEW BORDER
A	FRS	1-22-91	ADDED TOLERANCE TO RPSN111/MM6

<small>UNLESS OTHERWISE SPECIFIED DIMENSIONAL TOLERANCES FRACTIONAL: ±1/16 X.XX: ±.03 X.XXX: ±.015 ANGLE: ±1° DEBURR ALL SHARP EDGES. ALL MACHINED SURFACES TO HAVE A 125 RMS FINISH UNLESS NOTED OTHERWISE.</small>	DRAWN BY:	JDA
	CHECKED BY:	
	PROTOTYPE BY:	JDA
	PROTOTYPE DATE:	9/15/1989
	APPROVED FOR PRODUCTION BY:	JDA
	PRODUCTION DATE:	9/15/1989

**SALCO PRODUCTS, INC.**

PART NAME: **OUTLET NOZZLE 6"**

MATERIAL: **304 SS**

PROJECT #: \_\_\_\_\_ SHEET #: **1 OF 1** SCALE: **1:1**

DRAWING #: **C8105** PART #: **RPSNMM6**

