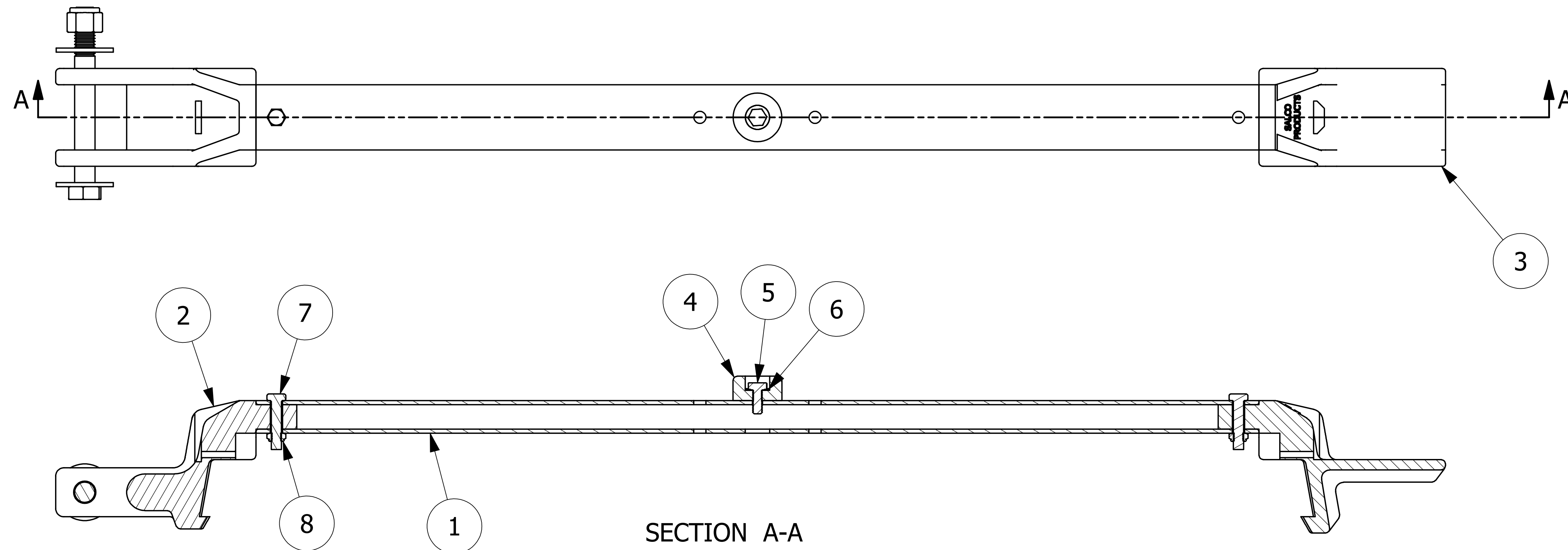


NO.	PART NAME	PART #	REQ'D	MATERIAL
1	HATCH COVER ARM	AE3007	1	ALUMINUM
2	HATCH COVER HINGE ASSEMBLY 30"	HEC3007PSTA	1	SEE DWG
3	LATCH 30"	LEC30TR	1	ALUMINUM
4	BUMPER	PHC30B	1	SBR
5	HEX BOLT 5/16"-18 X 3/4"	GA34	1	CS Z/P
6	SPRING WASHER 3/8"	KL103SW	1	1074 CS
7	HEX BOLT 5/16"-18X1 1/2"	R20ABS	2	18-8 SS
8	HEX LOCK NUT 5/16"-18	R20ANS	2	18-8 SS



UNLESS OTHERWISE SPECIFIED DIMENSIONAL TOLERANCES FRACTIONAL: ±1/16 X.XX: ±.03 X.XXX: ±.015 ANGULAR: ±1° DEBURR ALL SHARP EDGES. ALL MACHINED SURFACES TO HAVE A 125 RMS FINISH UNLESS NOTED OTHERWISE. THIRD ANGLE PROJECTION	DRAWN BY:	PJG
	CHECKED BY:	
	PROTOTYPE BY:	PJG
	PROTOTYPE DATE:	8/20/2008
	APPROVED FOR PRODUCTION BY:	PJG
	PRODUCTION DATE:	8/27/2009

A	PJG	8-27-09	RELEASED FOR PRODUCTION
REV	BY	DATE	DESCRIPTION
PART NAME: <b>HATCH COVER ARM ASSEMBLY 30"</b>			
MATERIAL: <b>SEE BOM</b>			
PROJECT #:	060314	SHEET #:	1 OF 1
DRAWING #:	D25825	PART #:	AE3007PSTRA
SCALE: 1:2			

THIS PRINT, PROPERTY OF SALCO PRODUCTS INC. CONTAINS PROPRIETARY INFORMATION AND MUST NOT BE COPIED, REPRODUCED, OR USED DETRIMENTALLY TO OUR INTEREST.