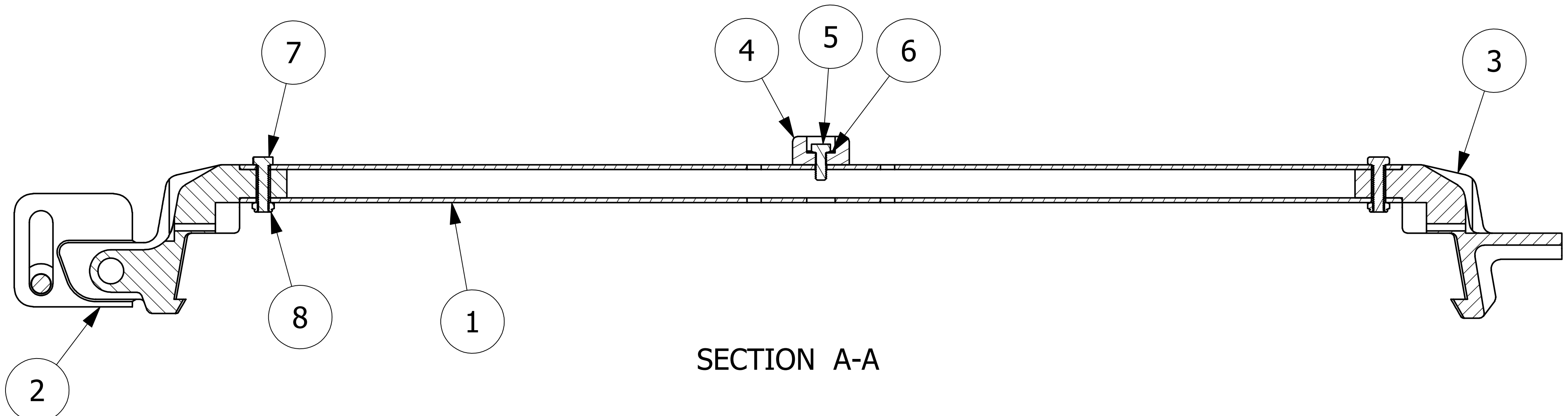
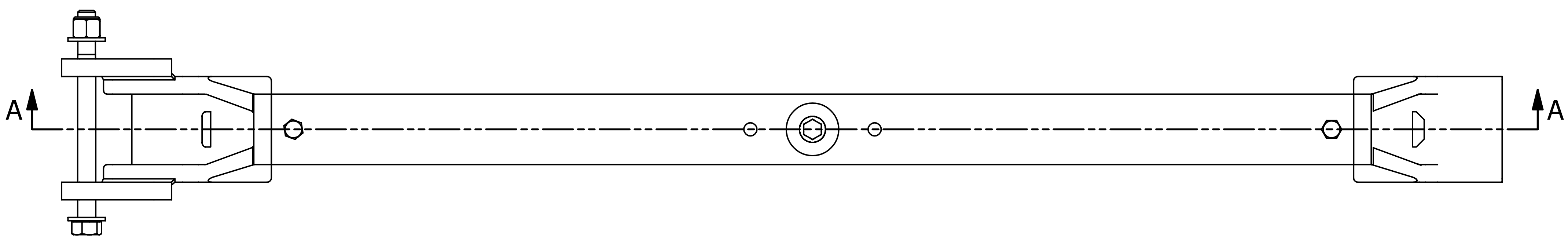


NO.	PART NAME	PART #	REQ'D	MATERIAL
1	HATCH COVER ARM	AE3007	1	ALUMINUM
2	HATCH COVER HINGE ASSEMBLY 30"	HEC3007PSTA3	1	SEE DWG
3	LATCH CASTING 30"	LEC30TR2	1	ALUMINUM
4	BUMPER	PHC30B	1	SBR
5	HEX BOLT 5/16"-18 X 3/4"	GA34	1	CS Z/P
6	SPRING WASHER 3/8"	KL103SW	1	1074 CS
7	HEX BOLT 5/16"-18X1 1/4"	R20ABS	2	18-8 SS
8	HEX LOCK NUT 5/16"-18	R20ANS	2	18-8 SS



SECTION A-A

B	CHL	6-23-10	UPDATED VIEW OF HEC3007PSTA3
A	CHL	5-14-10	NEW PART ADDED TO SYSTEM
REV	BY	DATE	DESCRIPTION

<small>UNLESS OTHERWISE SPECIFIED DIMENSIONAL TOLERANCES</small> FRACTIONAL: ±1/16 X.XX: ±.03 X.XXX: ±.015 ANGULAR: ±1° <small>THIS PRINT, PROPERTY OF SALCO PRODUCTS INC, CONTAINS PROPRIETARY INFORMATION AND MUST NOT BE COPIED, REPRODUCED, OR USED DETRIMENTALLY TO OUR INTEREST.</small> THIRD ANGLE PROJECTION	DRAWN BY:	CHL
	CHECKED BY:	VD
	PROTOTYPE BY:	CHL
	PROTOTYPE DATE:	3/12/2010
	APPROVED FOR PRODUCTION BY:	VD
	PRODUCTION DATE:	5/14/2010

SALCO PRODUCTS, INC.

HATCH COVER ARM ASSEMBLY 30"

MATERIAL: **SEE BOM**

PROJECT #: **WAG0791** SHEET #: **1 OF 1** SCALE: **1:2**

DRAWING #: **D28293** PART #: **AE3007PSTA3**