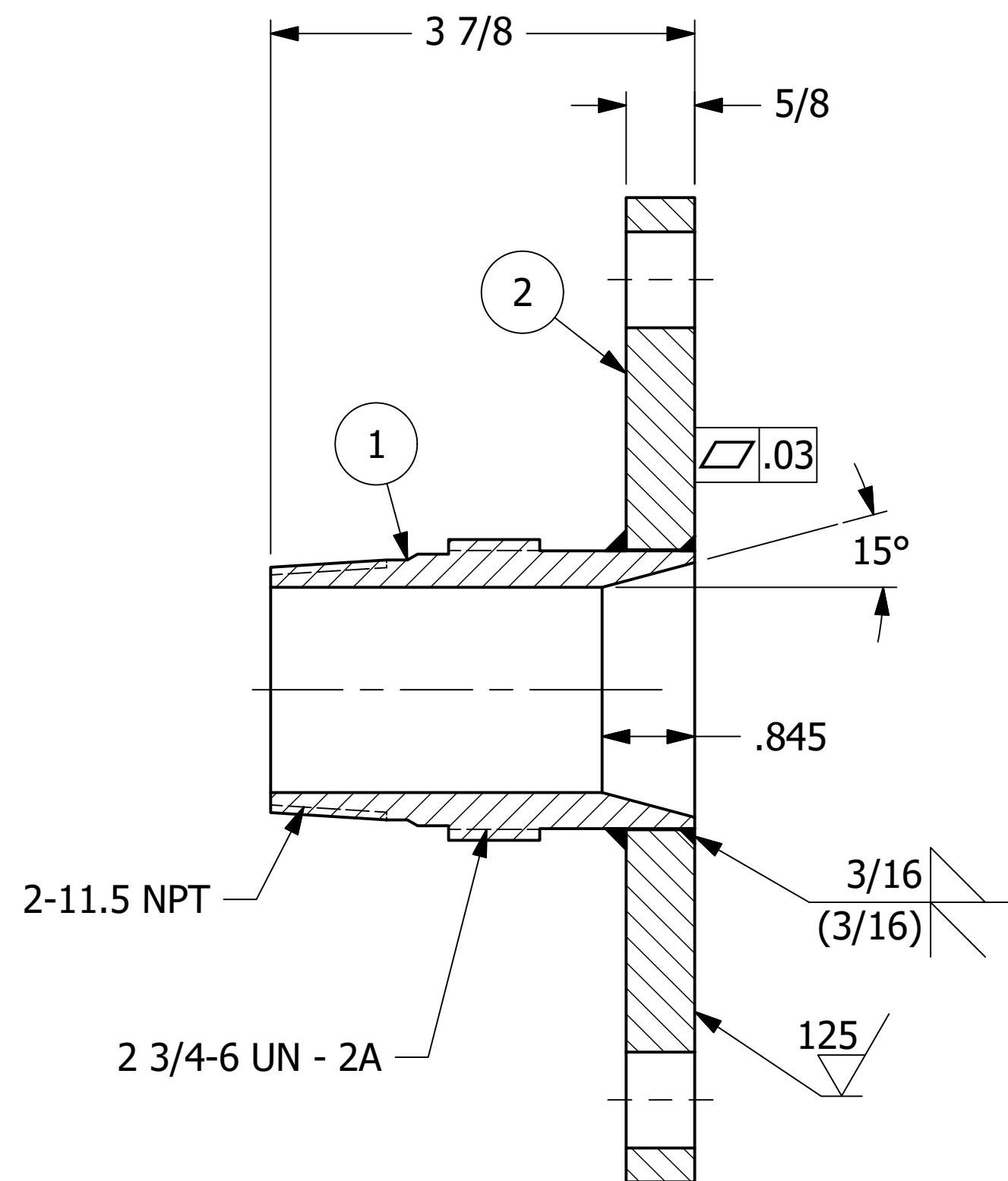
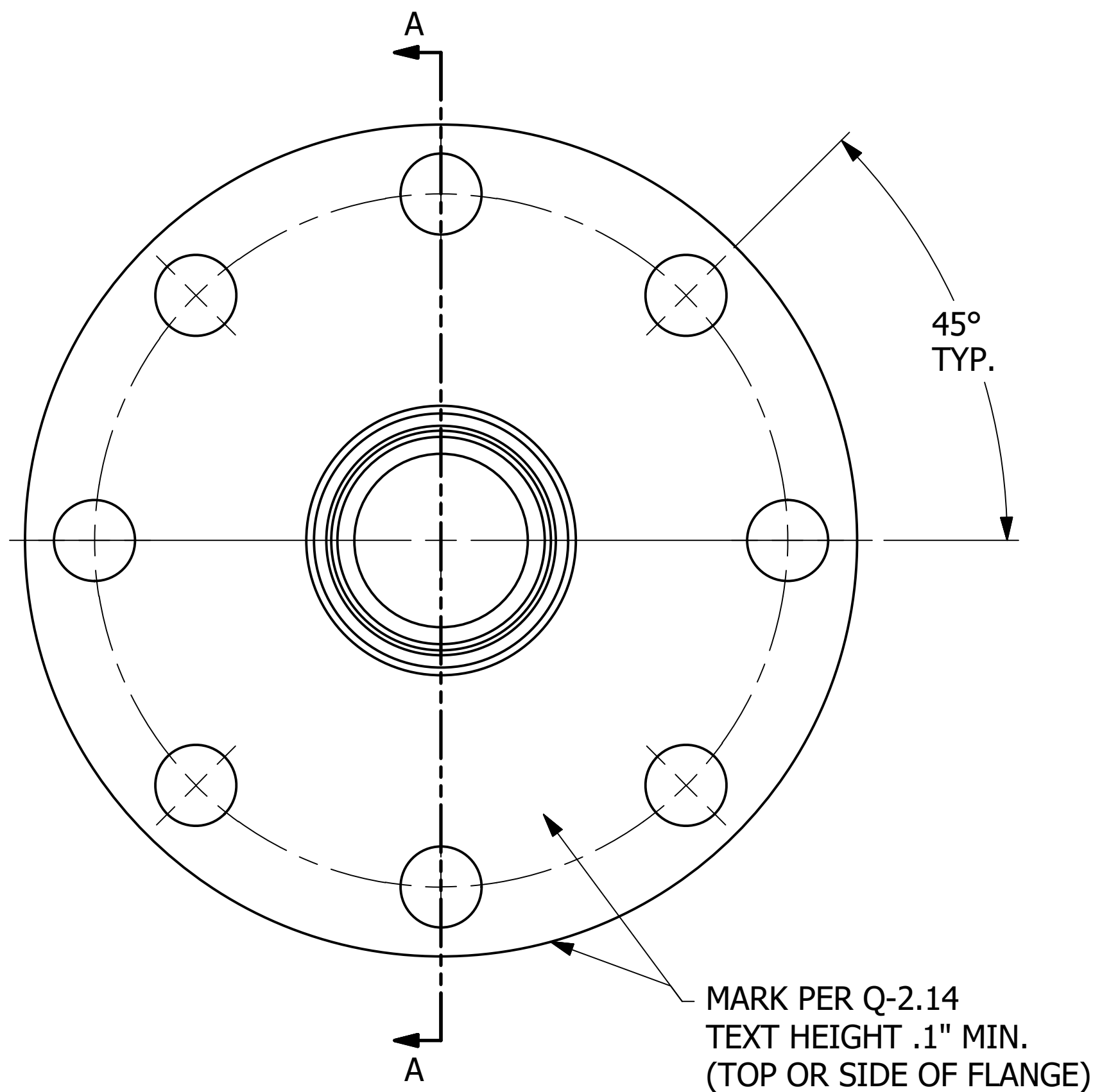


NO.	PART NAME	PART#	REQ'D	MATERIAL
1	INSERT 2"	A35587	1	ASTM A269 TP316L/UNS S31603 OR A511 MT316L
2	PIPE FLANGE 7 1/2"	C48875	1	ASTM A240 OR A276 TYPE 316L/UNS S31603



SECTION A-A

NOTES.

1. SEE DOCUMENT WPS-F03, WPS-F05, WPS-M07, OR WPS-T06 FOR WELDING PROCEDURES.
2. WELD ACCEPTANCE CRITERIA TO MEET DOCUMENT D-005.
3. TEST PER Q-2.15.7.
4. SEE DOCUMENT Q-2.14 FOR MARKING PROCEDURE.
5. FLANGE GASKET FACE TO BE FREE OF WELD SPATTER.

REV	BY	DATE	DESCRIPTION
C	CHL	7/19/21	ADDED SHEET 3

SEE FINAL SHEET FOR COMPLETE LIST OF DRAWING REVISIONS

UNLESS OTHERWISE SPECIFIED DIMENSIONAL TOLERANCES FRACTIONAL: ±1/16 X.XX: ±.03 X.XXX: ±.015 ANGLE: ±1° DEBURR ALL SHARP EDGES. ALL MACHINED SURFACES TO HAVE A 125 RMS FINISH UNLESS NOTED OTHERWISE.	DRAWN BY: ACC	
	CHECKED BY:	
	PROTOTYPE DATE: 11/30/2004	
	APPROVED FOR PRODUCTION BY: ACC	
	PRODUCTION DATE: 11/30/2004	
	SIZE: C	
	DRAWING #: 19874	

SALCO PRODUCTS, INC.

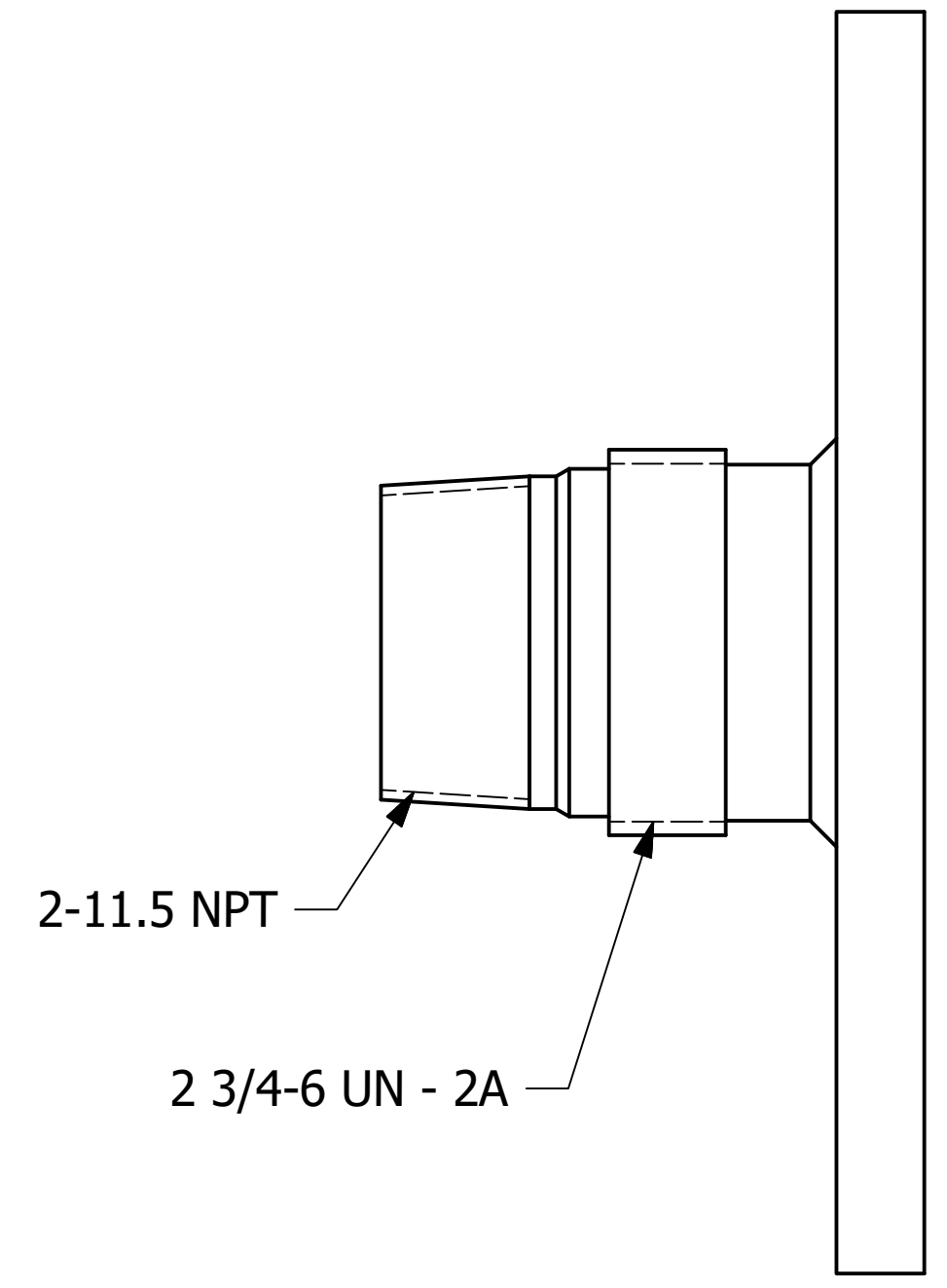
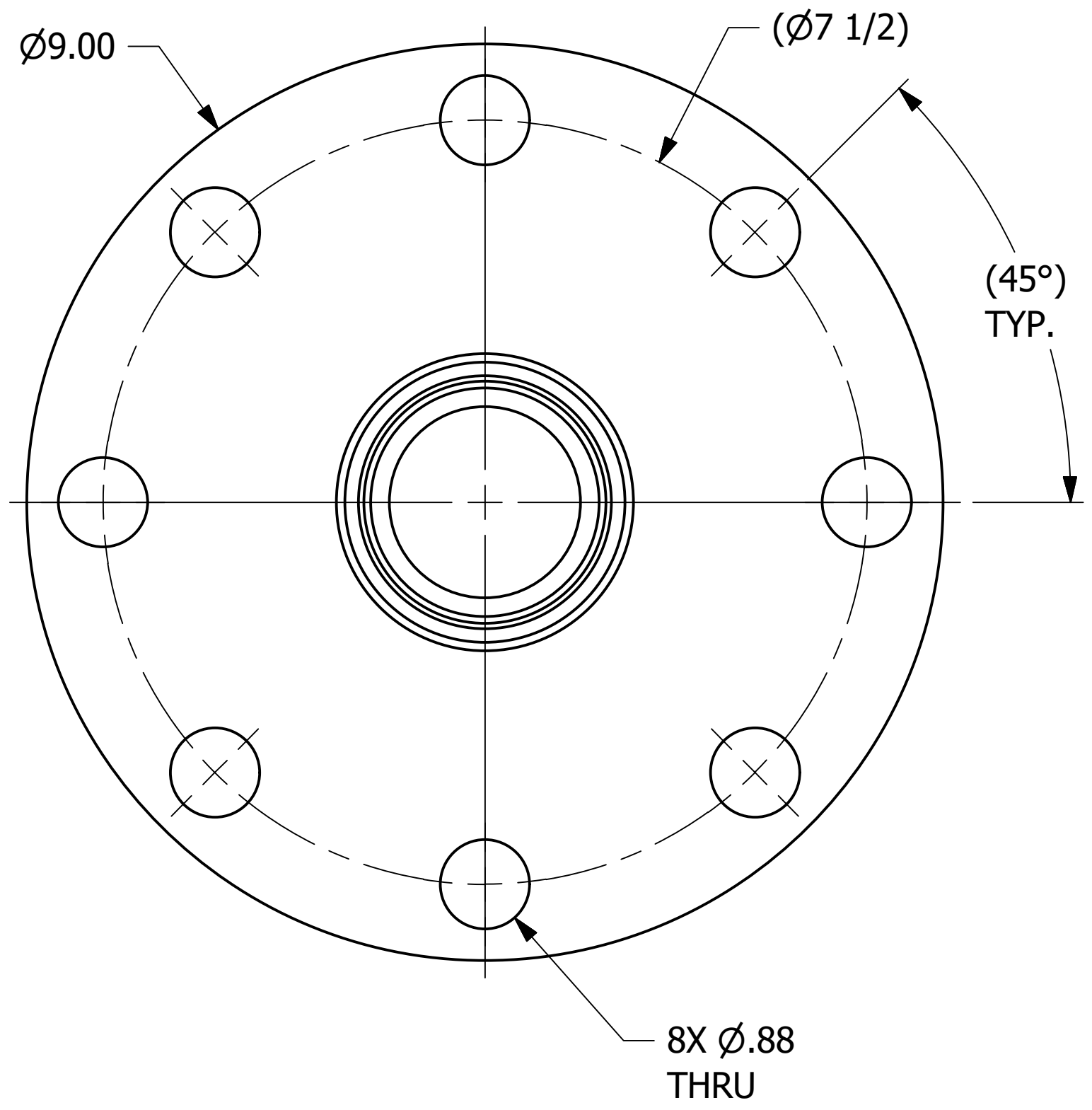
PART NAME: **TOP FITTING FLANGE 2"**

MATERIAL: **SEE BOM**

PROJECT #: **130828FR1** SHEET #: **1 OF 3** SCALE: **3:4**

PART #: **TE2S75FH**

NO.	PART NAME	PART #	REQ'D	MATERIAL
1	TOP FITTING FLANGE 2"	TE2S75FASH1	1	316L SS



REV	BY	DATE	DESCRIPTION
C	CHL	7/19/21	ADDED SHEET 3

SEE FINAL SHEET FOR COMPLETE LIST OF DRAWING REVISIONS

UNLESS OTHERWISE SPECIFIED DIMENSIONAL TOLERANCES FRACTIONAL: ±1/16 X.XX: ±.03 X.XXX: ±.015 ANGLE: ±1° DEBURR ALL SHARP EDGES. ALL MACHINED SURFACES TO HAVE A 125 RMS FINISH UNLESS NOTED OTHERWISE. THIRD ANGLE PROJECTION	DRAWN BY:	ACC
	CHECKED BY:	
	PROTOTYPE DATE:	11/30/2004
	APPROVED FOR PRODUCTION BY:	ACC
	PRODUCTION DATE:	11/30/2004
	SIZE:	C
DRAWING #:	19874	

SALCO PRODUCTS, INC.

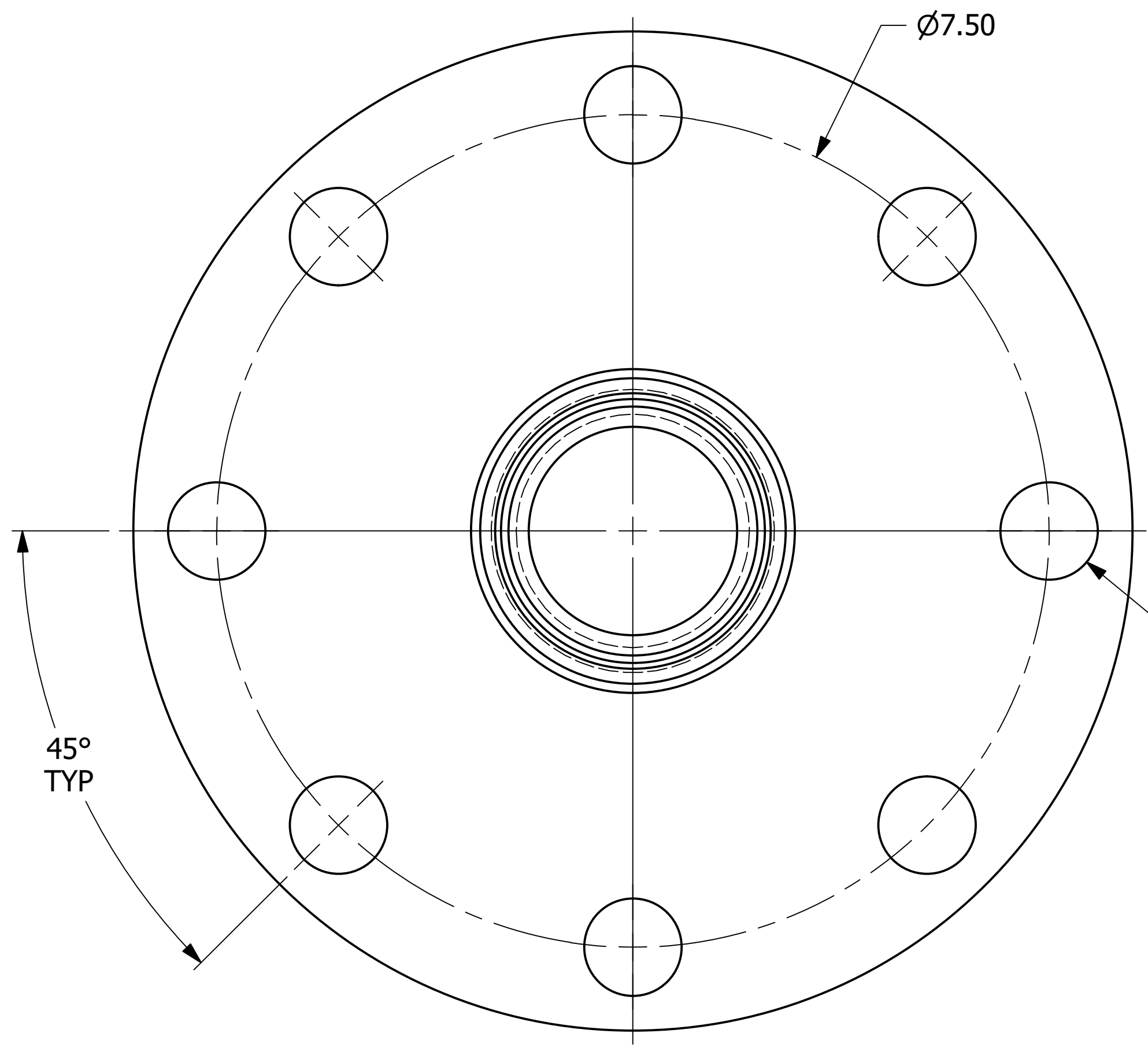
PART NAME: **TOP FITTING FLANGE 2"**

MATERIAL: **SEE BOM**

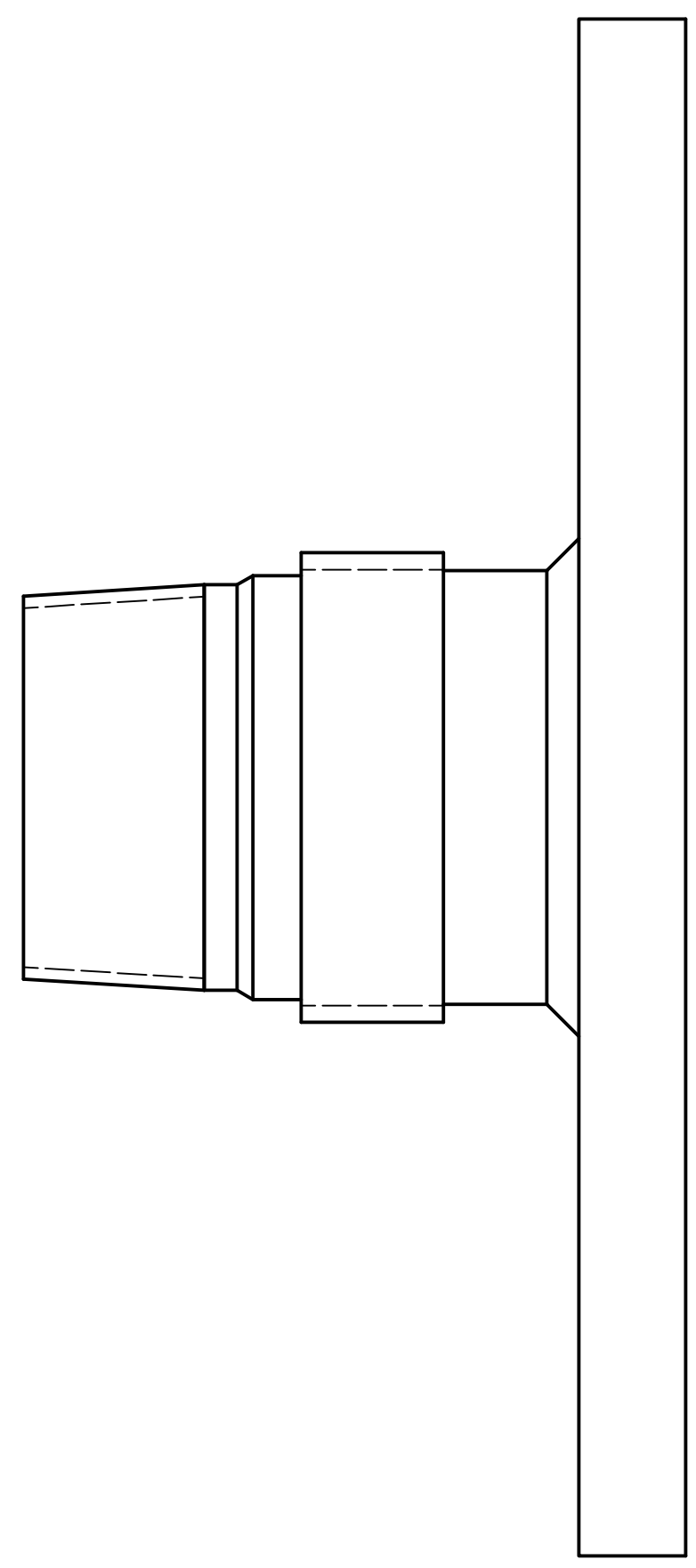
PROJECT #: **130828FR1** SHEET #: **2 OF 3** SCALE: **3:4**

PART #: **TE2S75FH**

NO.	PART NAME	PART#	REQ'D	MATERIAL
1	TOP FITTING FLANGE 2"	TE2S75FASH4	1	316L SS



8X $\phi 0.88$
THRU



REV	BY	DATE	DESCRIPTION
C	CHL	7/19/21	ADDED SHEET 3
B	WEB	8/6/20	ADDED SHEET 2; UPDATED TITLEBLOCK; UPDATED BOM MATERIALS
A	WEB	4/16/19	UPDATED TO CURRENT DRAFTING STANDARDS; ADDED BOM; UPDATED NOTES

NOTE:
BREAK/DEBURR ALL SHARP CORNERS AND EDGES.

UNLESS OTHERWISE SPECIFIED DIMENSIONAL TOLERANCES FRACTIONAL: $\pm 1/16$ X.XX: ± 0.03 X.XXX: ± 0.015 ANGLE: $\pm 1^\circ$ DEBURR ALL SHARP EDGES. ALL MACHINED SURFACES TO HAVE A 125 RMS FINISH UNLESS NOTED OTHERWISE.	DRAWN BY: ACC
	CHECKED BY:
	PROTOTYPE DATE: 11/30/2004
	APPROVED FOR PRODUCTION BY: ACC
	PRODUCTION DATE: 11/30/2004
	SIZE: C
	DRAWING #: 19874

SALCO PRODUCTS, INC.

PART NAME: **TOP FITTING FLANGE 2"**

MATERIAL: **SEE BOM**

PROJECT #: **130828FR1** SHEET #: **3 OF 3** SCALE: **1:1**

PART #: **TE2S75FH**