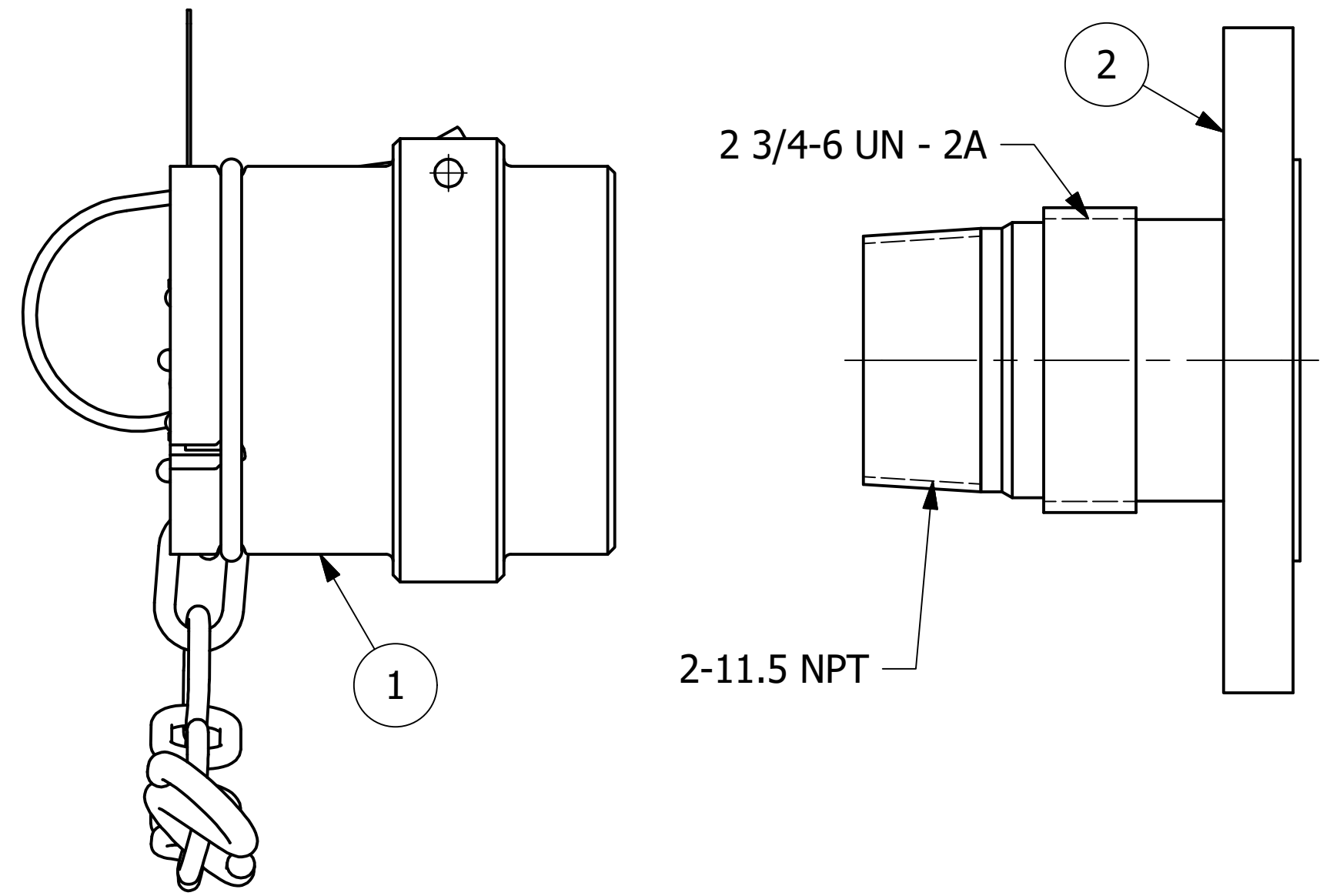
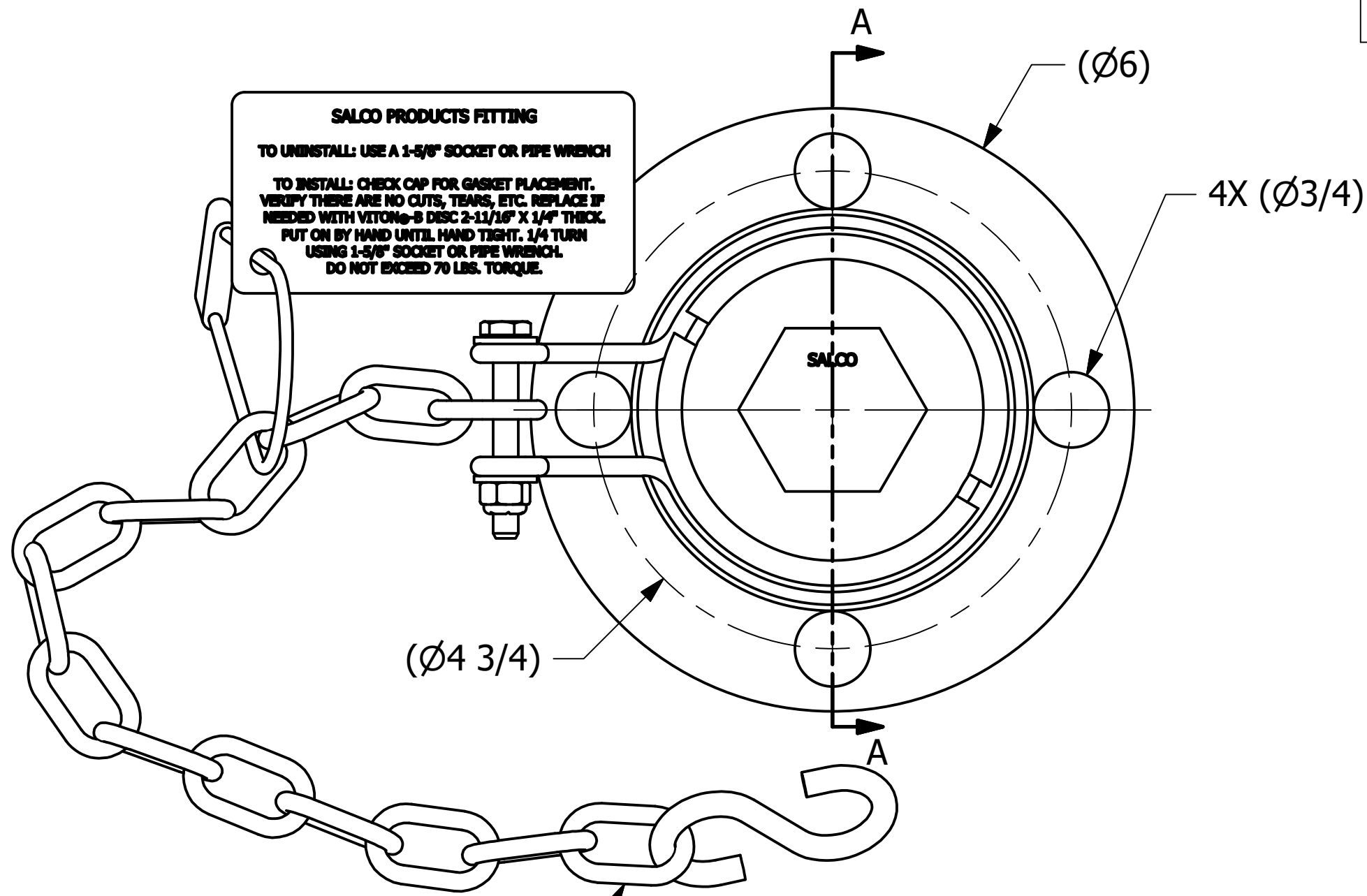
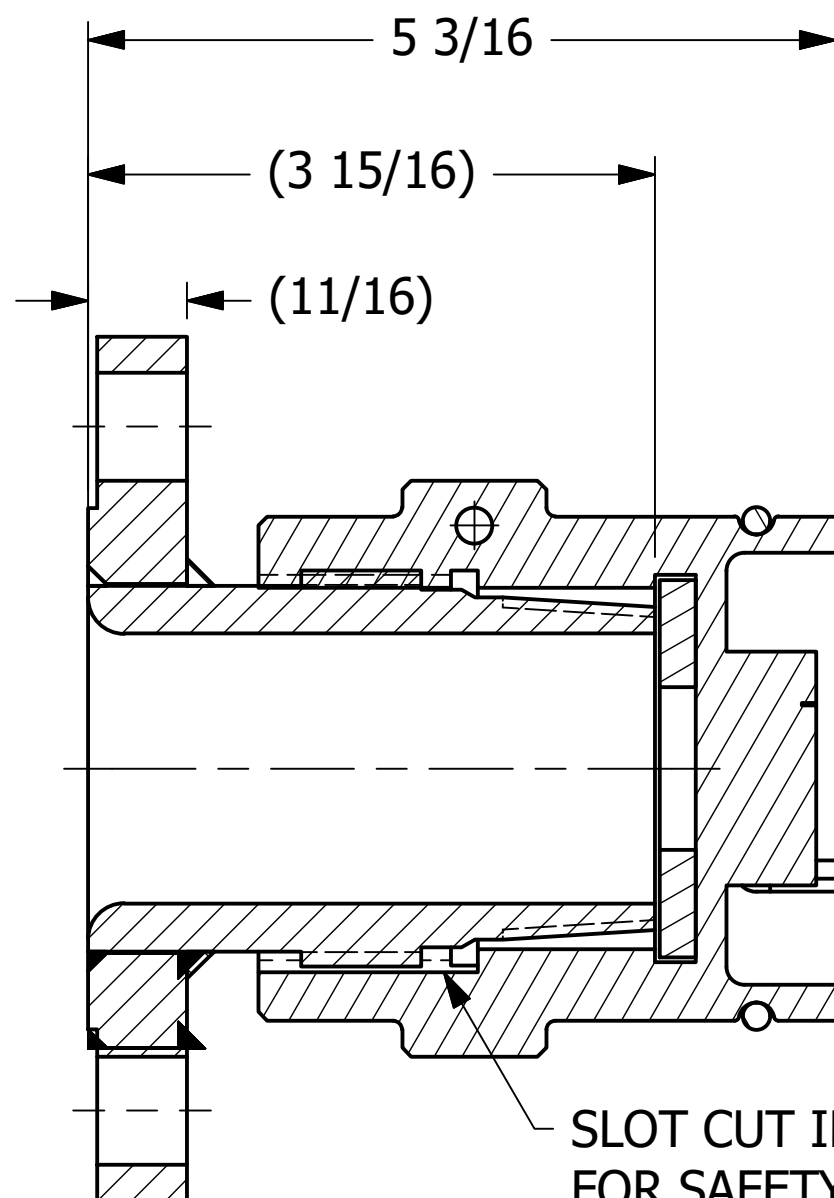


NO.	PART NAME	PART #	REQ'D	MATERIAL
1	QUICK CONNECT CAP 2" THREAD ON	TE20S416DLPDC07A	1	416 SS
2	QUICK CONNECT 2" FLANGED	TE2S434F	1	316L SS



14 LINKS OF 3/16" 18-8 SS CHAIN
 APPROXIMATE LENGTH IS 14"



SECTION A-A

NOTES:

- PART# IS TE2S416DCS434F07A.
- GASKET MATERIAL IS BLACK VITON B.

REV	BY	DATE	DESCRIPTION
C	TAK	12/9/20	UPDATED TITLE BLOCK & VIEW TO SHOW ID IN GASKET
B	RJP	8/25/17	UPDATED CAP TO LIPPED DESIGN
A	KHK	3/13/13	RELEASED FOR PRODUCTION

UNLESS OTHERWISE SPECIFIED DIMENSIONAL TOLERANCES FRACTIONAL: ±1/16 X.XX: ±.03 X.XXX: ±.015 ANGLE: ±1° DEBURR ALL SHARP EDGES. ALL MACHINED SURFACES TO HAVE A 125 RMS FINISH UNLESS NOTED OTHERWISE THIRD ANGLE PROJECTION	DRAWN BY: KHK CHECKED BY: JRO PROTOTYPE DATE: 3/8/2013 APPROVED FOR PRODUCTION BY: WRB PRODUCTION DATE: 3/13/2013 SIZE: C DRAWING #: 35624
---	--

SALCO PRODUCTS, INC.		
PART NAME: TOP FITTING ASSEMBLY 2" FLANGED		
MATERIAL: SEE BOM	PROJECT #: 130306FR1	SHEET #: 1 OF 1
PART #: SEE NOTE		
SCALE: 3:4		