

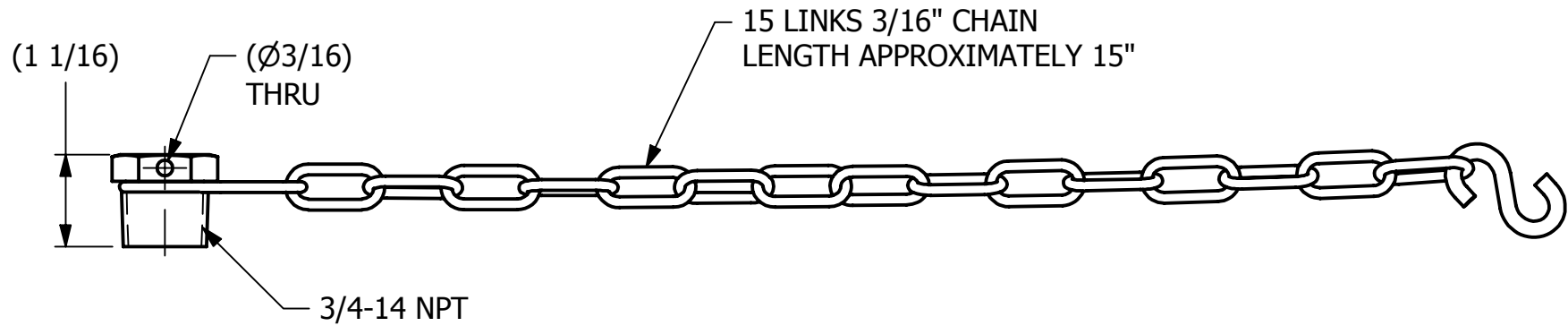
2

1

| NO. | PART NAME | PART# | REQ'D | MATERIAL |
|-----|---------------------|------------|-------|----------|
| 1 | PLUG 3/4" | TC075416PH | 1 | 416 SS |
| 2 | CHAIN ASSEMBLY | CH1316PA2 | 1 | 18-8 SS |
| 3 | S-HOOK 3/16"X1 1/2" | SC316SHS | 1 | 304 SS |

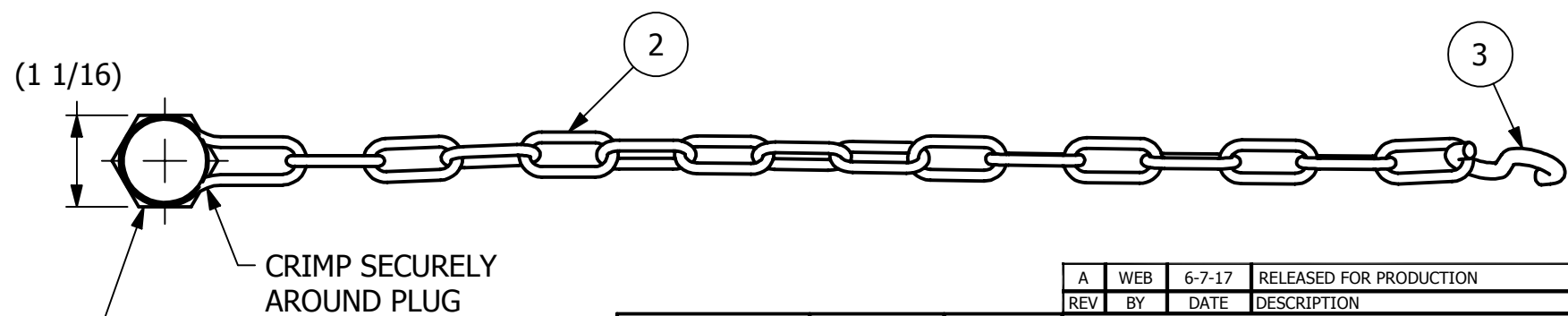
B

B



A

A



| | | | |
|-----|-----|--------|-------------------------|
| A | WEB | 6-7-17 | RELEASED FOR PRODUCTION |
| REV | BY | DATE | DESCRIPTION |

| | | |
|---|-----------------------------|----------|
| <small>UNLESS OTHERWISE SPECIFIED DIMENSIONAL TOLERANCES FRACTIONAL: ±1/16 X.XX: ±.03 X.XXX: ±.015 ANGULAR: ±1° DEBURR ALL SHARP EDGES. ALL MACHINED SURFACES TO HAVE A 125 RMS FINISH UNLESS NOTED OTHERWISE. THIRD ANGLE PROJECTION</small> | DRAWN BY: | WEB |
| | CHECKED BY: | EJF |
| | PROTOTYPE BY: | WEB |
| | PROTOTYPE DATE: | 6/5/2017 |
| | APPROVED FOR PRODUCTION BY: | EJF |
| | PRODUCTION DATE: | 6/7/2017 |

SALCO PRODUCTS, INC.

PART NAME:
PLUG ASSEMBLY 3/4"

MATERIAL: SEE BOM

PROJECT #: R170602F1 SHEET #: 1 OF 1 SCALE: 1:1

DRAWING #: **A45590** PART #: **TC075416PHA**

THIS PRINT, PROPERTY OF SALCO PRODUCTS INC, CONTAINS PROPRIETARY INFORMATION AND MUST NOT BE COPIED, REPRODUCED, OR USED DETRIMENTALLY TO OUR INTEREST.

2

1