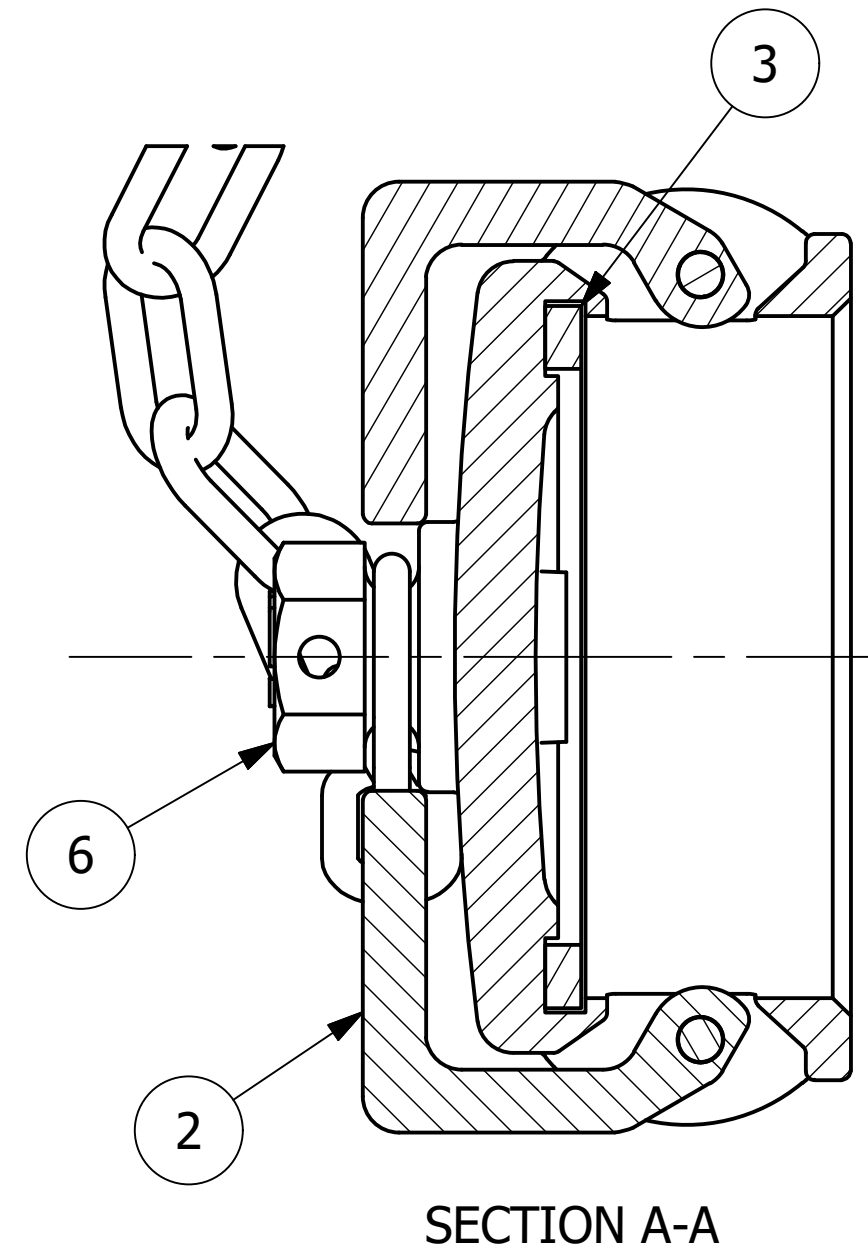
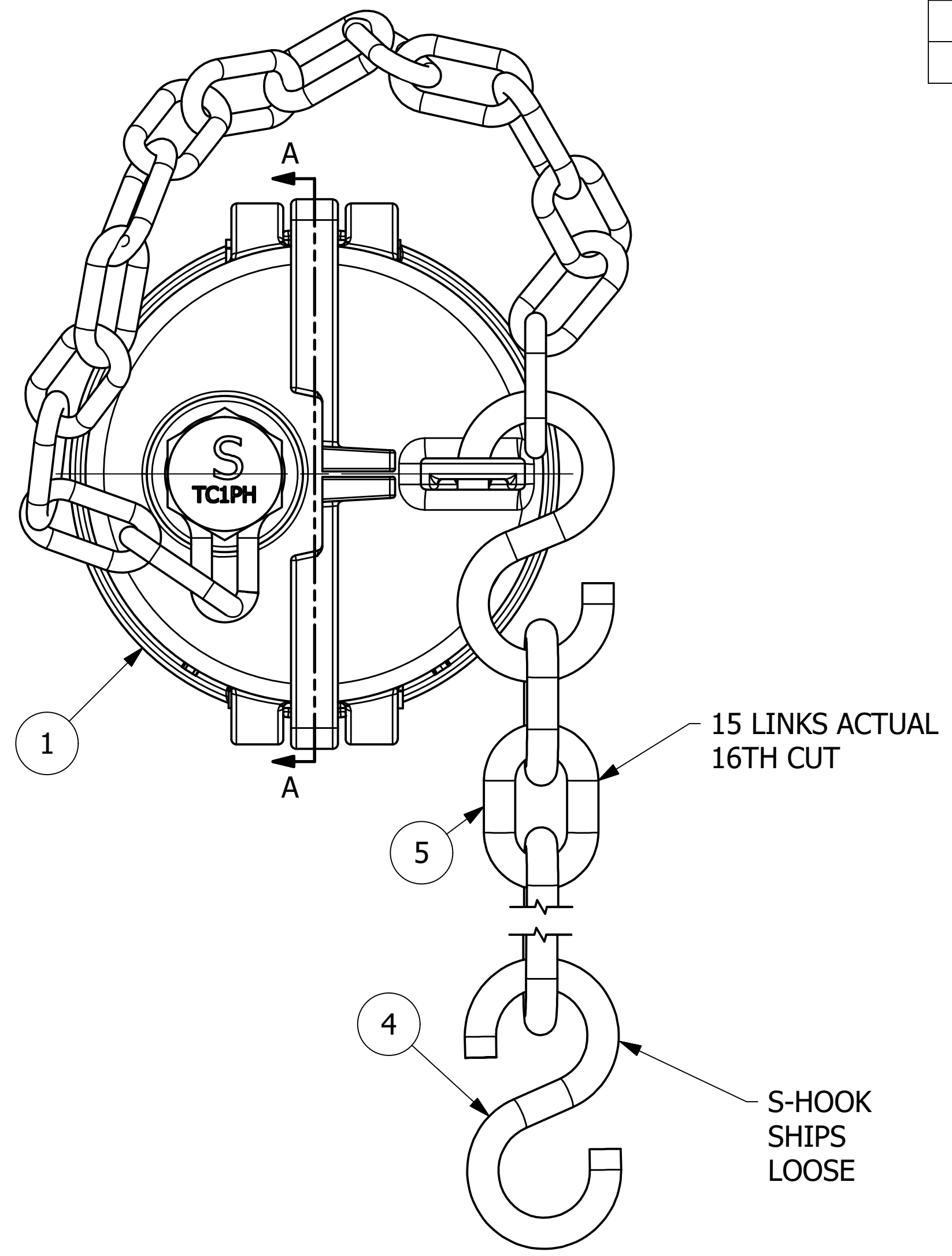


| NO. | PART NAME | PART # | REQ'D | MATERIAL |
|-----|-----------------------------|---------|-------|-------------------|
| 1 | QUICK CONNECT CAP 4" CAMMED | K4IDC | 1 | DUCTILE IRON |
| 2 | CAM ARMS CROSSOVER | KLA4 | 1 | BRONZE |
| 3 | DUST CAP GASKET 4" | PD4DCGW | 1 | FDA WHITE NITRILE |
| 4 | S-HOOK 3/8"X3 1/2" | SC38SH | 2 | CS Z/P |
| 5 | CHAIN LINKS 3/8"X15 | SC4315C | 1 | AISI 1008 CS |
| 6 | PLUG ASSEMBLY 1" | TC1PAH | 1 | CARBON STEEL |



- NOTES:
1. THIS ASSEMBLY IS NOT DOT APPROVED AND CAN BE USED ONLY ON AAR STENCILED CARS.
 2. QUICK DISCONNECT MEETS A-A-59326D.
 3. DUST CAP IS DUCTILE IRON (FERRITIZED/ANNEALED) AND MEETS ASTM A295 GRADE 60-40-18 REQUIREMENTS.
 4. SPRAY WITH USDA APPROVED WHITE MINERAL OIL OR VEGETABLE OIL AS A RUST INHIBITOR.
 5. AAR APPROVAL # E-139514.

| REV | BY | DATE | DESCRIPTION |
|-----|-----|----------|---|
| H | WEB | 4/19/22 | REPLACED 16X SC43 W/ SC4315C; UPDATED TITLE BLOCK |
| G | RJP | 10/29/13 | AAR APPROVAL # WAS E-019022 MIL SPEC WAS MIL-C-27487G |
| F | TAJ | 6/22/11 | AAR APPROVAL # WAS E-039015 |
| E | BRG | 2/8/08 | CHANGED PLUG MATERIAL |
| D | CHL | 12/30/03 | AAR APPROVAL# WAS E-939034 |
| C | FOD | 3/6/00 | CHANGED PART # WAS K4ICDCA & UPDATED DRAWING WITH NEW STANDARDS |
| B | ACC | 1/15/99 | CHAIN MATERIAL WAS CS/P |
| A | ACC | 9/25/97 | CHANGED CHAIN REQUIREMENTS |

| | | |
|---|-----------------------------|-----------|
| UNLESS OTHERWISE SPECIFIED DIMENSIONAL TOLERANCES FRACTIONAL: $\pm 1/16$ X.XX: $\pm .03$ X.XXX: $\pm .015$ ANGLE: $\pm 1^\circ$ DEBURR ALL SHARP EDGES. ALL MACHINED SURFACES TO HAVE A 125 RMS FINISH UNLESS NOTED OTHERWISE. THIRD ANGLE PROJECTION | DRAWN BY: | ACC |
| | CHECKED BY: | |
| | PROTOTYPE DATE: | 8/4/2020 |
| | APPROVED FOR PRODUCTION BY: | ACC |
| | PRODUCTION DATE: | 10/1/1996 |
| | SIZE: | C |
| DRAWING #: | 8376 | |

SALCO PRODUCTS, INC.

PART NAME: **QUICK CONNECT CAP ASSEMBLY 4"**

MATERIAL: **SEE BOM**

PROJECT #: _____ SHEET #: **1 OF 1** SCALE: **3:4**

PART #: **K4ICDC2A**