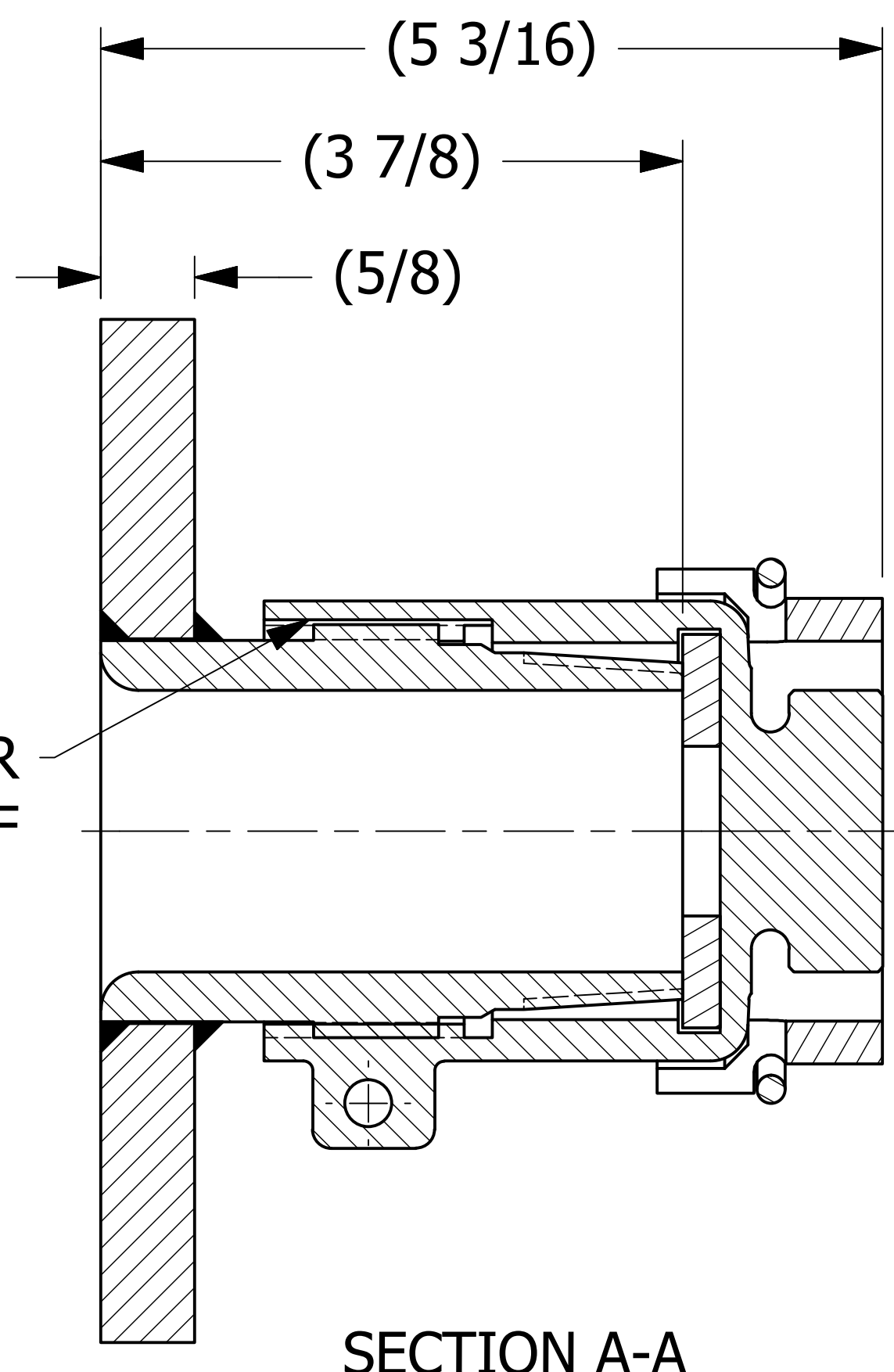
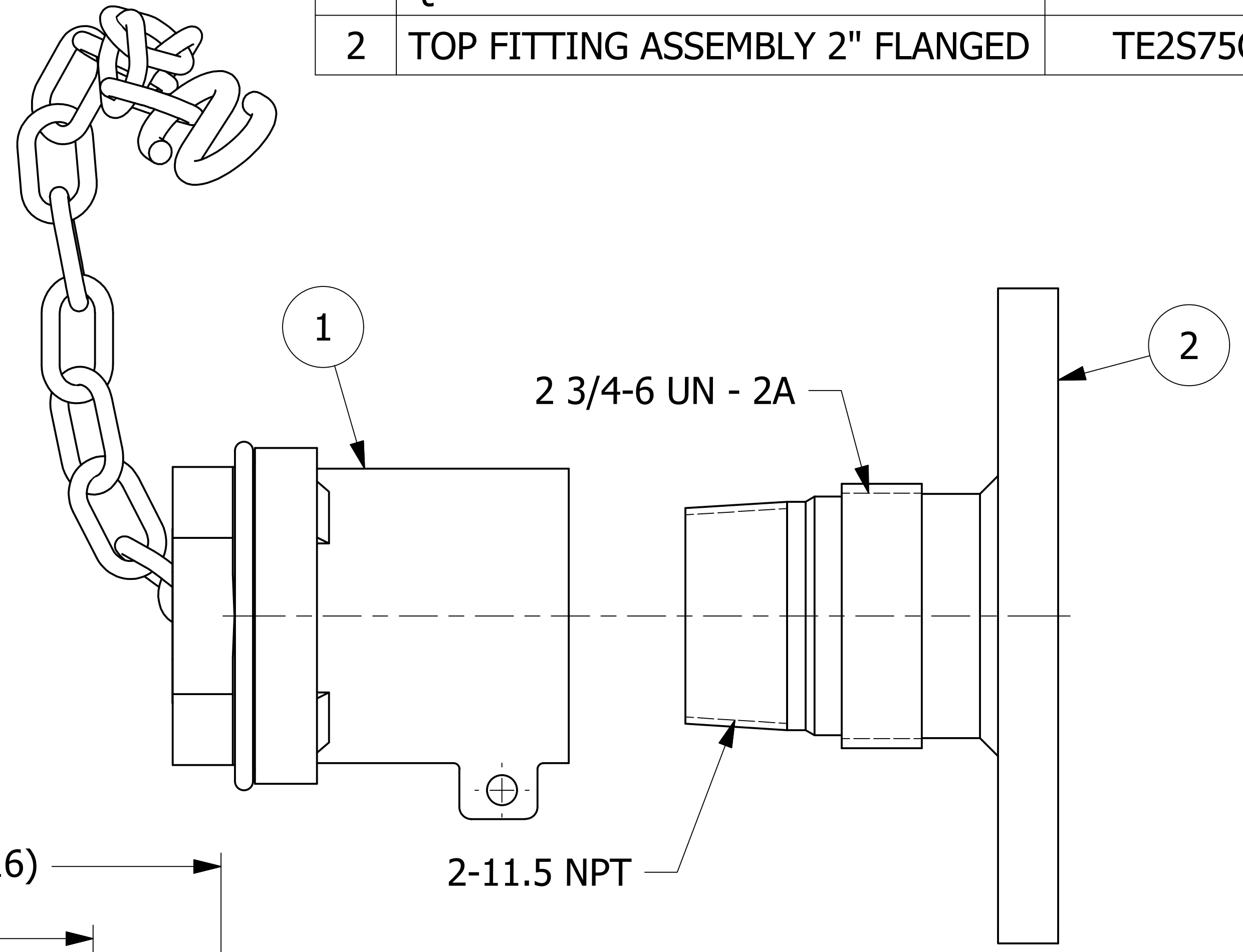
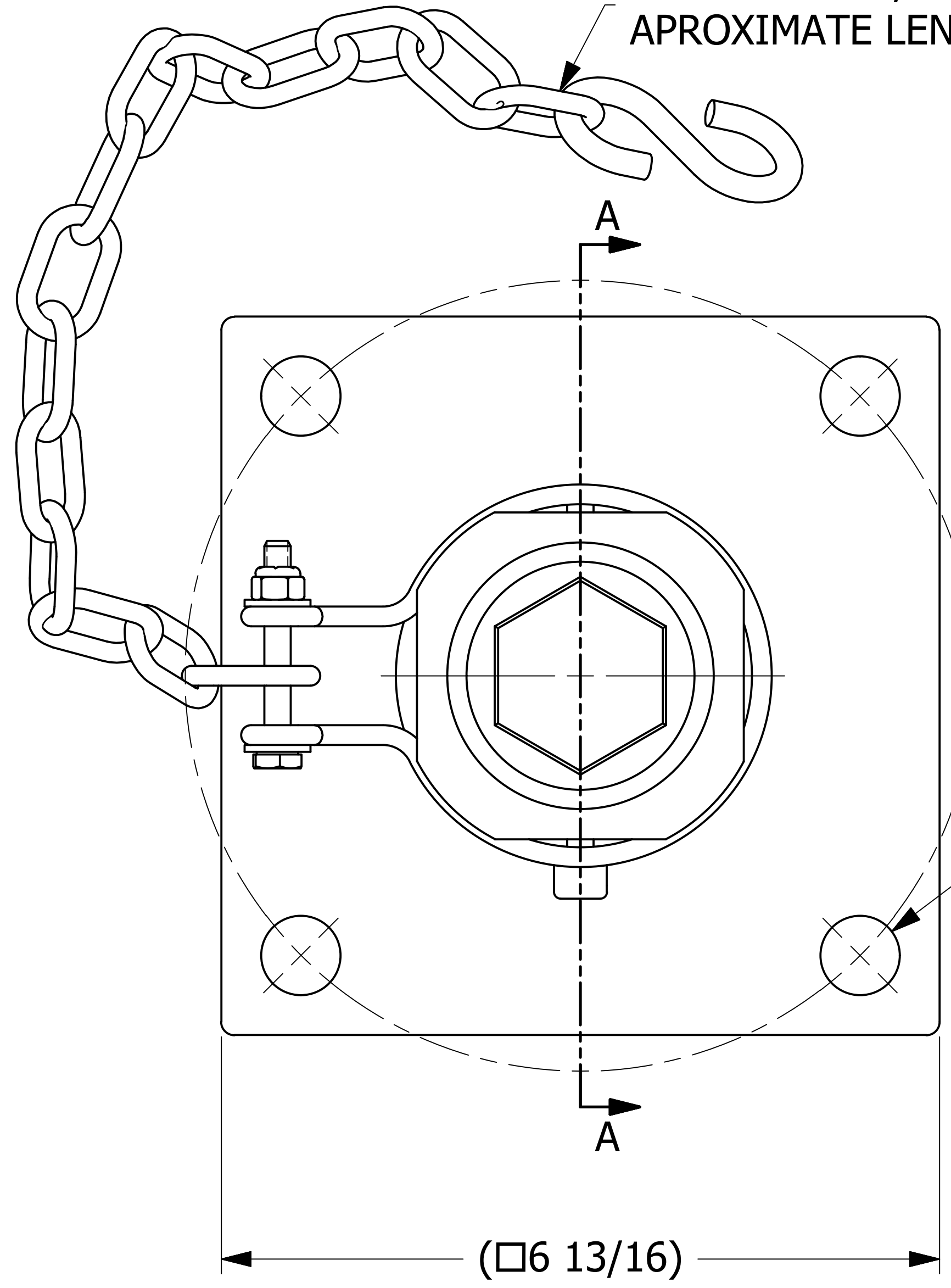


NO	PART NAME	PART #	REQ'D	MATERIAL
1	QUICK CONNECT CAP 2" THREAD ON	TE20SDLPDC07A	1	316L SS
2	TOP FITTING ASSEMBLY 2" FLANGED	TE2S75QF	1	316L SS

14 LINKS OF 3/16" 18-8 SS CHAIN
APROXIMATE LENGTH IS 14"



SLOT CUT IN THREADS FOR
SAFETY PRESSURE RELIEF

SECTION A-A

NOTE:
GASKET MATERIAL IS BLACK VITON B.

B	CHL	1/28/21	UPDATED VIEW OF TE20SDLPDC07A
A	RJP	6/26/17	UPDATED GEOMETRY OF TE2S75QF
REV	BY	DATE	DESCRIPTION

UNLESS OTHERWISE SPECIFIED DIMENSIONAL TOLERANCES	DRAWN BY:	GS
FRACTIONAL: $\pm 1/16$	CHECKED BY:	CHL
X.XX: $\pm .03$	PROTOTYPE DATE:	5/7/2012
X.XXX: $\pm .015$	APPROVED FOR PRODUCTION BY:	CHL
ANGULAR: $\pm 1^\circ$	PRODUCTION DATE:	5/31/2012
DEBURR ALL SHARP EDGES. ALL MACHINED SURFACES TO HAVE A 125 RMS FINISH UNLESS NOTED OTHERWISE.	SIZE:	D
THIRD ANGLE PROJECTION	DRAWING #:	33154

SALCO PRODUCTS, INC.

PART NAME:
TOP FITTING ASSEMBLY 2" FLANGED

MATERIAL:
SEE BOM/NOTE

PROJECT #:
120505

SHEET #:
1 OF 1

SCALE:
1 : 1

PART #:
TE20S75QDLPF07A