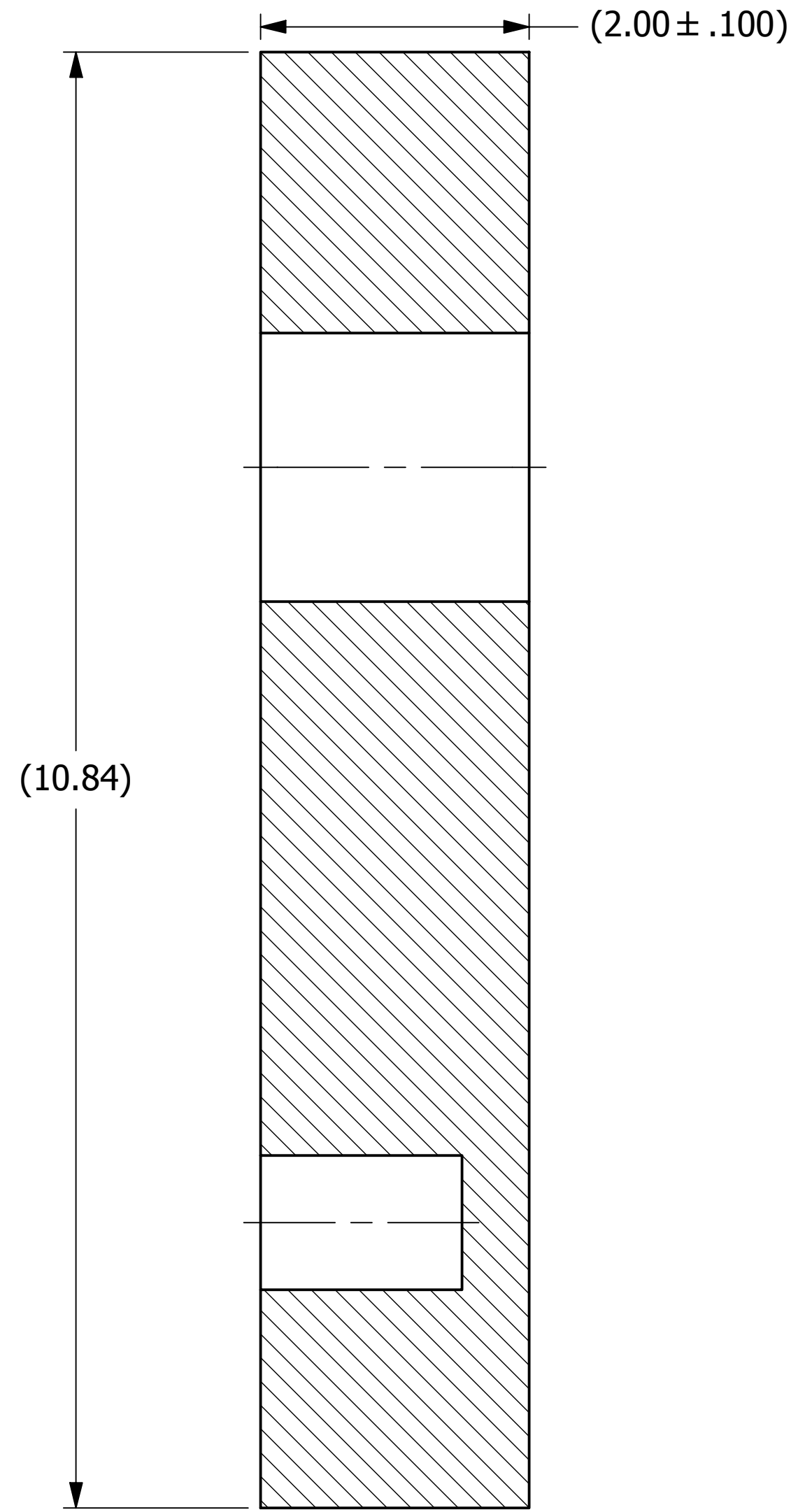
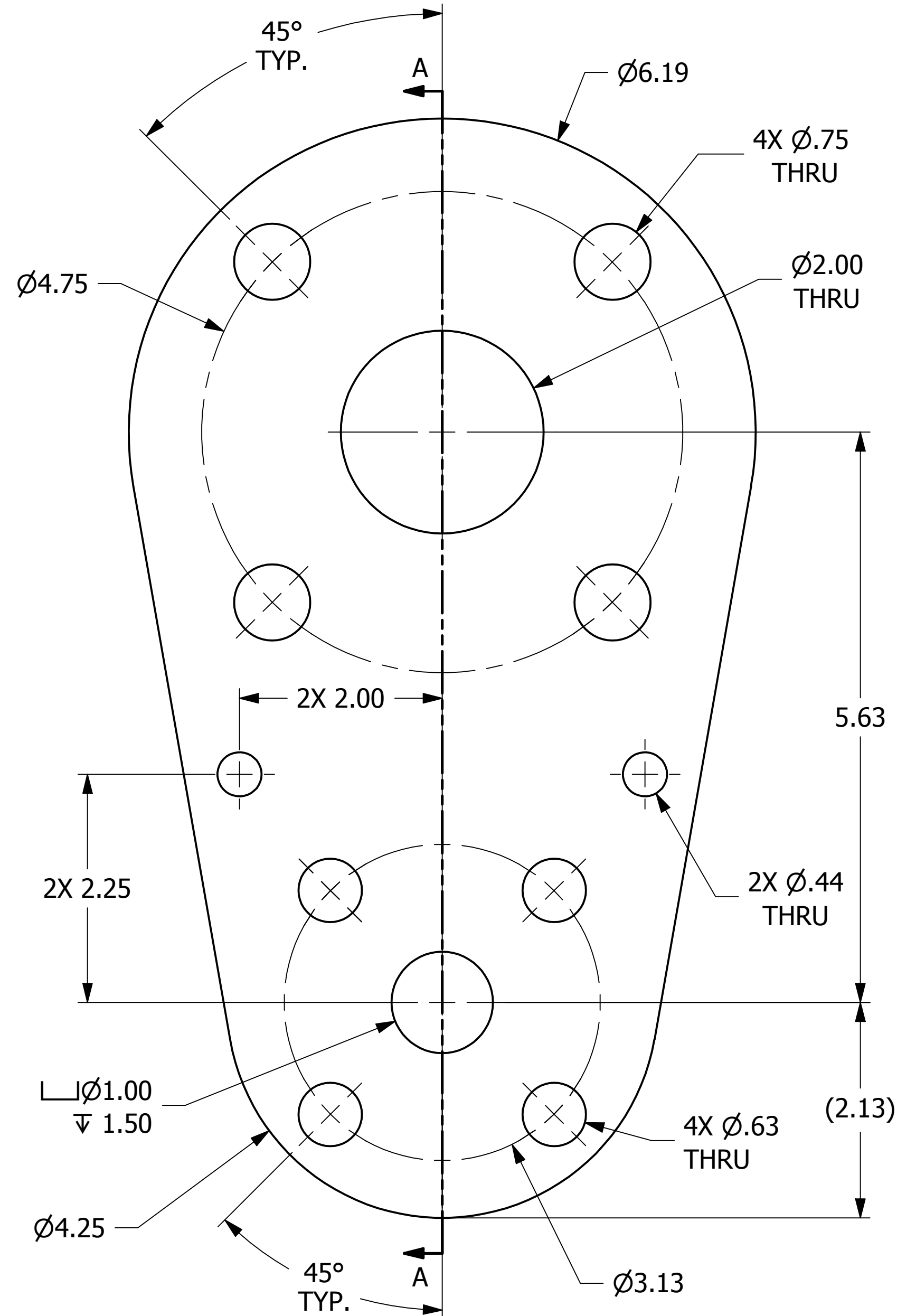


NO.	PART NAME	PART #	REQ'D	MATERIAL
1	SHEET 2"	SHT2UHR	.50 SQ FT	SALCO PE



SECTION A-A

NOTES:
 1. SEE DOCUMENT DSS 1 FOR MATERIAL SPECIFICATIONS.
 2. MTR REQUIRED.

REV	TAK	DATE	DESCRIPTION
A	TAK	4-22-14	RELEASED FOR PRODUCTION

UNLESS OTHERWISE SPECIFIED DIMENSIONAL TOLERANCES FRACTIONAL: $\pm 1/16$ X.XX: $\pm .03$ X.XXX: $\pm .015$ ANGLE: $\pm 1^\circ$ DEBURR ALL SHARP EDGES. ALL MACHINED SURFACES TO HAVE A 125 RMS FINISH UNLESS NOTED OTHERWISE.	DRAWN BY: TAK	CHECKED BY: CHL	PROTOTYPE BY: TAK	PROTOTYPE DATE: 3/31/2014	APPROVED FOR PRODUCTION BY: TAK	PRODUCTION DATE: 4/22/2014
---	---------------	-----------------	-------------------	---------------------------	---------------------------------	----------------------------

SALCO PRODUCTS, INC.

PART NAME: **PARALLEL INSTRUMENT TEE BLANK 2"X1"**

MATERIAL: **SEE BOM/NOTE**

PROJECT #: **140312T** SHEET #: **1 OF 1** SCALE: **1:1**

DRAWING #: **C38725** PART #: **HSPIT2X1B**