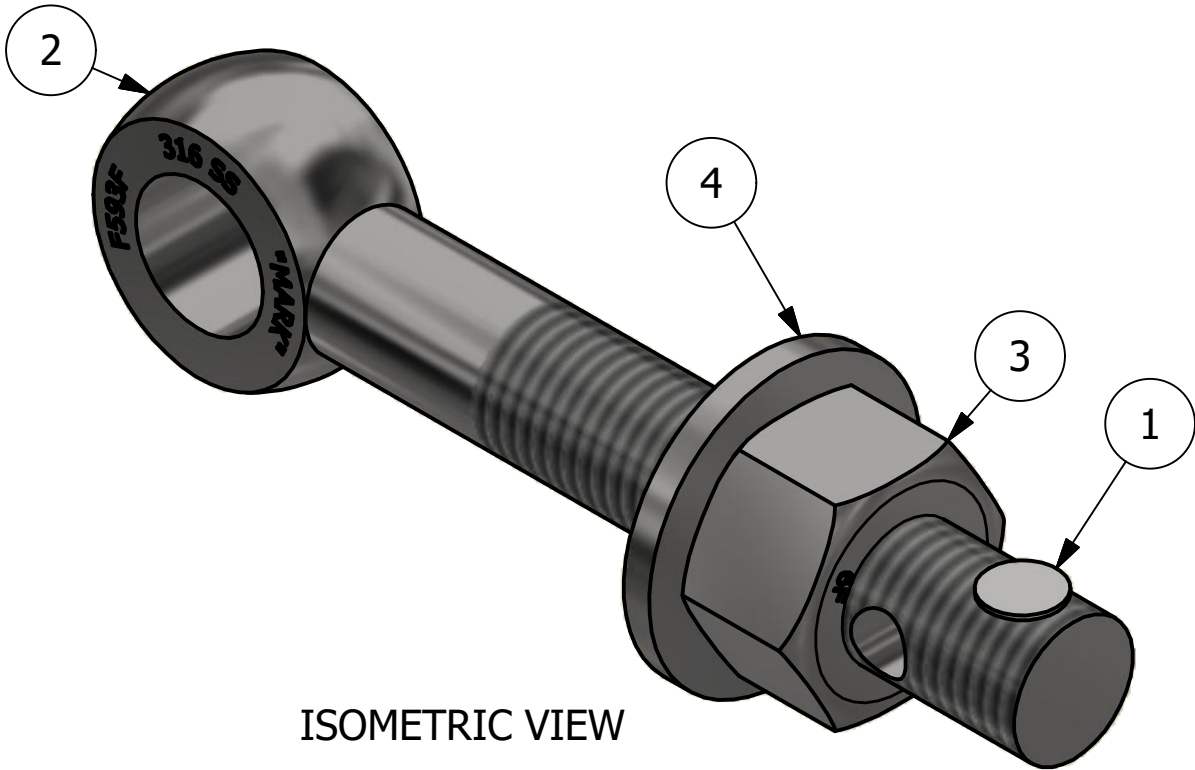
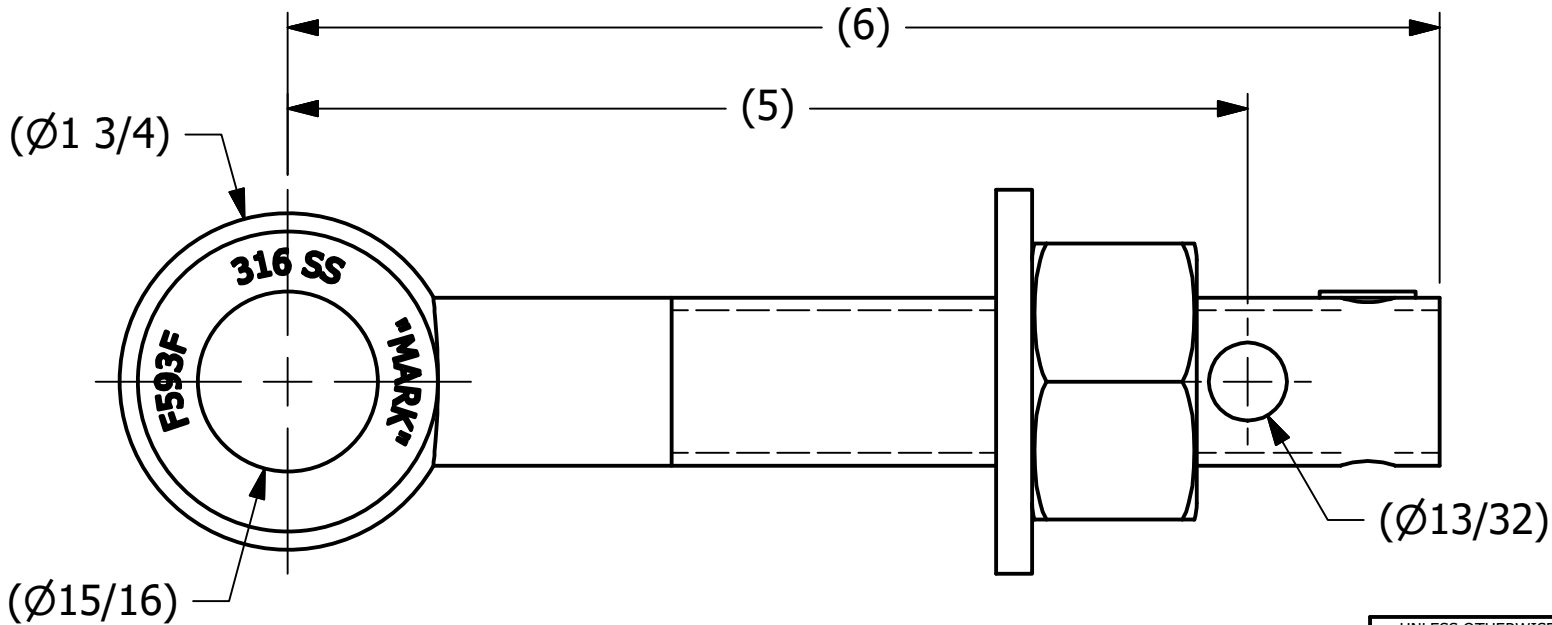
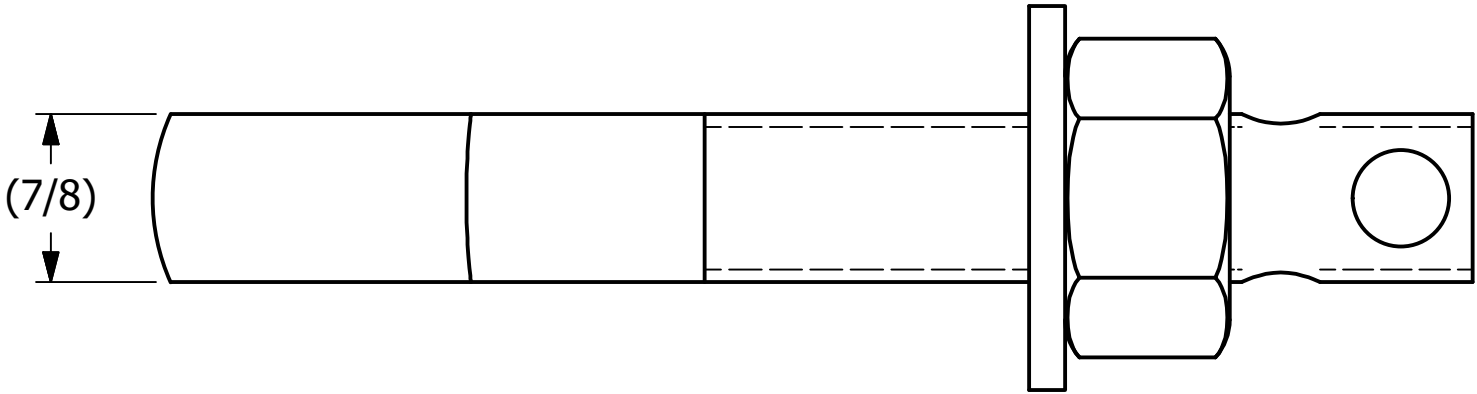



NO.	PART NAME	PART #	1	
			REQ'D	MATERIAL
1	HUCK RIVET 1/4"X13/16"	A16204	1	304 SS
2	EYEBOLT 7/8"X6"	EBR786H9S6R	1	316 SS
3	HEAVY HEX NUT 7/8"-9	N78XS6	1	416 SS
4	FLAT WASHER 7/8" SAE	WASH78S6	1	316 SS



ISOMETRIC VIEW

A	TAK	12-15-14	RELEASED FOR PRODUCTION	
REV	BY	DATE	DESCRIPTION	
<div>SALCO PRODUCTS, INC.</div>				
PART NAME: EYEBOLT ASSEMBLY 7/8"X6"				
MATERIAL: SEE BOM				
PROJECT #:		SHEET #:		SCALE:
H140909		1 OF 1		1:1
DRAWING #:		PART #:		
B40466		EB786XH5AS6		

UNLESS OTHERWISE SPECIFIED DIMENSIONAL TOLERANCES FRACTIONAL: $\pm 1/16$ X.XX: $\pm .03$ X.XXX: $\pm .015$ ANGULAR: $\pm 1^\circ$ DEBURR ALL SHARP EDGES. ALL MACHINED SURFACES TO HAVE A 125 RMS FINISH UNLESS NOTED OTHERWISE. THIRD ANGLE PROJECTION	DRAWN BY:	TAK
	CHECKED BY:	JRO
	PROTOTYPE BY:	TAK
	PROTOTYPE DATE:	12/15/2014
	APPROVED FOR PRODUCTION BY:	TAK
	PRODUCTION DATE:	12/15/2014

THIS PRINT, PROPERTY OF SALCO PRODUCTS INC., CONTAINS PROPRIETARY INFORMATION AND MUST NOT BE COPIED, REPRODUCED, OR USED DETRIMENTALLY TO OUR INTEREST.