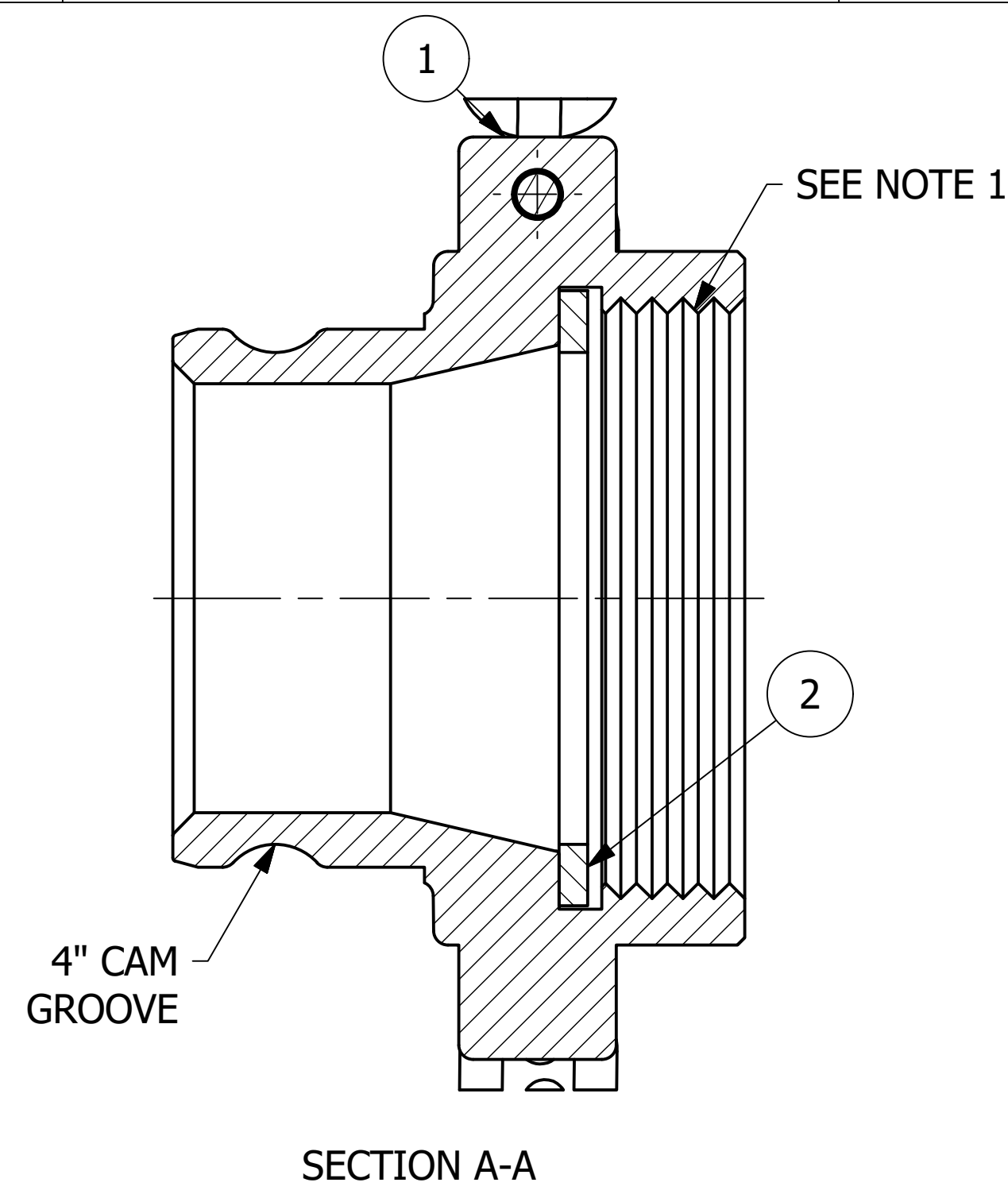
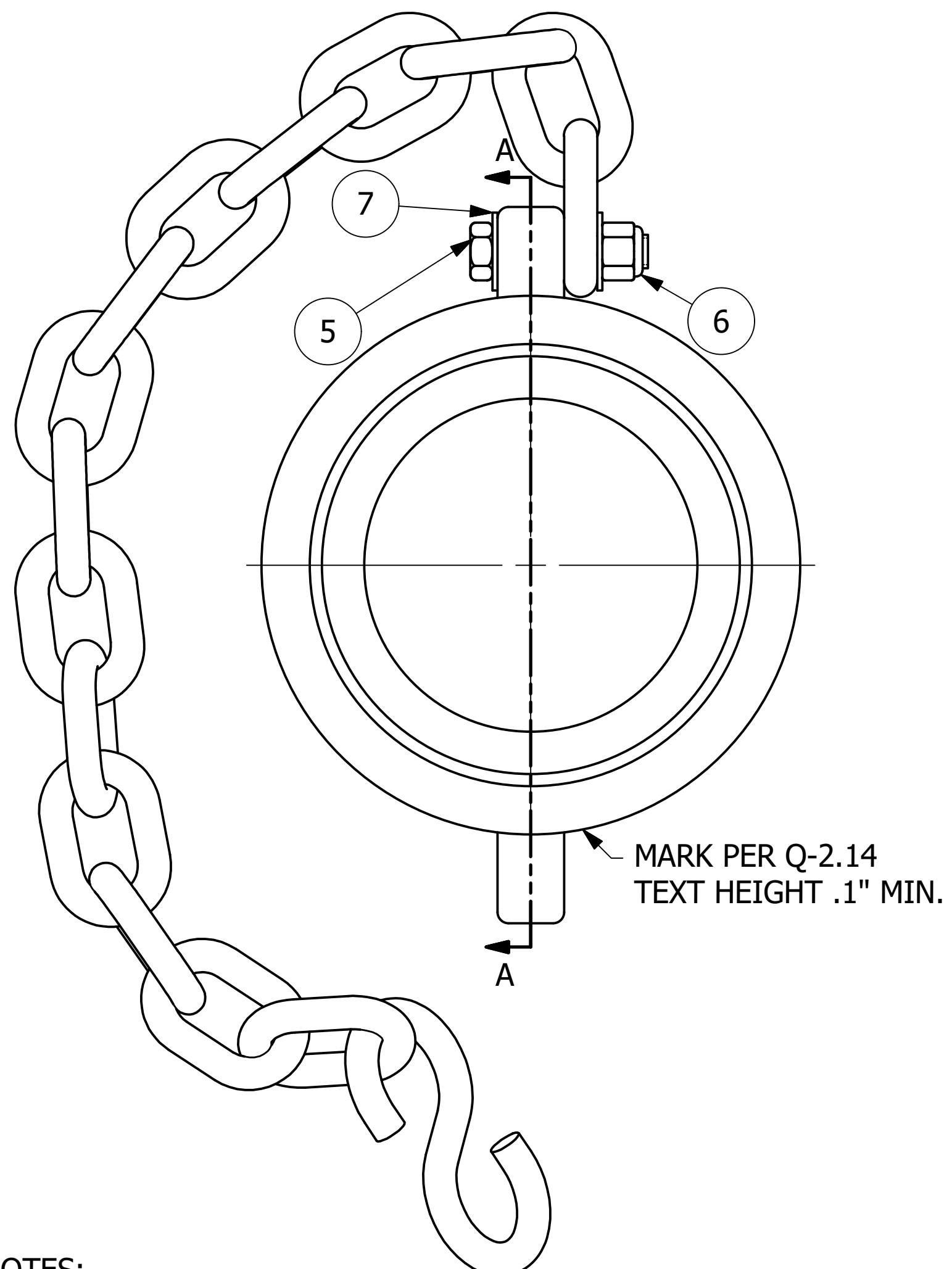


NO.	PART NAME	PART#	REQ'D	MATERIAL
1	QUICK CONNECT ADAPTER 4" THREAD ON	K4SA	1	316 SS
2	ADAPTER GASKET 5 1/4" RR	SSA4G	1	BLACK NITRILE
5	HEX BOLT 3/8"-16 X 1 3/4"	EA111BS	1	18-8 SS
6	HEX LOCK NUT 3/8"-16	RP103MN	1	18-8 SS
7	FLAT WASHER 3/8"	RP103MW	2	18-8 SS
10	CHAIN LINK 3/8"	SC80	16	18-8 SS
26	S-HOOK 3/8"X3 1/2"	SC38SHS	1	18-8 SS



- NOTES:**
- 5-1/4"-4 UN 2B THREADS CONFORM TO ANSI B1.1 STANDARD AND FIGURE E18 FROM AAR TANK CAR MANUAL.
  - THIS ASSEMBLY IS NOT DOT APPROVED AND CAN BE USED ONLY ON AAR STENCILED CARS.
  - QUICK DISCONNECT MEETS A-A-59326D.
  - ADAPTER IS ASTM A351 OR A743 GRADE CF8M 316 SS
  - AAR APPROVAL # E-139514.
  - SEE DOCUMENT Q-2.14 FOR MARKING PROCEDURE.

REV	BY	DATE	DESCRIPTION
F	BP	12/9/21	UPDATED TO NEW STANDARDS; UPDATED ADAPTER MATERIAL
E	RJP	11/1/13	AAR APPROVAL # WAS E-039015 MIL SPEC WAS MIL-C-27487G
D	CHL	1/6/04	AAR APPROVAL # WAS E-939034
C	FOD	3/6/00	ITEM 7 WAS TSW916, PART# WAS K4SAA, UPDATED TO NEW STANDARDS
B	MRC	11/7/97	TSW916 WAS RP103MW
A	MRC	9/4/97	S-HOOK WAS 5/16" & CHAIN WAS Ø9/32"

<small>UNLESS OTHERWISE SPECIFIED DIMENSIONAL TOLERANCES FRACTIONAL: ±1/16 X.XX: ±.03 X.XXX: ±.015 ANGLE: ±1° DEBURR ALL SHARP EDGES. ALL MACHINED SURFACES TO HAVE A 125 RMS FINISH UNLESS NOTED OTHERWISE</small> <small>THIRD ANGLE PROJECTION</small>	DRAWN BY:	BJC
	CHECKED BY:	ACC
	PROTOTYPE DATE:	11/8/1994
	APPROVED FOR PRODUCTION BY:	ACC
	PRODUCTION DATE:	11/8/1994
	SIZE:	C
DRAWING #:	7191	

**SALCO PRODUCTS, INC.**

PART NAME: **QUICK CONNECT ADAPTER 4" THREAD ON**

MATERIAL: **SEE BOM**

PROJECT #: \_\_\_\_\_ SHEET #: **1 OF 1** SCALE: **3:4**

PART #: **K4SA1A**