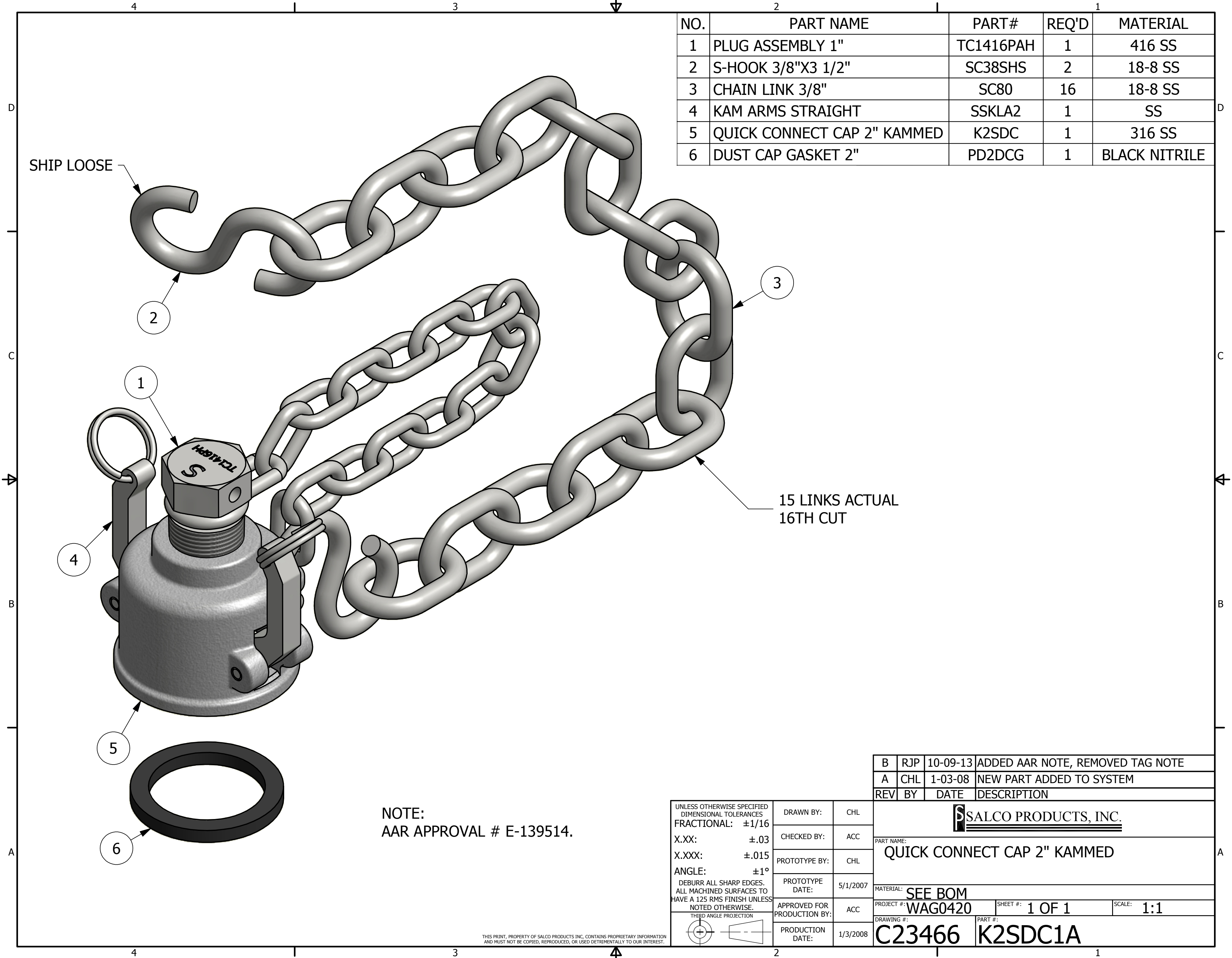


NO.	PART NAME	PART #	REQ'D	MATERIAL
1	PLUG ASSEMBLY 1"	TC1416PAH	1	416 SS
2	S-HOOK 3/8"X3 1/2"	SC38SHS	2	18-8 SS
3	CHAIN LINK 3/8"	SC80	16	18-8 SS
4	KAM ARMS STRAIGHT	SSKLA2	1	SS
5	QUICK CONNECT CAP 2" KAMMED	K2SDC	1	316 SS
6	DUST CAP GASKET 2"	PD2DCG	1	BLACK NITRILE



REV	BY	DATE	DESCRIPTION
B	RJP	10-09-13	ADDED AAR NOTE, REMOVED TAG NOTE
A	CHL	1-03-08	NEW PART ADDED TO SYSTEM

UNLESS OTHERWISE SPECIFIED DIMENSIONAL TOLERANCES FRACTIONAL: $\pm 1/16$ X.XX: $\pm .03$ X.XXX: $\pm .015$ ANGLE: $\pm 1^\circ$ DEBURR ALL SHARP EDGES. ALL MACHINED SURFACES TO HAVE A 125 RMS FINISH UNLESS NOTED OTHERWISE. THIRD ANGLE PROJECTION	DRAWN BY:	CHL
	CHECKED BY:	ACC
	PROTOTYPE BY:	CHL
	PROTOTYPE DATE:	5/1/2007
	APPROVED FOR PRODUCTION BY:	ACC
	PRODUCTION DATE:	1/3/2008

SALCO PRODUCTS, INC.		
PART NAME: QUICK CONNECT CAP 2" KAMMED		
MATERIAL: SEE BOM		
PROJECT #:	WAG0420	SHEET #: 1 OF 1
DRAWING #:	C23466	SCALE: 1:1
PART #:	K2SDC1A	