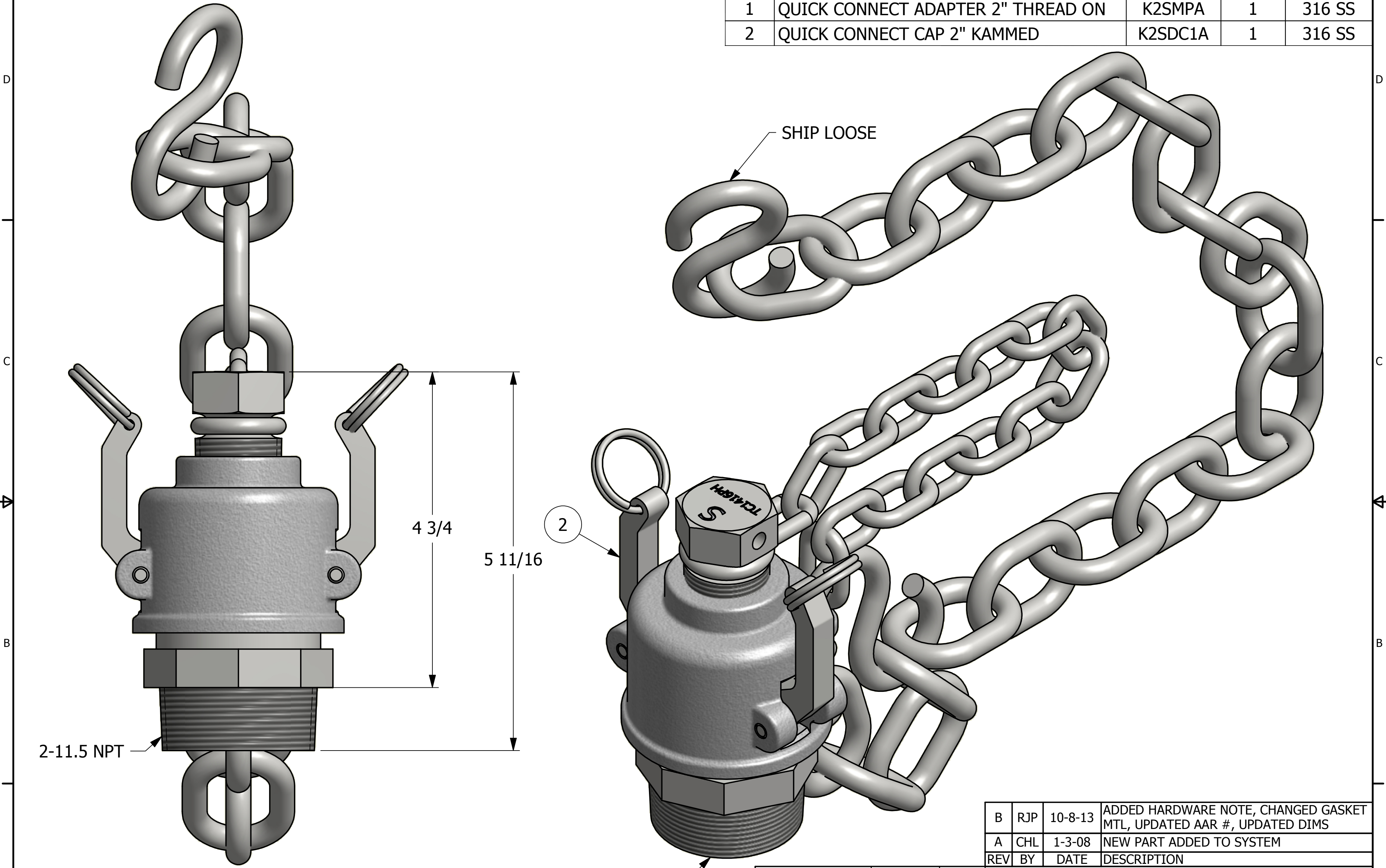



NO.	PART NAME	PART #	REQ'D	MATERIAL
1	QUICK CONNECT ADAPTER 2" THREAD ON	K2SMPA	1	316 SS
2	QUICK CONNECT CAP 2" KAMMED	K2SDC1A	1	316 SS



- NOTES:
- 1. HARDWARE IS SS.
 - 2. GASKET IS BLACK NITRILE.
 - 3. AAR APPROVAL # E-139514.

B	RJP	10-8-13	ADDED HARDWARE NOTE, CHANGED GASKET MTL, UPDATED AAR #, UPDATED DIMS
A	CHL	1-3-08	NEW PART ADDED TO SYSTEM
REV	BY	DATE	DESCRIPTION

UNLESS OTHERWISE SPECIFIED DIMENSIONAL TOLERANCES	DRAWN BY:	CHL
FRACTIONAL: $\pm 1/16$	CHECKED BY:	ACC
X.XX: $\pm .03$	PROTOTYPE BY:	CHL
X.XXX: $\pm .015$	PROTOTYPE DATE:	5/1/2007
ANGLE: $\pm 1^\circ$	APPROVED FOR PRODUCTION BY:	ACC
THIS PRINT, PROPERTY OF SALCO PRODUCTS INC, CONTAINS PROPRIETARY INFORMATION AND MUST NOT BE COPIED, REPRODUCED, OR USED DETRIMENTALLY TO OUR INTEREST.	PRODUCTION DATE:	1/3/2008
THIRD ANGLE PROJECTION		

 SALCO PRODUCTS, INC.		
PART NAME: QUICK CONNECT 2" THREAD ON		
MATERIAL: SEE BOM		
PROJECT #: WAG0420	SHEET #: 1 OF 1	SCALE: 1:1
DRAWING #: C23470	PART #: K2SUMP1A	