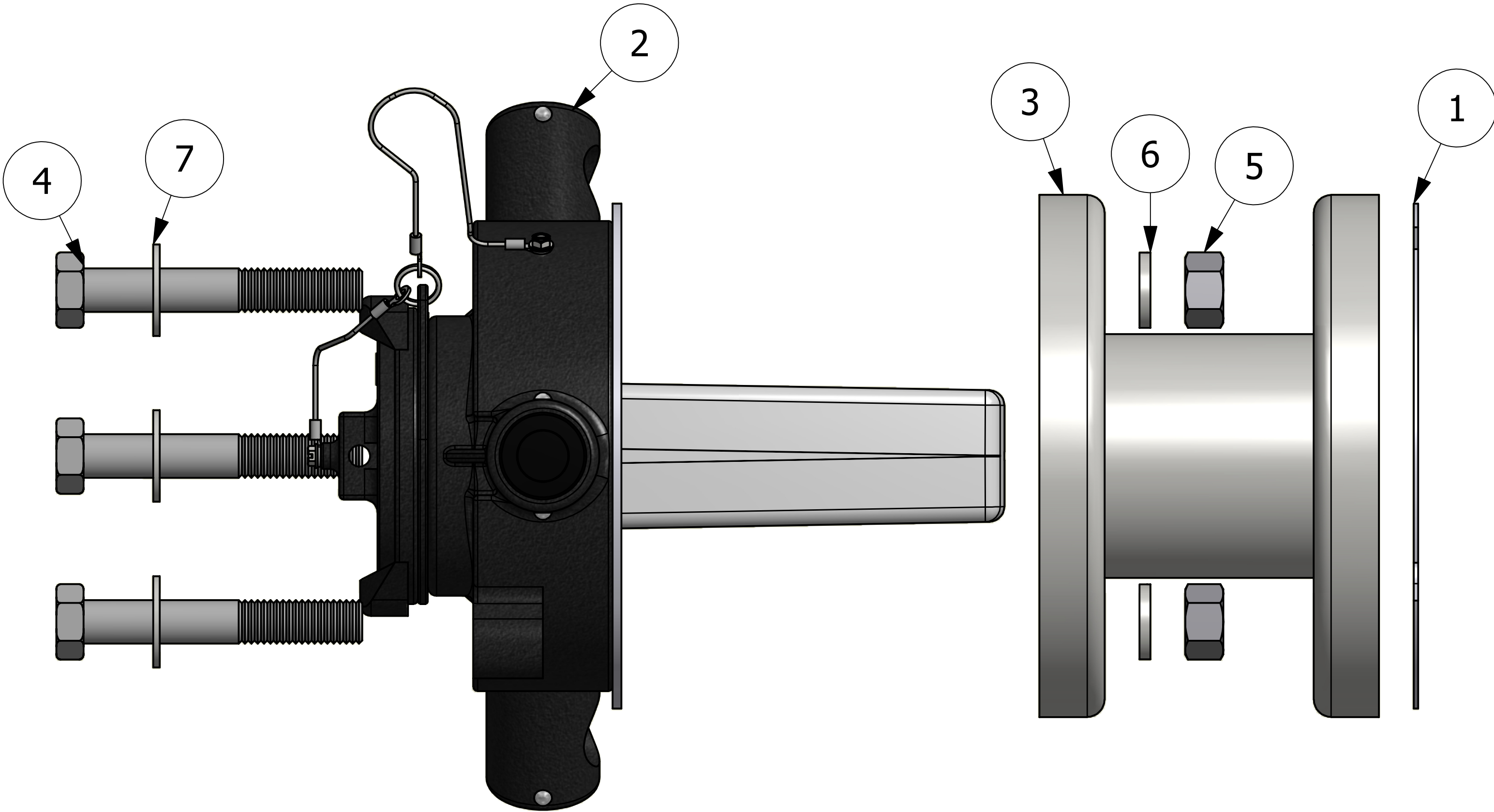

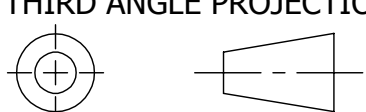


- NOTES:
1. MOUNTING FLANGE TO AAR SPECIFICATION E11B.
 2. SURGE PROTECTOR MATERIAL = WHITE NORYL
 3. CUSTOMER RESPOSIBILITY FOR COMAPTIBILITY OF COMMODITY.
 4. RUPTURE DISC PRESSURE INDICATED BY CUSTOMER.
 5. AAR APPROVAL #PRD-162102.

NO	PART NAME	PART#	REQ'D	MATERIAL
1	QI ADAPTER FLANGE GASKET	FG7N	1	FDA WHITE NITRILE
2	QUICK INSPECT SAFETY VENT	QI26102A	1	NORYL
3	QUICK INSPECT ADAPTER FLANGE	QI625F	1	316 SS
4	HEX BOLT 5/8"-11X4"	SV584FBS	3	18-8 SS
5	HEX NUT 5/8"-11	SV58N	3	CS Z/P
6	SPLIT LOCK WASHER 5/8"	SV58SLW	3	18-8 SS
7	FLAT WASHER 5/8" SAE	SV58WS	3	18-8 SS



I	JG	5-23-17	AAR APPROVAL # WAS SRD-063000; UPDATED NOTES, VIEWS
H	CHL	12-7-09	REPLACED QI261A & FG550N W/QI26102A
G	WRB	12/28/06	ADDED AAR APPROVAL NOTE
F	MRC	9/15/00	DRAWING WAS A CHART
REV	BY	DATE	DESCRIPTION

UNLESS OTHERWISE SPECIFIED DIMENSIONAL TOLERANCES FRACTIONAL: ±1/16 X.XX: ±.03 X.XXX: ±.015 ANGULAR: ±1° DEBURR ALL SHARP EDGES. ALL MACHINED SURFACES TO HAVE A 125 RMS FINISH UNLESS NOTED OTHERWISE. THIRD ANGLE PROJECTION	DRAWN BY:	JJK	 SALCO PRODUCTS, INC.	
	CHECKED BY:			
	PROTOTYPE BY:	JJK	PART NAME: QUICK INSPECT SAFETY VENT W/FLANGE	
	PROTOTYPE DATE:	2/10/1998	MATERIAL: SEE BOM	
	APPROVED FOR PRODUCTION BY:	CLH	PROJECT #:	131208FR
	PRODUCTION DATE:	2/10/1998	SHEET #:	1 OF 1
			DRAWING #:	D8893
			PART #:	QIF625A
			SCALE:	3:4