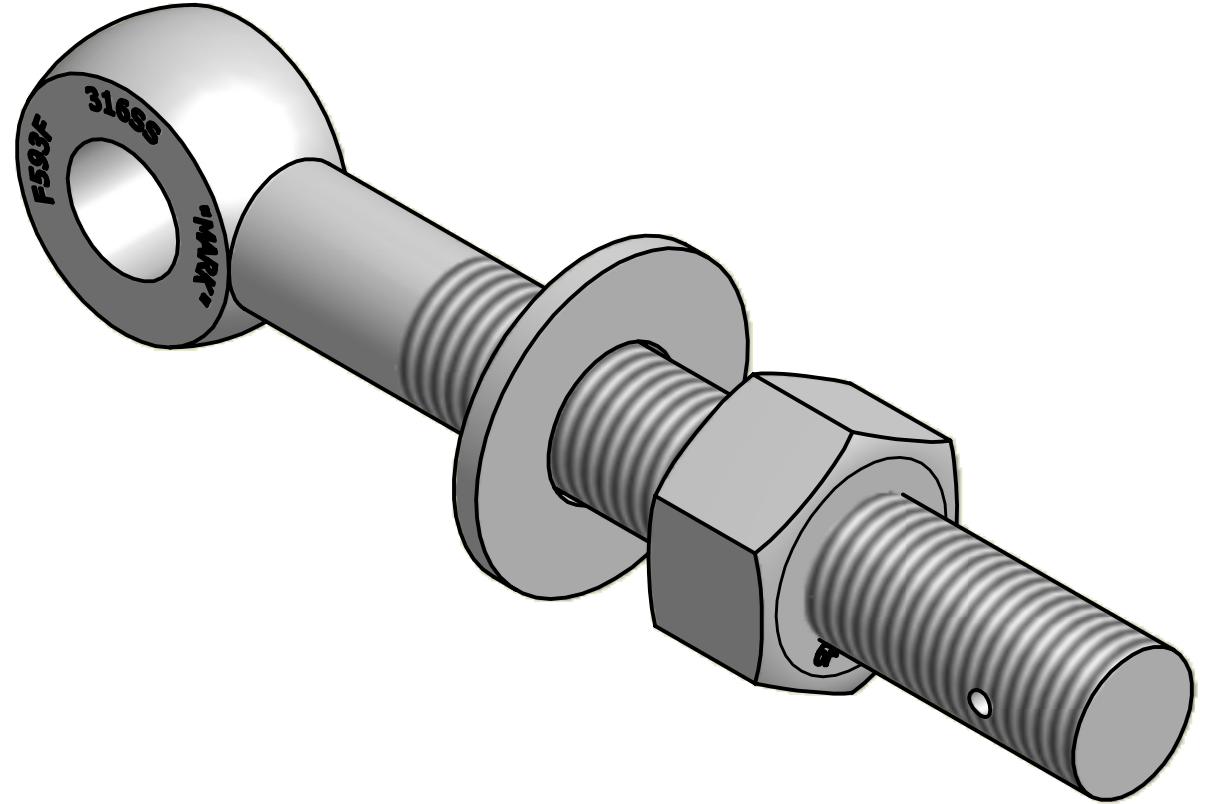
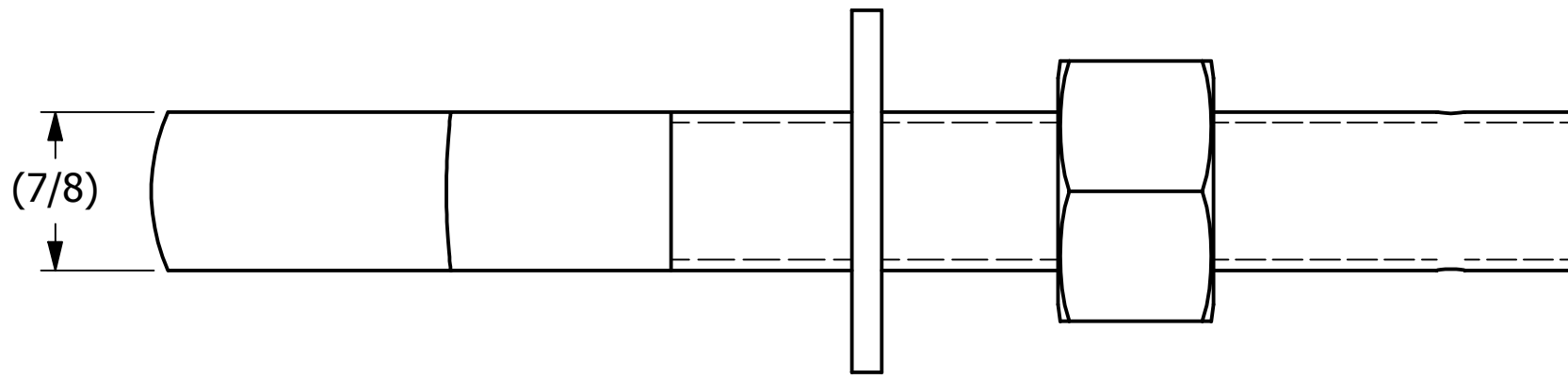
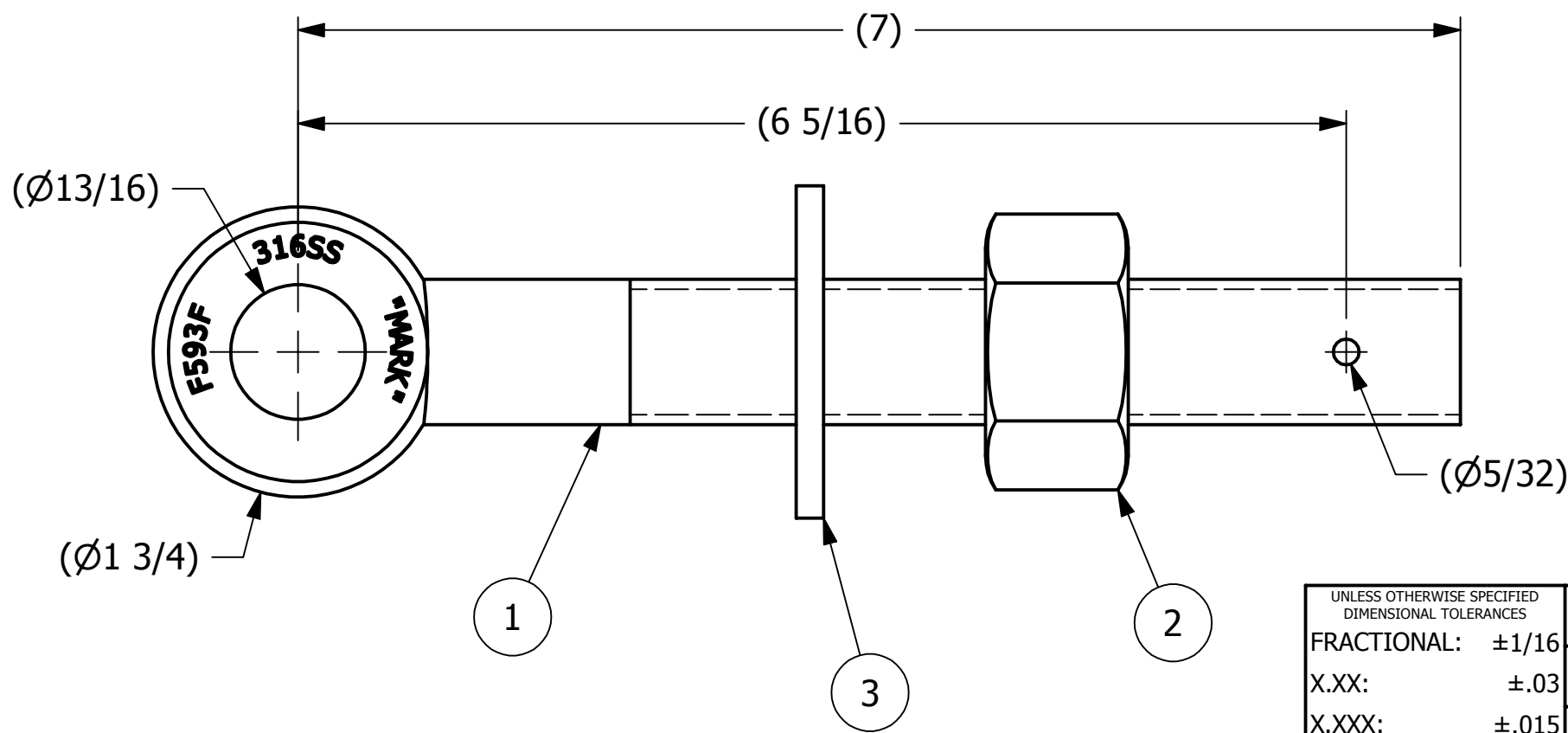


NO.	PART NAME	PART#	REQ'D	MATERIAL
1	EYEBOLT 7/8"X7"	EBR787HS6	1	316 SS
2	HEAVY HEX NUT 7/8"-9	N78XS6	1	416 SS
3	FLAT WASHER 7/8" SAE	WASH78S6	1	316 SS



ISOMETRIC VIEW



A	CHL	10-16-03	ADDED NEW PART TO SYSTEM
REV	BY	DATE	DESCRIPTION

<small>UNLESS OTHERWISE SPECIFIED DIMENSIONAL TOLERANCES</small> FRACTIONAL: ±1/16 X.XX: ±.03 X.XXX: ±.015 ANGULAR: ±1° <small>DEBURR ALL SHARP EDGES. ALL MACHINED SURFACES TO HAVE A 125 RMS FINISH UNLESS NOTED OTHERWISE.</small>	DRAWN BY:	CHL
	CHECKED BY:	ACC
	PROTOTYPE BY:	CHL
	PROTOTYPE DATE:	7/29/2003
	APPROVED FOR PRODUCTION BY:	ACC
THIRD ANGLE PROJECTION	PRODUCTION DATE:	10/16/2003

SALCO PRODUCTS, INC.

PART NAME: **EYEBOLT ASSEMBLY 7/8"X7"**

MATERIAL: **SEE BOM**

PROJECT #: **WAG0046** SHEET #: **1 OF 1** SCALE: **1:1**

DRAWING #: **B18269** PART #: **EB787XH2AS6**

THIS PRINT, PROPERTY OF SALCO PRODUCTS INC., CONTAINS PROPRIETARY INFORMATION AND MUST NOT BE COPIED, REPRODUCED, OR USED DETRIMENTALLY TO OUR INTEREST.