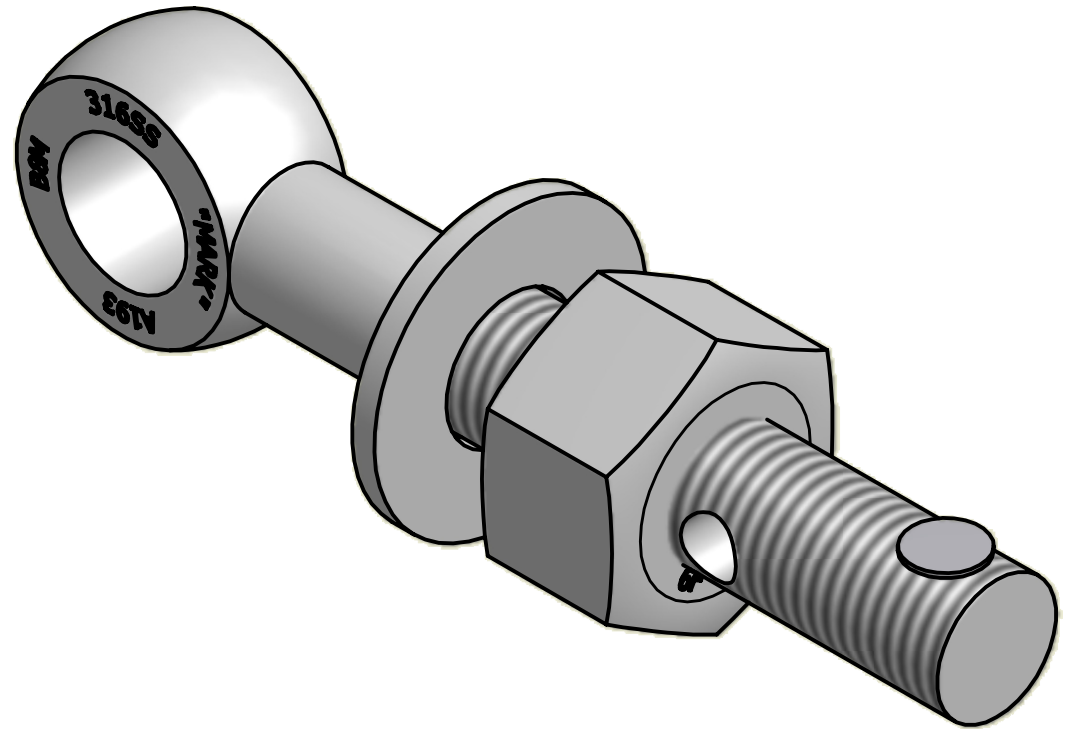
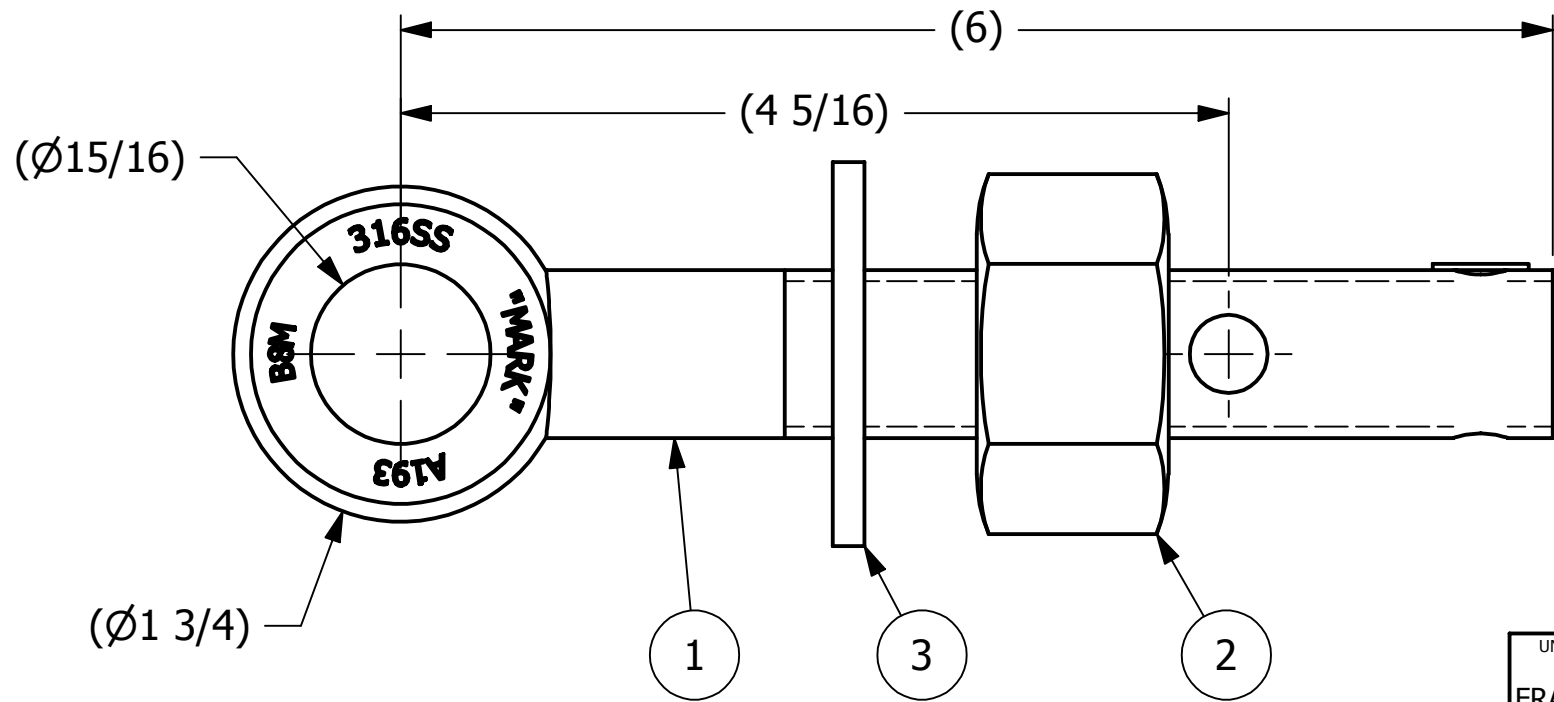
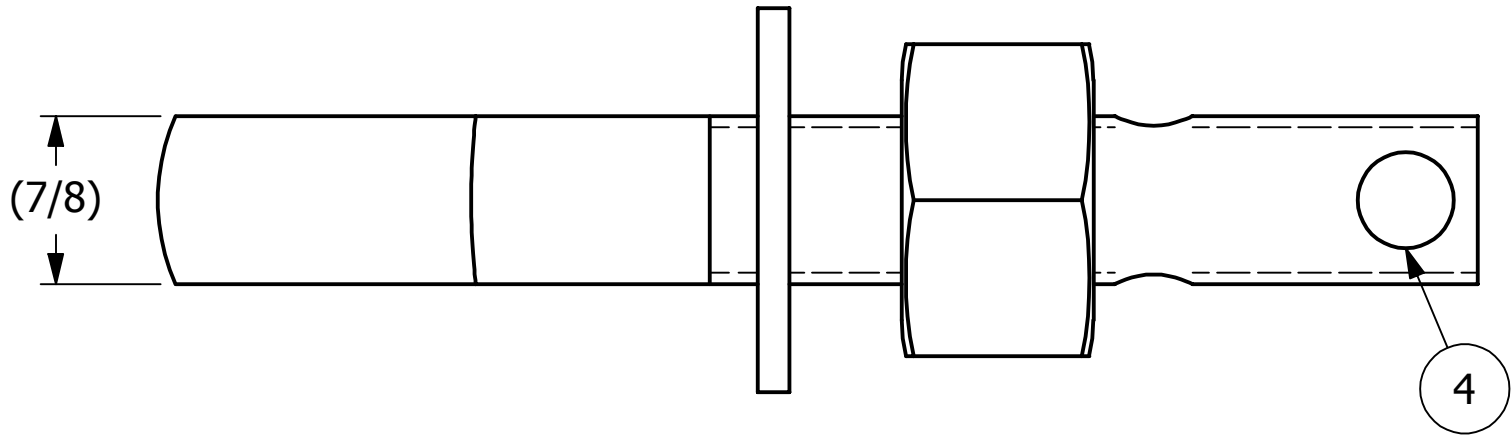


NO.	PART NAME	PART#	REQ'D	MATERIAL
1	EYEBOLT 7/8"X6"	EBR786HS6R	1	316 SS
2	HEAVY HEX NUT 7/8"-9	N78XS6S	1	416 SS
3	FLAT WASHER 7/8" SAE	WASH78S6	1	316 SS
4	HUCK RIVET 1/4"X13/16"	A16204	1	304 SS



ISOMETRIC VIEW

A	CHL	12-21-07	ADDED NEW PART TO SYSTEM	
REV	BY	DATE	DESCRIPTION	
<div> SALCO PRODUCTS, INC.</div>				
PART NAME: EYEBOLT ASSEMBLY 7/8"X6"				
MATERIAL: SEE BOM				
PROJECT #:		SHEET #:		SCALE:
WAG0249		1 OF 1		1:1
DRAWING #:		PART #:		
B20668		EB786X2HAS6		

UNLESS OTHERWISE SPECIFIED DIMENSIONAL TOLERANCES FRACTIONAL: $\pm 1/16$ X.XX: $\pm .03$ X.XXX: $\pm .015$ ANGULAR: $\pm 1^\circ$ DEBURR ALL SHARP EDGES. ALL MACHINED SURFACES TO HAVE A 125 RMS FINISH UNLESS NOTED OTHERWISE. THIRD ANGLE PROJECTION	DRAWN BY:	CHL
	CHECKED BY:	ACC
	PROTOTYPE BY:	CHL
	PROTOTYPE DATE:	6/1/2005
	APPROVED FOR PRODUCTION BY:	ACC
PRODUCTION DATE:		12/21/2007

THIS PRINT, PROPERTY OF SALCO PRODUCTS INC., CONTAINS PROPRIETARY INFORMATION AND MUST NOT BE COPIED, REPRODUCED, OR USED DETRIMENTALLY TO OUR INTEREST.