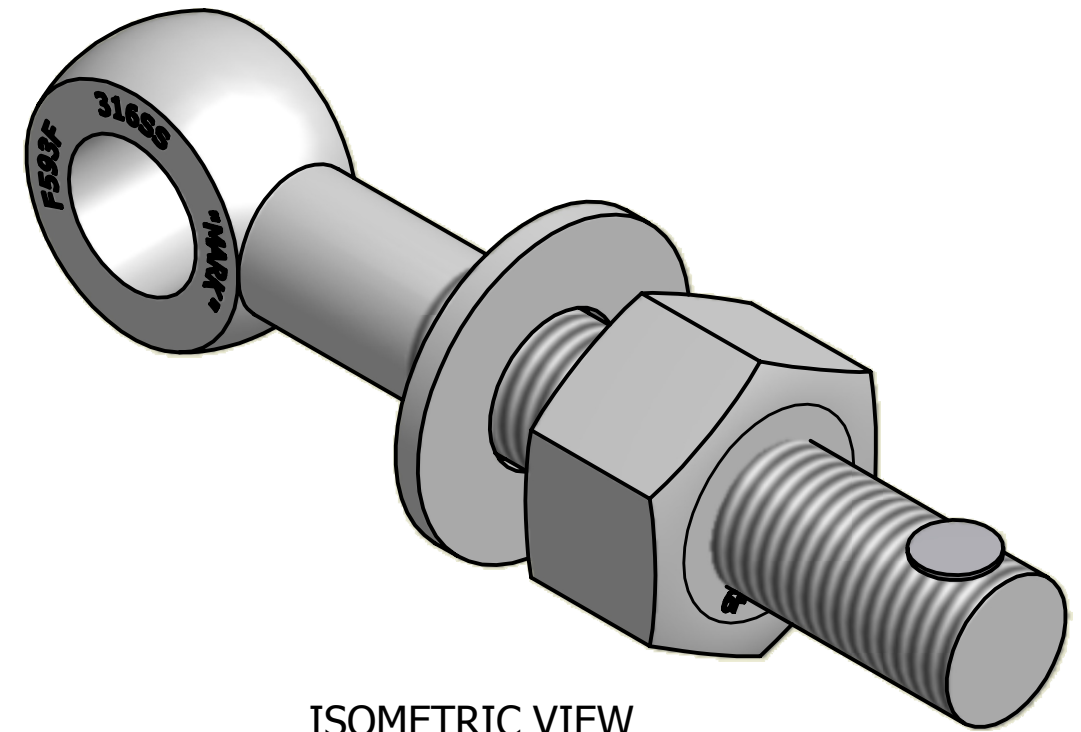
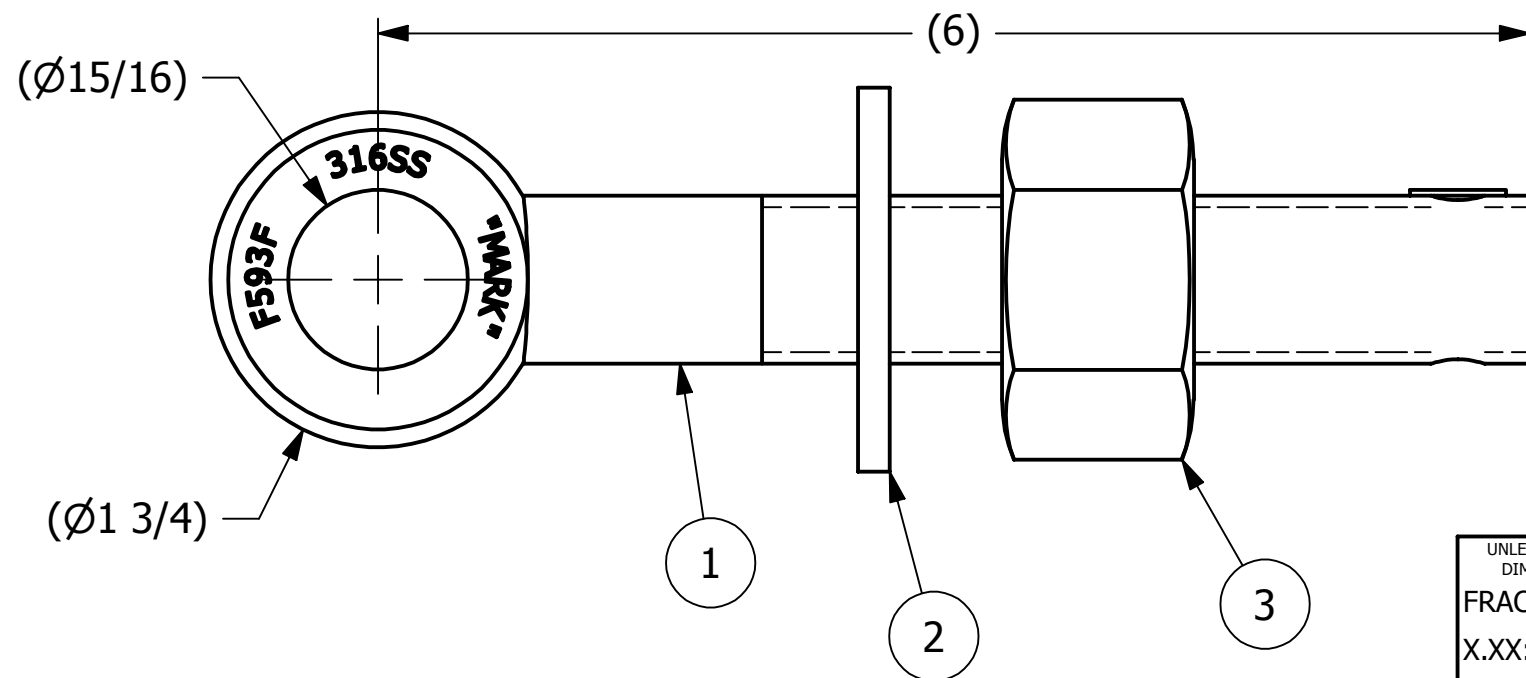
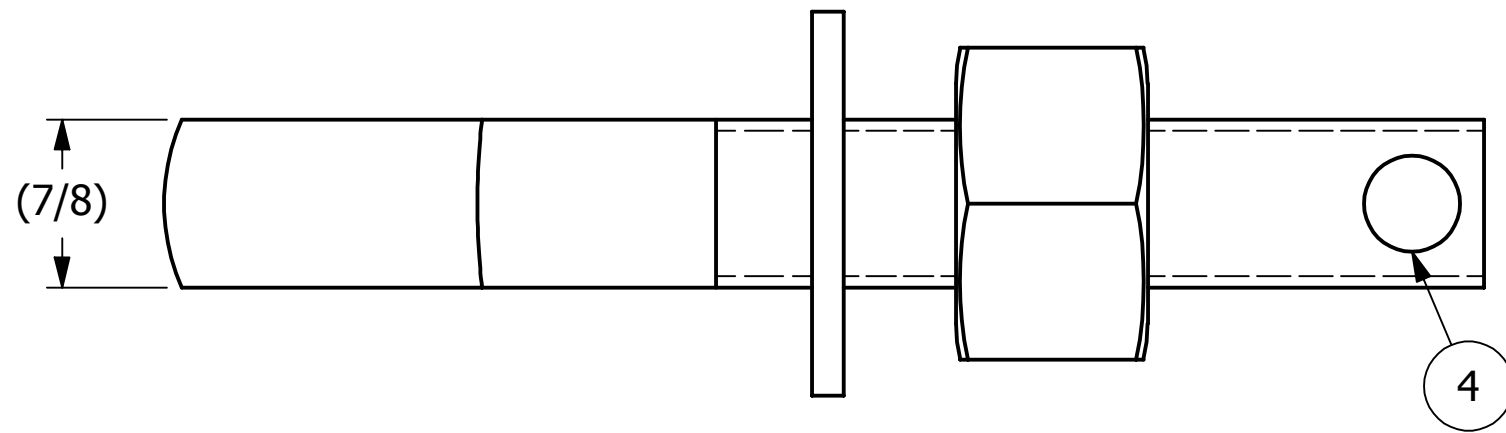


NO.	PART NAME	PART#	REQ'D	MATERIAL
1	EYEBOLT 7/8"X6"	EBR786S6R	1	316 SS
2	FLAT WASHER 7/8" SAE	WASH78S6	1	316 SS
3	HEAVY HEX NUT 7/8"-9	N78XS6S	1	416 SS
4	HUCK RIVET 1/4"X13/16"	A16204	1	304 SS



ISOMETRIC VIEW

REV	BY	DATE	DESCRIPTION
B	CHL	11-19-03	REPLACED WASH78S4 WITH WASH78S6
A	CHL	5-15-02	ADDED NEW PART TO SYSTEM

UNLESS OTHERWISE SPECIFIED DIMENSIONAL TOLERANCES FRACTIONAL: ±1/16 X.XX: ±.03 X.XXX: ±.015 ANGULAR: ±1° DEBURR ALL SHARP EDGES. ALL MACHINED SURFACES TO HAVE A 125 RMS FINISH UNLESS NOTED OTHERWISE.	DRAWN BY:	CHL
	CHECKED BY:	SAB
	PROTOTYPE BY:	CHL
	PROTOTYPE DATE:	5/12/2002
THIRD ANGLE PROJECTION 	APPROVED FOR PRODUCTION BY:	SAB
	PRODUCTION DATE:	5/12/2002

**SALCO PRODUCTS, INC.**

PART NAME: **EYEBOLT ASSEMBLY 7/8"X6"**

MATERIAL: **SEE BOM**

PROJECT #: **011129**      SHEET #: **1 OF 1**      SCALE: **1:1**

DRAWING #: **B16486**      PART #: **EB786X2AS6**

THIS PRINT, PROPERTY OF SALCO PRODUCTS INC., CONTAINS PROPRIETARY INFORMATION AND MUST NOT BE COPIED, REPRODUCED, OR USED DETRIMENTALLY TO OUR INTEREST.