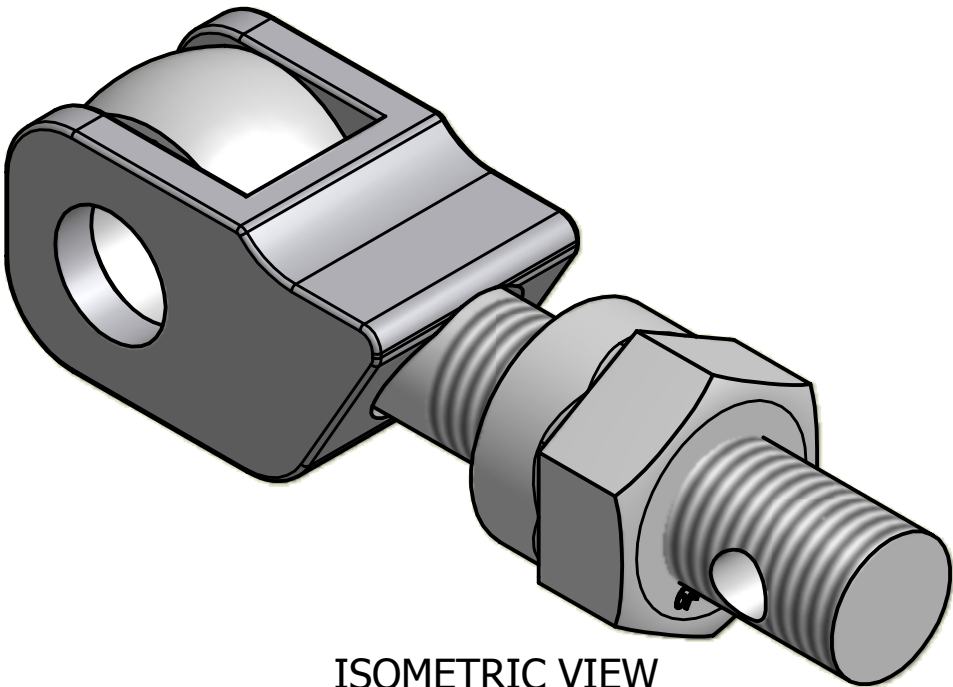
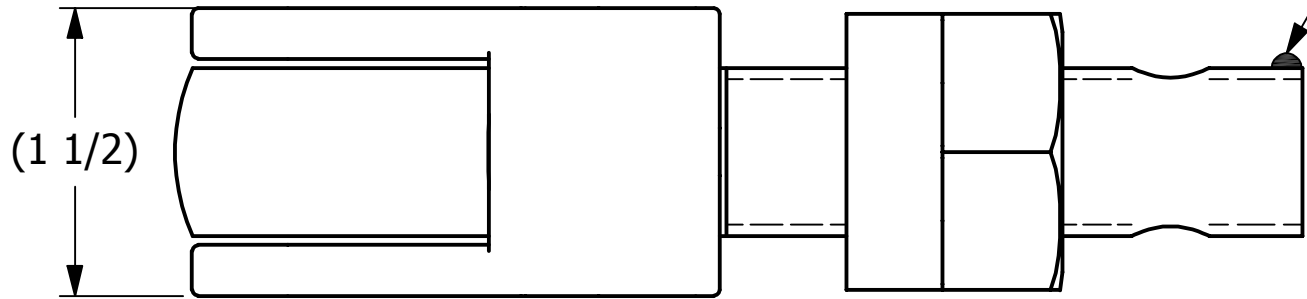
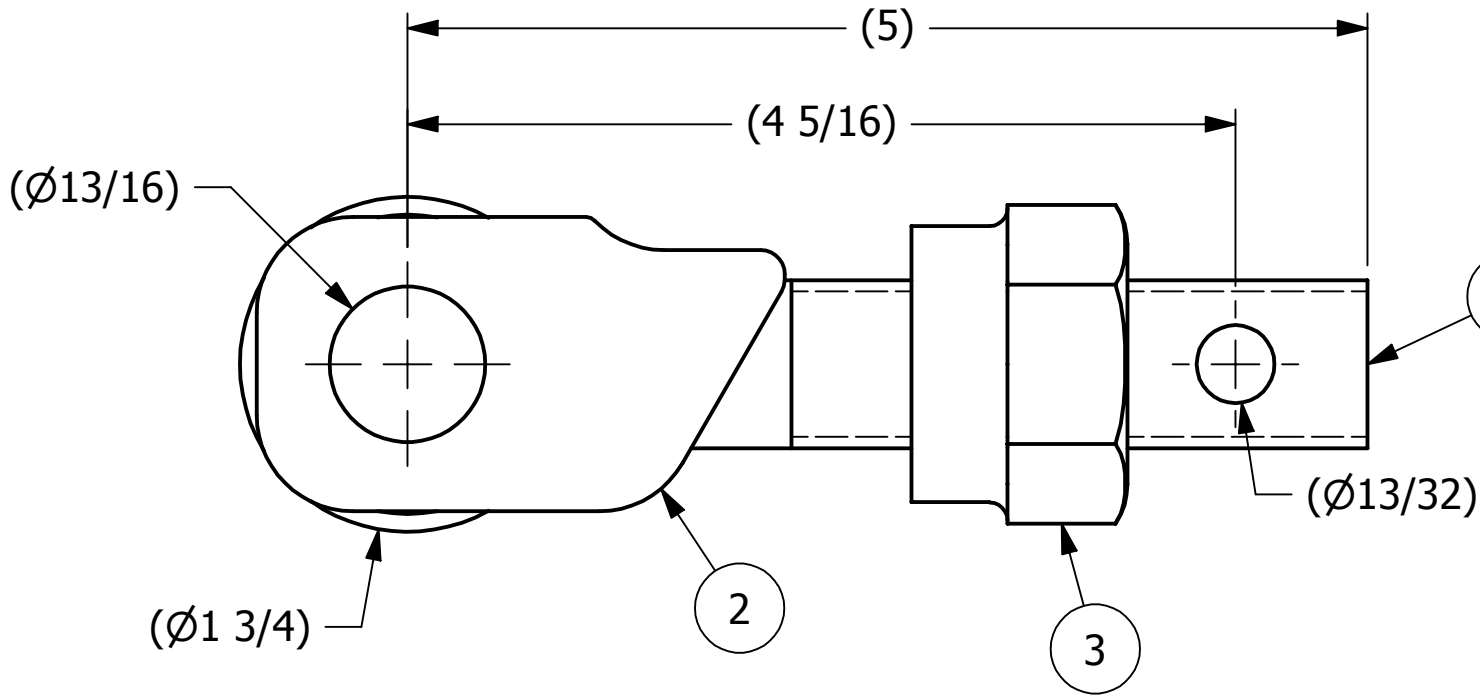


NO.	PART NAME	PART#	REQ'D	MATERIAL
1	EYEBOLT 7/8"X5"	EBR785HS6	1	316 SS
2	EYEBOLT SAFETY CATCH 7/8"	DEB275SC	1	316 SS
3	HEAVY HEX FERRULE NUT 7/8"-9	SN78XS6	1	416 SS

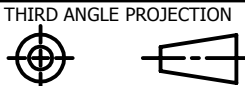
APPLY A BEAD OF WELD TO THE TWO END
THREADS AFTER INSTALLING SAFETY CATCH AND NUT.



ISOMETRIC VIEW



UNLESS OTHERWISE SPECIFIED
DIMENSIONAL TOLERANCES
FRACTIONAL: $\pm 1/16$
X.XX: $\pm .03$
X.XXX: $\pm .015$
ANGULAR: $\pm 1^\circ$
DEBURR ALL SHARP EDGES.
ALL MACHINED SURFACES TO
HAVE A 125 RMS FINISH UNLESS
NOTED OTHERWISE.



DRAWN BY: CHL

CHECKED BY: PJG

PROTOTYPE BY: CHL

PROTOTYPE
DATE: 10/23/2003

APPROVED FOR
PRODUCTION BY: PJG

PRODUCTION
DATE: 10/24/2004

A	CHL	2-26-04	ADDED NEW PART TO SYSTEM
REV	BY	DATE	DESCRIPTION



PART NAME:
EYEBOLT ASSEMBLY 7/8"X5"

MATERIAL: SEE BOM

PROJECT #: WAG0086

SHEET #: 1 OF 1

SCALE: 1:1

DRAWING #:

PART #:

B18468

EB785XSNHAS6SC