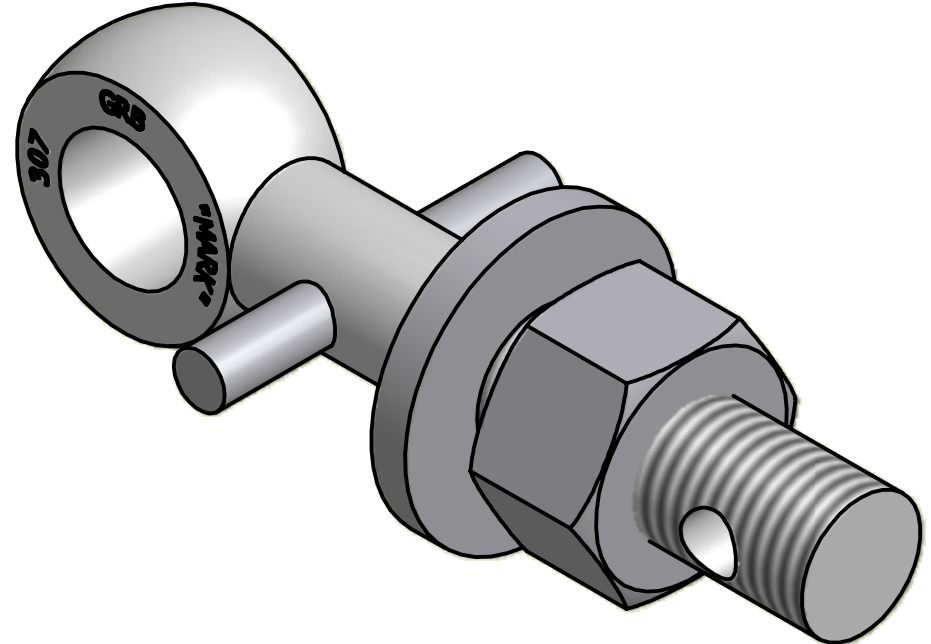
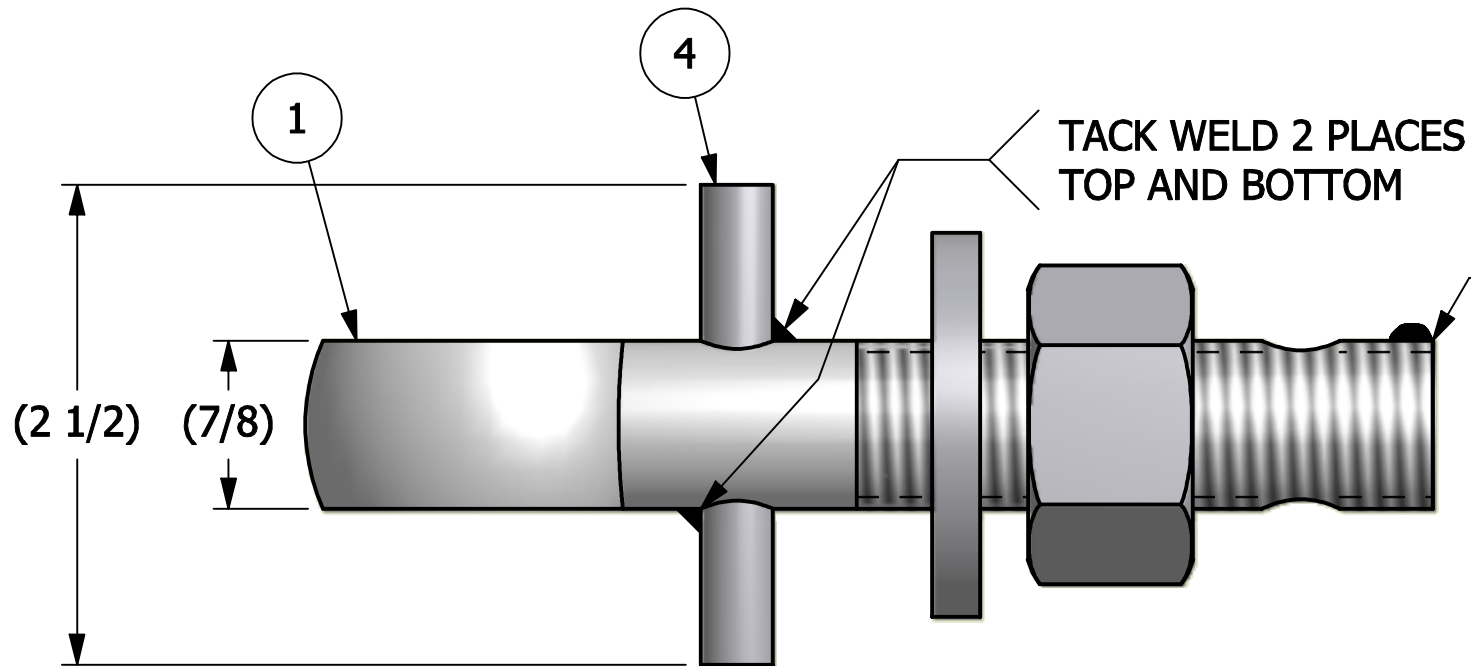
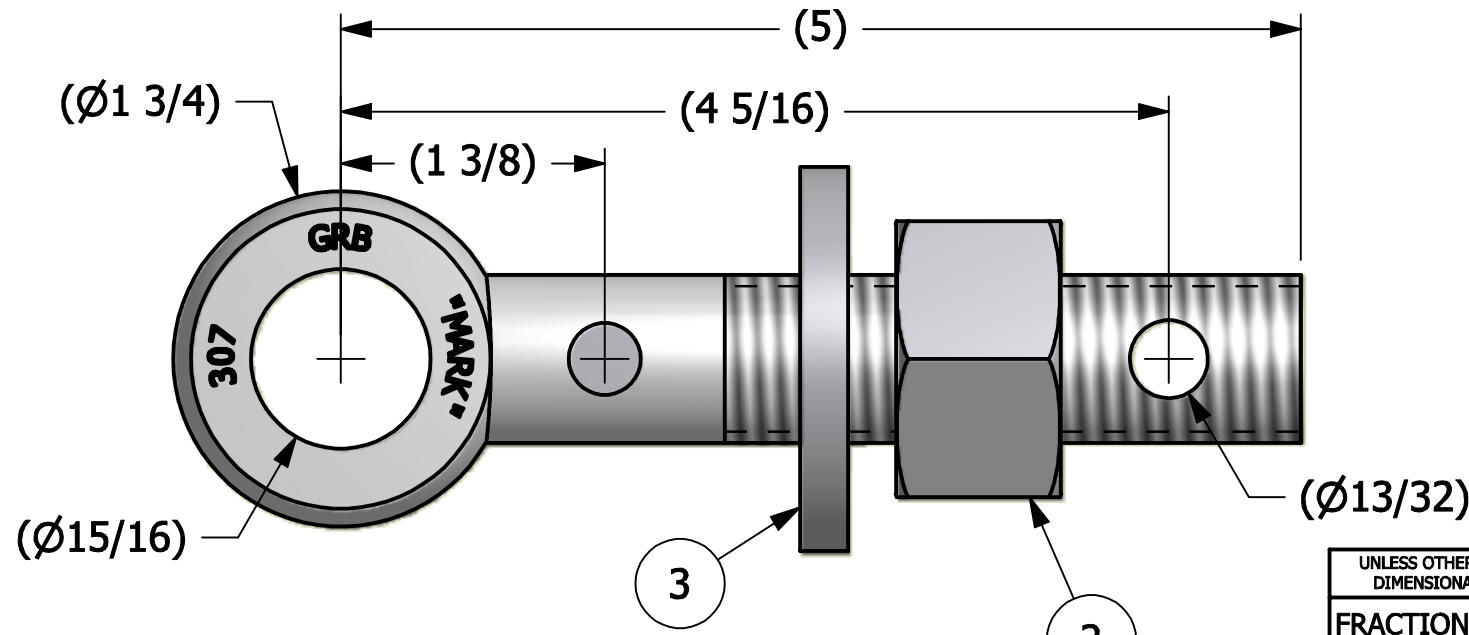


NO.	PART NAME	PART#	REQ'D	MATERIAL
1	EYEBOLT 7/8"X5"	EBR785HP	1	1045 CS
2	HEAVEY HEX NUT 7/8"-9	N78X	1	CARBON STEEL
3	FLAT WASHER 7/8" USS	WASH78T	1	CARBON STEEL
4	PIN 3/8"X2 1/2"	PIN375	1	CARBON STEEL



ISOMETRIC VIEW



NOTE:
 APPLY JET LUBE(PFPE GREASE) TO WORKING THREAD AREA,
 THE BOTTOM FACE OF THE NUT AND THE TOP FACE OF THE
 WASHER.

UNLESS OTHERWISE SPECIFIED DIMENSIONAL TOLERANCES	DRAWN BY:	CHL
FRACTIONAL: ±1/16	CHECKED BY:	ACC
X.XX: ±.03	PROTOTYPE BY:	CHL
X.XXX: ±.015	PROTOTYPE DATE:	1/2/2007
ANGULAR: ±1°	APPROVED FOR PRODUCTION BY:	ACC
THIS PRINT, PROPERTY OF SALCO PRODUCTS INC., CONTAINS PROPRIETARY INFORMATION AND MUST NOT BE COPIED, REPRODUCED, OR USED DETRIMENTALLY TO OUR INTEREST.	PRODUCTION DATE:	2/13/2008
THIRD ANGLE PROJECTION		

A	CHL	12-13-08	NEW PART ADDED TO SYSTEM
REV	BY	DATE	DESCRIPTION
SALCO PRODUCTS, INC.			
PART NAME: EYEBOLT ASSEMBLY 7/8"X5"			
MATERIAL: SEE BOM			
PROJECT #: WAG0383		SHEET #: 1 OF 1	SCALE: 1:1
DRAWING #: B22981		PART #: EB785XHAPL	