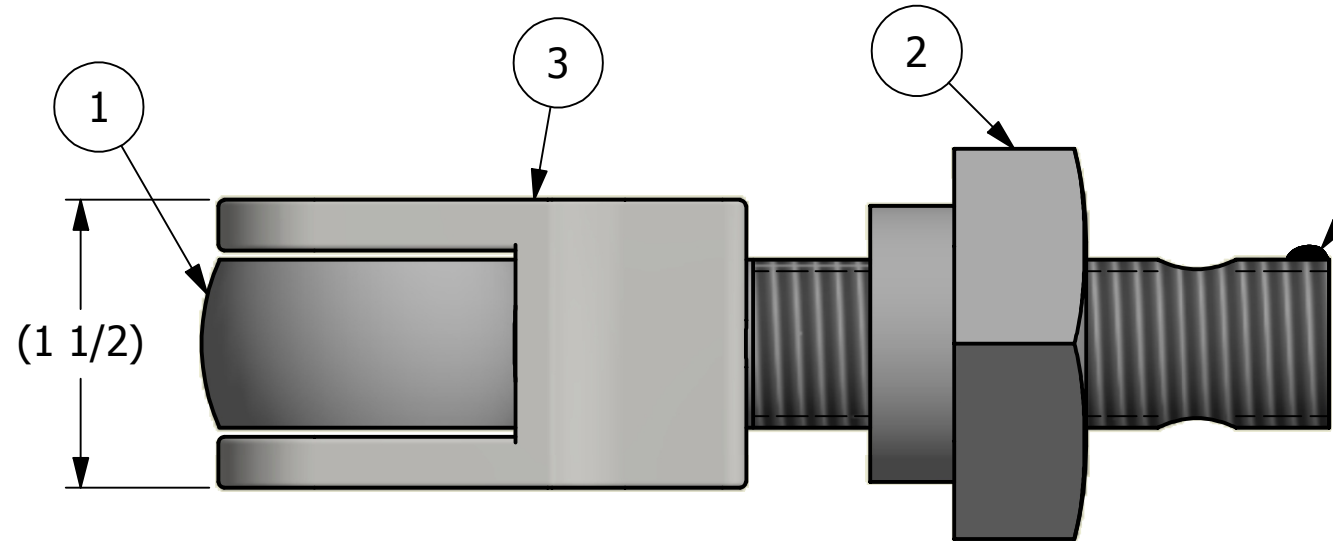
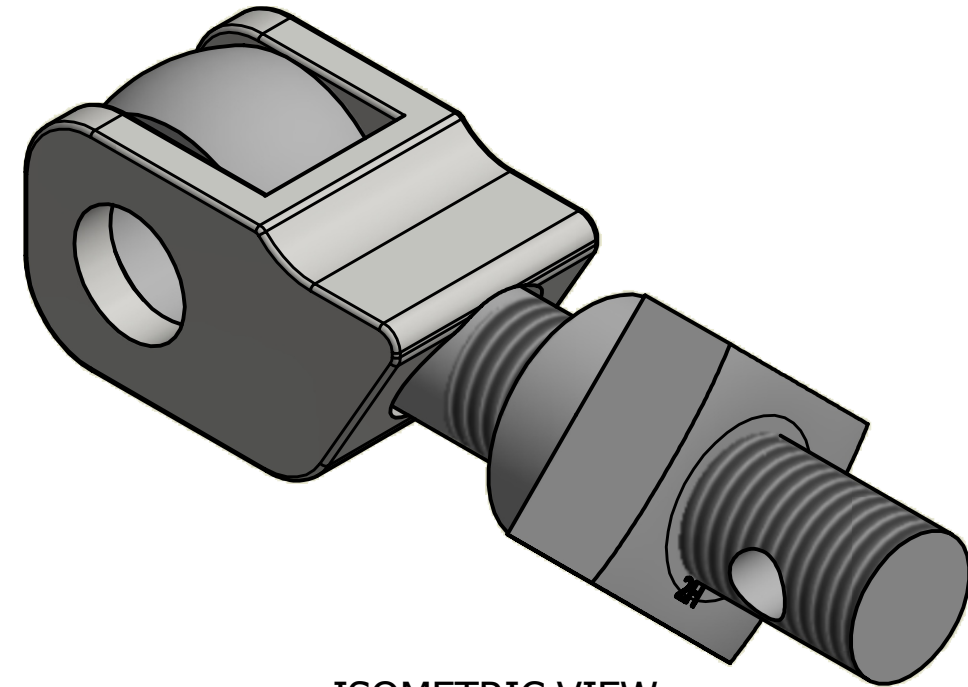


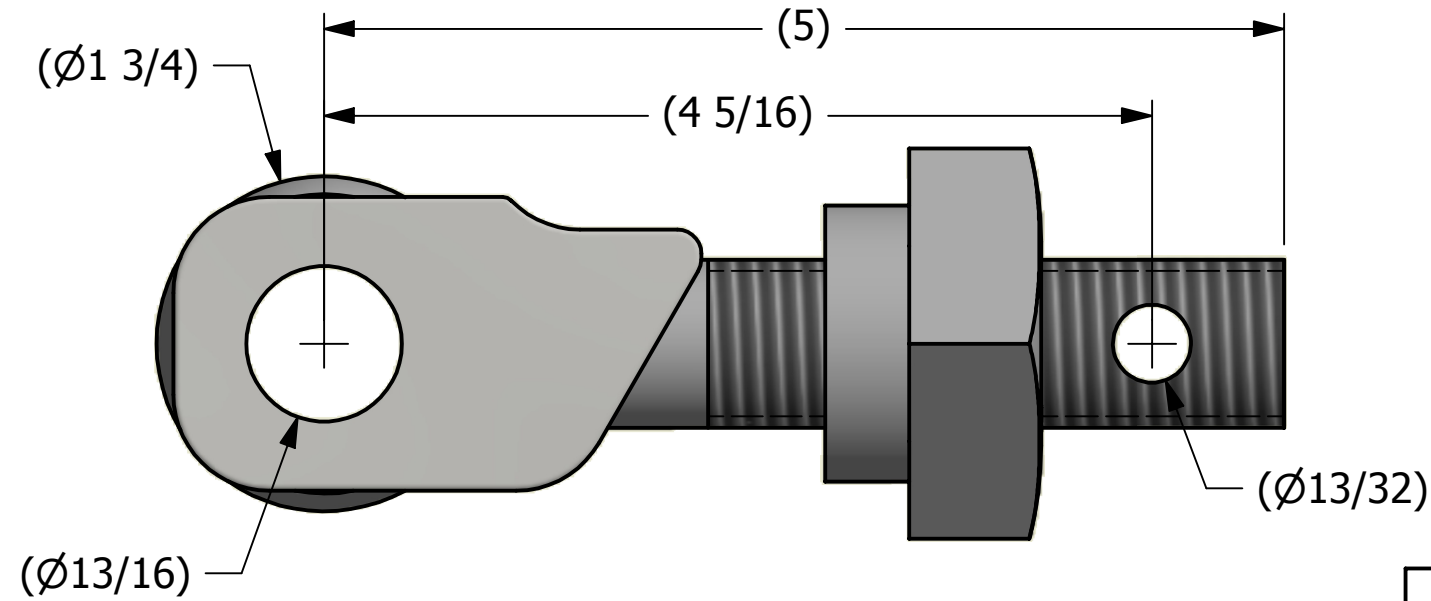
NO.	PART NAME	PART#	REQ'D	MATERIAL
1	EYEBOLT 7/8"X5"	EBR785H	1	CARBON STEEL
2	HEAVY SQUARE FERRULE NUT 7/8"-9	N78SN	1	CARBON STEEL
3	EYEBOLT SAFETY CATCH 7/8"	DEB275SC	1	316 SS



APPLY A BEAD OF WELD TO THE TWO END THREADS AFTER INSTALLING FERRULE NUT AND SAFETY CATCH.



ISOMETRIC VIEW



NOTE:
APPLY JET LUBE(PFPE GREASE) TO WORKING THREAD AREA,
AND THE BOTTOM FACE OF THE NUT.

REV	BY	DATE	DESCRIPTION
B	JJK	4-17-14	UPDATED EYEBOLT OD
A	CHL	12-3-08	NEW PART ADDED TO SYSTEM

UNLESS OTHERWISE SPECIFIED DIMENSIONAL TOLERANCES		DRAWN BY:	CHL
FRACTIONAL:	±1/16	CHECKED BY:	ACC
X.XX:	±.03	PROTOTYPE BY:	CHL
X.XXX:	±.015	PROTOTYPE DATE:	1/3/2007
ANGULAR:	±1°	APPROVED FOR PRODUCTION BY:	ACC
THIS PRINT, PROPERTY OF SALCO PRODUCTS INC., CONTAINS PROPRIETARY INFORMATION AND MUST NOT BE COPIED, REPRODUCED, OR USED DETRIMENTALLY TO OUR INTEREST.		PRODUCTION DATE:	12/3/2008
THIRD ANGLE PROJECTION			

SALCO PRODUCTS, INC.

PART NAME:
EYEBOLT ASSEMBLY 7/8"X5"

MATERIAL: **SEE BOM**

PROJECT #: **WAG0383** SHEET #: **1 OF 1** SCALE: **1:1**

DRAWING #: **B22985** PART #: **EB785HASCL**