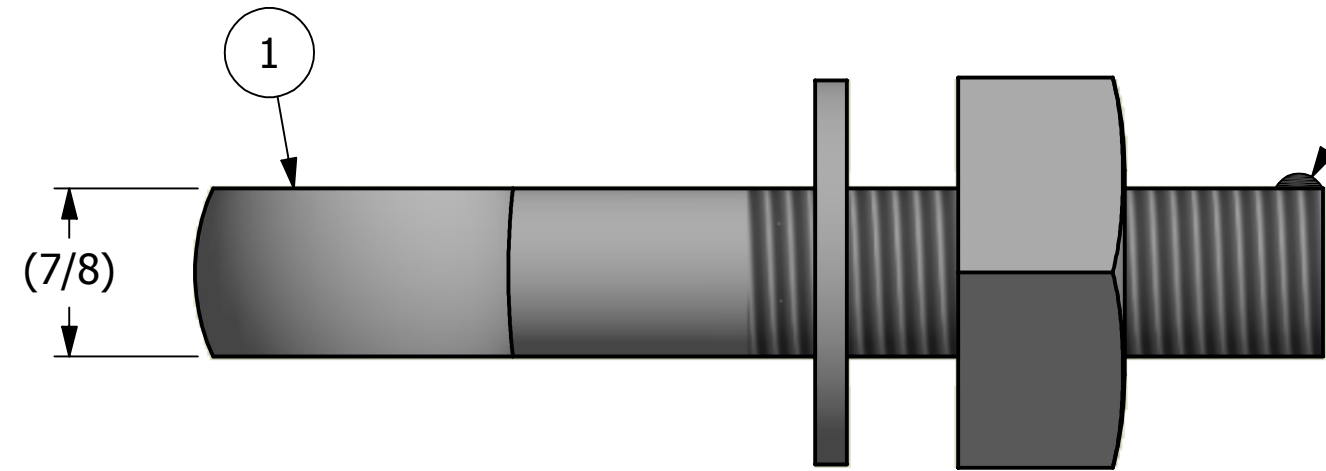
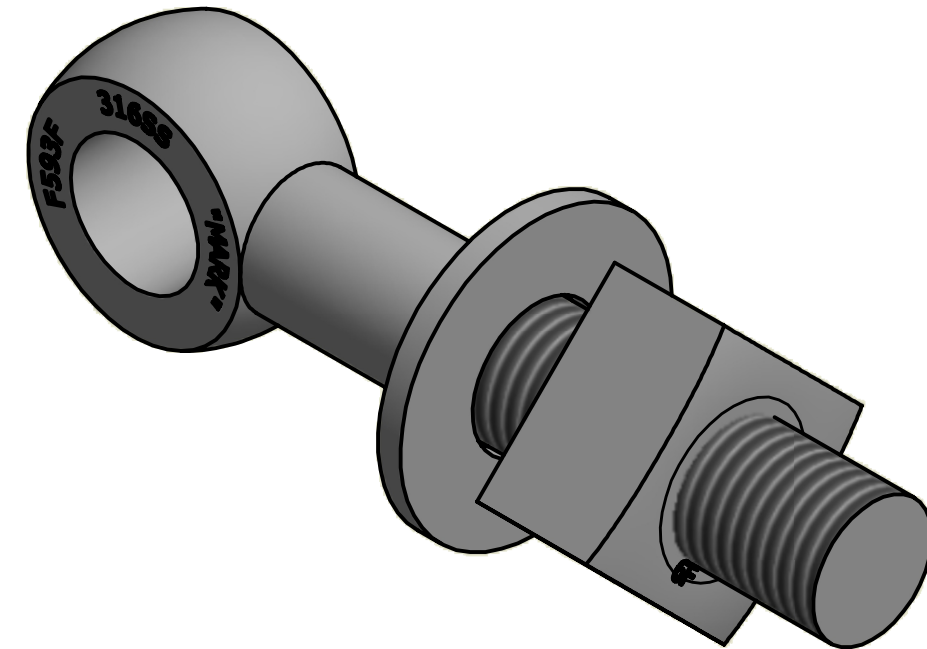


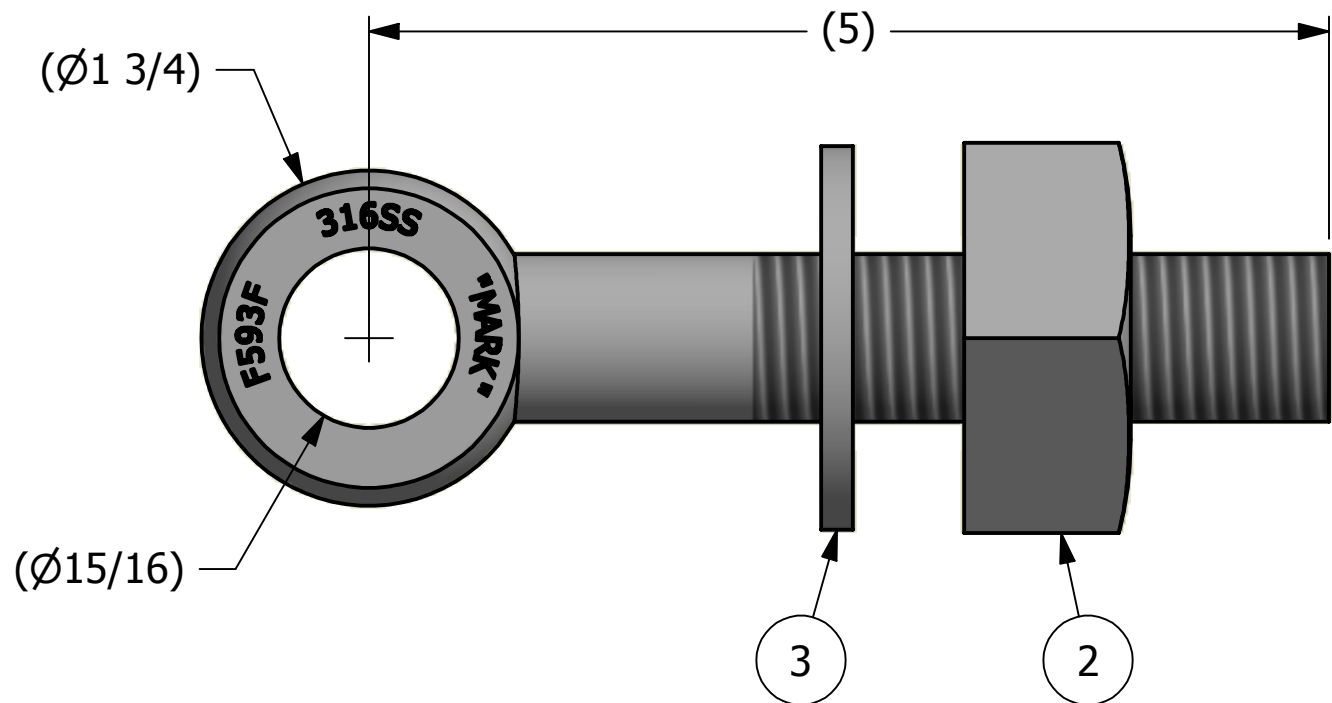
NO.	PART NAME	PART #	REQ'D	MATERIAL
1	EYEBOLT 7/8"X5"	EBR785S6	1	316 SS
2	HEAVY SQUARE NUT 7/8"-9	N78S6	1	416 SS
3	FLAT WASHER 7/8" SAE	WASH78S6	1	316 SS



APPLY A BEAD OF WELD TO THE TWO END THREADS AFTER INSTALLING WASHER AND NUT.



ISOMETRIC VIEW



REV	BY	DATE	DESCRIPTION
B	JJK	4-21-14	UPDATED EYEBOLT OD
A	CHL	4-10-07	NEW PART ADDED TO SYSTEM

UNLESS OTHERWISE SPECIFIED DIMENSIONAL TOLERANCES	DRAWN BY:	CHL
FRACTIONAL: ±1/16	CHECKED BY:	ACC
X.XX: ±.03	PROTOTYPE BY:	CHL
X.XXX: ±.015	PROTOTYPE DATE:	4/10/2007
ANGULAR: ±1°	APPROVED FOR PRODUCTION BY:	ACC
THIS PRINT, PROPERTY OF SALCO PRODUCTS INC., CONTAINS PROPRIETARY INFORMATION AND MUST NOT BE COPIED, REPRODUCED, OR USED DETRIMENTALLY TO OUR INTEREST.	PRODUCTION DATE:	4/10/2007
THIRD ANGLE PROJECTION		

**SALCO PRODUCTS, INC.**

PART NAME: **EYEBOLT ASSEMBLY 7/8"X5"**

MATERIAL: **SEE BOM**

PROJECT #: **WAG0337** SHEET #: **1 OF 1** SCALE: **1:1**

DRAWING #: **B23401** PART #: **EB785AS6**