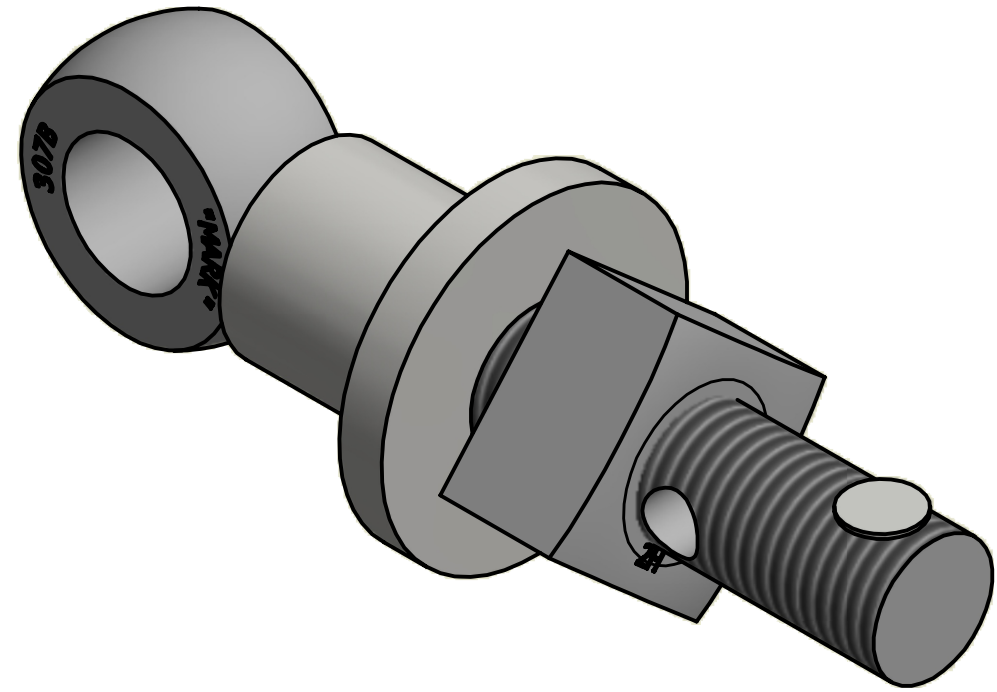
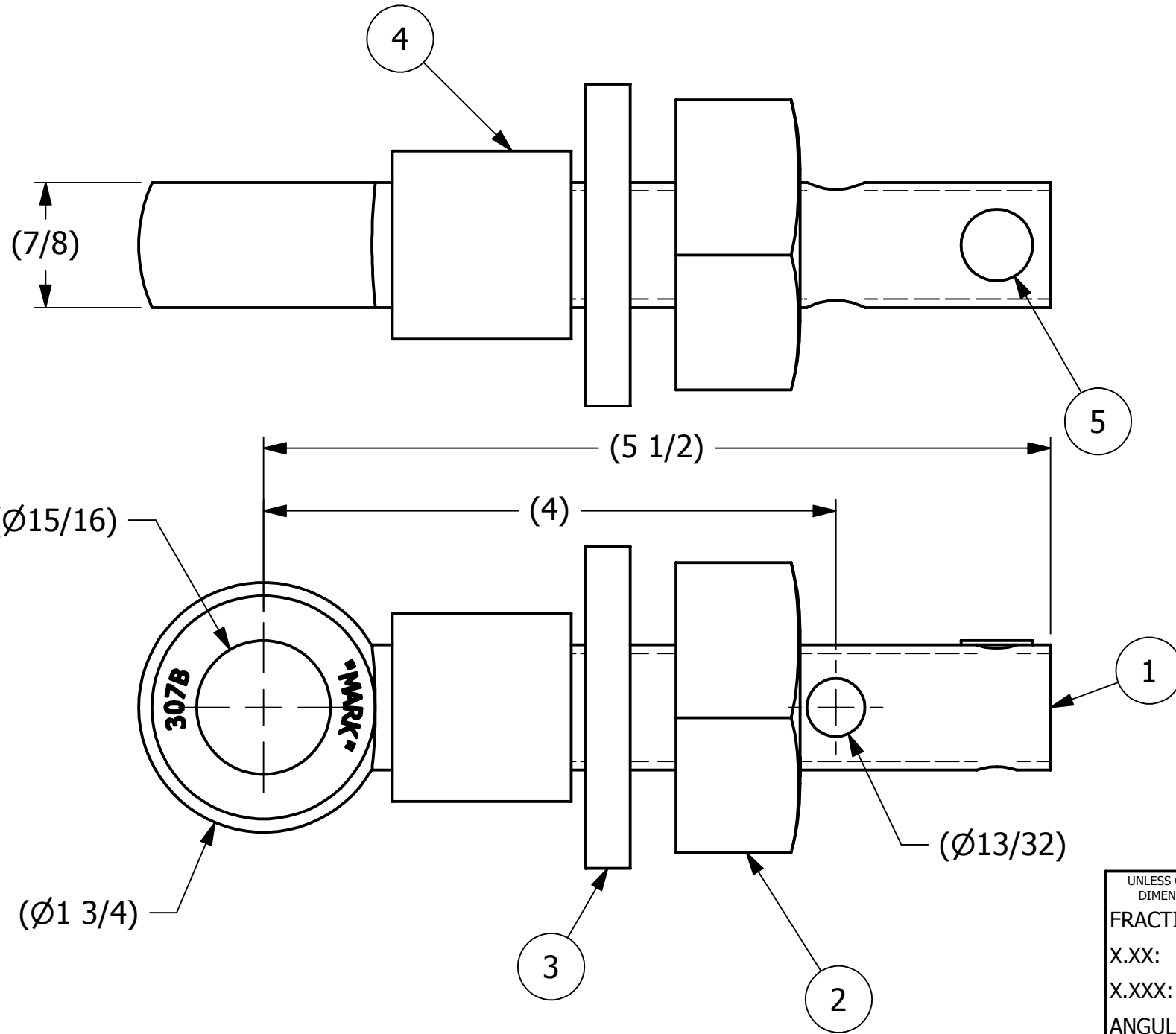


NO.	PART NAME	PART #	REQ'D	MATERIAL
1	EYEBOLT 7/8"X5 1/2"	EBR7855HR	1	CARBON STEEL
2	HEAVY SQUARE NUT 7/8"-9	N78	1	CARBON STEEL
3	FLAT WASHER 7/8"	WASHT516	1	CARBON BLACK
4	SAFETY COLLAR 1"	COLLAR1	1	CARBON STEEL
5	HUCK RIVET 1/4"X13/16"	A16204	1	304 SS



REV	BY	DATE	DESCRIPTION
C	JJK	4-16-14	UPDATED EYEBOLT OD
B	CHL	11-26-01	REPLACED SN14S W/ A16204
A	FOD	6-9-99	CHANGED ASSEM. & ITEM #1 PART NUMBERS EB7855HCGA/EB7855HR, UPDATED TITLEBLOCK

UNLESS OTHERWISE SPECIFIED DIMENSIONAL TOLERANCES	DRAWN BY:	FOD
FRACTIONAL: ±1/16	CHECKED BY:	SAB
X.XX: ±.03	PROTOTYPE BY:	FOD
X.XXX: ±.015	PROTOTYPE DATE:	9/2/1998
ANGULAR: ±1°	APPROVED FOR PRODUCTION BY:	
DEBURR ALL SHARP EDGES. ALL MACHINED SURFACES TO HAVE A 125 RMS FINISH UNLESS NOTED OTHERWISE.	PRODUCTION DATE:	
THIRD ANGLE PROJECTION		

SALCO PRODUCTS, INC.

PART NAME: **EYEBOLT ASSEMBLY 7/8" X 5 1/2"**

MATERIAL: **SEE BOM**

PROJECT #: SHEET #: **1 OF 1** SCALE: **1:1**

DRAWING #: **B9662** PART #: **EB7855HCGA**

THIS PRINT, PROPERTY OF SALCO PRODUCTS INC., CONTAINS PROPRIETARY INFORMATION AND MUST NOT BE COPIED, REPRODUCED, OR USED DETRIMENTALLY TO OUR INTEREST.