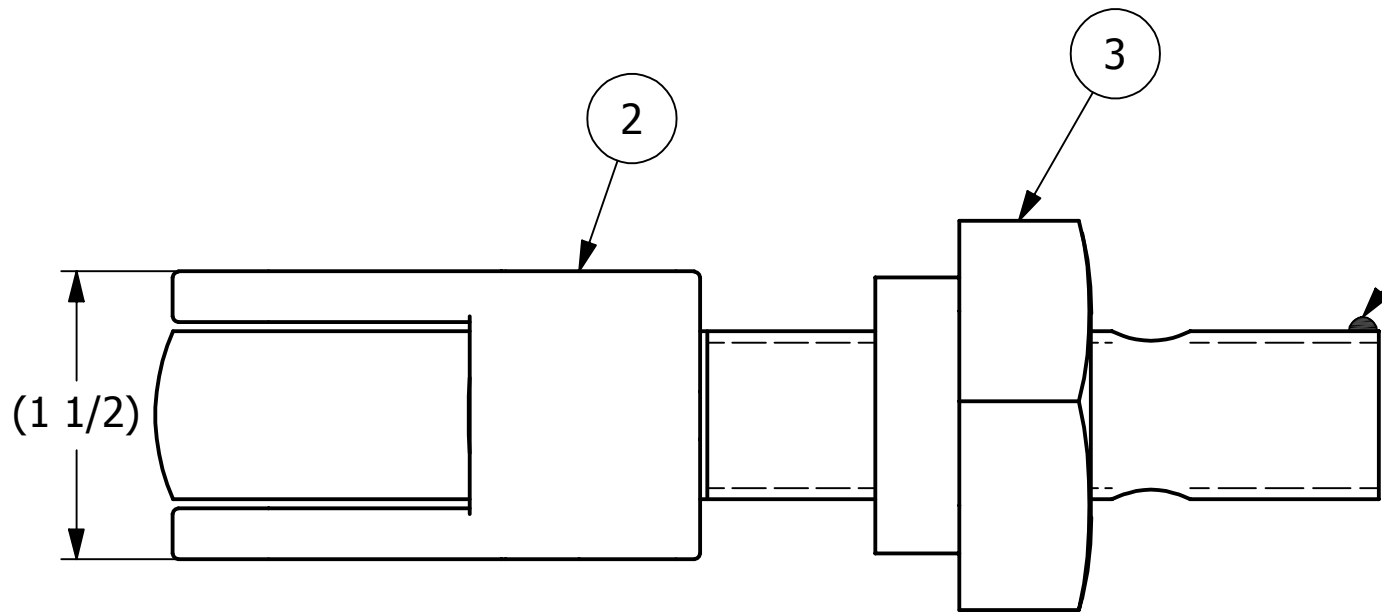
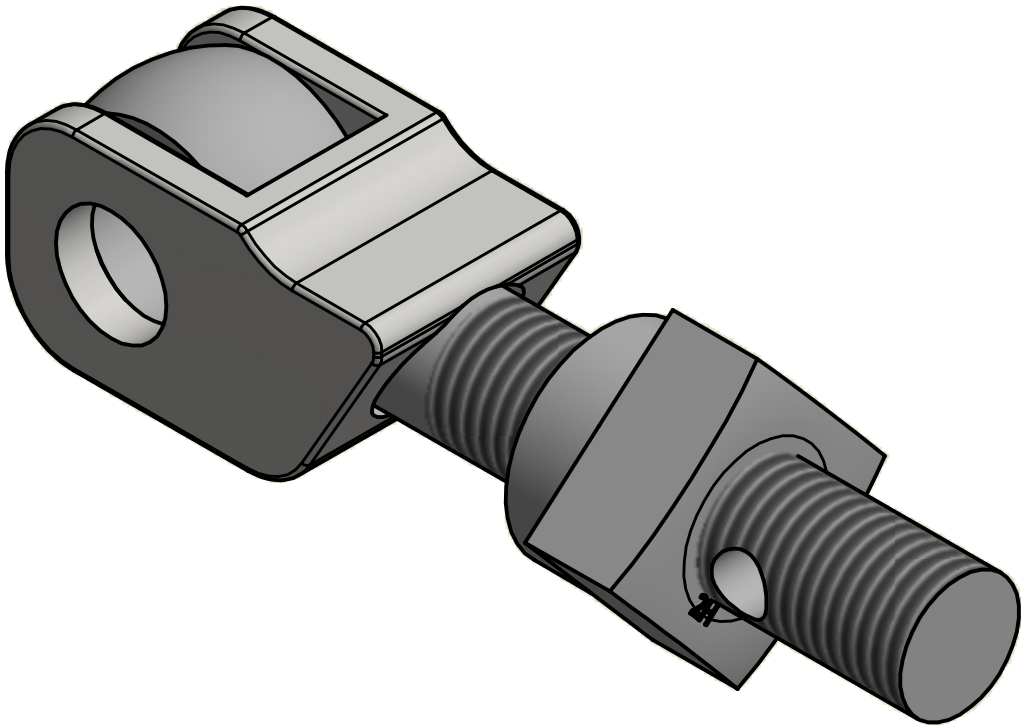


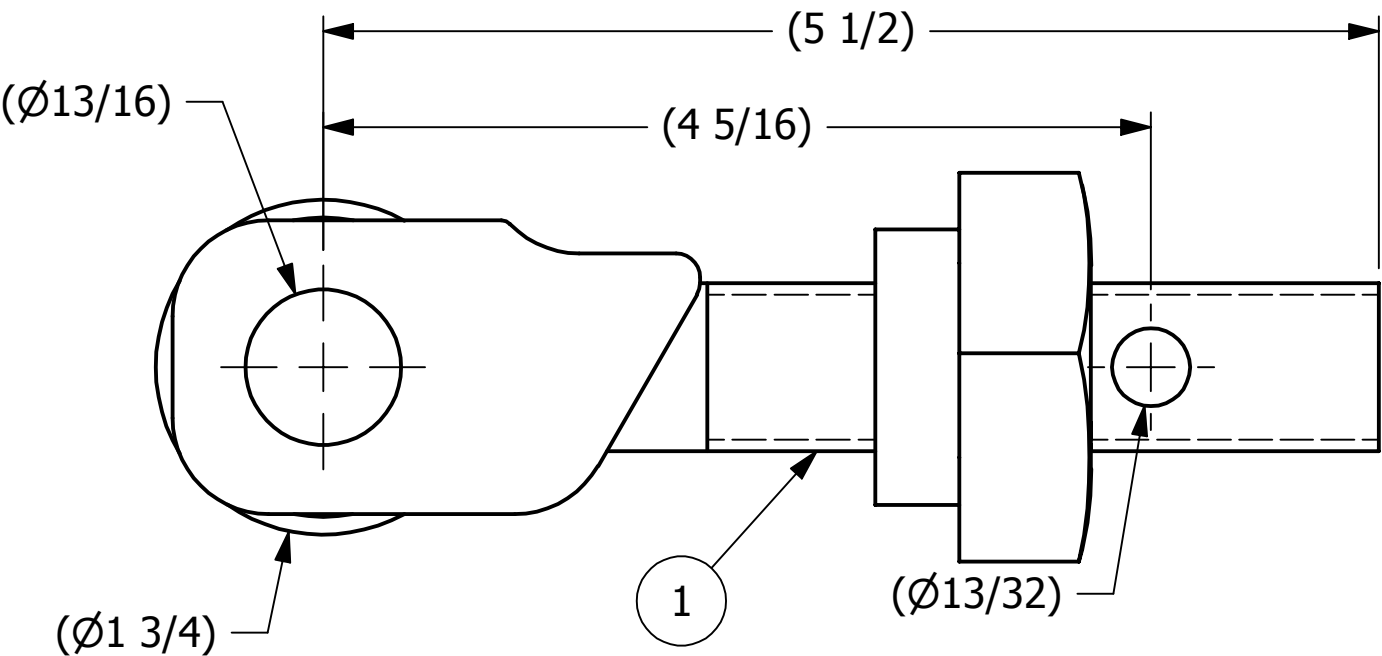
NO.	PART NAME	PART #	REQ'D	MATERIAL
1	EYEBOLT 7/8"X5 1/2"	EBR7855H	1	CARBON STEEL
2	EYEBOLT SAFETY CATCH 7/8"	DEB275SC	1	316 SS
3	HEAVY SQUARE FERRULE NUT 7/8"-9	N78SN	1	CARBON STEEL




APPLY A BEAD OF WELD TO THE TWO END
THREADS AFTER INSTALLING SAFETY CATCH AND NUT.



ISOMETRIC VIEW



UNLESS OTHERWISE SPECIFIED DIMENSIONAL TOLERANCES FRACTIONAL: ±1/16 X.XX: ±.03 X.XXX: ±.015 ANGULAR: ±1° DEBURR ALL SHARP EDGES. ALL MACHINED SURFACES TO HAVE A 125 RMS FINISH UNLESS NOTED OTHERWISE. THIRD ANGLE PROJECTION	DRAWN BY:	FOD
	CHECKED BY:	ACC
	PROTOTYPE BY:	FOD
	PROTOTYPE DATE:	9/30/1999
	APPROVED FOR PRODUCTION BY:	ACC
	PRODUCTION DATE:	9/3/1999

B	JJK	4-16-14	UPDATED EYEBOLT OD
A	ACC	9-3-99	DRAWING RELEASED FOR PRODUCTION
			
PART NAME: EYEBOLT ASSEMBLY 7/8"X5 1/2"			
MATERIAL: SEE BOM			
PROJECT #:		SHEET #: 1 OF 1	SCALE: 1:1
DRAWING #:		PART #:	
B13817		EB7855HASC	