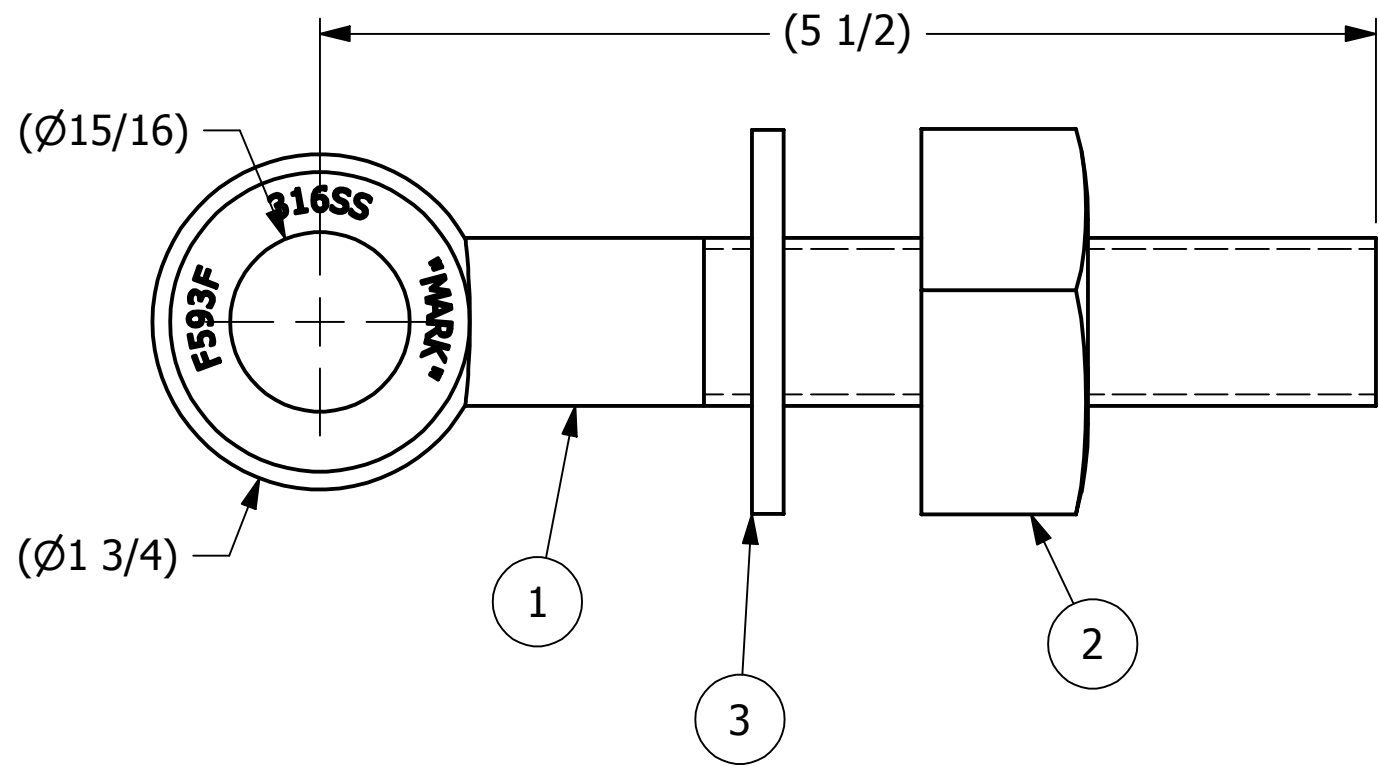
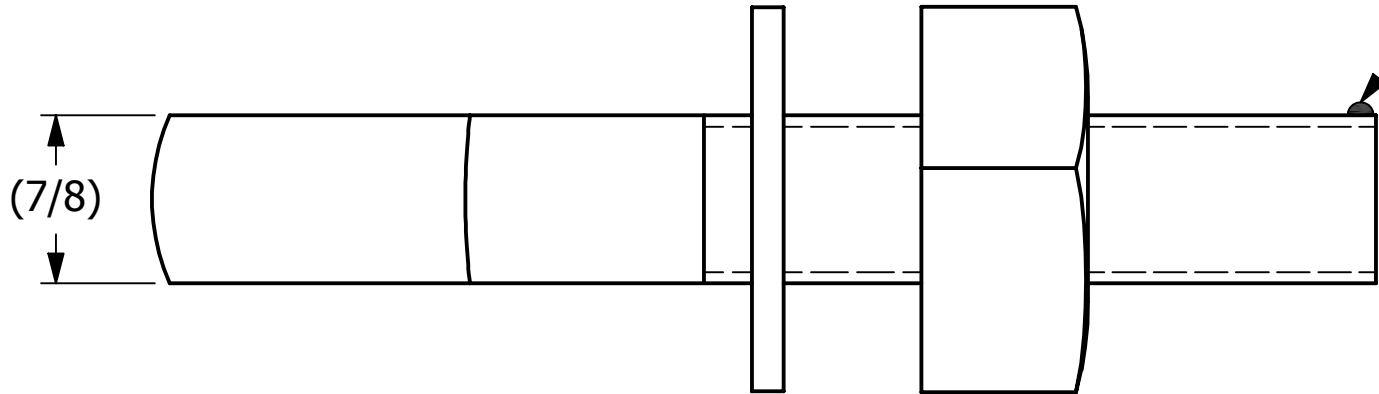
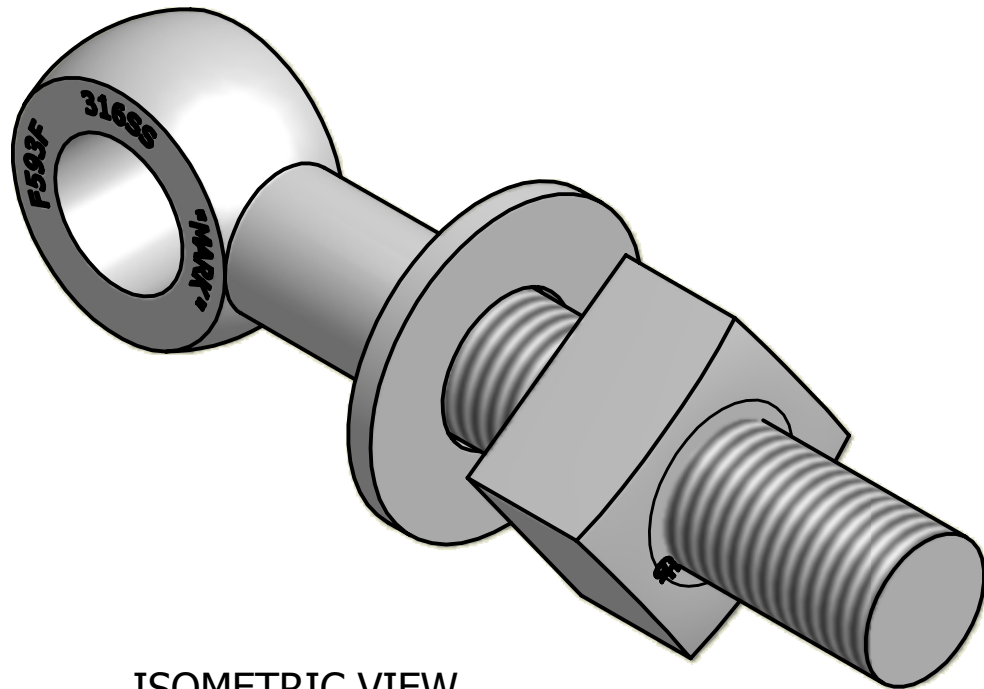


2		1		
NO.	PART NAME	PART #	REQ'D	MATERIAL
1	EYEBOLT 7/8"X5 1/2"	EBR7855S6	1	316 SS
2	HEAVY SQUARE NUT 7/8"-9	N78S6	1	416 SS
3	FLAT WASHER 7/8" SAE	WASH78S6	1	316 SS




APPLY A BEAD OF WELD TO THE TWO END
THREADS AFTER INSTALLING WASHER AND NUT.



UNLESS OTHERWISE SPECIFIED
DIMENSIONAL TOLERANCES
FRACTIONAL: $\pm 1/16$
X.XX: $\pm .03$
X.XXX: $\pm .015$
ANGULAR: $\pm 1^\circ$
DEBURR ALL SHARP EDGES.
ALL MACHINED SURFACES TO
HAVE A 125 RMS FINISH UNLESS
NOTED OTHERWISE.



DRAWN BY:	CHL
CHECKED BY:	ACC
PROTOTYPE BY:	CHL
PROTOTYPE DATE:	2/2/2005
APPROVED FOR PRODUCTION BY:	ACC
PRODUCTION DATE:	4/18/2005

A	CHL	4-18-05	ADDED NEW PART TO SYSTEM
REV	BY	DATE	DESCRIPTION
 SALCO PRODUCTS, INC.			
PART NAME: EYEBOLT ASSEMBLY 7/8"X5 1/2"			
MATERIAL: SEE BOM			
PROJECT #: WAG0222		SHEET #: 1 OF 1	SCALE: 1:1
DRAWING #: B20132		PART #: EB7855AS6	

THIS PRINT, PROPERTY OF SALCO PRODUCTS INC., CONTAINS PROPRIETARY INFORMATION
AND MUST NOT BE COPIED, REPRODUCED, OR USED DETRIMENTALLY TO OUR INTEREST.