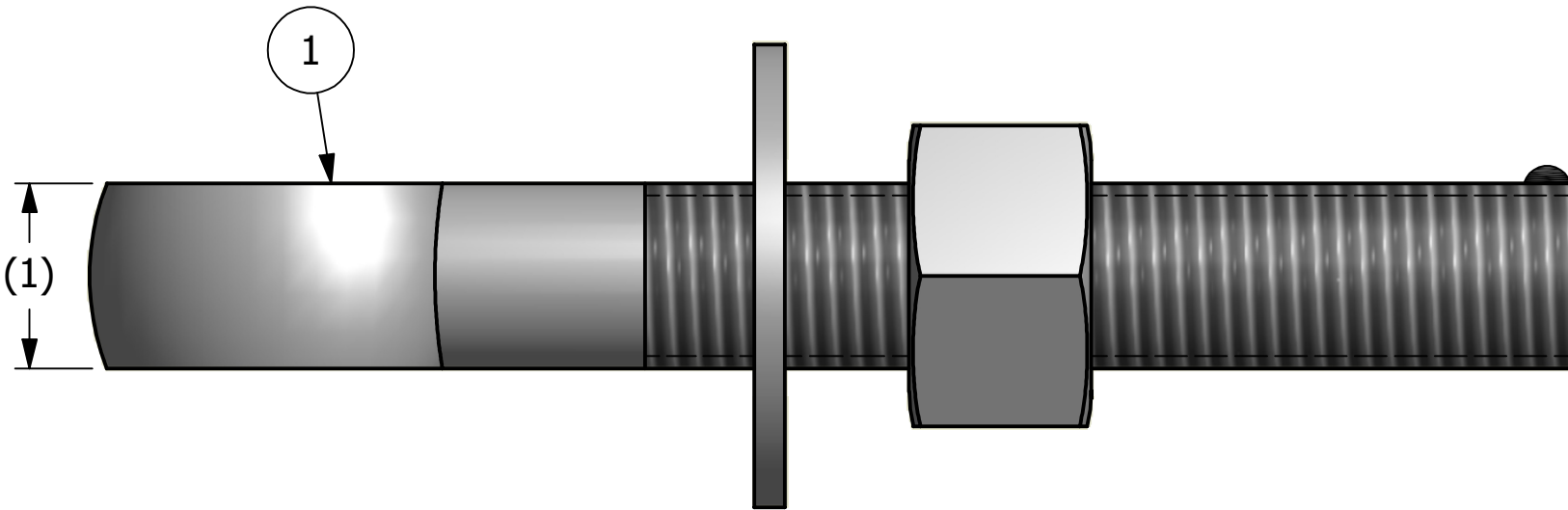
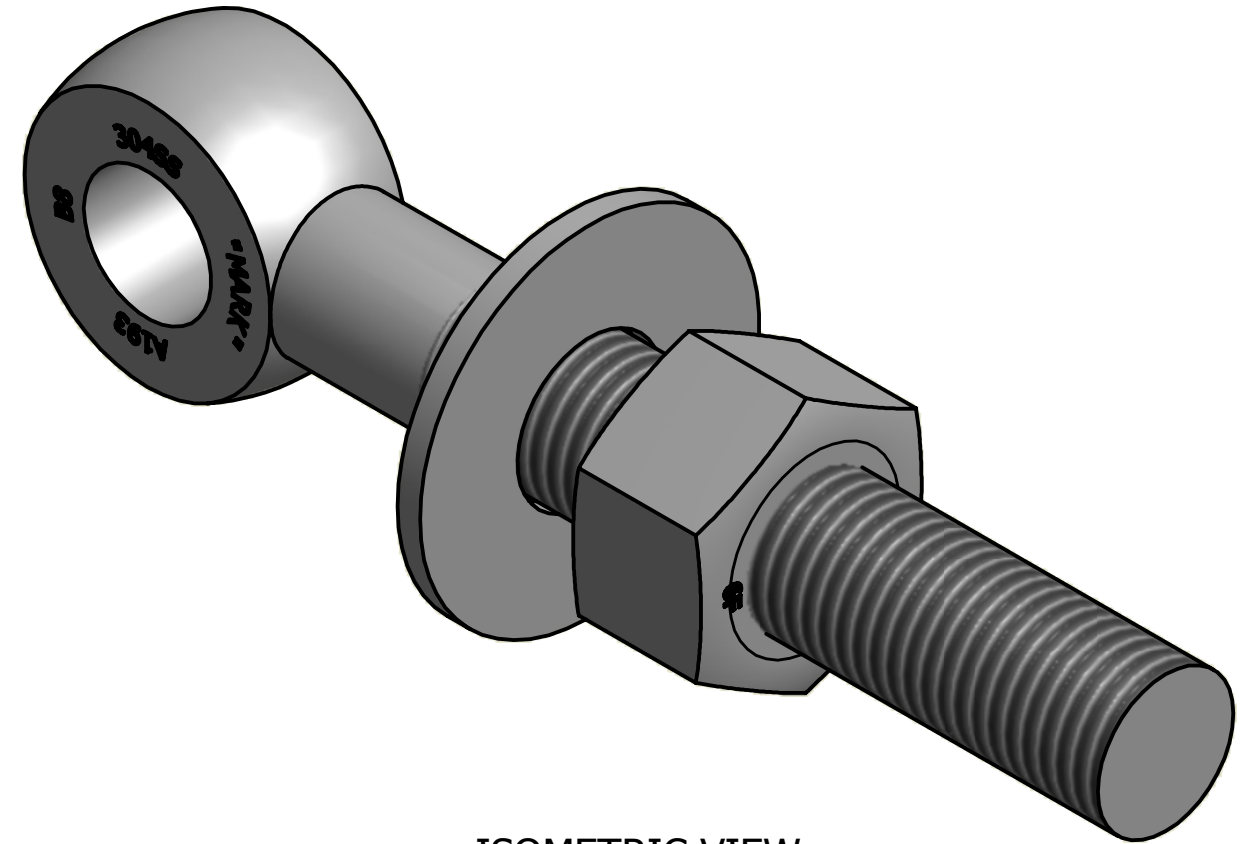


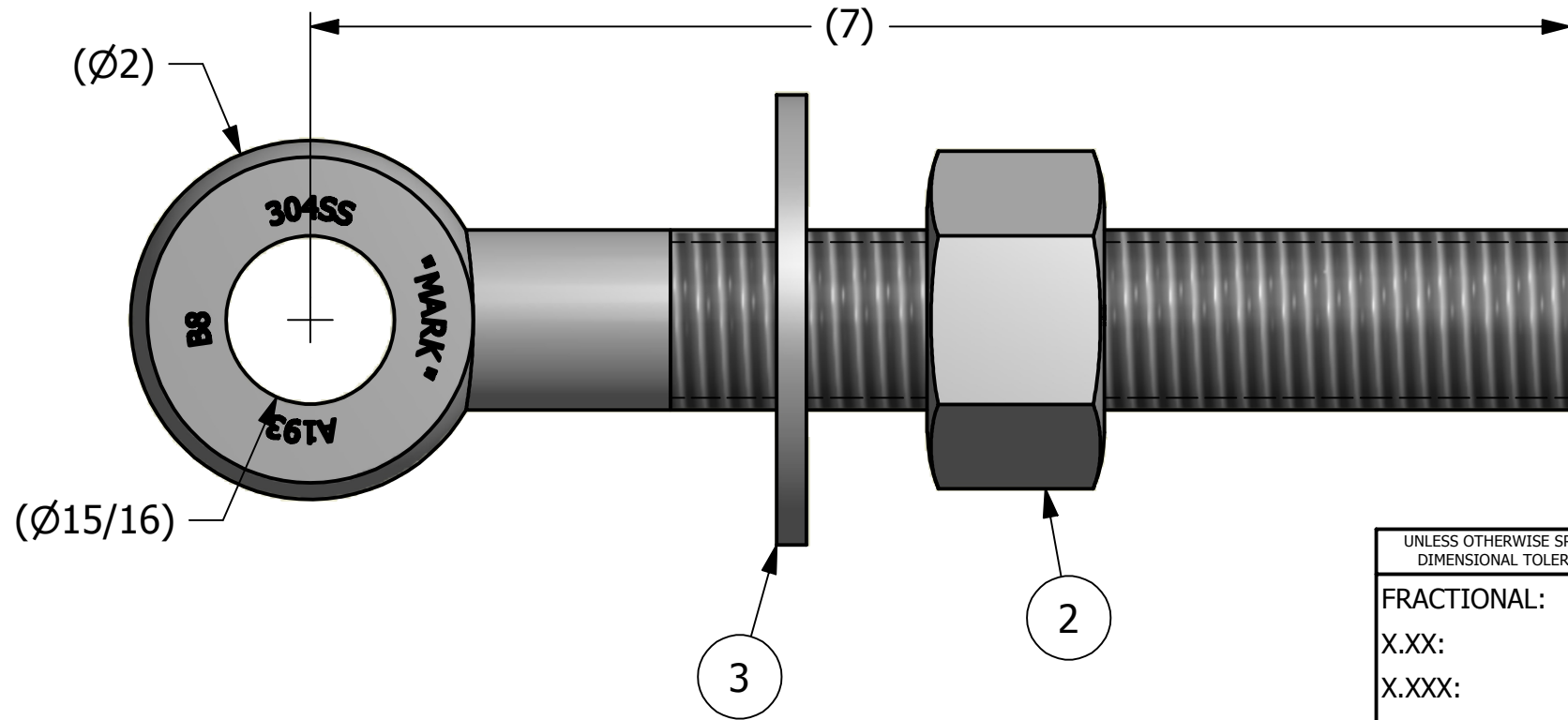
NO.	PART NAME	PART#	REQ'D	MATERIAL
1	EYEBOLT 1"X7"	EBR17S4	1	304SS
2	HEAVY HEX NUT 1"-8	N1XS6	1	416 SS
3	FLAT WASHER 1" USS	WASH1S6	1	316 SS



APPLY A BEAD OF WELD TO THE TWO END THREADS AFTER INSTALLING WASHER AND NUT.



ISOMETRIC VIEW



A	CHL	6-9-09	NEW PART ADDED TO SYSTEM
REV	BY	DATE	DESCRIPTION

UNLESS OTHERWISE SPECIFIED DIMENSIONAL TOLERANCES	DRAWN BY:	CHL
FRACTIONAL: ±1/16	CHECKED BY:	WRB
X.XX: ±.03	PROTOTYPE BY:	CHL
X.XXX: ±.015	PROTOTYPE DATE:	4/29/2009
ANGULAR: ±1°	APPROVED FOR PRODUCTION BY:	WRB
THIS PRINT, PROPERTY OF SALCO PRODUCTS INC., CONTAINS PROPRIETARY INFORMATION AND MUST NOT BE COPIED, REPRODUCED, OR USED DETRIMENTALLY TO OUR INTEREST.	PRODUCTION DATE:	6/9/2009
THIRD ANGLE PROJECTION		

**SALCO PRODUCTS, INC.**

PART NAME: EYEBOLT ASSEMBLY 1"X7"

MATERIAL: SEE BOM

PROJECT #: WAG0666      SHEET #: 1 OF 1      SCALE: 1:1

DRAWING #: B26750      PART #: EB17XAS4

4

3

2

1

4

3

2

1