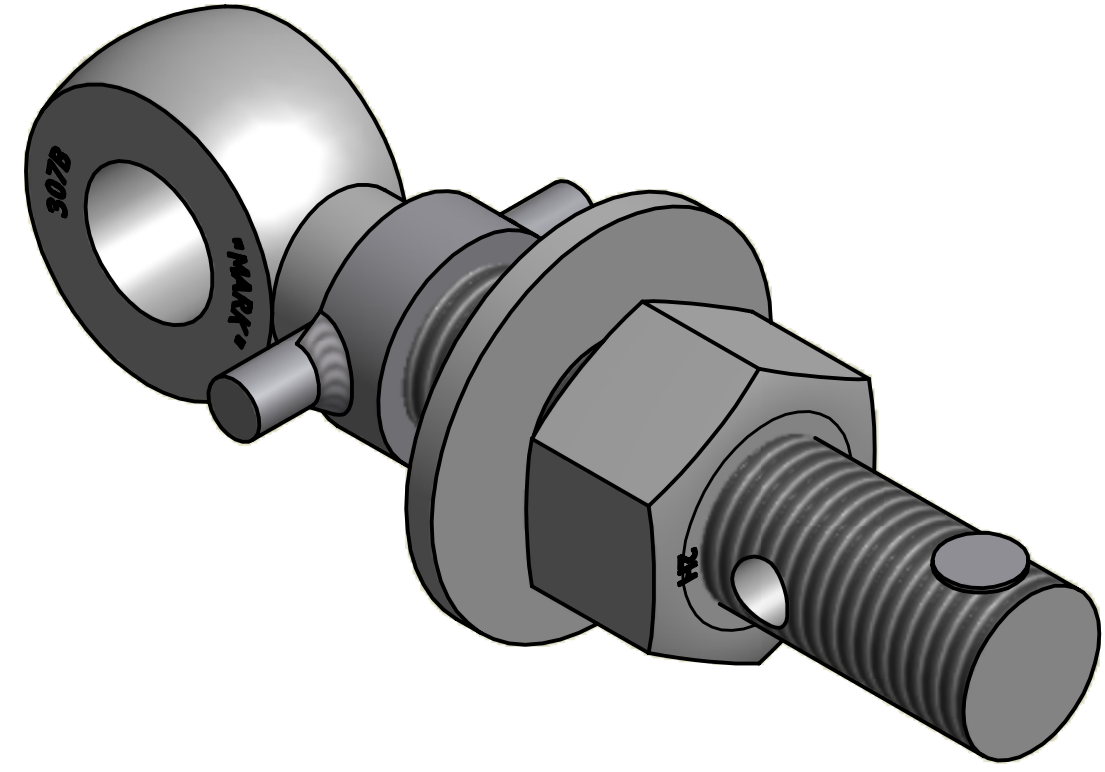
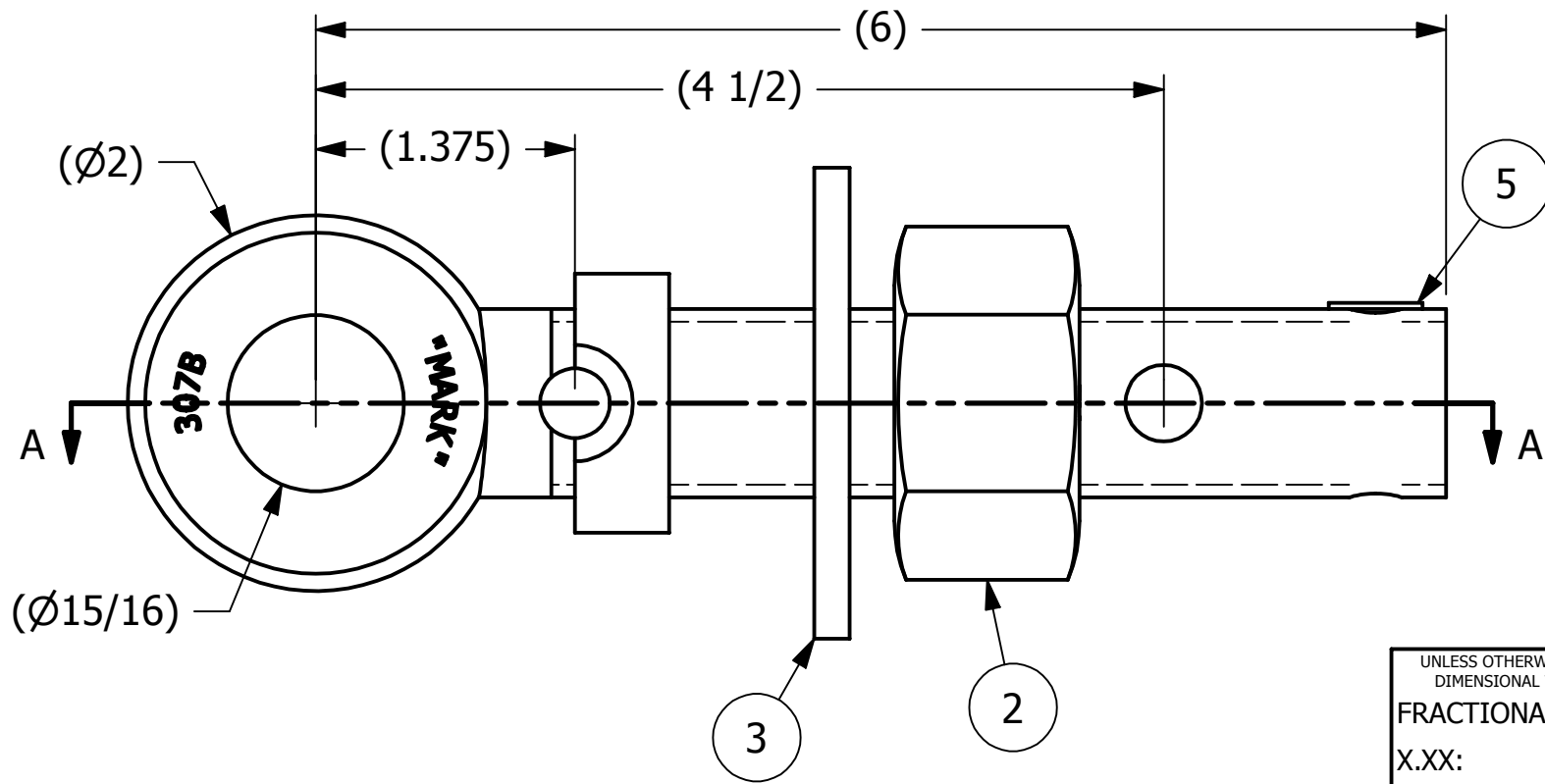


SECTION A-A

NO.	PART NAME	PART#	REQ'D	MATERIAL
1	EYEBOLT 1"X6"	EBR16HFTR	1	CARBON STEEL
2	HEAVY HEX NUT 1"-8	N1X	1	CARBON STEEL
3	FLAT WASHER 1"	WASH1P	1	CARBON STEEL
4	COLLAR 1"	COLLAR1S4TP	1	304 SS
5	HUCK RIVET 1/4"X13/16"	A16204	1	304 SS



ISOMETRIC VIEW



UNLESS OTHERWISE SPECIFIED
DIMENSIONAL TOLERANCES

FRACTIONAL:	±1/16
X.XX:	±.03
X.XXX:	±.015
ANGULAR:	±1°

DEBURR ALL SHARP EDGES.
ALL MACHINED SURFACES TO
HAVE A 125 RMS FINISH UNLESS
NOTED OTHERWISE.

THIRD ANGLE PROJECTION

DRAWN BY:	CHL
CHECKED BY:	VD
PROTOTYPE BY:	CHL
PROTOTYPE DATE:	4/29/2010
APPROVED FOR PRODUCTION BY:	VD
PRODUCTION DATE:	6/30/2010

A	CHL	6-30-10	NEW PART ADDED TO SYSTEM
REV	BY	DATE	DESCRIPTION
PART NAME: EYEBOLT ASSEMBLY 1"X6"			
MATERIAL: SEE BOM			
PROJECT #: 100427		SHEET #: 1 OF 1	SCALE: 1:1
DRAWING #: B28611		PART #: EB16XHATCP	

THIS PRINT, PROPERTY OF SALCO PRODUCTS INC., CONTAINS PROPRIETARY INFORMATION AND MUST NOT BE COPIED, REPRODUCED, OR USED DETRIMENTALLY TO OUR INTEREST.