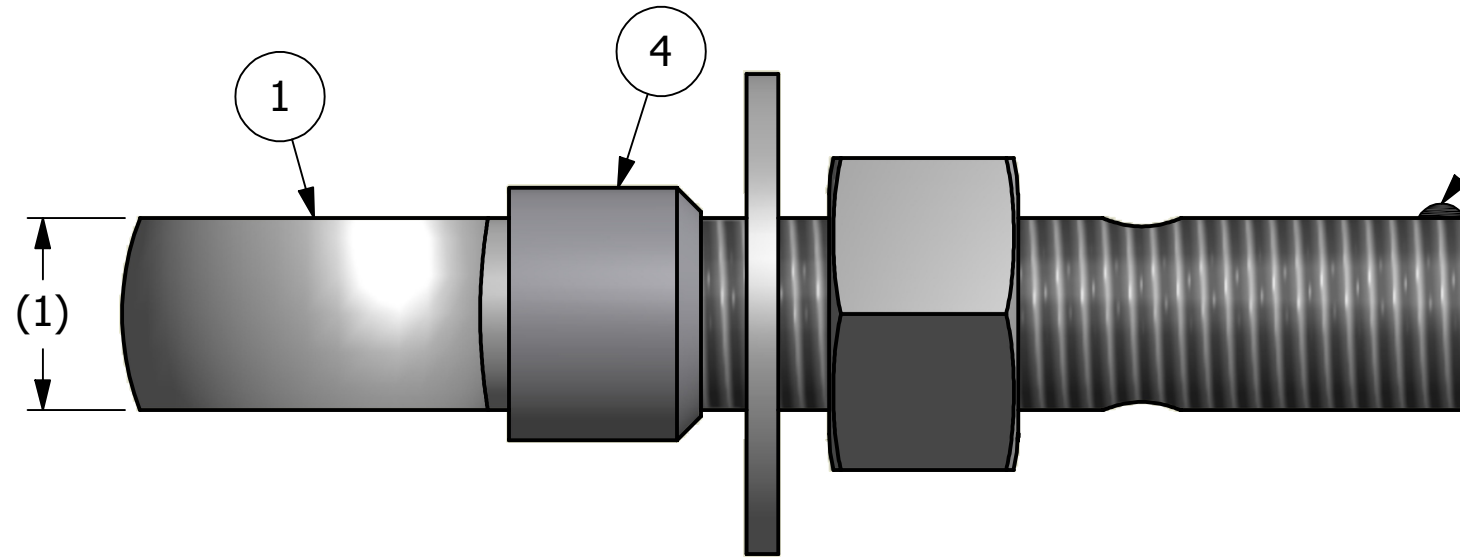
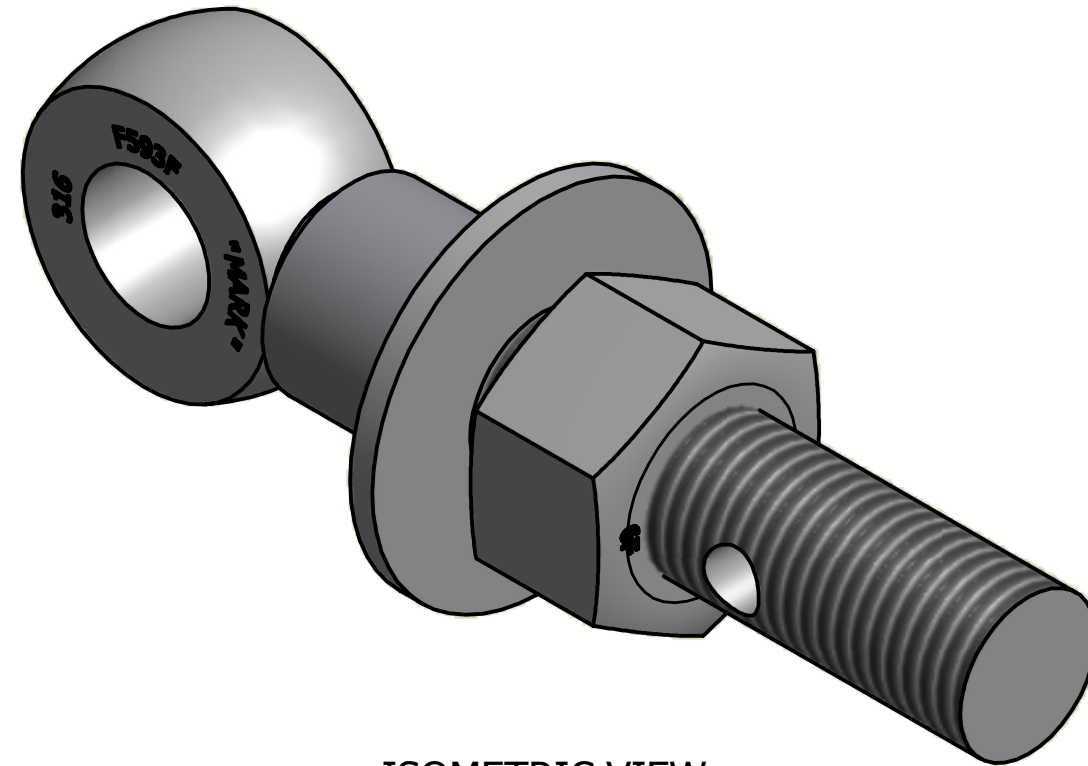


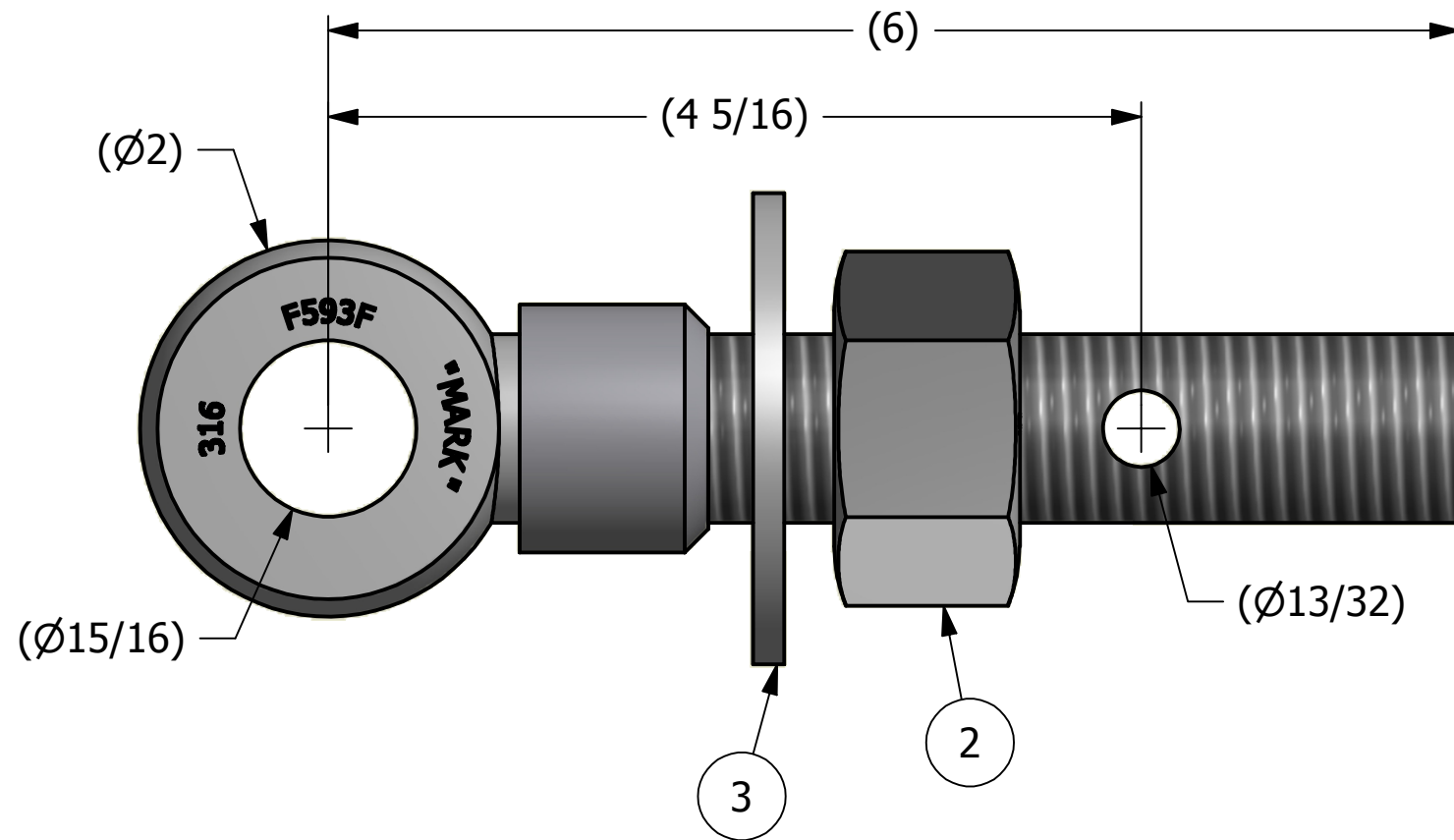
NO.	PART NAME	PART #	REQ'D	MATERIAL
1	EYEBOLT 1"X6"	EBR16HS6	1	316SS
2	HEAVY HEX NUT 1"-8	N1XS6	1	416 SS
3	FLAT WASHER 1" USS	WASH1S6	1	316 SS
4	EYEBOLT SAFETY COLLAR 1"	COLLAR13S4	1	304 SS



APPLY A BEAD OF WELD TO THE TWO END THREADS AFTER INSTALLING WASHER, NUT & COLLAR



ISOMETRIC VIEW



A	CHL	6-22-09	NEW PART ADDED TO SYSTEM
REV	BY	DATE	DESCRIPTION

UNLESS OTHERWISE SPECIFIED DIMENSIONAL TOLERANCES	DRAWN BY:	CHL
FRACTIONAL: ±1/16	CHECKED BY:	VD
X.XX: ±.03	PROTOTYPE BY:	CHL
X.XXX: ±.015	PROTOTYPE DATE:	5/27/2009
ANGULAR: ±1°	APPROVED FOR PRODUCTION BY:	VD
THIS PRINT, PROPERTY OF SALCO PRODUCTS INC., CONTAINS PROPRIETARY INFORMATION AND MUST NOT BE COPIED, REPRODUCED, OR USED DETRIMENTALLY TO OUR INTEREST.	PRODUCTION DATE:	6/22/2009
THIRD ANGLE PROJECTION		

SALCO PRODUCTS, INC.		
PART NAME: EYEBOLT ASSEMBLY 1"X6"		
MATERIAL: SEE BOM		
PROJECT #: WAG0684	SHEET #: 1 OF 1	SCALE: 1:1
DRAWING #: B26955	PART #: EB16XHAS6C	