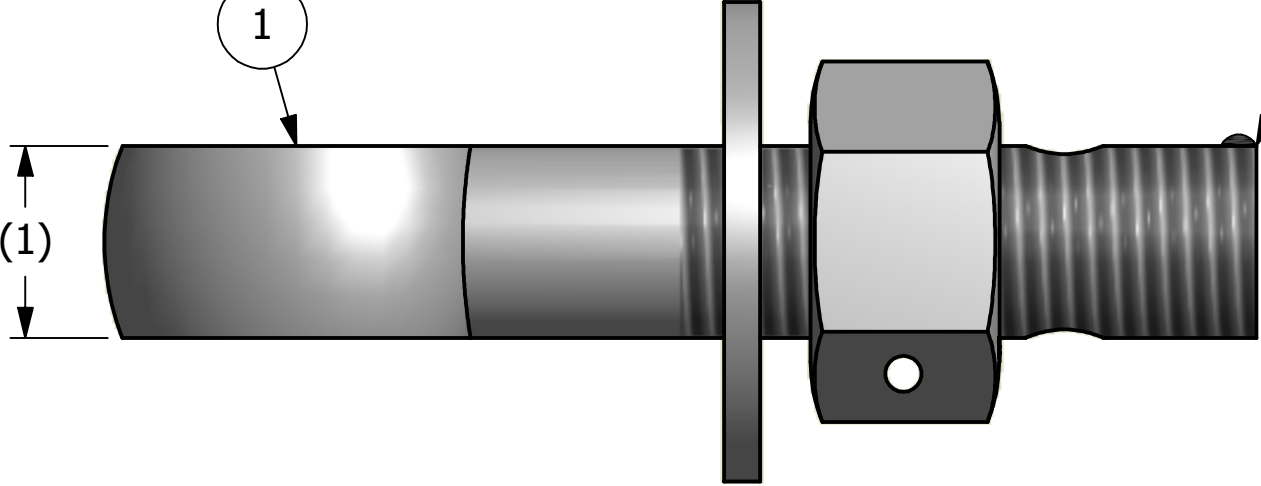
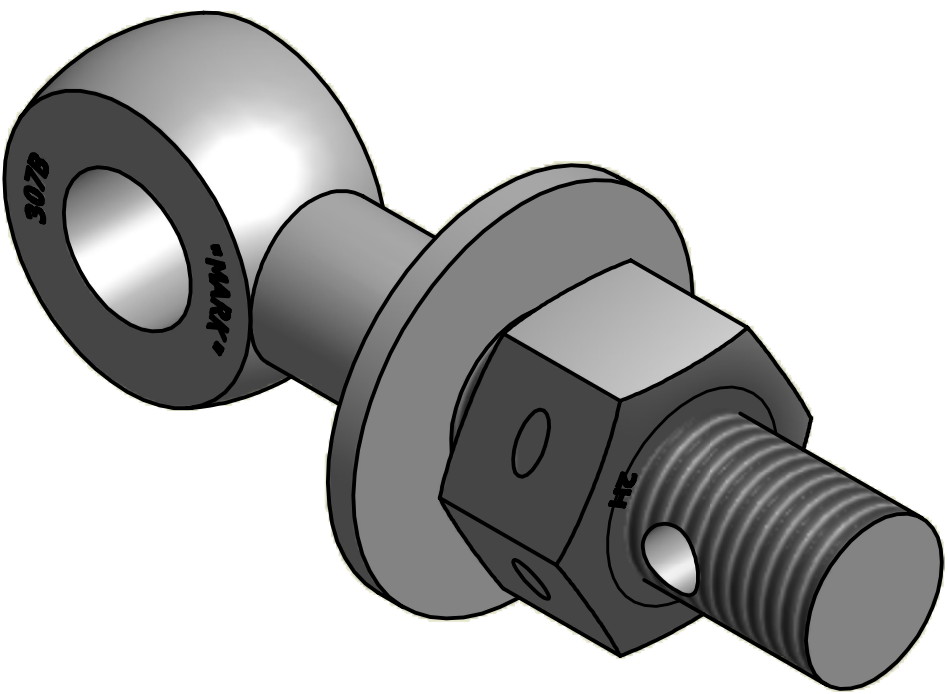


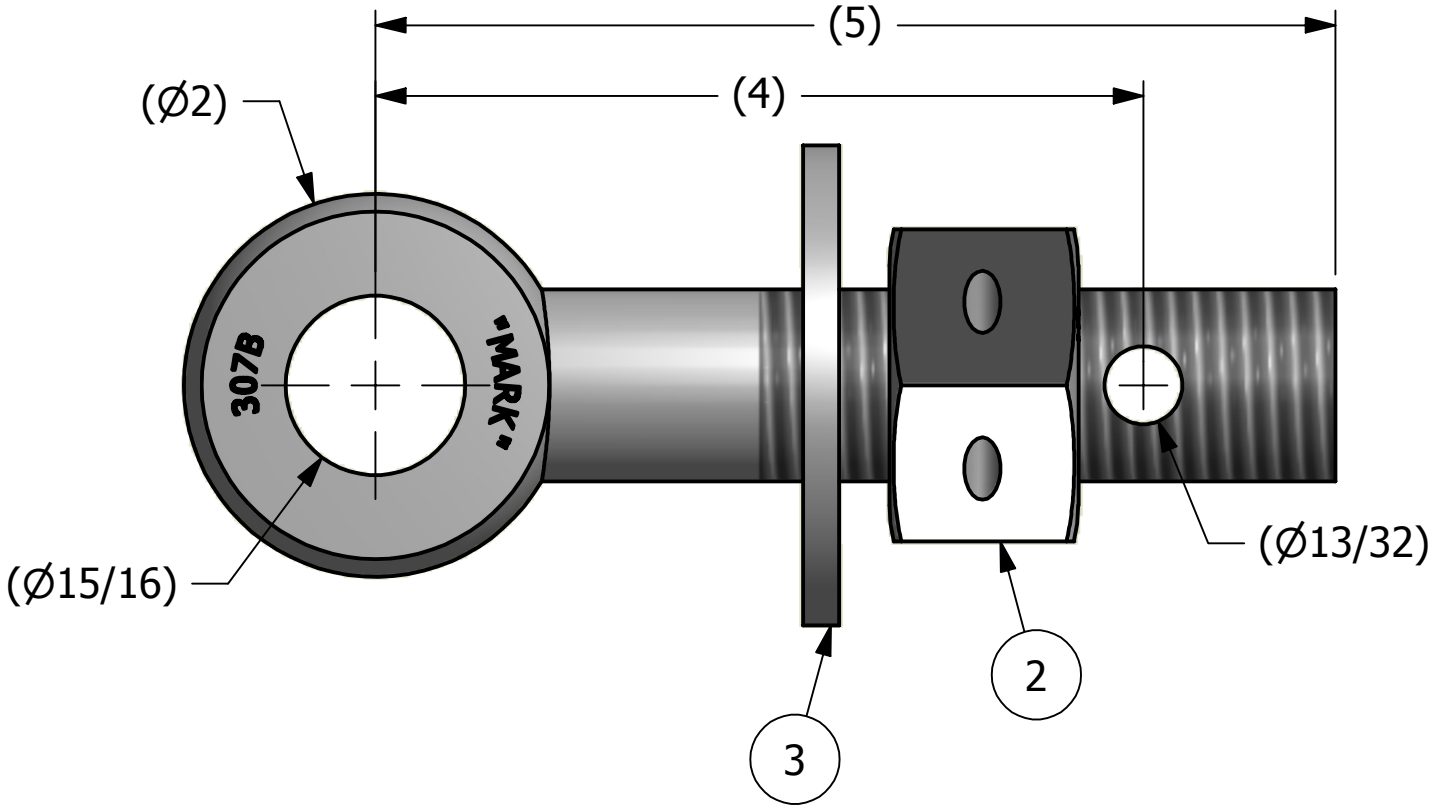
NO.	PART NAME	PART #	REQ'D	MATERIAL
1	EYEBOLT 1"X5"	EBR15H	1	CARBON STEEL
2	HEAVY HEX NUT 1"-8	N1XH	1	CARBON STEEL
3	FLAT WASHER 1"	WASH1P	1	CARBON STEEL



APPLY A BEAD OF WELD TO THE TWO END
THREADS AFTER INSTALLING WASHER AND NUT




ISOMETRIC VIEW



B	CHL	5-14-12	CHANGED EYEBOLT MATERIAL
A	CHL	4-24-01	REPLACED WASH1 WITH WASH1P
REV	BY	DATE	DESCRIPTION

UNLESS OTHERWISE SPECIFIED DIMENSIONAL TOLERANCES	DRAWN BY:	CHL
FRACTIONAL: $\pm 1/16$	CHECKED BY:	SAB
X.XX: $\pm .03$	PROTOTYPE BY:	CHL
X.XXX: $\pm .015$	PROTOTYPE DATE:	3/8/2001
ANGULAR: $\pm 1^\circ$	APPROVED FOR PRODUCTION BY:	SAB
THIS PRINT, PROPERTY OF SALCO PRODUCTS INC., CONTAINS PROPRIETARY INFORMATION AND MUST NOT BE COPIED, REPRODUCED, OR USED DETRIMENTALLY TO OUR INTEREST.	PRODUCTION DATE:	3/8/2001
THIRD ANGLE PROJECTION		

 SALCO PRODUCTS, INC.		
PART NAME: EYEBOLT ASSEMBLY 1"X5"		
MATERIAL: SEE BOM		
PROJECT #:	001127	SHEET #: 1 OF 1
DRAWING #:	B15539	PART #: EB15XHHA