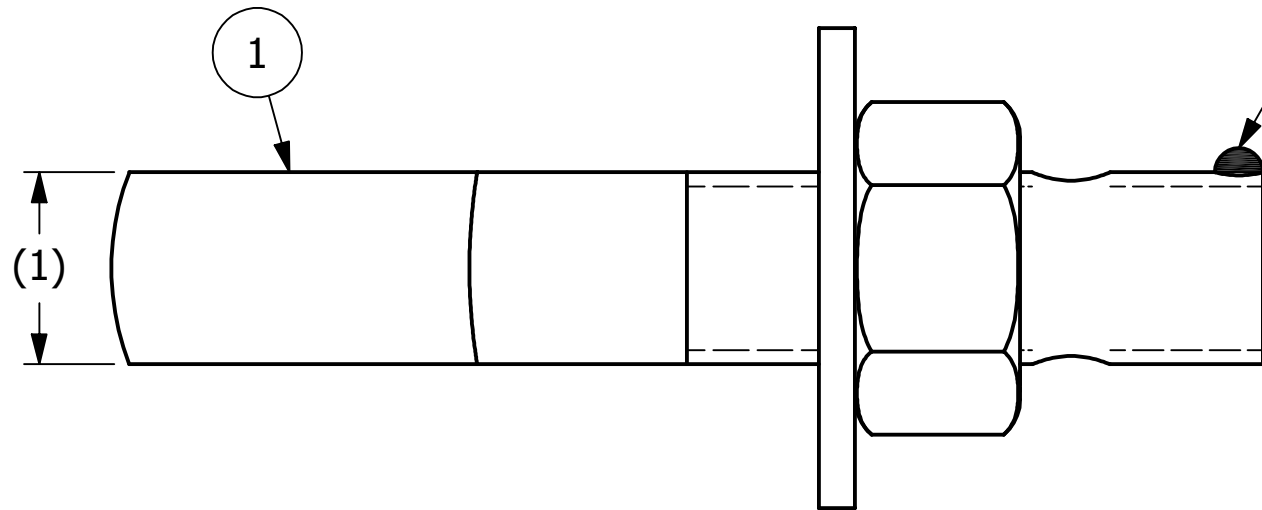
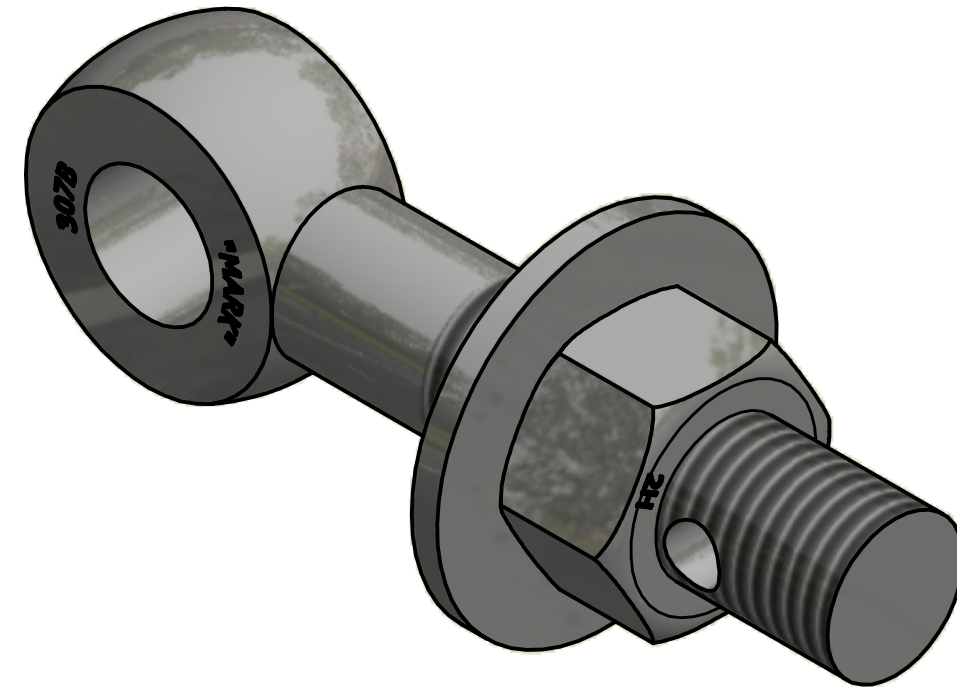


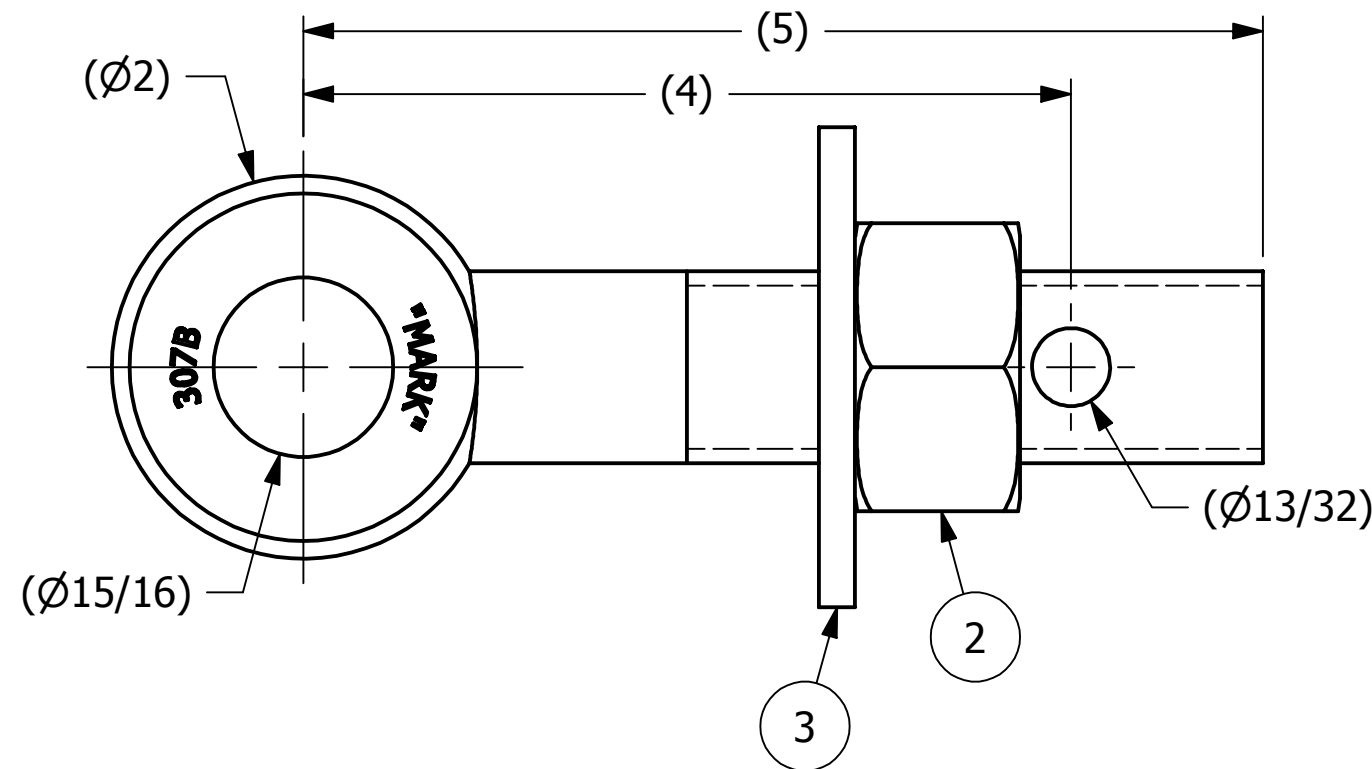
NO	PART NAME	PART#	REQ'D	MATERIAL
1	EYEBOLT 1"X5"	EBR15H	1	CS
2	HEX NUT 1"-8	N1X2	1	CS
3	FLAT WASHER 1"	WASH1P	1	CS



APPLY A BEAD OF WELD TO THE TWO END  
THREADS AFTER INSTALLING WASHER AND NUT



ISOMETRIC VIEW



NOTE:  
N1X2 DOES NOT REQUIRE MARKING

REV	BY	DATE	DESCRIPTION
C	WEB	12-15-17	ADDED NOTE
B	CHL	8-21-13	UPDATED MATERIAL FOR EBR15H
A	CHL	4-25-01	REPLACED WASH1 W/WASH1P

UNLESS OTHERWISE SPECIFIED DIMENSIONAL TOLERANCES	DRAWN BY:	FOD
FRACTIONAL: ±1/16	CHECKED BY:	SAB
X.XX: ±.03	PROTOTYPE BY:	FOD
X.XXX: ±.015	PROTOTYPE DATE:	5/10/1999
ANGULAR: ±1°	APPROVED FOR PRODUCTION BY:	SAB
DEBURR ALL SHARP EDGES. ALL MACHINED SURFACES TO HAVE A 125 RMS FINISH UNLESS NOTED OTHERWISE.	PRODUCTION DATE:	5/10/1999
THIRD ANGLE PROJECTION		

**SALCO PRODUCTS, INC.**

PART NAME: EYEBOLT ASSEMBLY 1"X5"

MATERIAL: SEE BOM

PROJECT #: SHEET #: 1 OF 1 SCALE: 1:1

DRAWING #: **B13421** PART #: **EB15XHA2**