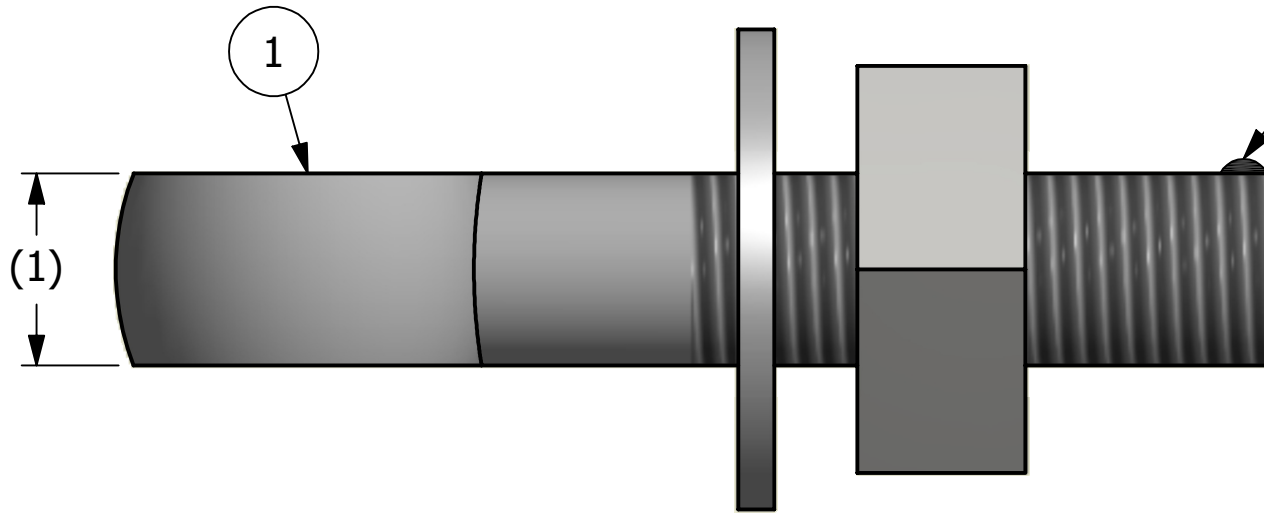
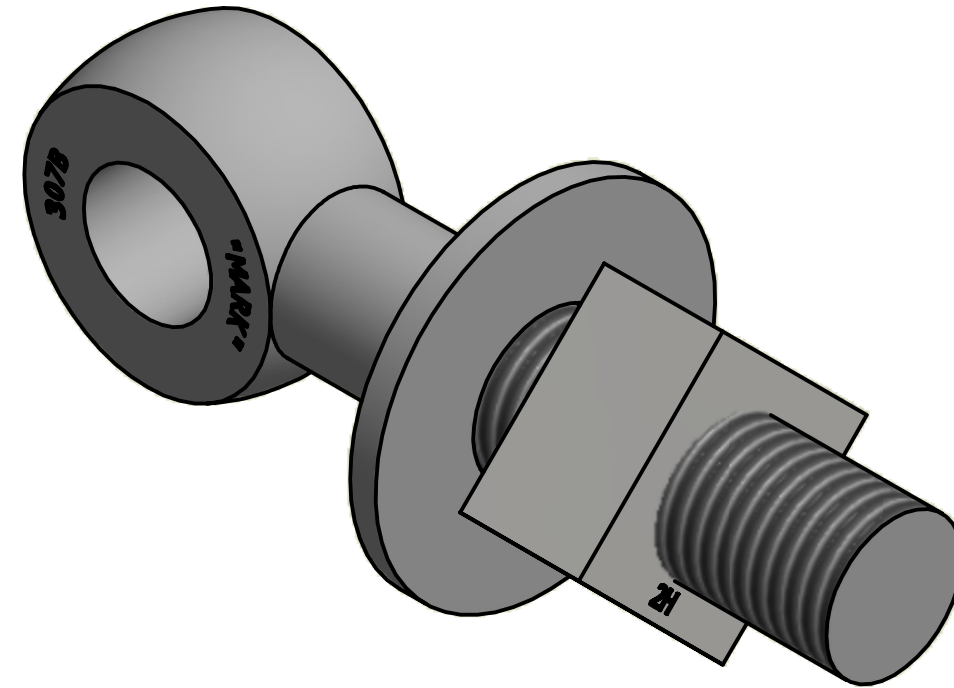


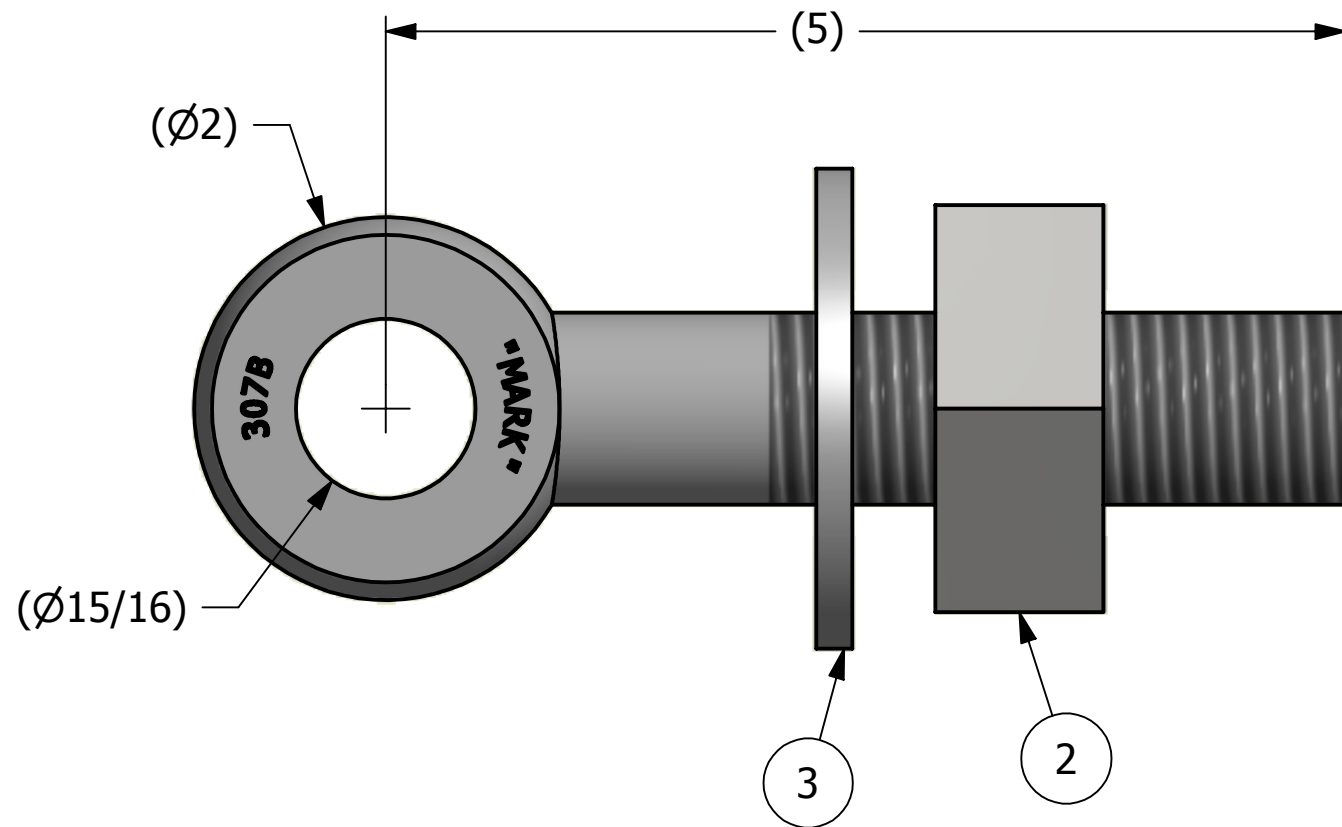
NO.	PART NAME	PART#	REQ'D	MATERIAL
1	EYEBOLT 1"X5"	EBR15	1	CARBON STEEL
2	SQUARE NUT 1"-8	N1SQ2	1	CARBON STEEL
3	FLAT WASHER 1"	WASH1P	1	CARBON STEEL



APPLY A BEAD OF WELD TO THE TWO END THREADS AFTER INSTALLING WASHER AND NUT



ISOMETRIC VIEW



REV	BY	DATE	DESCRIPTION
B	CHL	1-19-09	CHANGED EYEBOLT MATERIAL
A	CHL	12-19-05	NEW PART ADDED TO SYSTEM

<small>UNLESS OTHERWISE SPECIFIED DIMENSIONAL TOLERANCES</small> FRACTIONAL: ±1/16 X.XX: ±.03 X.XXX: ±.015 ANGULAR: ±1° <small>DEBURR ALL SHARP EDGES. ALL MACHINED SURFACES TO HAVE A 125 RMS FINISH UNLESS NOTED OTHERWISE.</small>	DRAWN BY:	CHL
	CHECKED BY:	ACC
	PROTOTYPE BY:	CHL
	PROTOTYPE DATE:	8/8/2005
<small>THIRD ANGLE PROJECTION</small> 	APPROVED FOR PRODUCTION BY:	ACC
	PRODUCTION DATE:	12/19/2005

PART NAME: EYEBOLT ASSEMBLY 1"X5"		
MATERIAL: SEE BOM		
PROJECT #: WAG0269	SHEET #: 1 OF 1	SCALE: 1:1
DRAWING #: B20891	PART #: EB15A2	