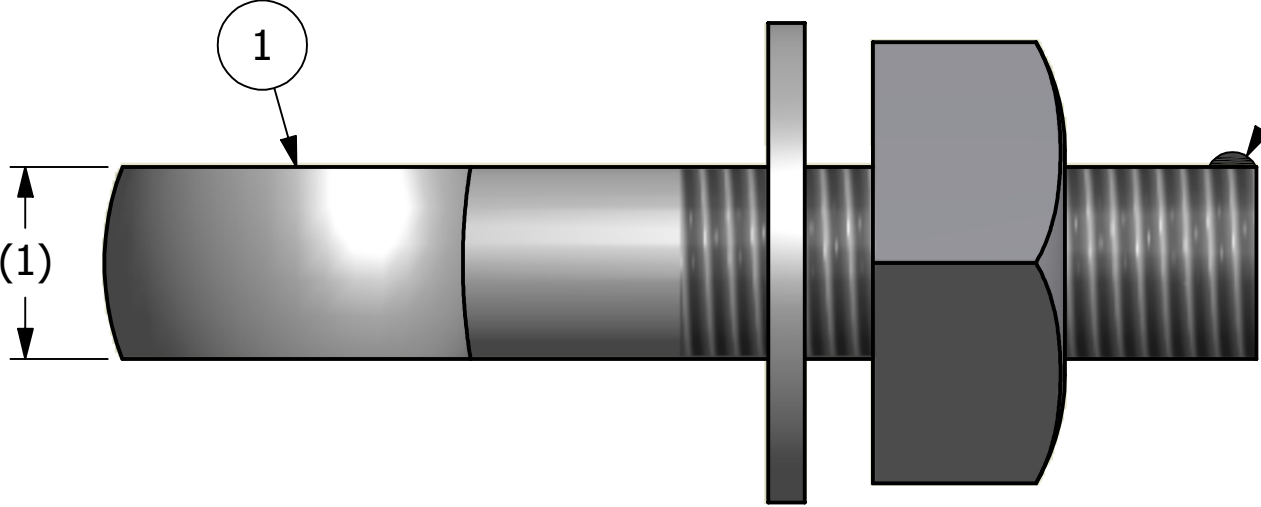
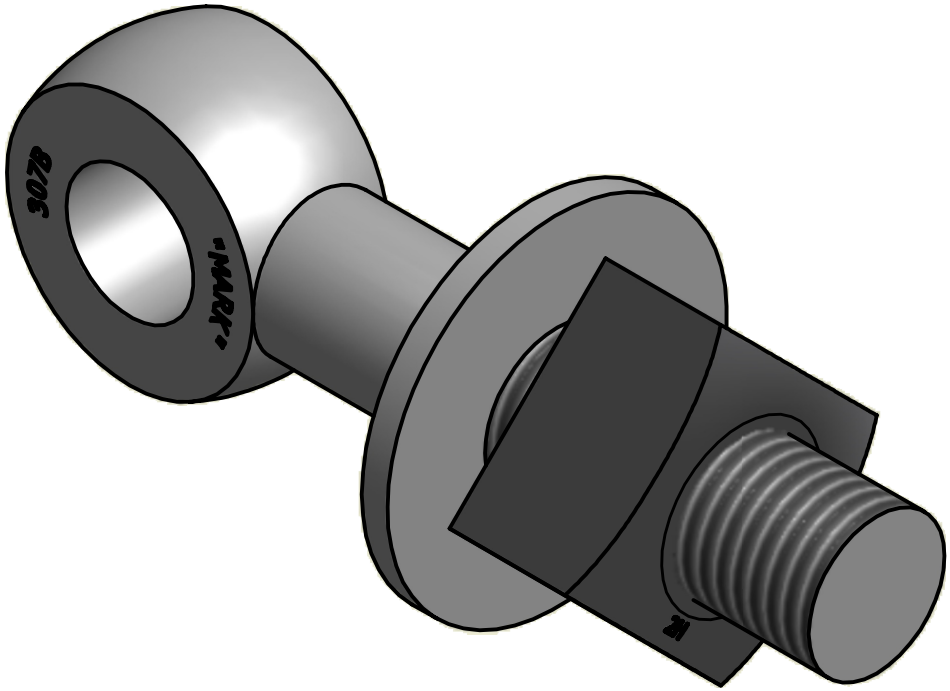


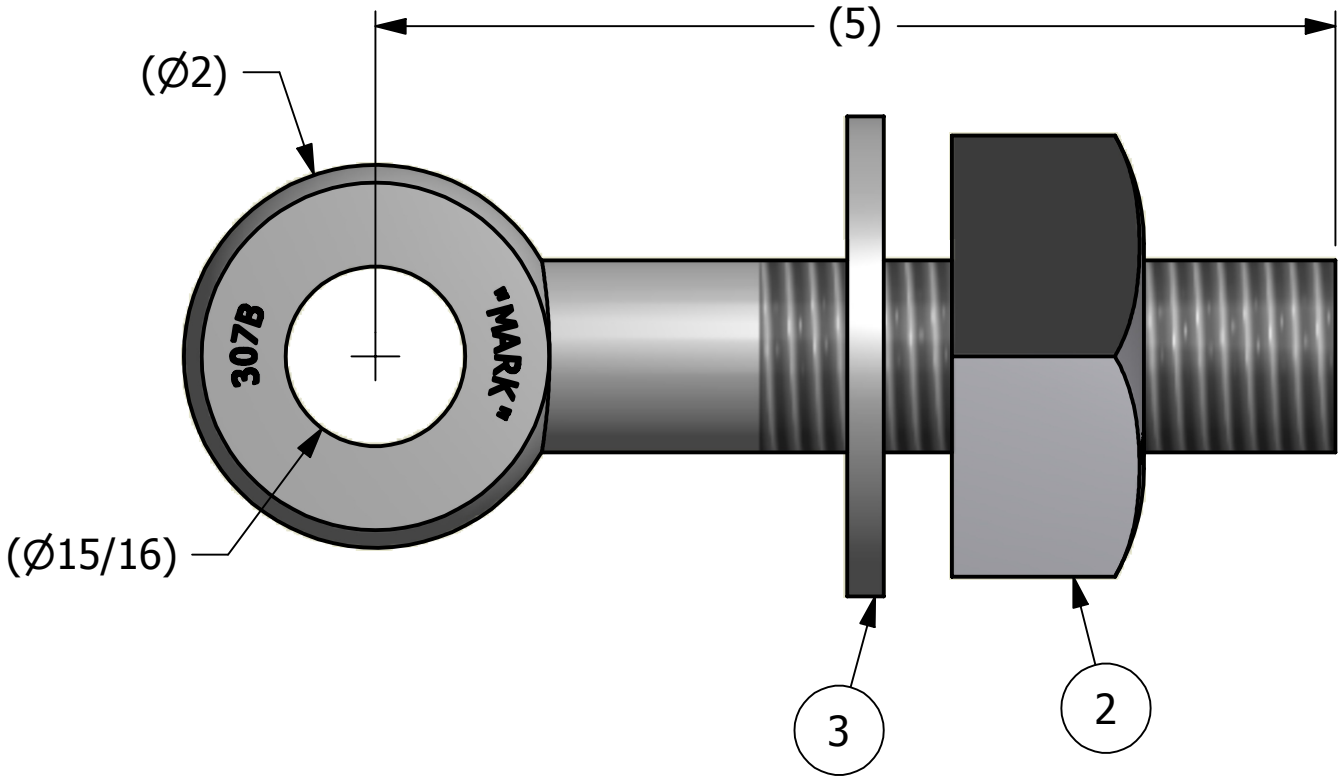
NO.	PART NAME	PART #	REQ'D	MATERIAL
1	EYEBOLT 1"X5"	EBR15	1	CARBON STEEL
2	HEAVY SQUARE NUT 1"-8	N1	1	CARBON STEEL
3	FLAT WASHER 1"	WASH1P	1	CARBON STEEL




APPLY A BEAD OF WELD TO THE TWO END
THREADS AFTER INSTALLING WASHER AND NUT



ISOMETRIC VIEW



A	CHL	1-19-09	CHANGED EYEBOLT MATERIAL
REV	BY	DATE	DESCRIPTION
 SALCO PRODUCTS, INC.			
PART NAME: EYEBOLT ASSEMBLY 1"X5"			
MATERIAL: SEE BOM			
PROJECT #:		SHEET #: 1 OF 1	SCALE: 1:1
DRAWING #: B15696		PART #: EB15A	

UNLESS OTHERWISE SPECIFIED DIMENSIONAL TOLERANCES FRACTIONAL: ±1/16 X.XX: ±.03 X.XXX: ±.015 ANGULAR: ±1° DEBURR ALL SHARP EDGES. ALL MACHINED SURFACES TO HAVE A 125 RMS FINISH UNLESS NOTED OTHERWISE. THIRD ANGLE PROJECTION	DRAWN BY:	CHL
	CHECKED BY:	SAB
	PROTOTYPE BY:	CHL
	PROTOTYPE DATE:	4/24/2001
	APPROVED FOR PRODUCTION BY:	SAB
	PRODUCTION DATE:	4/24/2001

THIS PRINT, PROPERTY OF SALCO PRODUCTS INC., CONTAINS PROPRIETARY INFORMATION
AND MUST NOT BE COPIED, REPRODUCED, OR USED DETRIMENTALLY TO OUR INTEREST.