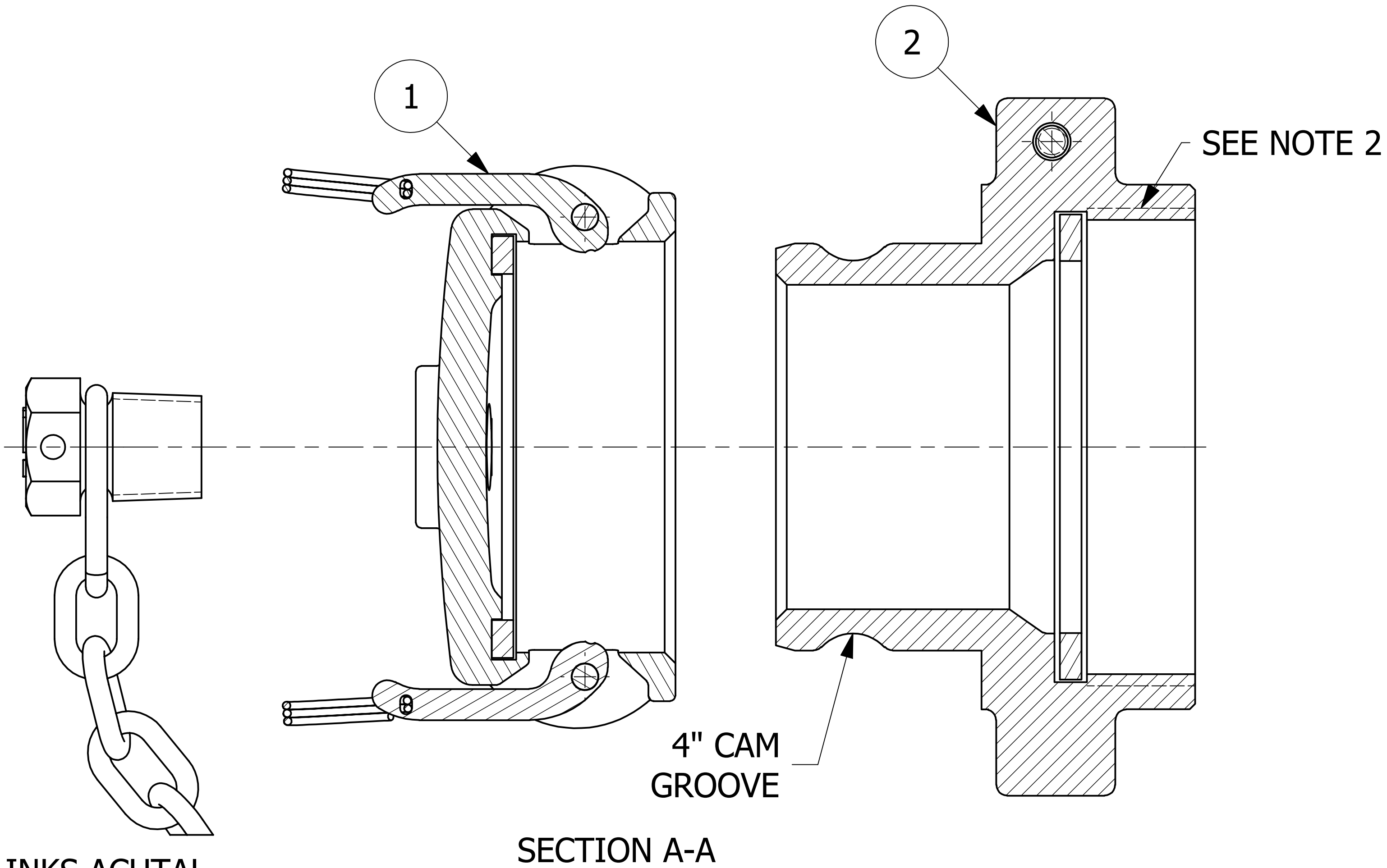
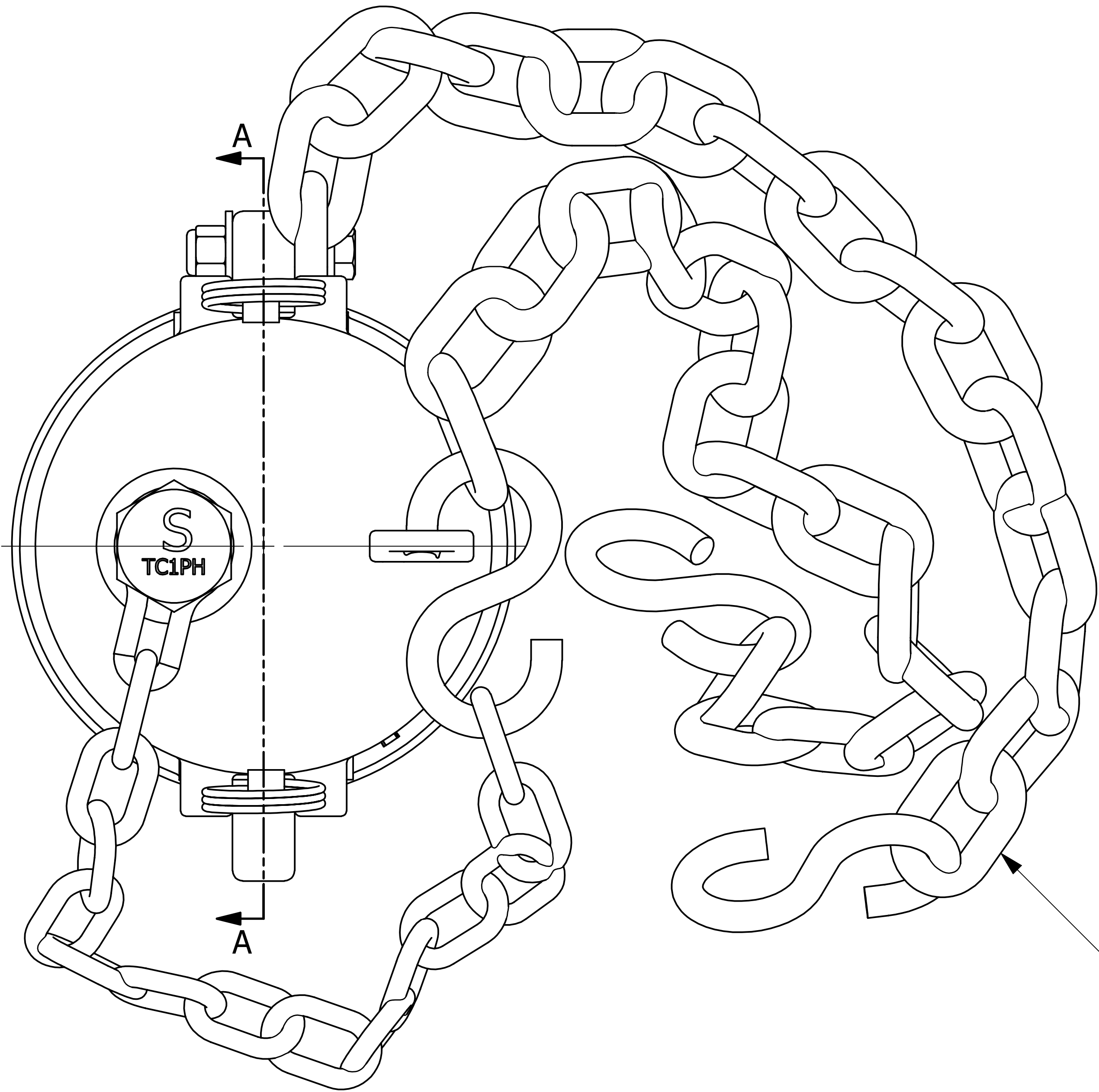



NO.	PART NAME	PART #	REQ'D	MATERIAL
1	QUICK CONNECT CAP 4" KAMMED	K4IDC6A	1	DUCTILE IRON
2	QUICK CONNECT ADAPTER 4" THREAD ON	K4IA6A	1	DUCTILE IRON



- NOTES:
- 1. APPROXIMATE HEIGHT = 6 1/2"
 - 2. 5 1/4"-4 UN-2B THREADS CONFORM TO ANSI B1.1 STANDARD AND FIGURE E18 FROM AAR TANK CAR MANUAL.
 - 3. AAR APPROVAL# E-139514.
 - 4. THIS ASSEMBLY IS NOT DOT APPROVED AND CAN BE USED ONLY ON AAR STENCILED CARS.
 - 5. QUICK DISCONNECT MEETS A-A-59326D.
 - 6. CASTINGS ARE DUCTILE IRON (FERRITIZED/ANNEALED) AND MEETS ASTM A395 GRADE 60-40-18 REQUIREMENTS.
 - 7. GASKETS ARE BLACK VITON A.
 - 8. SPRAY WITH USDA APPROVED WHITE MINERAL OIL OR VEGETABLE OIL AS A RUST INHIBITOR.

UNLESS OTHERWISE SPECIFIED DIMENSIONAL TOLERANCES FRACTIONAL: ±1/16 X.XX: ±.03 X.XXX: ±.015 ANGULAR: ±1° DEBurr ALL SHARP EDGES. ALL MACHINED SURFACES TO HAVE A 125 RMS FINISH UNLESS NOTED OTHERWISE. THIRD ANGLE PROJECTION	DRAWN BY:	CHL
	CHECKED BY:	VD
	PROTOTYPE BY:	CHL
	PROTOTYPE DATE:	1/12/2010
	APPROVED FOR PRODUCTION BY:	VD
	PRODUCTION DATE:	1/12/2010

B	RJP	10-31-13	AAR APPROVAL # WAS E-039015, MIL SPEC WAS MIL-C-27487G	
A	RJP	10-17-13	RELEASED DRAWING TO NETWORK	
REV	BY	DATE	DESCRIPTION	
<div><div></div><div>SALCO PRODUCTS, INC.</div></div>				
PART NAME: QUICK CONNECT 4" THREAD ON				
MATERIAL: SEE BOM				
PROJECT #:		WAG0761		SHEET #:
		1 OF 1		SCALE:
				1:1
DRAWING #:			PART #:	
D27975			K4IU6A	