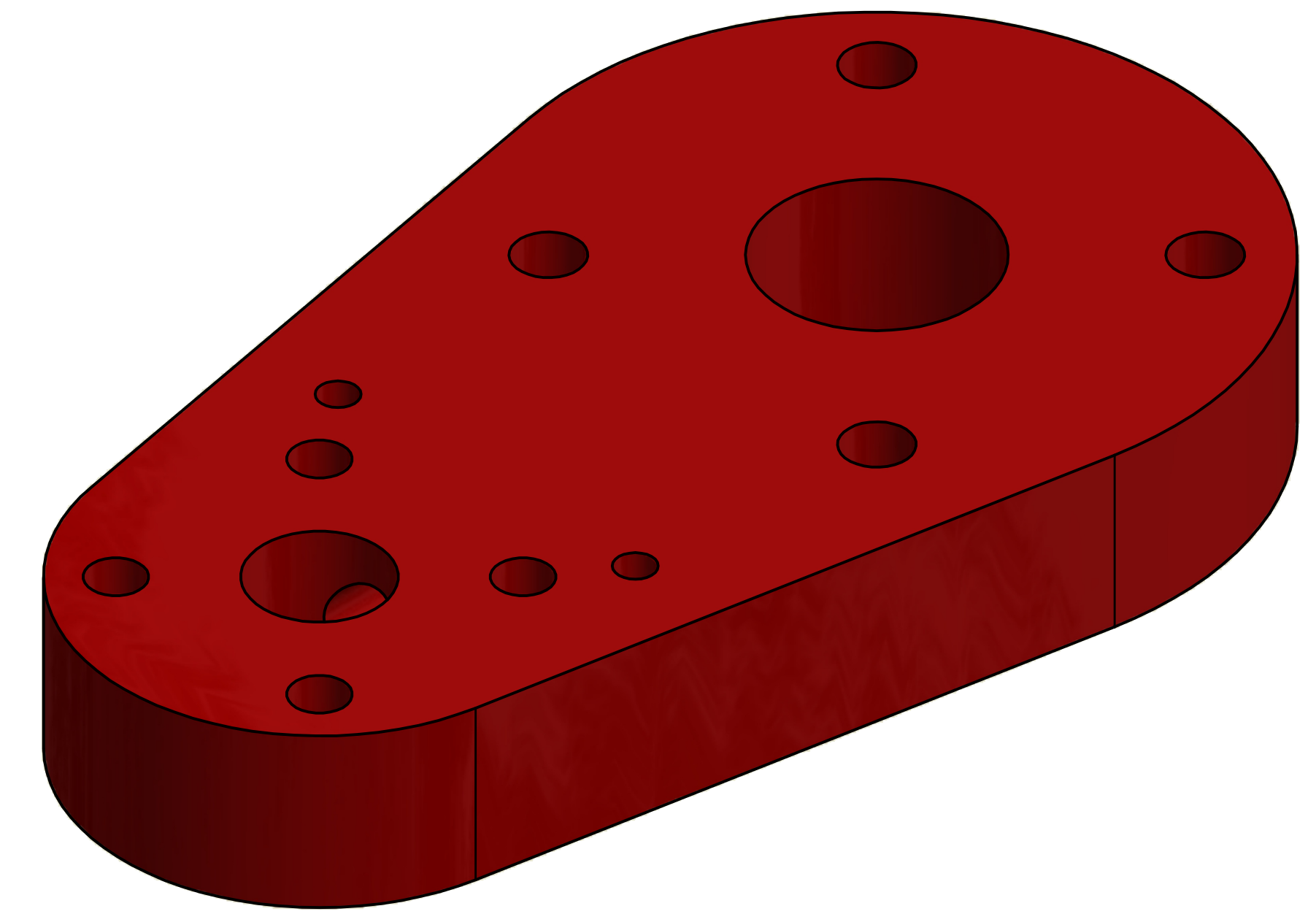
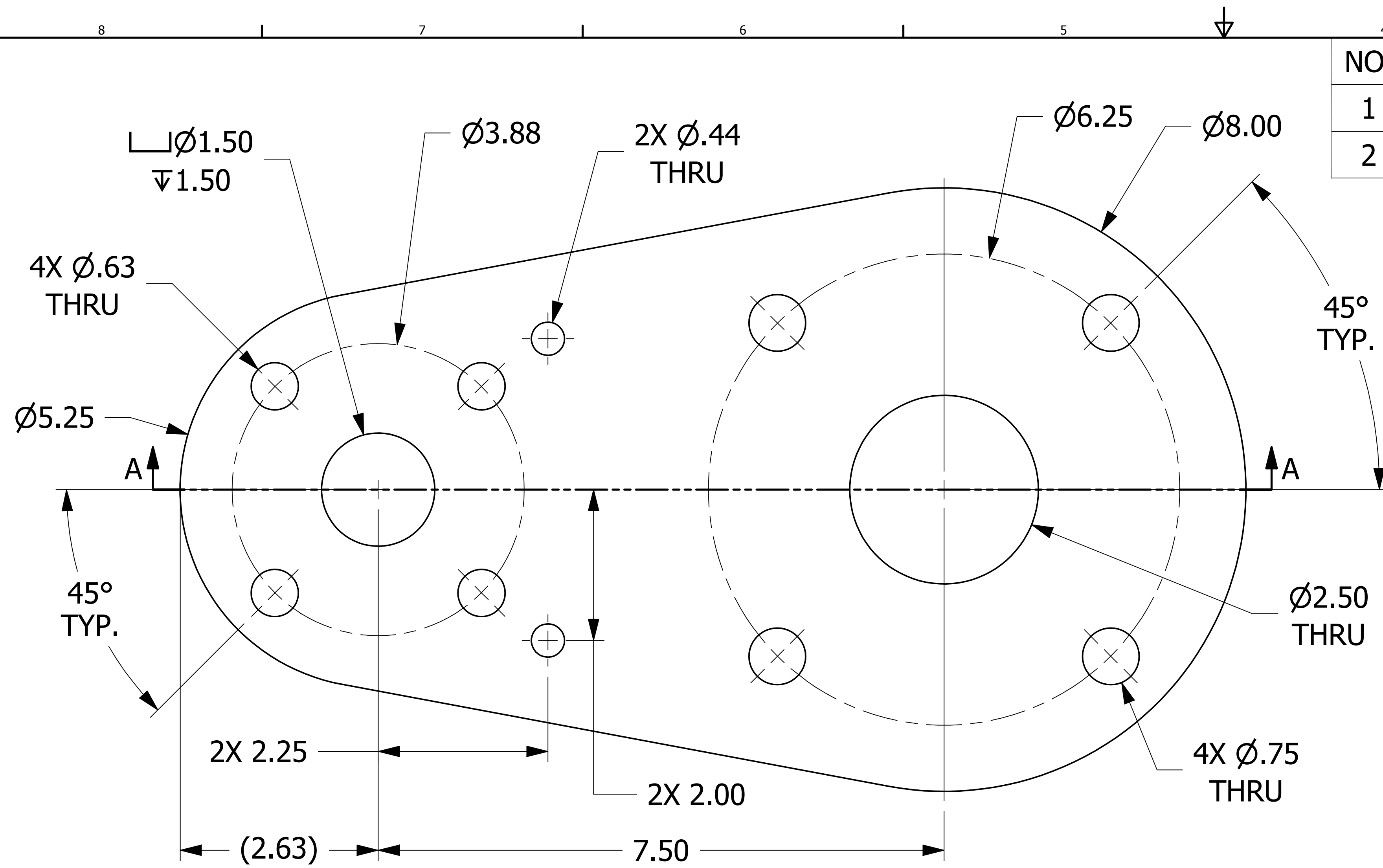
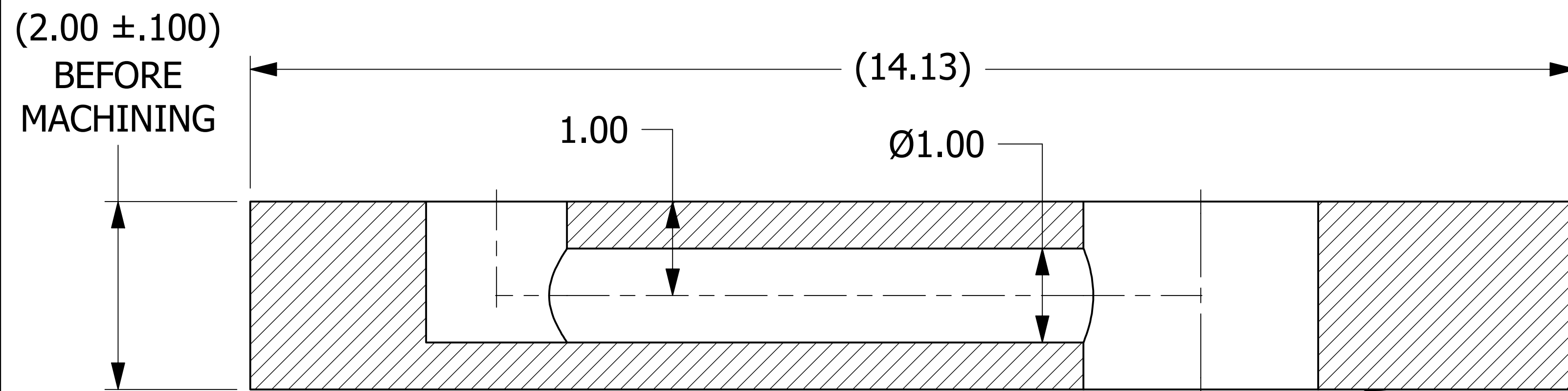


NO.	PART NAME	PART#	REQ'D	MATERIAL
1	SHEET 2"	SHT2UHR	.73 SQ FT	SALCO PE
2	PARALLEL INSTRUMENT TEE PLUG	HSPITPLG7	1	SALCO PE



ISOMETRIC VIEW
SCALE 3:4



MARK PER QAP5A-1
TEXT HEIGHT .1" MIN.

SECTION A-A

SEE NOTE 5
(3 PLACES)

- NOTES:
1. SEE DOCUMENT DSS 1 FOR MATERIAL SPECIFICATIONS.
 2. SEE DOCUMENT QAP5A-1 FOR MARKING PROCEDURES.
 3. SEE DOCUMENT DSS 3 FOR FRICTION WELDING WELDING SPECIFICATIONS.
 4. AAR APPROVAL #E-099017
 5. SEE DOCUMENT DSS 5 FOR SERRATED GASKET SPECIFICATIONS.

C	WEB	6-11-14	ADDED ±.100 TOLERANCE, UPDATED NOTES
B	KHK	1-30-13	UPDATED TO CURRENT DRAFT STANDARDS, BOM, NOTE
A	REH	7-16-10	ADDED PART TO SYSTEM CHANGED DIMS TO 7.50 & 2.25

UNLESS OTHERWISE SPECIFIED DIMENSIONAL TOLERANCES FRACTIONAL: ±1/16 X.XX: ±.03 X.XXX: ±.015 ANGULAR: ±1° DEBURR ALL SHARP EDGES. ALL MACHINED SURFACES TO HAVE A 125 RMS FINISH UNLESS NOTED OTHERWISE. THIRD ANGLE PROJECTION	DRAWN BY:	AJB
	CHECKED BY:	VD
	PROTOTYPE BY:	AJB
	PROTOTYPE DATE:	5/18/2010
	APPROVED FOR PRODUCTION BY:	WRB
	PRODUCTION DATE:	7/16/2010

PART NAME: PARALLEL INSTRUMENT TEE 3" X 1 1/2"		
MATERIAL: SEE NOTE/BOM		
PROJECT #: WAG0832	SHEET #: 1 OF 1	SCALE: 1:1
DRAWING #: D28791	PART #: HSPIT3VX15	