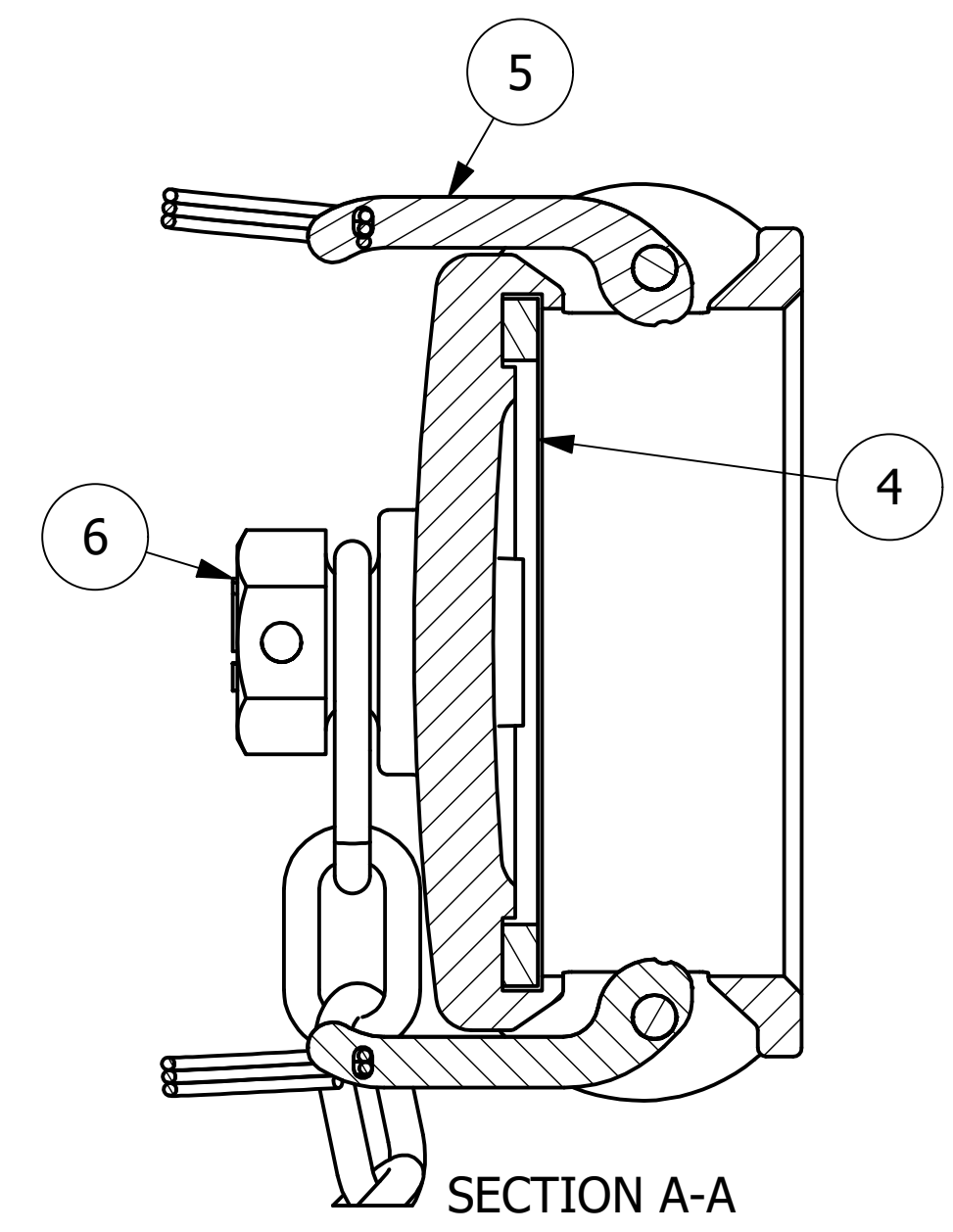


NO.	PART NAME	PART#	REQ'D	MATERIAL
1	QUICK CONNECT CAP 4" CAMMED	K4IDC	1	DUCTILE IRON
2	S-HOOK 3/8"X3 1/2"	SC38SH	2	CS Z/P
3	CHAIN LINKS 3/8"X15	SC4315C	1	AISI 1008 CS
4	DUST CAP GASKET 4"	SSDCG6	1	BLACK VITON A
5	CAM ARMS STRAIGHT	SSKLA	1	304 SS
6	PLUG ASSEMBLY 1"	TC1PAH	1	CARBON STEEL



SECTION A-A

- NOTES:
1. THIS ASSEMBLY IS NOT DOT APPROVED AND CAN BE USED ONLY ON AAR STENCILED CARS.
 2. QUICK DISCONNECT MEETS A-A-59326D.
 3. DUST CAP IS DUCTILE IRON (FERRITIZED/ANNEALED) AND MEETS ASTM A395 GRADE 60-40-18 REQUIREMENTS.
 4. SPRAY WITH USDA APPROVED WHITE MINERAL OIL OR VEGETABLE OIL AS A RUST INHIBITOR.
 5. AAR APPROVAL # E-232133.

REV	BY	DATE	DESCRIPTION
G	RPS	4/12/24	AAR APPROVAL # WAS E-139514.
F	WEB	4/18/22	REPLACED 16X SC43 W/ SC4315C; UPDATED TITLE BLOCK
E	CHL	5/14/19	CHANGED SSKLA REQUIRED FROM 2 TO 1
D	RJP	10/29/13	AAR APPROVAL # WAS E-019022 MIL SPEC WAS MIL-C-27487G
C	TAJ	6/29/11	AAR APPROVAL # WAS E-039015
B	BRG	2/8/08	PLUG MATERIAL WAS DUCTILE IRON
A	CHL	4/6/04	NEW PART ADDED TO SYSTEM

UNLESS OTHERWISE SPECIFIED DIMENSIONAL TOLERANCES FRACTIONAL: ±1/16 X.XX: ±.03 X.XXX: ±.015 ANGLE: ±1° DEBURR ALL SHARP EDGES. ALL MACHINED SURFACES TO HAVE A 125 RMS FINISH UNLESS NOTED OTHERWISE. THIRD ANGLE PROJECTION	DRAWN BY:	CHL
	CHECKED BY:	ACC
	PROTOTYPE DATE:	3/23/2004
	APPROVED FOR PRODUCTION BY:	
	PRODUCTION DATE:	
	SIZE:	C
DRAWING #:	19054	

SALCO PRODUCTS, INC.

PART NAME:
QUICK CONNECT CAP 4" CAMMED

MATERIAL: **SEE BOM**
 PROJECT #: **WAG0122** SHEET #: **1 OF 1** SCALE: **3:4**

PART #:
K4IDC6A