

NO.	PART NAME	PART#	REQ'D	MATERIAL
1	SPRING 21/32"X2"	A38818	1	18-8 SS
2	STICKER	A41924	1	VINYL
3	ANGLE IRON 1 1/4" X 1 1/4" X 1/4"	B31012	2	CS
4	ANGLE 3" X 3" X 3/8"	B39133	1	CS
5	BOV ADAPTER JAMESBURY	B39388	1	CS
6	LOCKING BRACKET	B40142	1	304 SS
7	HANDLE EXTENSION ASSEMBLY	BOVHECS03	1	CS/SS
8	SAFEGUARD™ BOV DECAL	DBOV2224V01	1	VINYL
9	SPRING PIN 5/16" X 2"	SP74343	1	18-8 SS
10	TAG	TAGSS3	1	304 SS

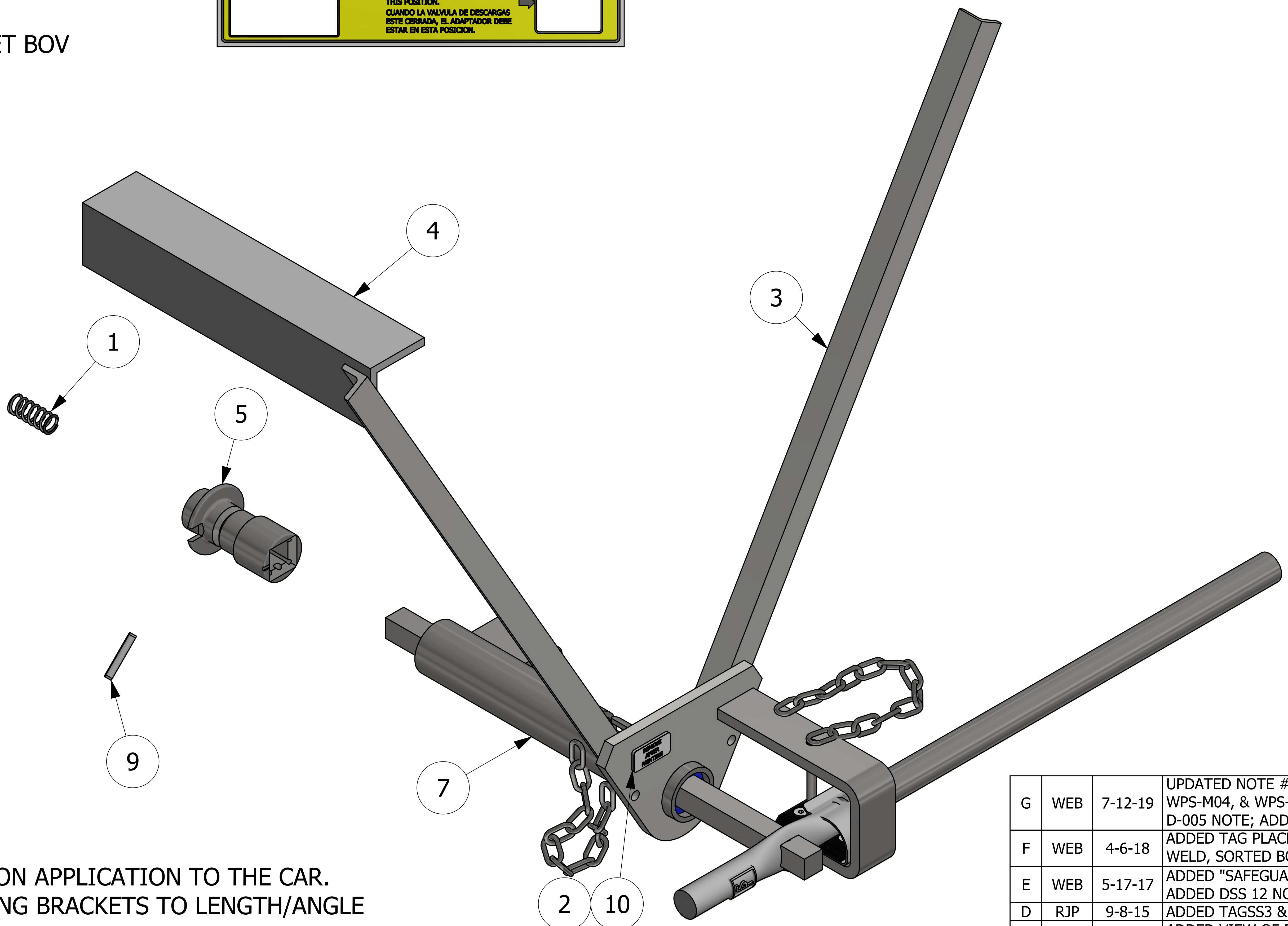
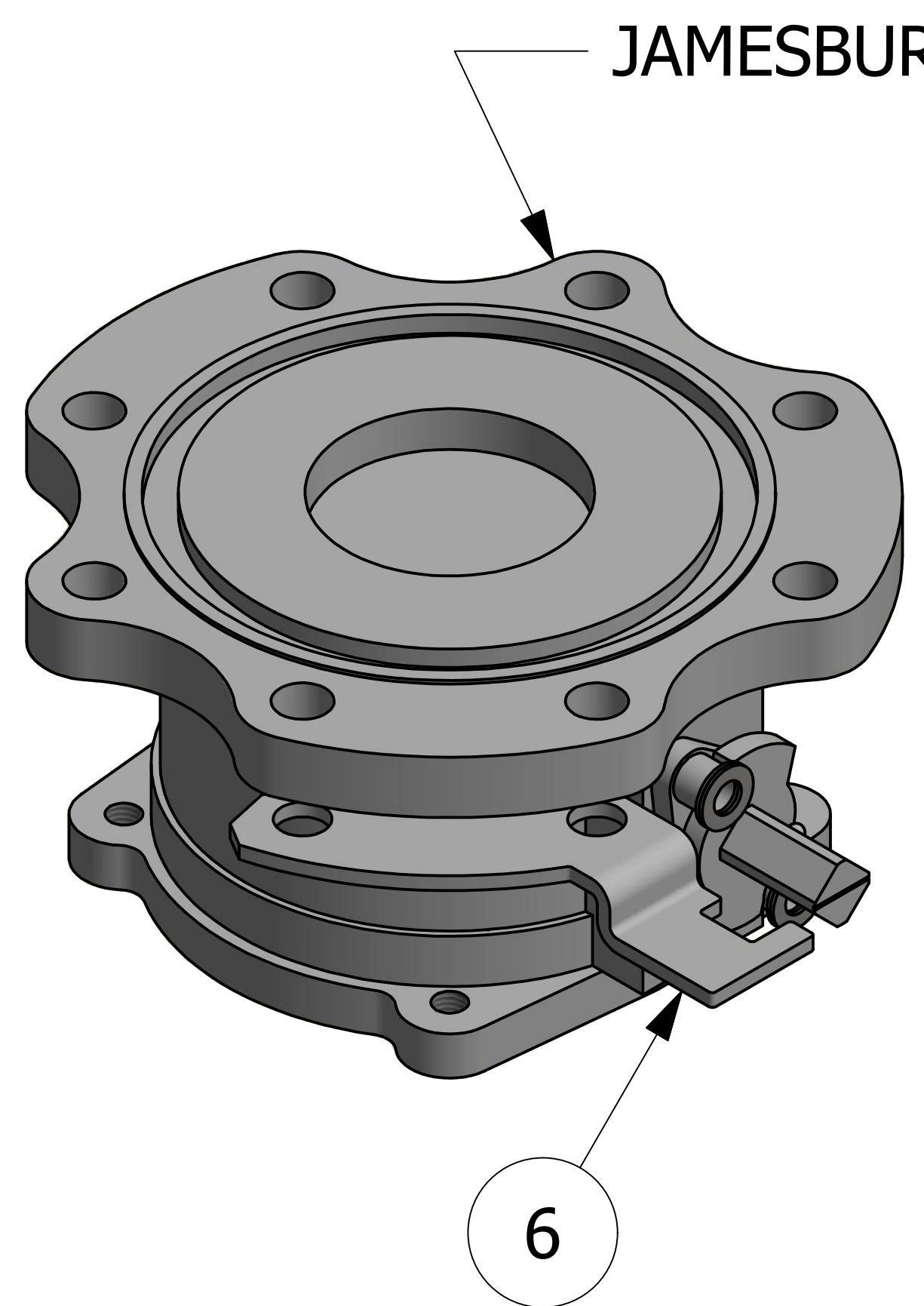
IMPORTANT
SAFEGUARD™ BOTTOM OUTLET
VALVE OPERATING INSTRUCTIONS

TO OPEN, REMOVE SEAL PINS, PUSH THE HANDLE INWARDS WHILE STILL IN CLOSED POSITION AND ROTATE CLOCKWISE.
PARA ABRIR, REMUEVA LOS PASADORES DE SEGURIDAD, EMPUJE LA MANDEA HACIA ADETRON CUANDO ALIN ESTE EN LA POSICION DE CIERRE Y GIRE HACIA LA DERECHA.

TO CLOSE, ROTATE THE HANDLE COUNTER CLOCKWISE AND PULL OUTWARD TO DESENGAGE, REAPPLY SEAL PINS.
PARA CERRAR, GIRE LA MANDEA HACIA LA IZQUIERDA Y EMPUJE HACIA AFUERA PARA DESENGANCHAR, VUELVA A APLICAR LOS PASADORES DE SEGURIDAD.

NOTE:
EQUIPPED WITH 1" SOCKET.
NOTA:
EQUIPADO CON DADO DE 1".

WHEN BOTTOM OUTLET VALVE IS CLOSED THE ADAPTER MUST BE IN THIS POSITION.
CUANDO LA VALVULA DE DESCARGAS ESTE CERRADA, EL ADAPTADOR DEBE ESTAR EN ESTA POSICION.



- NOTES:**
1. VALVE SOLD SEPARATELY.
 2. WELDING OF BRACKETS WILL BE DONE UPON APPLICATION TO THE CAR.
 3. IF REQUIRED, CUSTOMER TO CUT MOUNTING BRACKETS TO LENGTH/ANGLE UPON APPLICATION TO THE CAR.
 4. SEE DOCUMENTS WPS-M03, WPS-M04, & WPS-T05 FOR WELDING PROCEDURES.
 5. WELD ACCEPTANCE CRITERIA TO MEET DOCUMENT D-005.
 6. ENGRAVE TAGSS3 WITH "SAFEGUARD™", "J02", DATE "**/**" (MONTH/YEAR) AND PATENT NO. 10,274,101. TEXT HEIGHT 1/4" MIN.
 7. APPLY A41924 TO TAGSS3 AFTER IT HAS BEEN WELDED ON.
 8. PATENT NO. 10,274,101.

REV	BY	DATE	DESCRIPTION
G	WEB	7-12-19	UPDATED NOTE #2; REPLACED "DSS 12" WITH "WPS-M03, WPS-M04, & WPS-T05" FOR WELD PROCEDURE; ADDED D-005 NOTE; ADDED PATENT NO.
F	WEB	4-6-18	ADDED TAG PLACEMENT DIMENSIONS, ADDED 1/8 TO TAG WELD, SORTED BOM, UPDATED WELD NOTES
E	WEB	5-17-17	ADDED "SAFEGUARD™" TO NOTE 5, UPDATED PART NAME, ADDED DSS 12 NOTE
D	RJP	9-8-15	ADDED TAGSS3 & A41924
C	RJP	7-17-15	ADDED VIEW OF DBOV2224V01, 1.10-1.19 WAS 1.10 REMOVED C39211
B	RJP	1-13-15	UPDATED ADAPTER, 1.00 WAS 1.15
A	JJK	10-20-14	RELEASED FOR PRODUCTION

UNLESS OTHERWISE SPECIFIED DIMENSIONAL TOLERANCES FRACTIONAL: ±1/16	DRAWN BY:	RJP
X.XX: ±.03	CHECKED BY:	CHL
X.XXX: ±.015	PROTOTYPE BY:	RJP
ANGULAR: ±1°	PROTOTYPE DATE:	9/15/2014
DEBURR ALL SHARP EDGES. ALL MACHINED SURFACES TO HAVE A 125 RMS FINISH UNLESS NOTED OTHERWISE.	APPROVED FOR PRODUCTION BY:	VD
THIRD ANGLE PROJECTION	PRODUCTION DATE:	10/20/2014

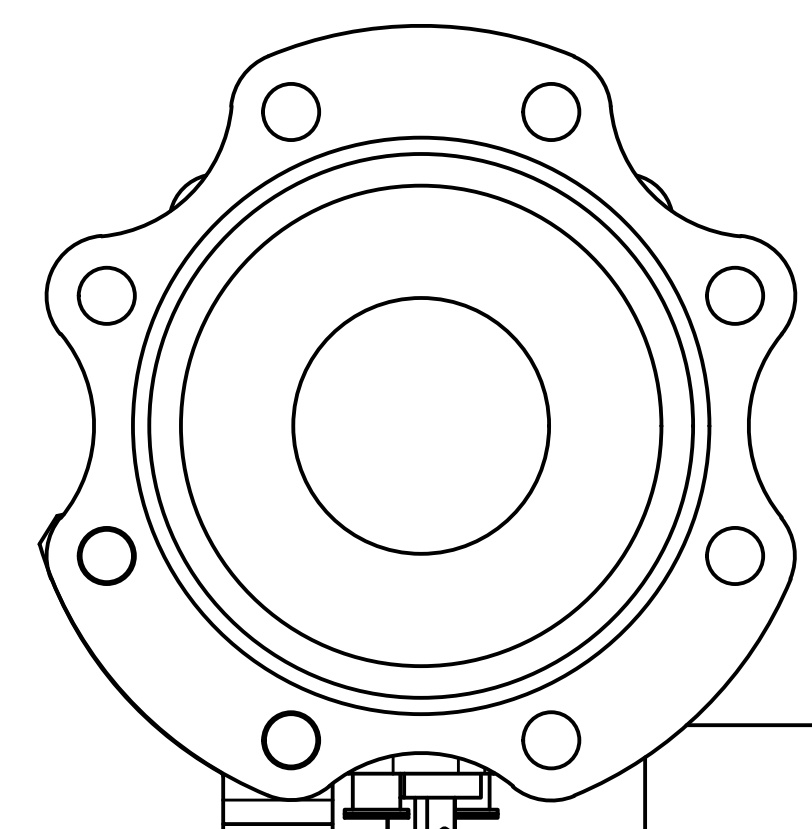
SALCO PRODUCTS, INC.

PART NAME: **SAFEGUARD™ BOV OPERATING SYSTEM**

MATERIAL: **SEE BOM**

PROJECT #: **R1409122** SHEET #: **1 OF 2** SCALE: **1:3**

DRAWING #: **E39992** PART #: **BOVHKITCSJ02**



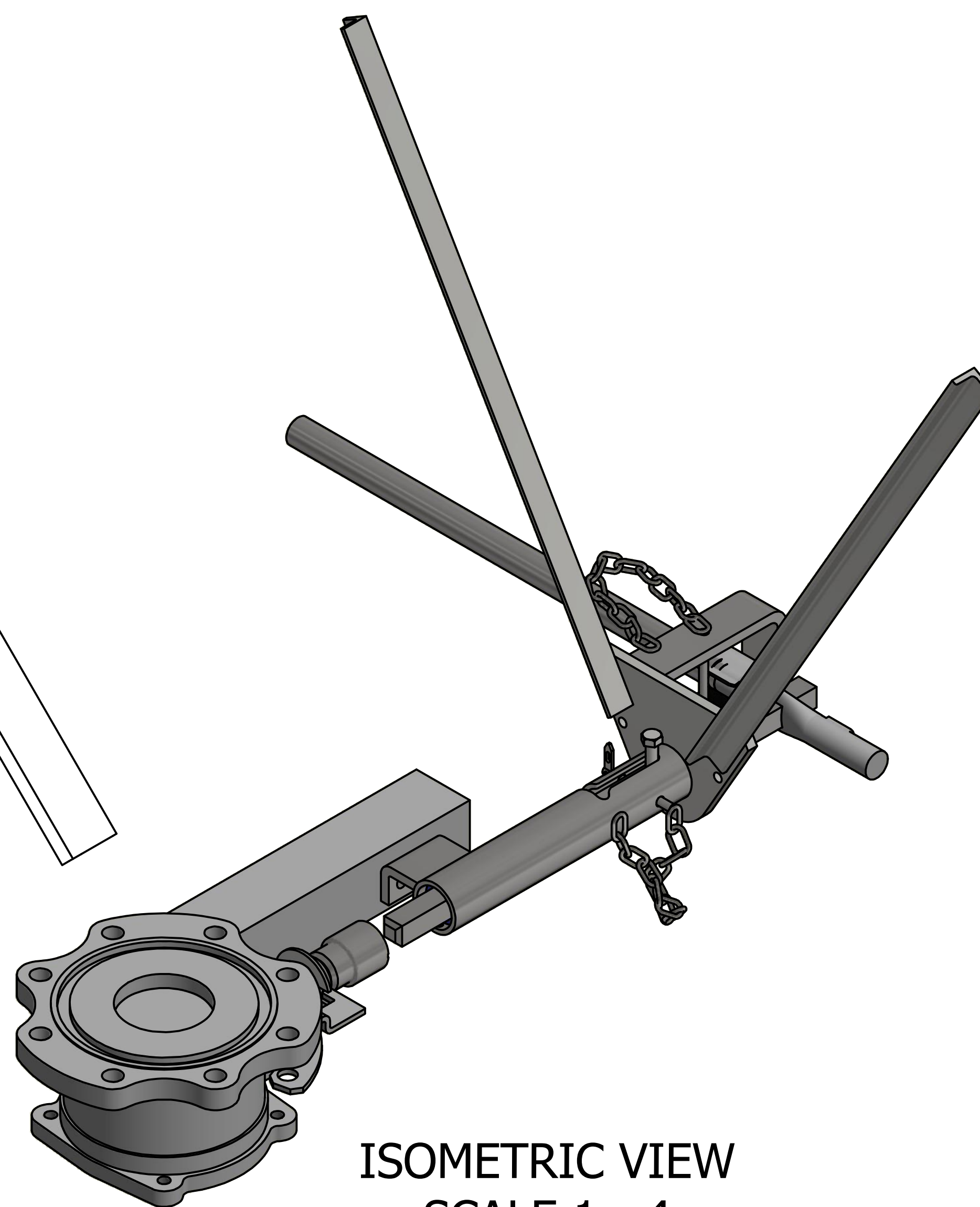
SEE NOTE 2

1/4

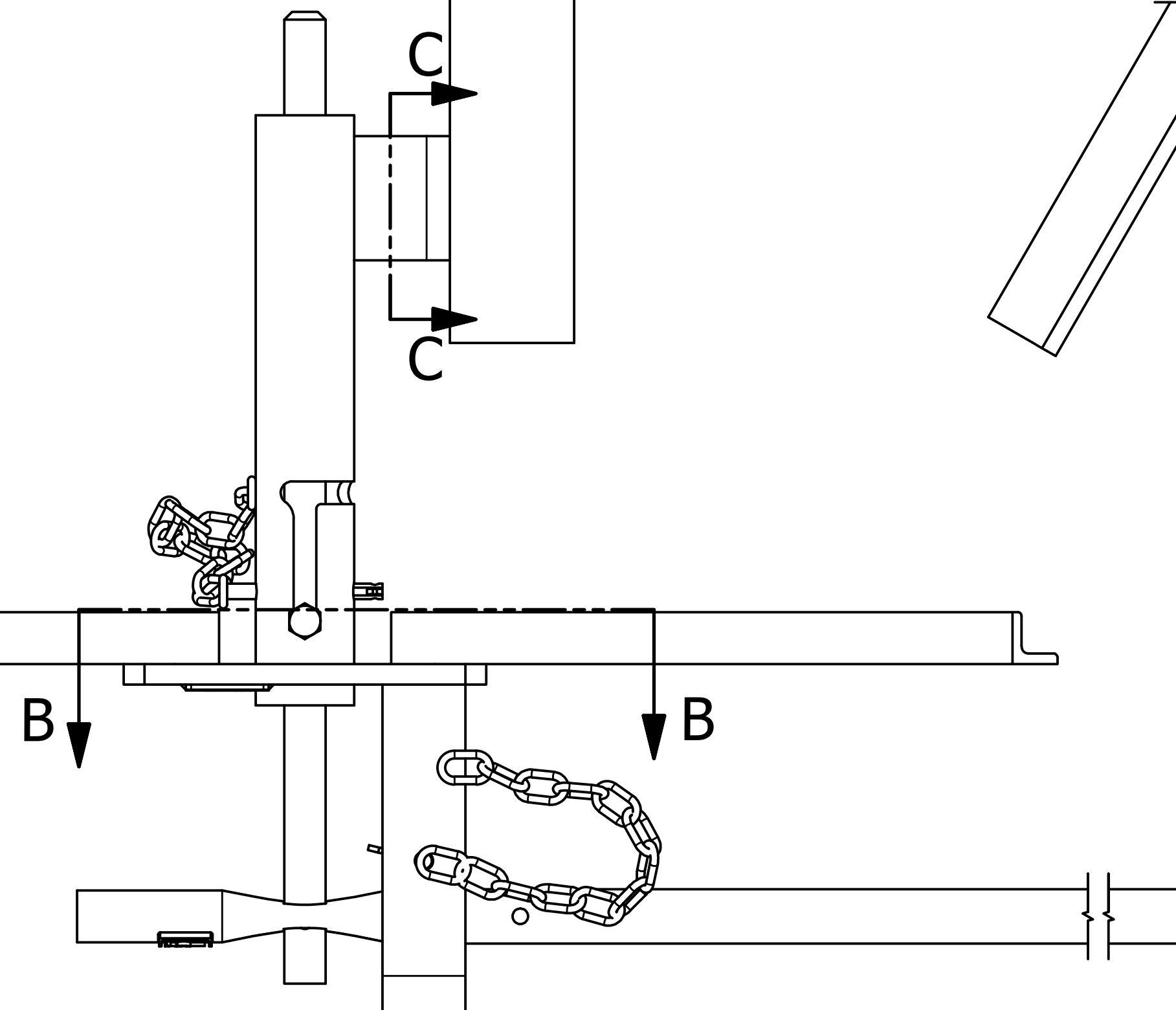
2X 3 - 1

2X 1/4 - 1/2

SECTION B-B
SCALE 1 : 2



ISOMETRIC VIEW
SCALE 1 : 4



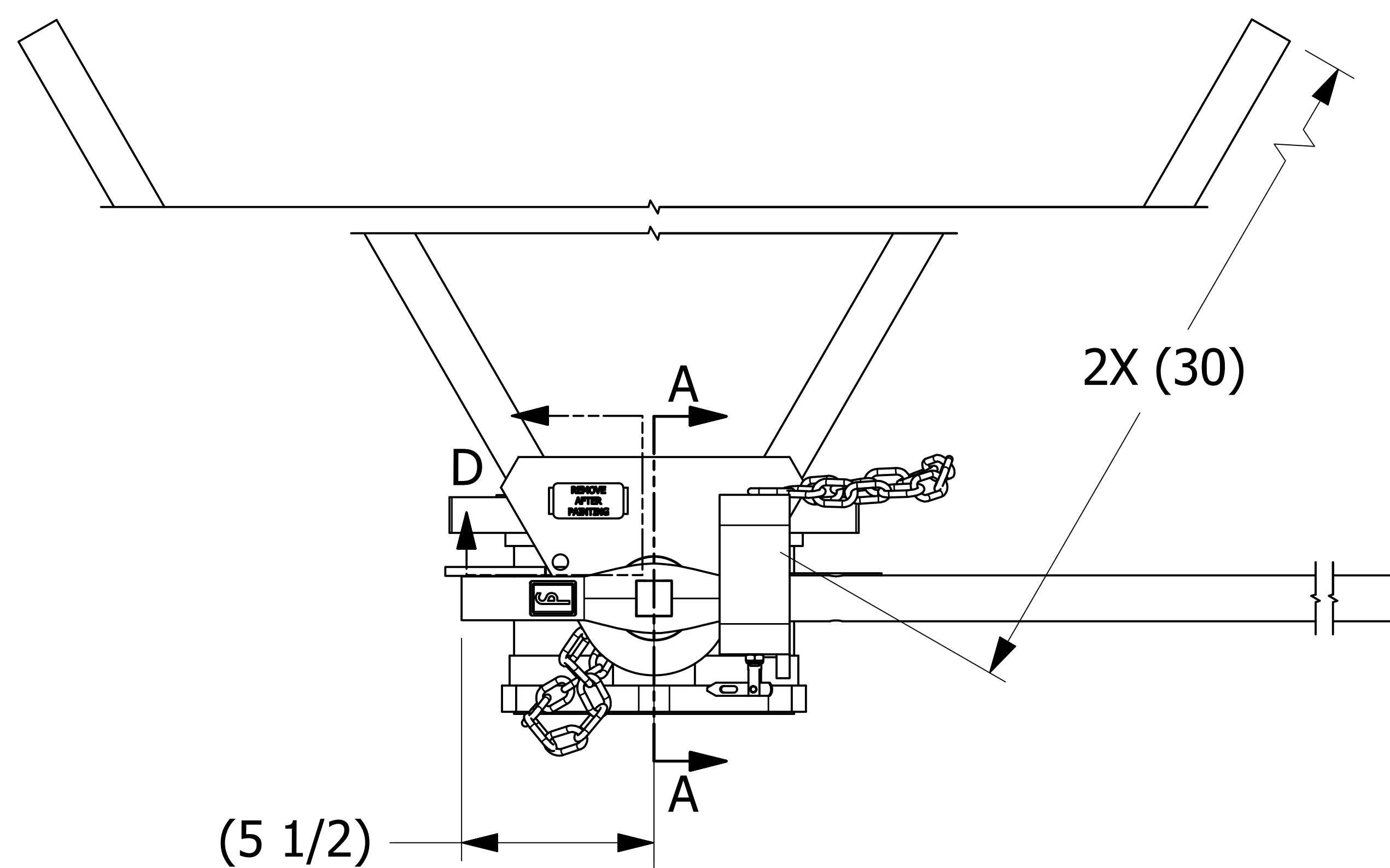
SEE NOTE 2

3/8

(3/8)

SEE NOTE 2

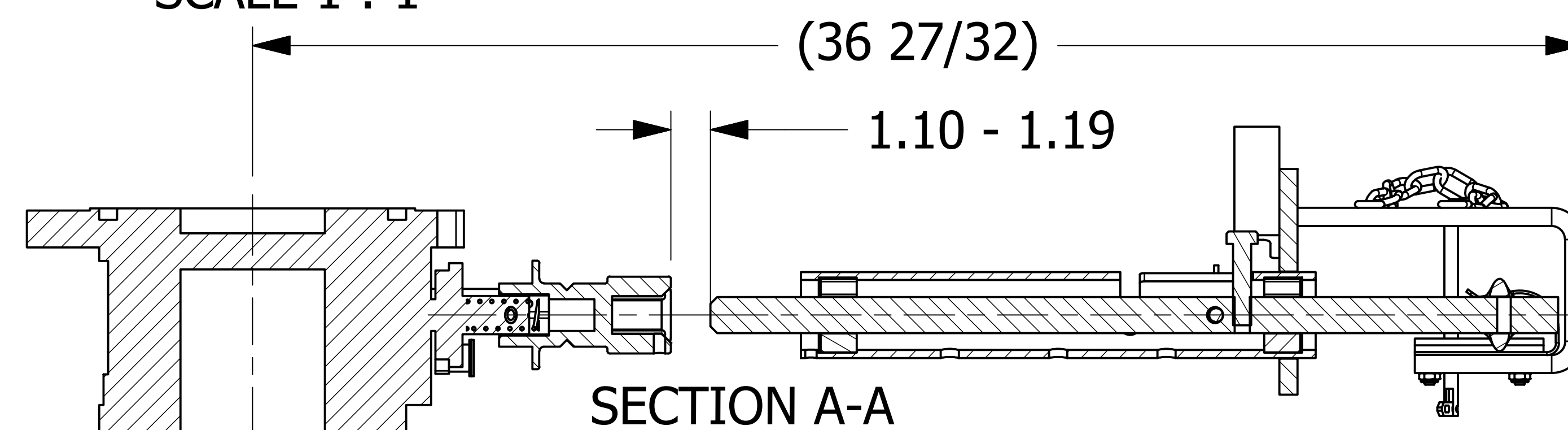
SECTION C-C
SCALE 1 : 1



2X (30)

(5 1/2)

(27)



SECTION A-A

(36 27/32)

1.10 - 1.19

.75

1.00

1/8

SEE NOTE 4 & 5

SEE NOTE 7

DETAIL D
SCALE 1 : 1

Ø7/16" HOLE FOR CHAIN LINK ATTACHMENT

REV	BY	DATE	DESCRIPTION
G	WEB	7-12-19	UPDATED NOTE #2; REPLACED "DSS 12" WITH "WPS-M03, WPS-M04, & WPS-T05" FOR WELD PROCEDURE; ADDED D-005 NOTE; ADDED PATENT NO.
F	WEB	4-6-18	ADDED TAG PLACEMENT DIMENSIONS, ADDED 1/8 TO TAG WELD, SORTED BOM, UPDATED WELD NOTES
E	WEB	5-17-17	ADDED "SAFEGUARD™" TO NOTE 5, UPDATED PART NAME, ADDED DSS 12 NOTE
D	RJP	9-8-15	ADDED TAGSS3 & A41924
C	RJP	7-17-15	ADDED VIEW OF DBOV2224V01, 1.10-1.19 WAS 1.10 REMOVED C39211
B	RJP	1-13-15	UPDATED ADAPTER, 1.00 WAS 1.15
A	JJK	10-20-14	RELEASED FOR PRODUCTION

UNLESS OTHERWISE SPECIFIED DIMENSIONAL TOLERANCES FRACTIONAL: ±1/16 X.XX: ±.03 X.XXX: ±.015 ANGULAR: ±1° DEBURR ALL SHARP EDGES. ALL MACHINED SURFACES TO HAVE A 125 RMS FINISH UNLESS NOTED OTHERWISE. THIRD ANGLE PROJECTION	DRAWN BY: RJP CHECKED BY: CHL PROTOTYPE BY: RJP PROTOTYPE DATE: 9/15/2014 APPROVED FOR PRODUCTION BY: VD PRODUCTION DATE: 10/20/2014
--	---

SALCO PRODUCTS, INC.

PART NAME: **SAFEGUARD™ BOV OPERATING SYSTEM**

MATERIAL: **SEE BOM**

PROJECT #: R1409122	SHEET #: 2 OF 2	SCALE: 1:3
DRAWING #: E39992	PART #: BOVHKITCSJ02	