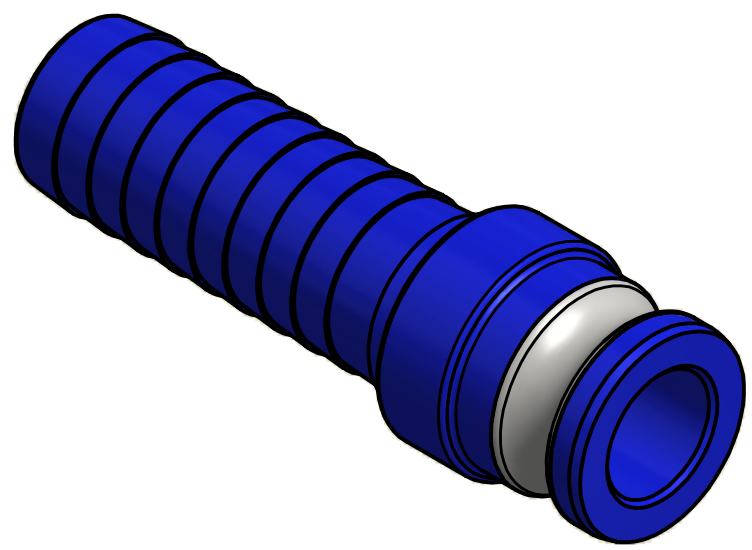
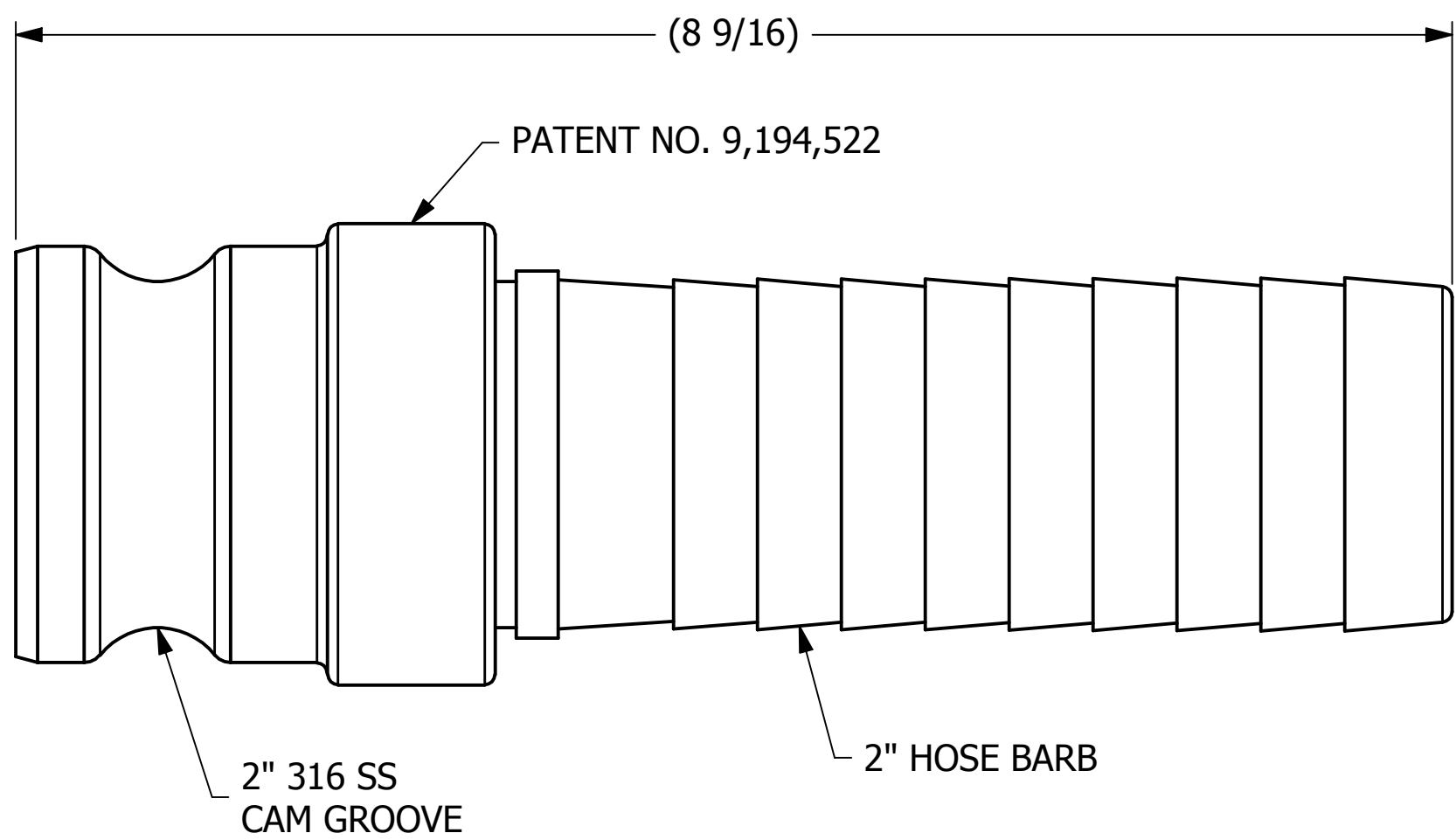
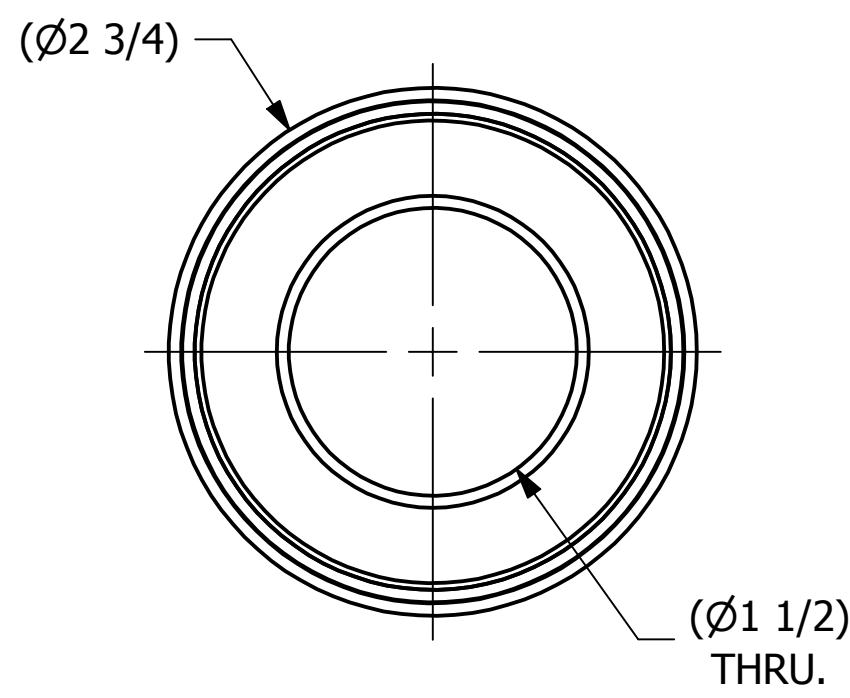


SALES DRAWING

SALES DRAWING



ISOMETRIC VIEW

NOTE:
PROFILE MEETS A-A-59326D.

REV	BY	DATE	DESCRIPTION
E	TAK	2-1-16	UPDATED PATENT NUMBER & CAM PROFILE NOTE
D	WEB	9-5-14	ADDED .409 DIMENSION
C	RJP	1-20-14	ADDED VICTAULIC GROOVE
B	WEB	11-7-13	ADDED NOTE #1, ADDED DIM Ø2.410
A	BG	2-19-13	DRAWING RELEASED FOR PRODUCTION

<small>UNLESS OTHERWISE SPECIFIED DIMENSIONAL TOLERANCES</small> FRACTIONAL: ±1/16 X.XX: ±.03 X.XXX: ±.015 ANGULAR: ±1° <small>DEBURR ALL SHARP EDGES. ALL MACHINED SURFACES TO HAVE A 125 RMS FINISH UNLESS NOTED OTHERWISE.</small> <small>THIRD ANGLE PROJECTION</small>	DRAWN BY:	GDS
	CHECKED BY:	CHL
	PROTOTYPE BY:	GDS
	PROTOTYPE DATE:	1/17/2013
	APPROVED FOR PRODUCTION BY:	BG
	PRODUCTION DATE:	2/19/2013

SALCO PRODUCTS, INC.		
PART NAME: HOSE BARB CAMMED 2"		
MATERIAL: SALCO PE/316 SS		
PROJECT #: 121211	SHEET #: 1 OF 1	SCALE: 1:1
DRAWING #: B35138	PART #: HS2KREP	

THIS PRINT, PROPERTY OF SALCO PRODUCTS INC., CONTAINS PROPRIETARY INFORMATION AND MUST NOT BE COPIED, REPRODUCED, OR USED DETRIMENTALLY TO OUR INTEREST.