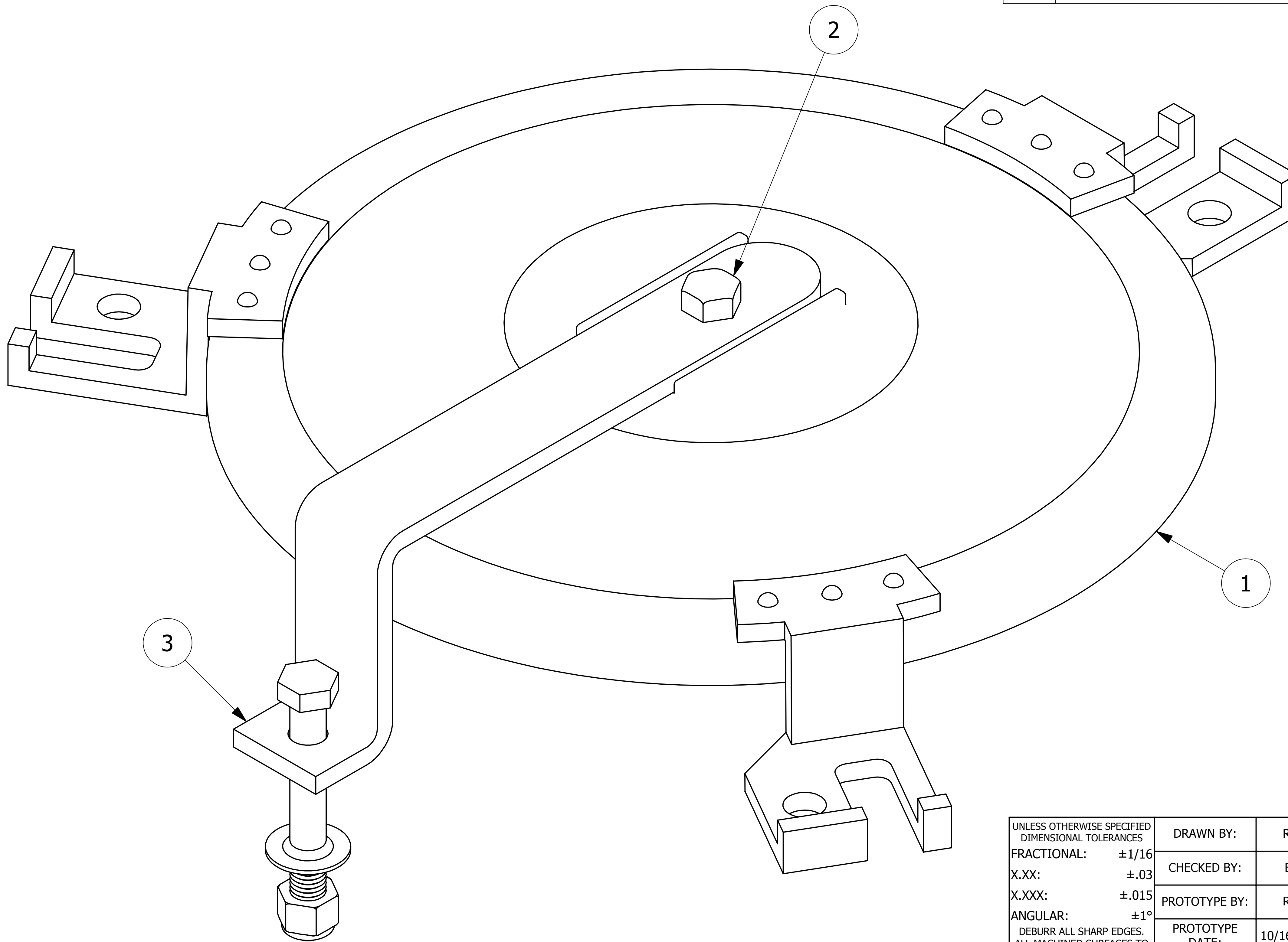



NO.	PART NAME	PART#	REQ'D	MATERIAL
1	VALVE COVER 16"	PHC16CBVA	1	ABS/NEOPRENE
2	HEX BOLT 5/8"-11X1 1/4"	BVG256	1	18-8 SS
3	BOV SWING ARM ASSEMBLY	C40744	1	SS



B	BG	1/28/15	REPLACED SV58N, A40190 & D40088 WITH C40744 ASSEMBLY
A	RJP	10-21-14	RELEASED FOR PRODUCTION
REV	BY	DATE	DESCRIPTION

UNLESS OTHERWISE SPECIFIED DIMENSIONAL TOLERANCES	DRAWN BY:	RJP
FRACTIONAL: ±1/16	CHECKED BY:	BG
X.XX: ±.03	PROTOTYPE BY:	RJP
X.XXX: ±.015	PROTOTYPE DATE:	10/16/2014
ANGULAR: ±1°	APPROVED FOR PRODUCTION BY:	BG
DEBURR ALL SHARP EDGES. ALL MACHINED SURFACES TO HAVE A 125 RMS FINISH UNLESS NOTED OTHERWISE.	PRODUCTION DATE:	10/21/2014
THIRD ANGLE PROJECTION		

 SALCO PRODUCTS, INC.		
PART NAME: VALVE COVER 16"		
MATERIAL: SEE BOM		
PROJECT #: 140417	SHEET #: 1 OF 1	SCALE: 1:1
DRAWING #: D40188	PART #: PHC16CBV1A	

THIS PRINT, PROPERTY OF SALCO PRODUCTS INC. CONTAINS PROPRIETARY INFORMATION AND MUST NOT BE COPIED, REPRODUCED, OR USED DETRIMENTALLY TO OUR INTEREST.