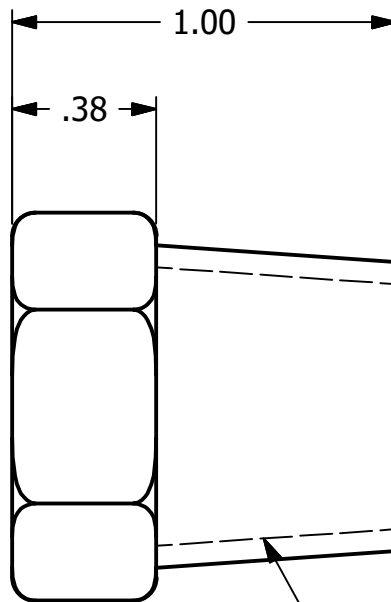
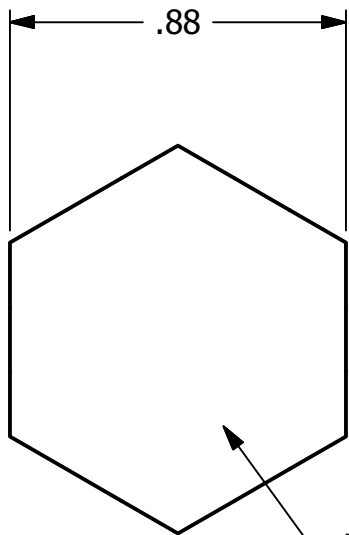


2



1



MARK PER Q-2.14
TEXT HEIGHT .1" MIN

1/2-14 NPT

B

B



A

A

NOTES:

1. SEE DOCUMENT Q-2.14 FOR MARKING PROCEDURE.
2. THREAD PROTECTOR REQUIRED FOR SHIPPING.
3. MTR REQUIRED.

B	WEB	12/21/20	ADDED NOTES; UPDATED TO CURRENT CAD STANDARDS
A	MRC	7-26-99	ADDED NEW TITLE BLOCK; MATERIAL WAS 304 SS
REV	BY	DATE	DESCRIPTION

<small>UNLESS OTHERWISE SPECIFIED DIMENSIONAL TOLERANCES</small> FRACTIONAL: ±1/16 X.XX: ±.03 X.XXX: ±.015 ANGULAR: ±1° DEBURR ALL SHARP EDGES. ALL MACHINED SURFACES TO HAVE A 125 RMS FINISH UNLESS NOTED OTHERWISE. <small>THIRD ANGLE PROJECTION</small> 	DRAWN BY:	CLH
	CHECKED BY:	
	PROTOTYPE DATE:	
	APPROVED FOR PRODUCTION BY:	CLH
	PRODUCTION DATE:	10/1/1996
	SIZE:	A
DRAWING #:	8381	

PART NAME: PLUG 1/2"		
MATERIAL: 316 SS		
PROJECT #:	SHEET #: 1 OF 1	SCALE: 2:1
PART #: HR20VPLG		

2



1