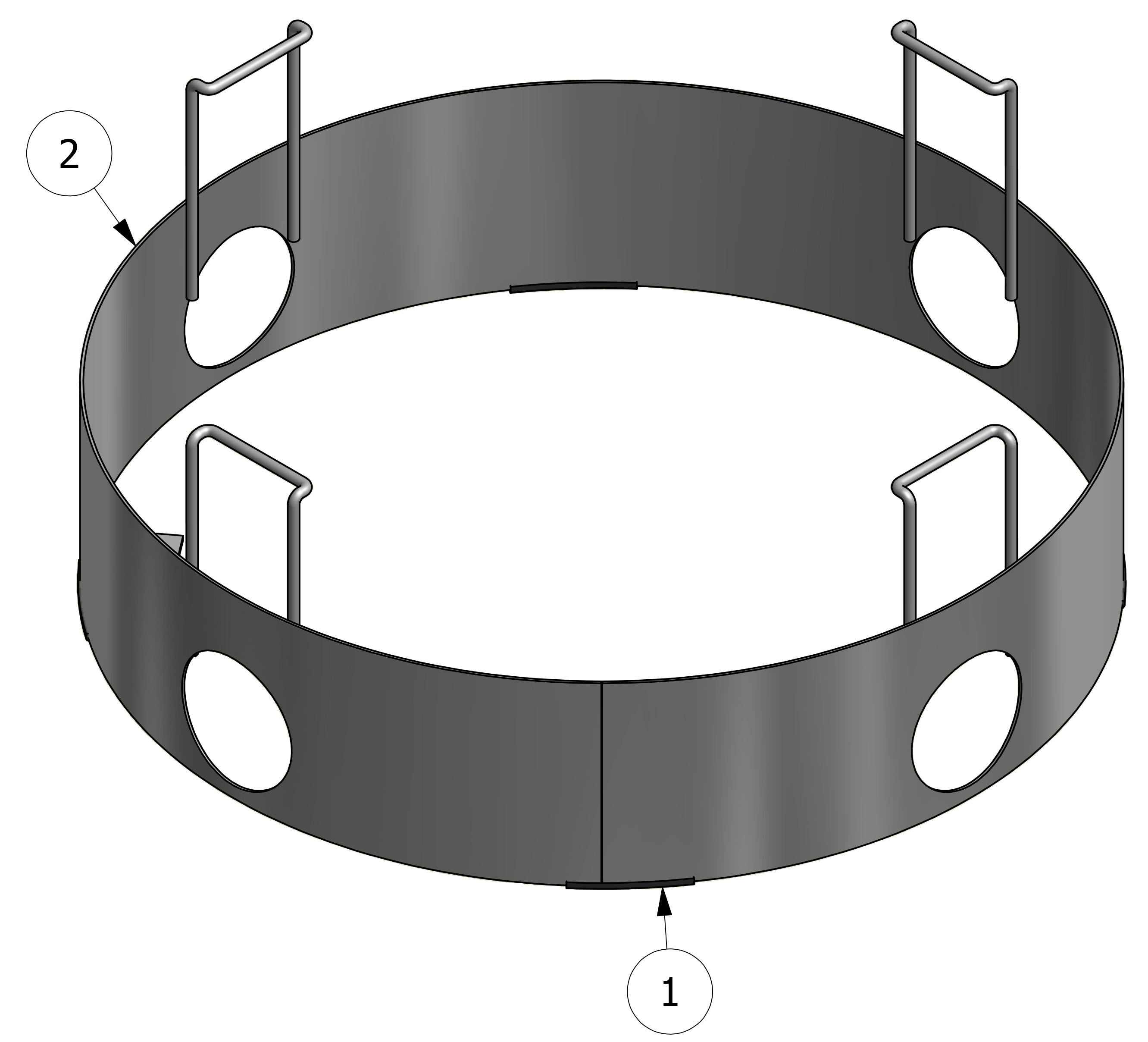
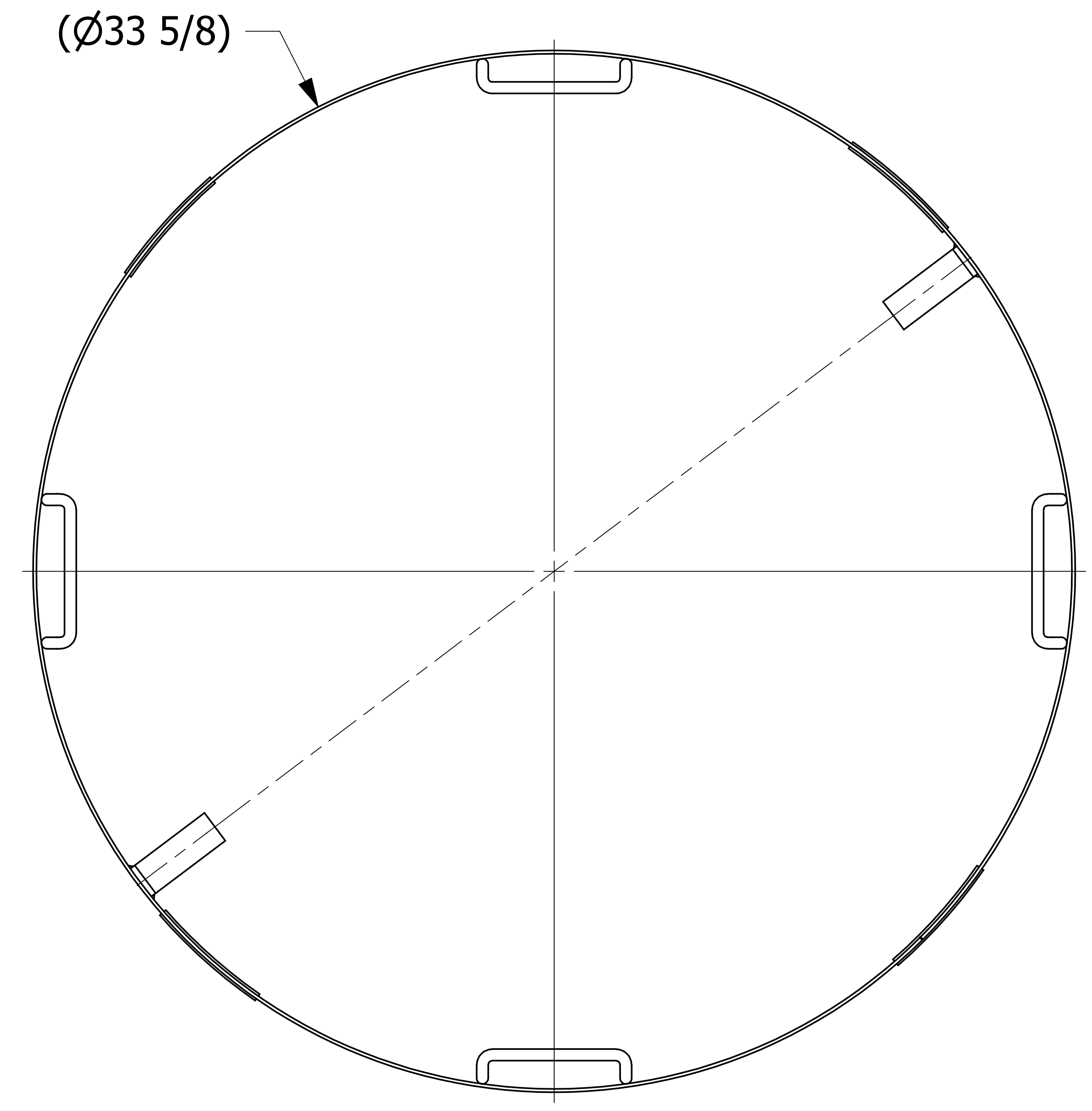
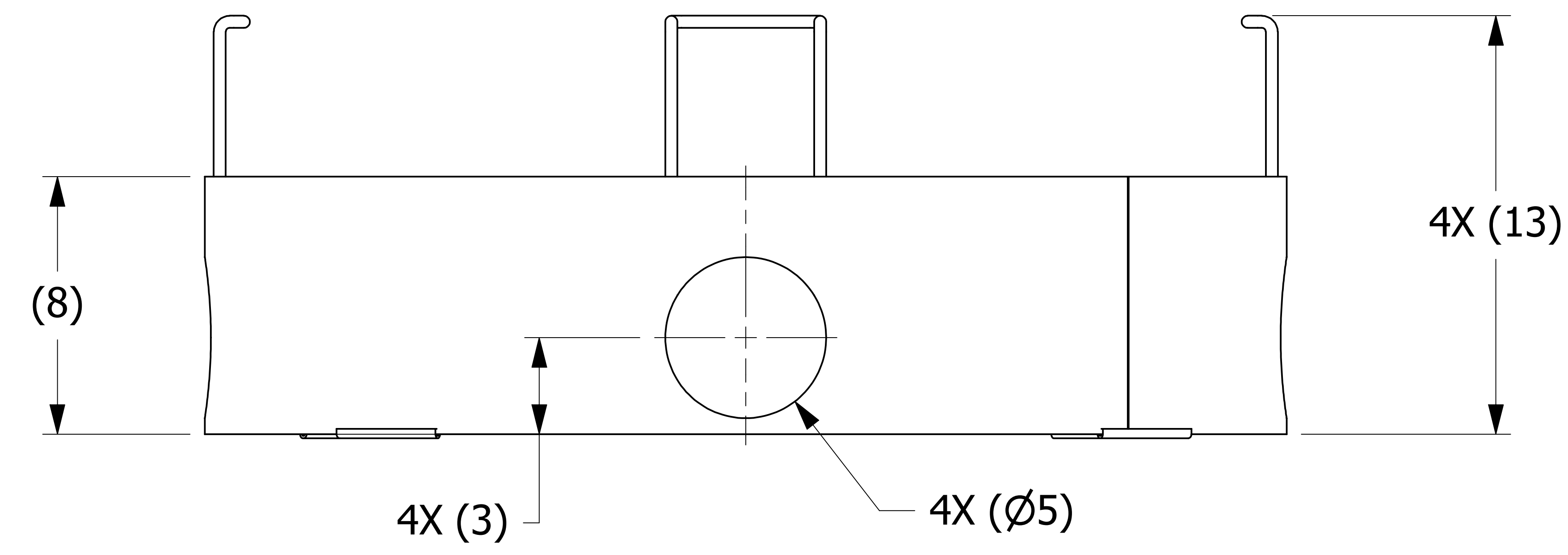


NO	PART NAME	PART#	REQ'D	MATERIAL
1	EDGE TRIM 1/8"	A21066	4	NEOPRENE
2	SECURITY RING 20"	MB20PR106CSNL	1	CS
3	SECURITY RING LABEL (NOT SHOWN)	MBPRLBL	1	VINYL



ISOMETRIC VIEW



- NOTES:**
1. APPLY LABEL (MBPRLBL) ON INSIDE THE RING. DO NOT PLACE LABEL OVER HOLE.
  2. GLUE EDGE TRIM (A21066) TO BOTTOM OF RING.

REV	BY	DATE	DESCRIPTION
A	JG	9-7-17	RELEASED FOR PRODUCTION

<small>UNLESS OTHERWISE SPECIFIED DIMENSIONAL TOLERANCES FRACTIONAL: ±1/16 X.XX: ±.03 X.XXX: ±.015 ANGULAR: ±1° DEBURR ALL SHARP EDGES. ALL MACHINED SURFACES TO HAVE A 125 RMS FINISH UNLESS NOTED OTHERWISE.</small>	DRAWN BY:	JG
	CHECKED BY:	VD
	PROTOTYPE BY:	JG
	PROTOTYPE DATE:	8/25/2017
	APPROVED FOR PRODUCTION BY:	VD
THIRD ANGLE PROJECTION	PRODUCTION DATE:	9/7/2017

**SALCO PRODUCTS, INC.**

**SECURITY RING 20"**

**SEE BOM**

PROJECT #: 080922F SHEET #: 1 OF 1 SCALE: 3:8

DRAWING #: E45990 PART #: MB20PR106CS