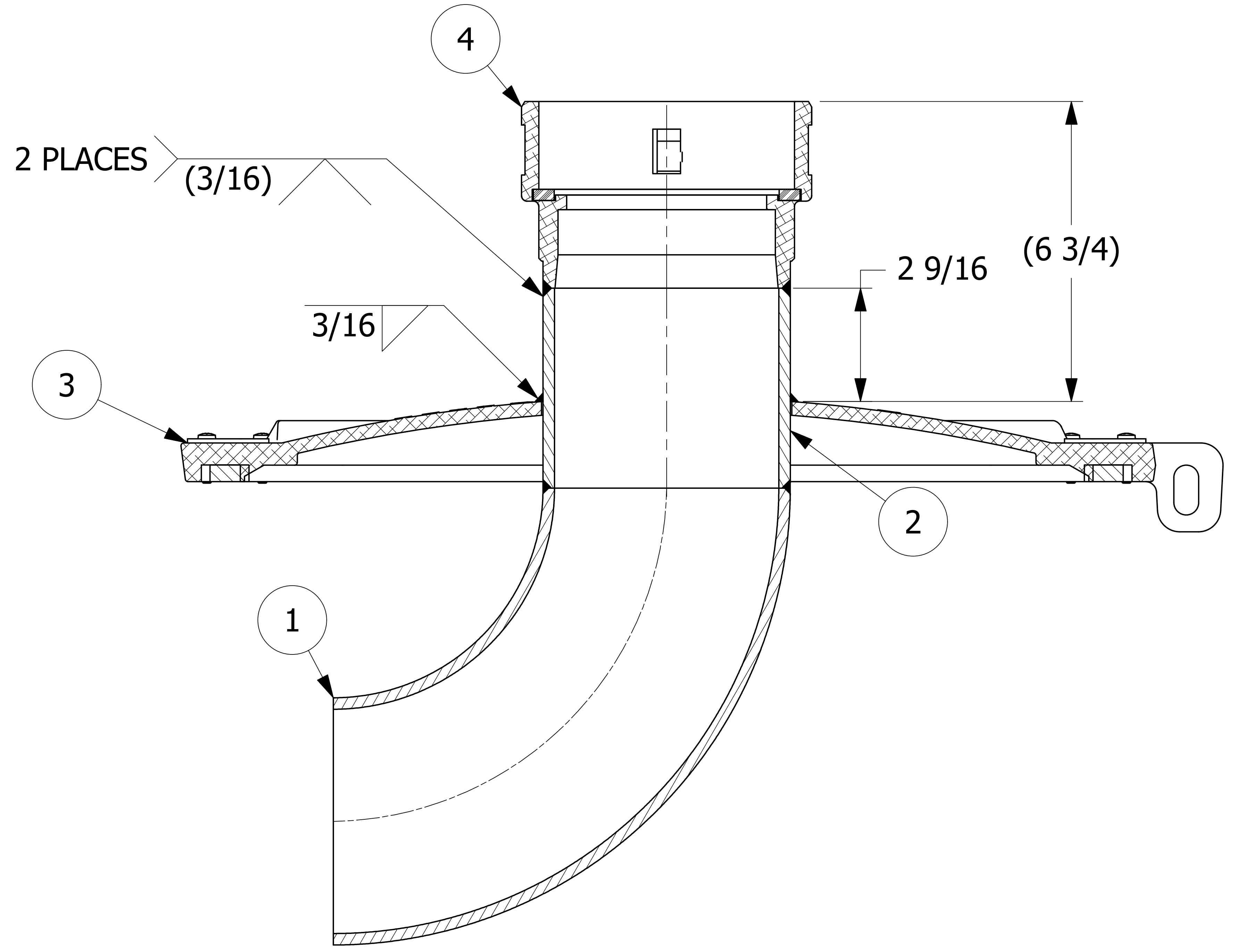


NO.	PART NAME	PART#	REQ'D	MATERIAL
1	ELBOW 5" 90°	5A90SCH40ELB	1	ALUMINUM
2	PIPE 5"	B48836	1	6063-T6 AL
3	PD HATCH COVER 20"	PD20HC1008AH2	1	ALUMINUM/SS
4	COUPLER 5"	PT50DWBA	1	ALUMINUM



NOTE:
 1. SEE DOCUMENTS WPS-T01, WPS-M09, & WPS-P01 FOR WELDING PROCEDURES.
 2. WELD ACCEPTANCE CRITERIA TO MEET DOCUMENT D-005.
 3. EXIT ANGLE OF 90° ELBOW MUST BE OPPOSING THE HINGE OF THE HATCH COVER.

UNLESS OTHERWISE SPECIFIED DIMENSIONAL TOLERANCES FRACTIONAL: ±1/16 X.XX: ±.03 X.XXX: ±.015 ANGULAR: ±1° DEBURR ALL SHARP EDGES. ALL MACHINED SURFACES TO HAVE A 125 RMS FINISH UNLESS NOTED OTHERWISE.	DRAWN BY: CHL
	CHECKED BY: PJG
	PROTOTYPE BY: CHL
	PROTOTYPE DATE: 11/7/2007
	APPROVED FOR PRODUCTION BY: PJG
THIRD ANGLE PROJECTION	PRODUCTION DATE: 8/11/2011

B	WEB	9-5-19	REMOVED QAP4E-1 NOTE; UPDATED WELD NOTE TO WPS-T01, WPS-M09, & WPS-P01; ADDED D-005 NOTE; UPDATED WELDS; REPLACED PD20HC1002A W/ PD20HC1008AH2; REPLACED P5A40 W/ B48836
A	SMA	8-11-11	NEW DRAWING ADDED TO SYSTEM
REV	BY	DATE	DESCRIPTION

SALCO PRODUCTS, INC.

PART NAME: **LOADING COVER 20"**

MATERIAL: **SEE BOM**

PROJECT #: **WAG0481** SHEET #: **1 OF 1** SCALE: **2:3**

DRAWING #: **E24374** PART #: **LC2050FK90PD**