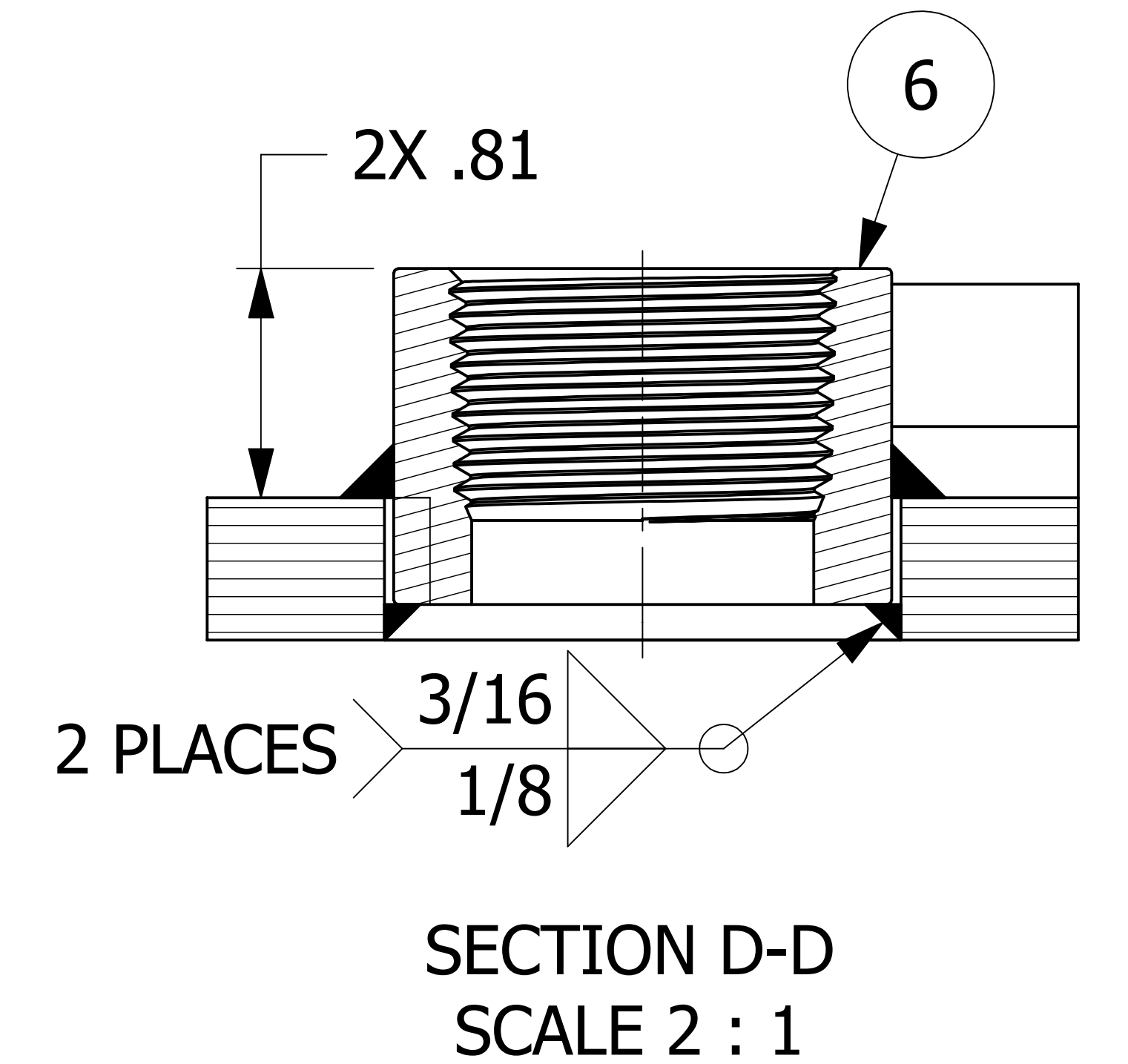
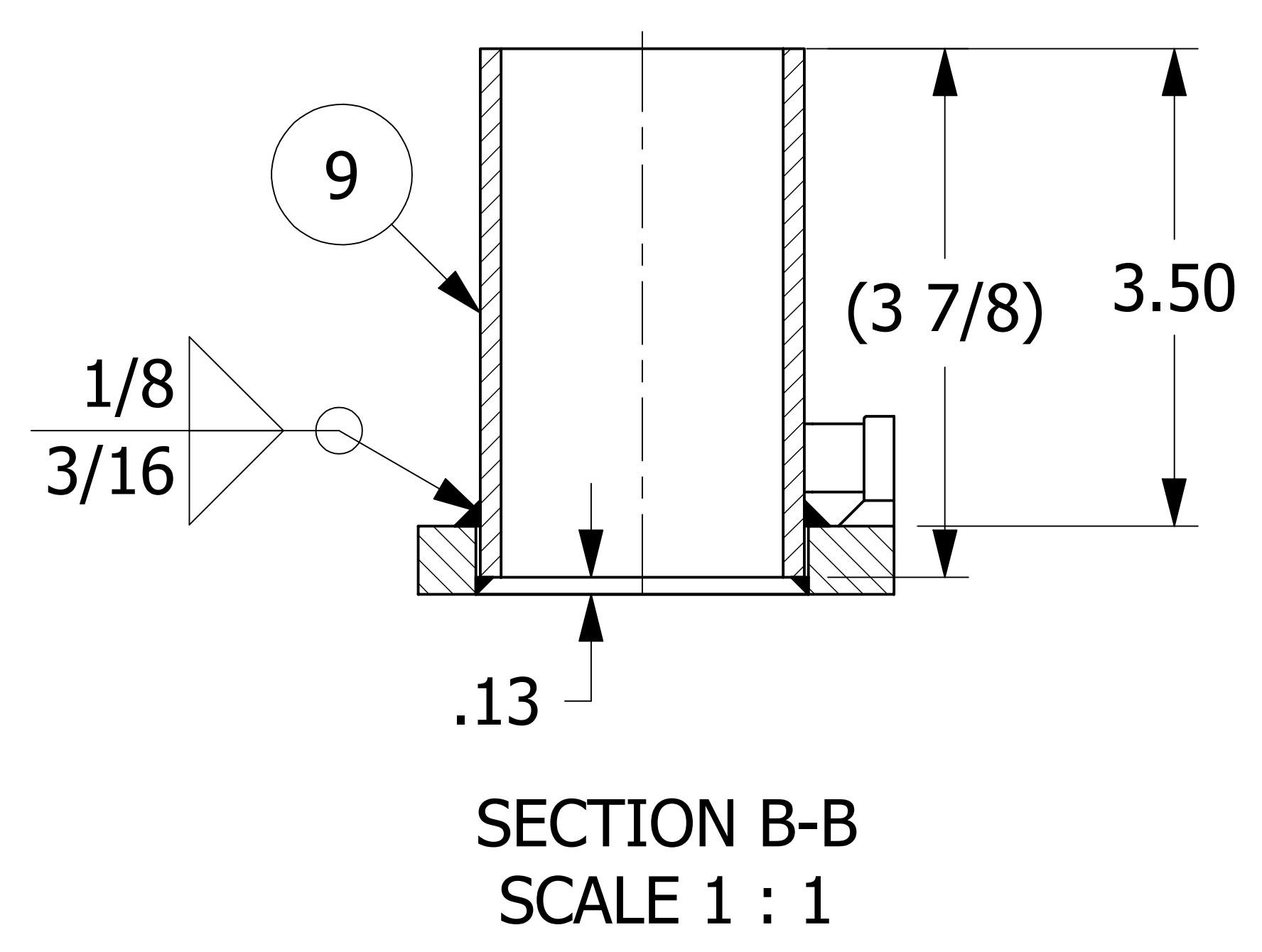
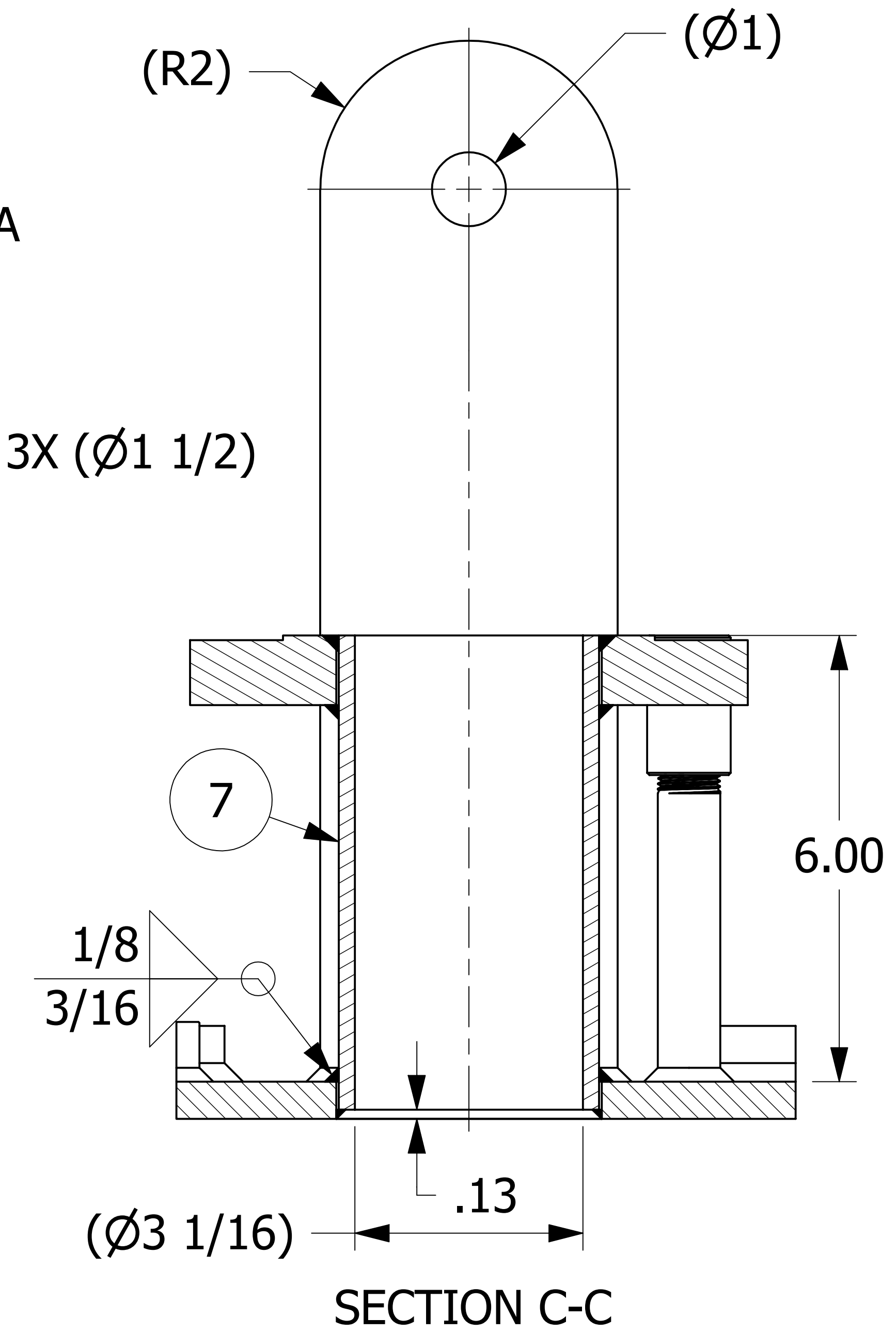
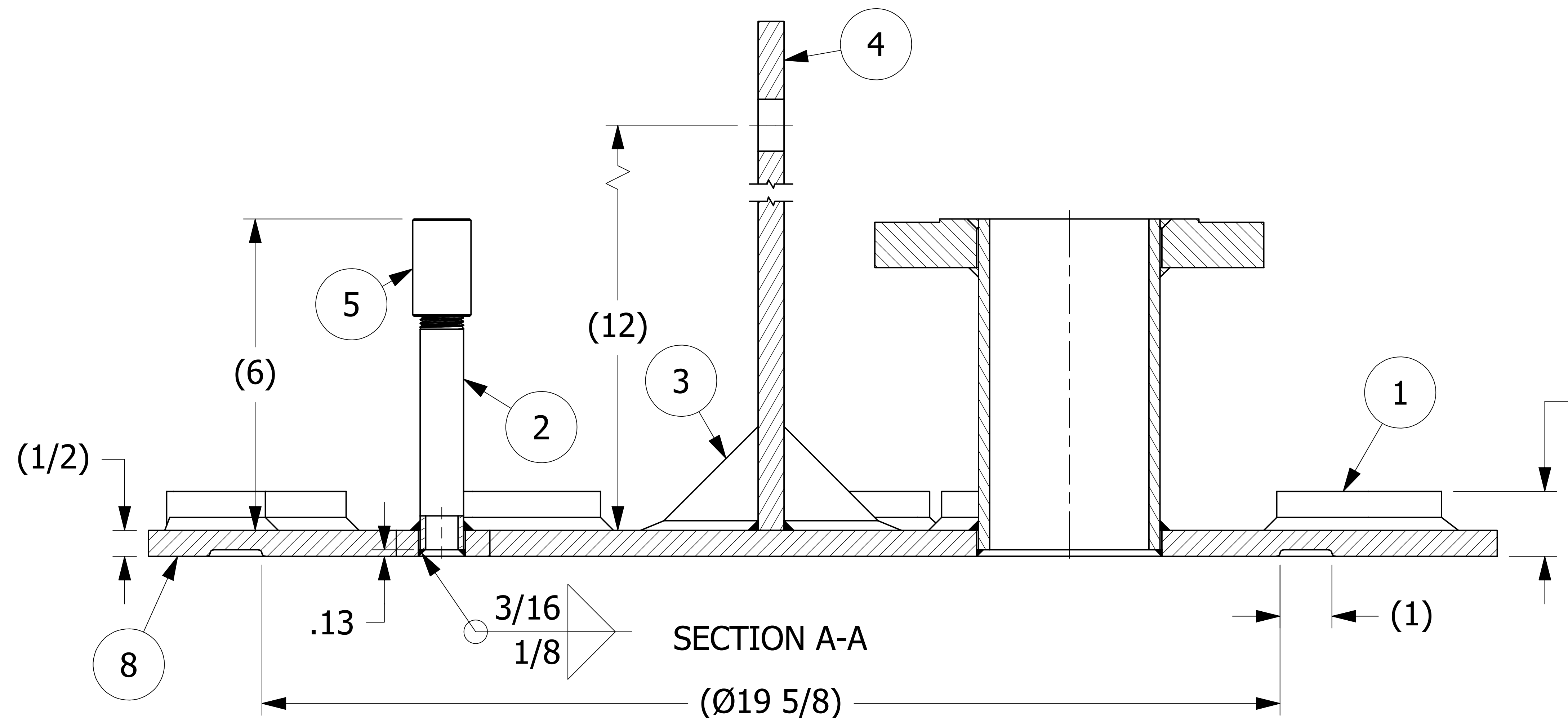


NO	PART NAME	PART#	REQ'D	MATERIAL
1	LOADING COVER EYEBOLT SPACER	A43674	12	CS
2	PIPE NIPPLE 1/2"	A43679	1	CS
3	GUSSET TAB	A43769	4	CS
4	LOADING COVER LIFTING LUG	C43676	1	CS
5	COUPLING 1/2"	CPLG12CS3000	1	CS
6	HALF COUPLING 1"	CPLGH1CS3000	2	CS
7	FLANGE ASSEMBLY 3"	D43673	1	CS
8	MANWAY LOADING PLATE 20"	E43670	1	CS
9	PIPE 2"	P2C40	.34 FT	CS



NOTES:

1. WELD MUST BE IN ACCORDANCE WITH AWS D15.1 (OR APPROVED EQUIVALENT) BY CERTIFIED WELDERS. PROCEDURES TO BE VENDOR SUPPLIED AND SALCO APPROVED.
2. DEBURR AND BREAK ALL SHARP EDGES.



12X 1 1/4

UNLESS OTHERWISE SPECIFIED DIMENSIONAL TOLERANCES	DRAWN BY:	JG
FRACTIONAL: ±1/16	CHECKED BY:	EJF
X.XX: ±.03	PROTOTYPE BY:	JG
X.XXX: ±.015	PROTOTYPE DATE:	7/18/2016
ANGULAR: ±1°	APPROVED FOR PRODUCTION BY:	EJF
DEBURR ALL SHARP EDGES. ALL MACHINED SURFACES TO HAVE A 125 RMS FINISH UNLESS NOTED OTHERWISE.	PRODUCTION DATE:	7/19/2016
THIRD ANGLE PROJECTION		

A	JG	7-19-16	RELEASED FOR PRODUCTION
REV	BY	DATE	DESCRIPTION
SALCO PRODUCTS, INC.			
MANWAY LOADING PLATE 20" WELDMENT			
SEE BOM			
PROJECT #:	R160510F	SHEET #:	1 OF 1
DRAWING #:	E44020	PART #:	LC202TMC10
		SCALE:	3:4