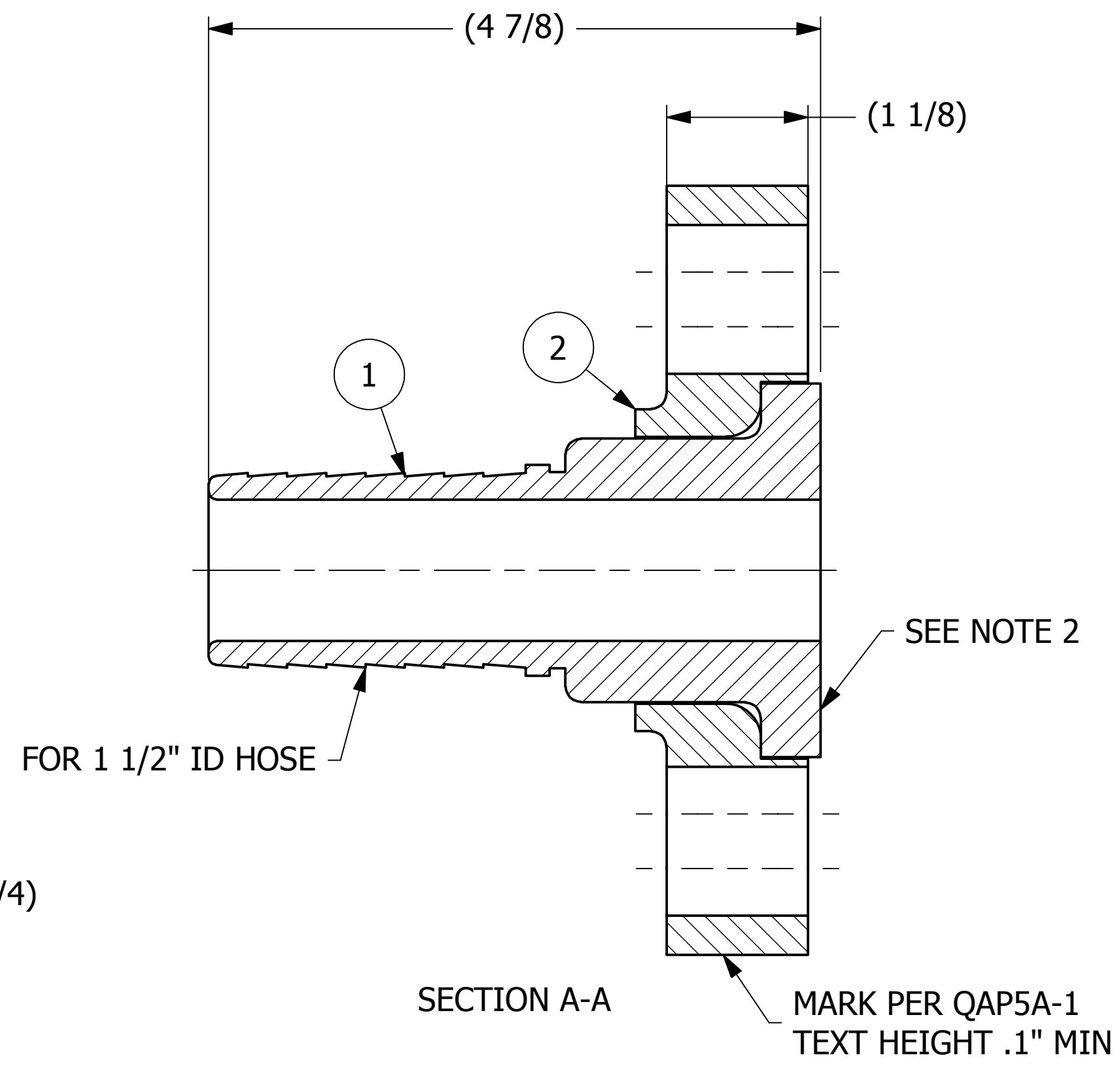
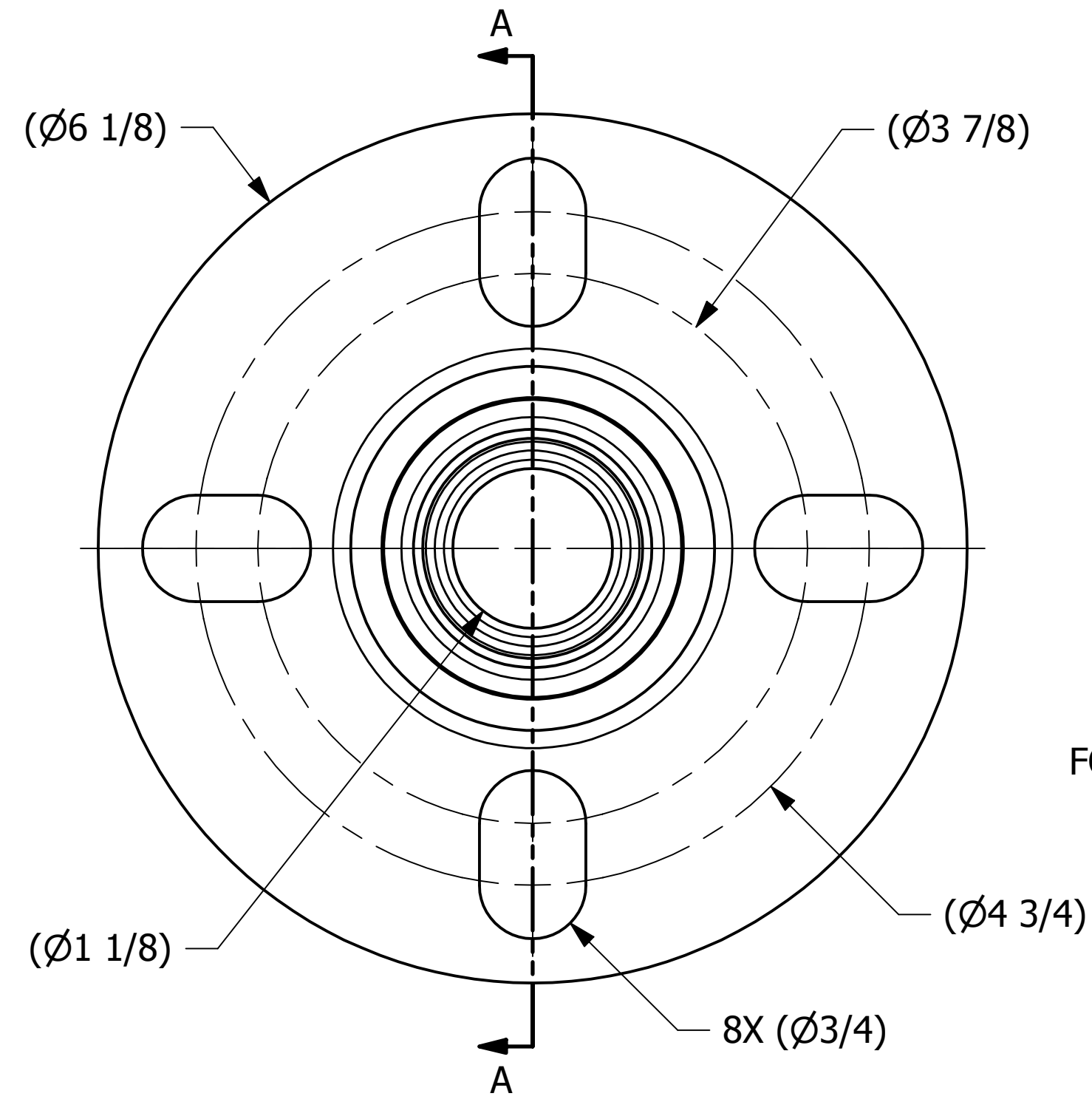
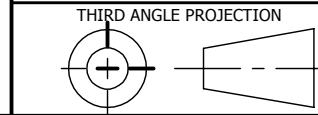


NO.	PART NAME	PART #	REQ'D	MATERIAL
1	HOSE BARB 1 1/2"	HS15HBP	1	SALCO PE
2	INSERT FLANGE 2"-1 1/2"	HS215FLP2	1	SALCO PE



- NOTES:
1. SEE DOCUMENT DSS 5 FOR SERRATED GASKET SURFACE SPECIFICATIONS.
 2. SEE DOCUMENT QAP5A-1 FOR MARKING PROCEDURES.

UNLESS OTHERWISE SPECIFIED
 DIMENSIONAL TOLERANCES
 FRACTIONAL: $\pm 1/16$
 X.XX: $\pm .03$
 X.XXX: $\pm .015$
 ANGLE: $\pm 1^\circ$
 DEBURR ALL SHARP EDGES.
 ALL MACHINED SURFACES TO
 HAVE A 125 RMS FINISH UNLESS
 NOTED OTHERWISE.



DRAWN BY:	JG
CHECKED BY:	GDS
PROTOTYPE BY:	JG
PROTOTYPE DATE:	4/10/2015
APPROVED FOR PRODUCTION BY:	CHL
PRODUCTION DATE:	4/10/2015

REV	BY	DATE	DESCRIPTION
A	JG	4-10-15	RELEASED FOR PRODUCTION

SALCO PRODUCTS, INC.

PART NAME: **FLANGED HOSE BARB 1 1/2"-2"X1 1/2"**

MATERIAL: **SEE BOM**

PROJECT #: **130411** SHEET #: **1 OF 1** SCALE: **1:1**

DRAWING #: **C41298** PART #: **HS215X15FTBPY**