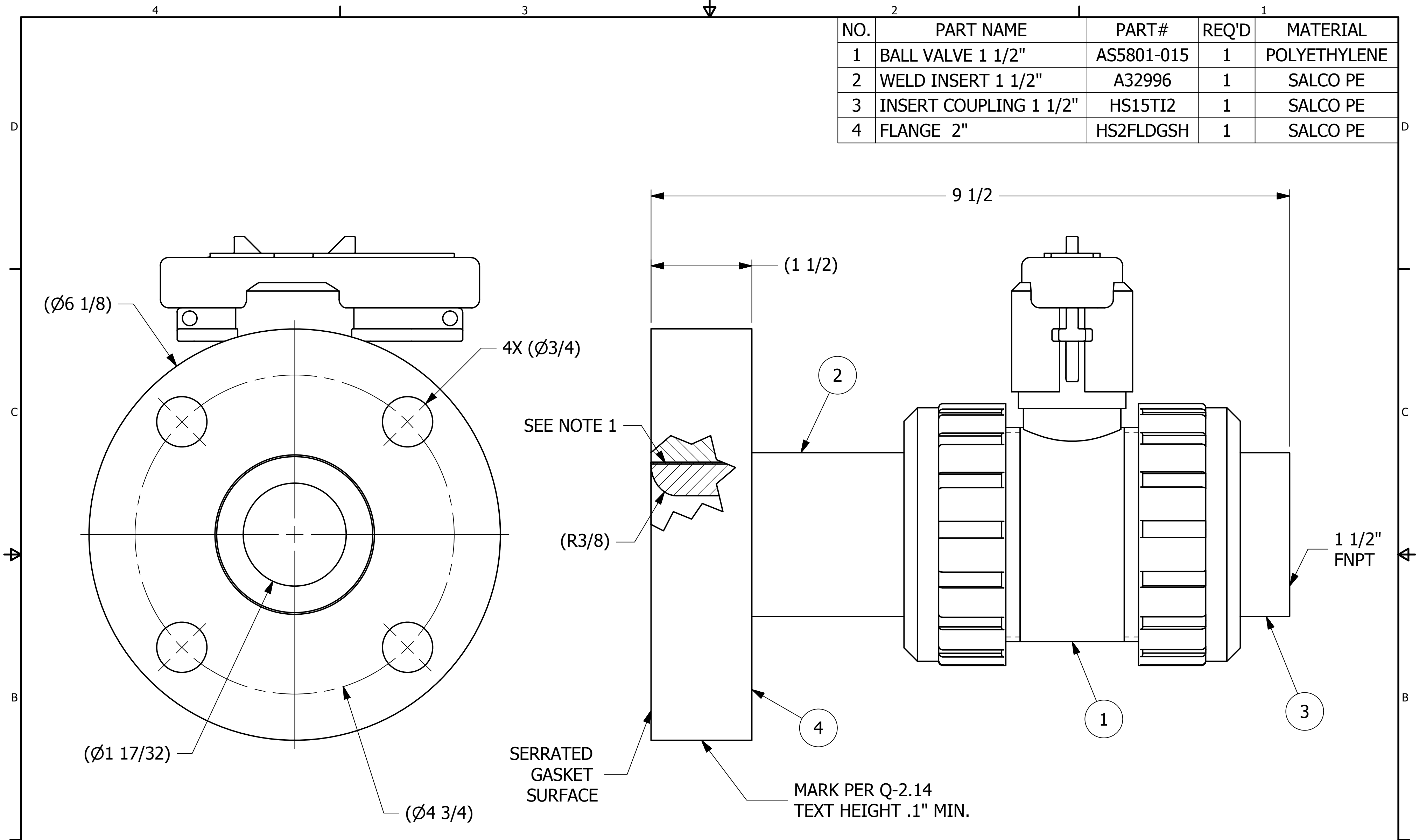


NO.	PART NAME	PART#	REQ'D	MATERIAL
1	BALL VALVE 1 1/2"	AS5801-015	1	POLYETHYLENE
2	WELD INSERT 1 1/2"	A32996	1	SALCO PE
3	INSERT COUPLING 1 1/2"	HS15TI2	1	SALCO PE
4	FLANGE 2"	HS2FLDGSH	1	SALCO PE



NOTE:
 1. SEE DOCUMENT DSS 3 FOR FRICTION WELDING SPECIFICATIONS.
 2. SEE DOCUMENT Q-2.14 FOR MARKING PROCEDURE.

REV	BY	DATE	DESCRIPTION
C	JG	9-20-18	Q-2.14 WAS QAP5A-1
B	WEB	6-6-14	ADDED NOTE #1
A	WEB	2-14-13	RELEASED FOR PRODUCTION

UNLESS OTHERWISE SPECIFIED DIMENSIONAL TOLERANCES FRACTIONAL: $\pm 1/16$ X.XX: $\pm .03$ X.XXX: $\pm .015$ ANGLE: $\pm 1^\circ$ DEBURR ALL SHARP EDGES. ALL MACHINED SURFACES TO HAVE A 125 RMS FINISH UNLESS NOTED OTHERWISE. THIRD ANGLE PROJECTION	DRAWN BY:	WEB
	CHECKED BY:	CHL
	PROTOTYPE BY:	WEB
	PROTOTYPE DATE:	2/12/2013
	APPROVED FOR PRODUCTION BY:	VD
	PRODUCTION DATE:	2/14/2013

SALCO PRODUCTS, INC.

PART NAME: **AIR VALVE ASSEMBLY 2"X1 1/2"**

MATERIAL: **SEE BOM**

PROJECT #: **031212AO** SHEET #: **1 OF 1** SCALE: **1:1**

DRAWING #: **C35354** PART #: **HSVAPE35354**