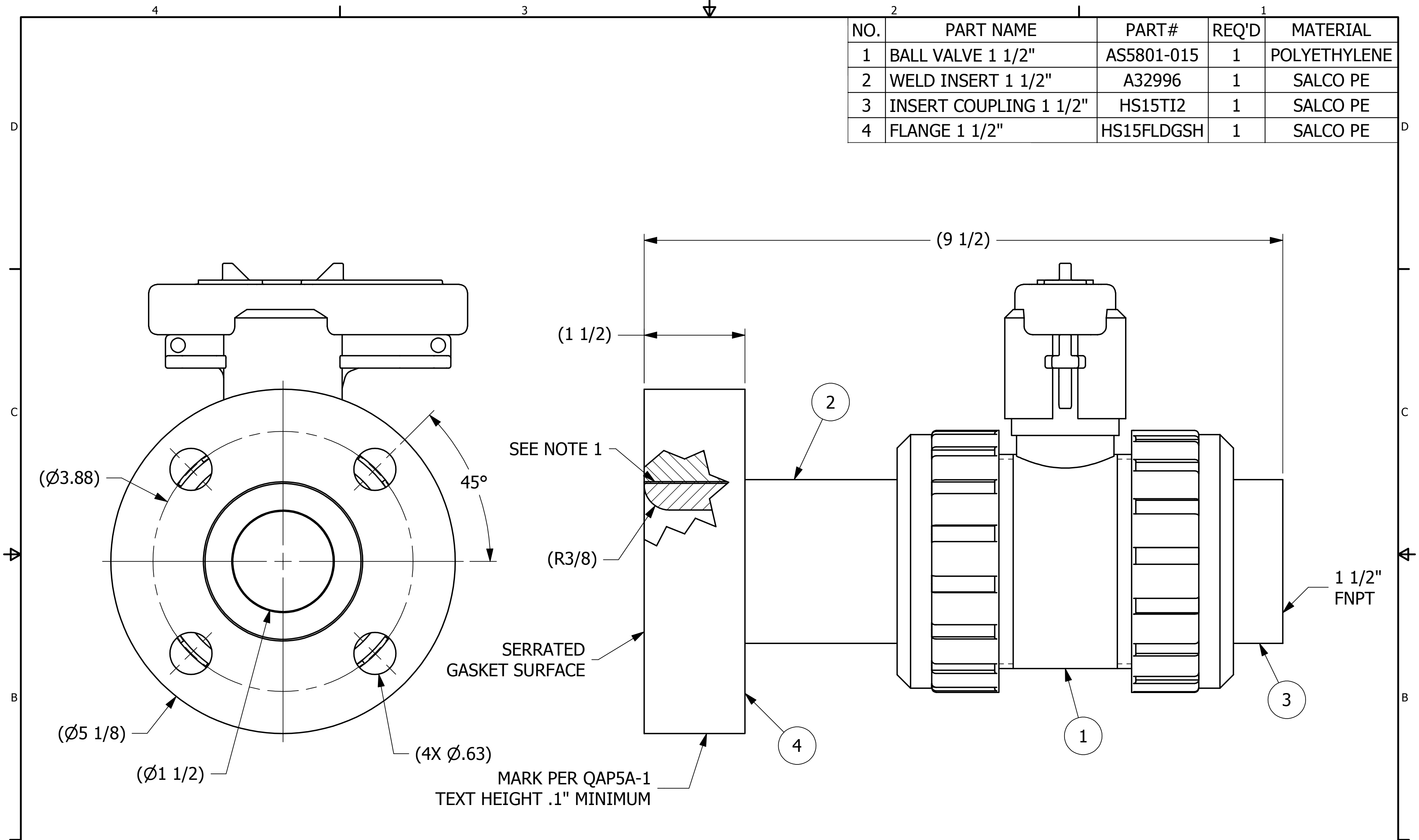


NO.	PART NAME	PART #	REQ'D	MATERIAL
1	BALL VALVE 1 1/2"	AS5801-015	1	POLYETHYLENE
2	WELD INSERT 1 1/2"	A32996	1	SALCO PE
3	INSERT COUPLING 1 1/2"	HS15TI2	1	SALCO PE
4	FLANGE 1 1/2"	HS15FLDGSH	1	SALCO PE



**NOTE:**  
 1. SEE DOCUMENT DSS 3 FOR FRICTION WELDING SPECIFICATIONS.  
 2. SEE DOCUMENT QAP5A-1 FOR MARKING PROCEDURE.

REV	BY	DATE	DESCRIPTION
C	GS	9-6-13	UPDATED TB, NOTES, AND LEADERS.
B	TAK	11-29-12	REPLACED HS15TI WITH HS15TI2
A	BG	8-1-12	NEW PART ADDED TO THE NETWORK

UNLESS OTHERWISE SPECIFIED DIMENSIONAL TOLERANCES FRACTIONAL: $\pm 1/16$ X.XX: $\pm .03$ X.XXX: $\pm .015$ ANGLE: $\pm 1^\circ$ DEBURR ALL SHARP EDGES. ALL MACHINED SURFACES TO HAVE A 125 RMS FINISH UNLESS NOTED OTHERWISE. THIRD ANGLE PROJECTION	DRAWN BY:	TAK
	CHECKED BY:	WRB
	PROTOTYPE BY:	TAK
	PROTOTYPE DATE:	4/10/2012
	APPROVED FOR PRODUCTION BY:	WRB
	PRODUCTION DATE:	8/1/2012

<b>SALCO PRODUCTS, INC.</b>		
PART NAME: <b>AIR VALVE ASSEMBLY 1 1/2"</b>		
MATERIAL: <b>SEE BOM/ NOTE</b>		
PROJECT #:	SHEET #:	SCALE:
<b>031212AO</b>	<b>1 OF 1</b>	<b>1:1</b>
DRAWING #:	PART #:	
<b>C33005</b>	<b>HSVAPE33005</b>	